

DECEMBER 2014

GUIDE — AND — DIGEST



A PUBLICATION OF HMC-TV AT HERSHEY'S MILL

Healthy Feet for an Active Life

Conservative, non-surgical options for most foot conditions



DR. RONALD H. MELINCOFF

Primary Podiatric Medicine

Fellow American Professional Wound Care Association
Specializing in the Care of Diabetic and Medically-At-Risk Feet

Day and evening appointments

610-692-0578

Goshen Executive Center, Suite 200-B
1450 East Boot Road
(Boot Road and Paoli Pike – Opposite CVS)



ANGEL COMPANIONS®



Affordable and compassionate care by a locally owned and managed company - we are licensed and our employees are bonded & insured.

Please call for a free assessment:

610-644-8780

Home Care for Seniors

- Personal care
- Hospice assistance
- Meal preparation
- Medication reminders
- Laundry
- Light housekeeping
- Companionship
- Transportation

**Ask about our
Live-in Program**

www.angelcompanions.net

Your On-Site Real Estate Team at Hershey's Mill

Our experienced team has sold more homes in Hershey's Mill than any other, and has been doing so since 1978. No other agency captures buyer interest like our *on-site* office provides.

In a complex market, it takes more than a basic listing to achieve your goals. So when you need market information, are planning to sell, or looking to purchase, we invite you to stop in at the only full service real estate office at Hershey's Mill. Selling homes here is our *only* business.

We are located at the Main Gate, and open 7 days a week, so you can meet with an agent when it is convenient for you.

610-436-8922

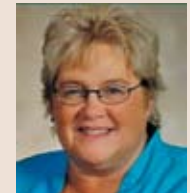
www.hersheysmillrealty.com



Lillian Willis



Monica Connolly



Carol Flynn

1500 Greenhill Road, West Chester, Pennsylvania 19380

Office hours are Monday-Saturday from 10-5 p.m.,
Sunday from Noon-5 p.m., and by appointment.

We recommend an appointment for viewing properties.

Hershey's Mill Community-TV
A fully self-supported nonprofit organization.

20 Hershey's Drive, West Chester, PA 19380
Tel 610-436-5922 • Fax 610-436-6429
Guide and Digest Email: hmctvguide@comcast.net
Business Email: hmctv@comcast.net



HMC-TV Board of Directors

Donald J. Trauger, *President* Carl Fletcher, *Vice President* Louise O'Brien Lee McCarthy
Margie Joyce, *Treasurer* Helen Heller, *Secretary* Jack Keeley

All submissions are welcomed (including articles no longer than 500 words). HMC-TV reserves the right to determine suitability. Send to hmctvguide@comcast.net, Attention Editor. Hardcopy articles are no longer accepted. Submissions must be received five weeks in advance of the issue (no later than the 22nd of the previous month) for possible inclusion in the HMC-TV *Guide and Digest*. Any article received after that date will be reviewed for publication the following month. All articles are subject to editing for space, clarity, and grammar. Contents are from various sources; the information and opinions presented are those of the author, and may not reflect those of Hershey's Mill Community-TV, its officers, or directors.

HMC-TV Guide and Digest
Volume XV Number 12 - December 2014

Editor Louise O'Brien

Featured Writers

Gay Barry, Joe Kennedy, Louise O'Brien,
Sally Shabaker, Don Trauger

Advertising/Marketing Director Jack Keeley
Marketing Finance Director Gerry O'Brien

Volunteer Coordinator Lee Gamma

	From The Main Gate	7
	Holiday Concert	9
	Getting To Know You	10
	Master Association	14
	HM Bus Trips	16
	HM Series Trips	19
	Gift of Time	21
	Resident Directory Changes	23
	Dining Out	24
	HM Library News	26
	Activities Calendar	30
	Community News	34
	HMC-TV Ch20 Programming	38
	Classifieds	40
	HM Golf Club	42
	Club News	46
	Technology Tips	48
	Local History	50
	Recipes	54
	Activities Contacts	57
	Advertisers' Index	58

Cover: Beautifully decorated light posts at the Community Center are one of the ways Hershey's Mill celebrates the holidays.

Ruggeri Cadillac Moving Sale Event

During our Moving Sale Event Mark Ruggeri is selling 2014 and 2015 Cadillacs at GM Supplier Prices.

(2015 ATS Coupe & Escalade excluded)



Moving 1 mile south to 1550 Wilmington Pike. New location, same great commitment!



610-455-1700

RuggeriCadillac.com

1265 Wilmington Pike (Rt. 202)
West Chester, PA 19382



Superior Cadillac Sales & Service in Chester County Since 1933

FOOT AND ANKLE CARE IN CHESTER COUNTY IS NOW JUST A STEP AWAY



Orthopaedic Surgeon
Greg Kirwan, D.O.
Foot and Ankle Specialist

- Specializing in operative and nonoperative treatment in all areas of foot and ankle disorders
- Focuses on being YOUR partner in foot and ankle care
- Practices at our West Chester and Kennett Square offices of Chester County Orthopaedic Associates



THE ORTHOPAEDIC CENTER
Chester County Orthopaedic Associates

We specialize in:

- MINIMALLY INVASIVE SURGERY
- TOTAL JOINT REPLACEMENTS
- SHOULDER RECONSTRUCTION
- SPORTS MEDICINE
- FRACTURE CARE
- SPINE CARE
- HAND SURGERY AND REHAB
- PHYSICAL THERAPY
- MRI
- SPINAL SURGERY
- FOOT AND ANKLE CARE

Our Team:

- | | |
|-----------------------|----------------------|
| John Benner, MD | Chet Simmons Jr., MD |
| Jeff Citara, DO | Mark Tantorski, DO |
| Robert Huxster, MD | Adrienne Towsen, MD |
| Todd A. Michener, MD | Richard Ziegler, MD |
| Matthew Schaeffer, MD | Greg Kirwan, DO |

West Chester

915 Old Fern Hill Road
Building A, Suite 1
West Chester, PA 19380
T: (610) 692-6280

Mon - Fri, 8:00-4:30

Kennett Square

400 McFarlan Road
Suite 100
Kennett Square, PA 19348
T: (610) 444-1344

Mon - Fri, 8:30-4:00



visit us at ccortho.com or premierortho.com

FROM THE MAIN GATE

Marc Fraser | Director of Security

Each year, the Security Department receives checks from residents who wish to donate to the Hershey's Mill Security Department Christmas Fund. The money from the fund is spread amongst the officers as a "thank you" for all they have done to service Hershey's Mill over the past year. In order to contribute to the Christmas Fund, simply make your

check payable to "Hershey's Mill HOA" and drop it off at the Main Gate, or mail the check to:

Hershey's Mill Security
1389 East Boot Road
West Chester, PA 19380

The entire Hershey's Mill Security staff would like to wish you all a very happy and safe holiday season, and we look forward to serving you in 2015!

Hershey's Mill Security has installed new guest call boxes at the North and Main Gate guest entrance lanes. In order to use the call boxes to gain entry into Hershey's Mill, visitors must now:

1. Press the "phone" button, and
2. Enter the host resident's 4-digit house/address number.

Note: If your house/address number contains fewer than

visitor at the gate. Once communication between resident and guest has been established, the resident can press "9" on their phone (as previously) to open the gate for their visitor.



The new call boxes also contain a resident directory that is sorted alphabetically by last name. Therefore, if your

New Guest Entry Lane Call Boxes & Procedures

four digits, then the guest should add the appropriate number of "0"s to the *beginning* of your address in order to make it a 4-digit number. For example, a guest visiting house number 91 would pull up to the call box, press the "phone" button, and enter "0091" to ring that house.

As with the previous system, the call box will ring the resident's phone and allow the resident to speak with the

guest does not remember your 4-digit house/address number, they can use the directory to search for and reach the resident. *Please note that your telephone number will never be displayed to the visitor.*

If you have questions regarding the operation of the new guest call boxes, please contact the Security Department at

SURREY

Services for Seniors

The Leader in Senior Care

Home Health Care

In-Home Services

Health & Wellness Programs

Housekeeping

Transportation

A non profit organization serving the community for 33 years.



610-647-9840 • www.surreyservices.org

We Do The Work, So You Don't Have To.

Downsizing to move can be overwhelming.

Call Survival Essentials.

610-804-8646

www.SurvivalEssentials.com

Jean Back/Chandler Drive/Hershey's Mill

survival essentials
OUR TIME, YOUR FREEDOM

BREWER
HVAC Since 1938

HEATING & AIR CONDITIONING

We Have Certified 24/7 Technicians
On Call for Your Home Emergencies

Sales • Service • Installation • GeoThermal

Serving West Chester for 4 generations as your neighborhood contractor.

HM Residents - Mention this ad and receive 10% off new service contracts! Ask about rebates, credits & financing.

610-692-5252

www.brewersheatandair.com

Plumbing Services Available Now

HOLIDAY CONCERT



Sing Joy!!

The Hershey's Mill Singers' annual Holiday Concert will be held

Saturday, December 6, 7:30pm, and Sunday, December 7, 3pm

NEW LOCATION !!!

The concerts will be held this year at **Saints Peter and Paul Roman Catholic Church, 1325 E. on Boot Road, next to Wellington.**

If you exit the Mill at the exit next to the Giant food store, turn right. Just after Wellington, turn right into the church parking lot.

Why are we moving? The church has a huge sanctuary, so no one needs to worry that we won't have enough seats. The parking lot can also easily accommodate all cars.

Don't miss this free program of holiday selections which include traditional Christmas songs; our resident men's quintet, "The Millers"; and our women's quintet "The Hershey's Misses". As usual, you will also be able to join us in singing favorite carols. The concert is free but we will have donation baskets to help us with our costs.

This event is directed by our own Allegra Sanner, with long-time Mill resident Dee Kinney making magic at the piano. Contact the Singers' president, Bonalyn Mosteller, if you have questions:

Get into the holiday spirit with joyful singing by your friends and neighbors!

Sally Shabaker | Kennett

Did you know there are nearly 76 million Baby Boomers in the United States today, representing nearly 30% of our entire population? One of them turns 50 every seven seconds. They are the largest living generation ever and have always had a significant economic impact. Boomers are the first generation to have grown up with television, and thus far are the wealthiest, most active and most physically fit of any previous generation. Nearly one-third have a college degree, and two-thirds of those who once supported free love are now married. Eighty percent are homeowners. Together they experienced, in one way or another, the civil rights movement, the women's rights movement and the Vietnam War. Their generational theme song could have been Bob Dylan's "The Times They Are A Changing." And so get ready ...

Here Come The Baby Boomers!

The phrase *baby boom* refers to a noticeable increase in the birth rate following World War II, and those born during that post-war population increase are frequently referred to as *baby boomers*. To be precise, the United States Census Bureau defines a baby boomer as someone born during the birth boom between 1946 and 1964. However, Kennett resident Dennis Egan, a boomer himself, prefers a broader definition. "We like to think of being a boomer as a state of mind not limited by age," he says. Dennis, together with his friend and neighbor Christy Herschel, started Hershey's Mill's newest social group,

the Boomers Club. "The whole intent is to give like-minded residents an opportunity to get together, socialize and have fun," Dennis adds.

"The idea took hold during Happy Hour at the Hershey's Mill Golf Club," Christy explains. "Some of us sitting at the same table spontaneously started singing Beatles songs. As more and more people joined in singing songs we grew up with, our table expanded to about 20. As, we began talking, the

Meet Christy Herschel and Dennis Egan

idea for a Boomers Club grew out of this group." Other Boomers Club organizers include Jim Eley of Heatherton, Amy Gunn of Jefferson, and Christy's husband Rick Herschel.

The Boomers Club first met formally on November 9, 2013. "We had an interest survey to hand out to people who attended," says Christy. "I made about 25 copies, but people kept coming and I quickly ran out. What a surprise when 60 people came to that meeting, and membership has continued to grow. We now have 140 members." The survey completed by attendees revealed a variety of interests: biking, wine tasting, book club, travel, concerts and potluck dinners to name a few.

According to Dennis, people at that meeting were encouraged to come up with ideas for what they would like to do, and then take the lead organizing it. As a result, Mary Kay Hagerty of Heatherton started a Boomers Book Club that meets at 6:30pm on the third Tuesday of the month. Since most baby

boomers living in Hershey's Mill are still working, they are unable to participate in daytime activities. "Boomer events are deliberately scheduled for week nights or weekends, so that our members can attend," says Christy, who attends the book discussions at Sullivan House.

"Basically, we want to enable a group of people to have fun," says Dennis, definitely a fun-loving guy himself. And what a lot of laughs they've had

coming up as well." Future lectures are in the planning stages.

Perhaps the most unusual event of 2014 was the Boomers Ramble in late October organized by Al and Ellen Capotosto of Eaton. Participants drove around Chester County following a mapped route, making notations at pre-set stops along the way. Some made it a relaxing drive to see something new and enjoy the varied beauty of Chester County. Others did a competitively timed drive. Some got lost; others didn't. In the end, all met at Nino's in the Dilworthtown Shopping Center for a sociable dinner.



Kennett residents (L to R) Rick Herschel, Christy Herschel, Edie Egan and Dennis Egan making plans for an upcoming Baby Boomers Club meeting. Rick is president of Kennett Village.

this past year! Boomer Club events have included three boomer-themed trivia nights at the Community Center, a Woodstock-themed costume party which over 90 people attended, and a 50th Birthday Party for the youngest boomers (who turned 50 in 2014). "It gave us a reason to party at the Golf Club," says Dennis. "We danced, sang karaoke and mingled for only \$25."

"We've also started a lecture series," adds Christy. "Our first featured Dennis O'Leary (of Eaton), an amateur astronomer with a lifelong interest in astronomy and space exploration who gave a very interesting talk about the solar system. We have other lectures

Coming up in 2015: Murder Mystery Night at Sullivan House and a St. Patrick's Day party at the Community Center. As you can see, Hershey's Mill's new Baby Boomer residents have refreshingly new and different ways to party and celebrate. However, there is no Generation Gap at Hershey's Mill, so Boomer events are not limited to those born between 1946 and 1964.

"If you are in a state of mind to have fun and want to put up with us, you're invited," Christy says. You should know, however, that the group communicates only via email and their web page, which is linked to the Hershey's Mill Homeowners website at www.hersheysmill.org. Their contact email

Continued on page 13



Get a Taste of Healthy Living at Riddle Village.

When you talk with senior adults about the quality of life at a retirement community, dining is always near the top of the list. Why? Well-prepared, healthy and tastefully presented menu options are part of the joy of living – and part of every day life at Riddle Village.

With a variety of on-site venues, including the newly renovated Garden Terrace, wholesome and delicious menu choices make dining at Riddle Village a healthy, relaxing, and highly enjoyable experience.

See for yourself. **For more information, and a personal tour, please call today: (610) 891-3700**



1048 West Baltimore Pike • Media, PA 19063 • (610) 891-3700 • www.riddlevillage.org

LeadingAge PA



MAG/HMGD/11-14

GETTING TO KNOW YOU (continued)

is . You can check them out on Facebook, too.

Updose with Christy and Dennis

How long have you lived at Hershey's Mill?

Christy (C) Two years. I first came here for a luncheon with friends, and I thought it was nice. Later, my husband Rick and I came for an open house, and that's where we first met Dennis and his wife, Edie. **Dennis (D)** We've lived here three years. My parents, Edward and Anna Mae Egan, had lived in Jefferson. Dad said moving to Hershey's Mill was the best thing he ever did. I watched how my parents enjoyed it, and decided to move to what I call "The Bubble," a place where the outside world ceases to exist.

Where did you live before moving here?

(C) We lived in Havertown for 12 years. **(D)** We lived right across the street in Hershey Mill Estates.

In what activities are you involved at Hershey's Mill?

(C) I play at golf and pickleball. **(D)** We also play golf and pickleball, and Edie plays tennis, and on Sundays, we all enjoy the Hershey's Mill pool.

I understand you are still working. What is your present position?

(C) I'm a speech language pathologist currently contracted with a local school district. I went back to school at age 48 to earn my Master's degree from Temple. Competing with 22-year-olds was challenging, but I learned you can do anything you want to do, if you want it badly enough. **(D)** I'm a vice president with Peirce Phelps, a wholesale distributor of HVAC parts, supplies and equipment in the tri-state area; I began working there as a summer

intern. For 20 years I also taught economics at Widener University at night.

Who was your biggest influence or inspiration?

(C) My mother, who at the age of 50 went back to school. **(D)** My Mom and Dad. Mom imparted a high degree of morality and integrity, while Dad taught me the value of working hard to raise a family.

What are you proudest of?

(C) Learning to scuba dive. I overcame my fear and willed myself to do it. **(D)** In 1987 I was elected by students to receive Widener's Teaching Excellence Award.

What advice might you give to others about growing older?

(C) Stay active physically and mentally, and as my mother recently advised me, "Forget the past, look forward to the future. Enjoy today." **(D)** Regardless of your age have a positive attitude about life. Rounding 2nd can be a lot of fun!

What is your favorite song?

(C) Anything by the Beatles. **(D)** "God Only Knows" by The Beach Boys.

Favorite book?

(C) *The Rubaiyat of Omar Khayyam*, a book of poetry. **(D)** *Big Russ and Me* by Tim Russett.

Favorite movie?

(C) *Gone With the Wind*, with Scarlett O'Hara's intense will to survive. **(D)** *The Music Man*.

Favorite food?

(C) Don't hate me: peanut butter and jelly. **(D)** Italian.

Favorite restaurant?

(C) Duling Kurtz House. **(D)** Dilworthtown Inn.

Joe Bove | Quaker

In 2012 the Master Association recognized that the market for 55+ Active Adult living was very competitive. Individuals have many choices as they search for that next destination where they can simplify their lives. So, as they

The marketing program that Hershey's Mill is following has three main elements: the Internet, Print Media and Open Community Days. In addition, we have designed an automobile magnet for residents to put on their cars to highlight Hershey's Mill as a community destination.

Marketing Of Hershey's Mill Is Working

do research for that next destination, we need to make sure that they know about Hershey's Mill. Most of those approaching that decision start their research well in advance of the actual time they plan on moving. They do research via the Internet, through print media, and by talking to friends who have already made the move to a 55+ lifestyle.

Therefore, the challenge is to have a program that assures that Hershey's Mill is a location high on the list of places to consider when people are ready to make a move to the next phase of their lives.



For the Internet, we have a user friendly site, hersheysmill55plus.com, that is designed and monitored to position Hershey's Mill on page one when searches for 55+ living are initiated.

For Print Media, we are using three publications. Each has a different focus and a different audience. The primary publication is the *Philadelphia Inquirer* 55+ Living section supplemented by two magazines, *County Lines* and *Chester County Living*.

Open Community Days have been run in May and October for the past two years. This is an open invitation for individuals who are interested in downsizing, moving toward maintenance free living that offers security, many amenities, and a fully landscaped community.

How do we measure success?

Internet visits started at 537 per month in January 2013 and just reached 1,936 visits in September 2014. Ninety percent of those visits were from searches and referrals. In addition, these visits came from page one positioning of key-words such as 55 and over, or 55+ in Chester County PA.

Open Community Day visitors have exceeded expectations. Since Hershey's Mill is a gated community, it is not easy to simply come in and view Hershey's Mill and understand the extent of what we offer. The initial Open Community Day in May 2013 drew 186 visitors.

The following three drew over 60 in each. When people visit they show that they are interested in Association living and they are seriously interested in Hershey's Mill. The resident volunteers who staff the Welcome Center engage visitors in a discussion of our numerous home styles, what we have to offer in terms of amenities, and what we all receive for our monthly fees. We have found that expressing our fees on a monthly basis is very important in convincing prospects that Hershey's Mill is an affordable community, competitive in cost to what they are spending now for similar services. They learn about the Open Community Day primarily from the 55+ Living section of the *Philadelphia Inquirer* and the internet.

Home Sales is another measure. In 2011, 70 homes were sold; in 2012, homes sold totaled 110; in 2013, the number was 132; and so far this year, 80 homes have been sold. Also, Days on Market (measured from date of listing to having a signed contract) have been trending down from 108 days in 2011 to 30 days this year. So, as you can see from the above, the marketing of our community to potential residents has been a resounding success – a success from which we all benefit.



Like getting a little help from your friends.®
Call us today! (610) 590-4888

- Companionship
- Dementia/Alzheimer's Care
- Light Housekeeping
- Respite Care
- Meal Preparation
- Personal Grooming and Dressing
- Overnight Stays (24-hour Care)
- Transportation

Our loving, caring, compassionate seniors are there to help. We offer all the services you need to stay in your own home, living independently.
www.heart4helpingseniors.com

©2013 Seniors Helping Seniors. Each office is independently owned and operated. All trademarks are registered trademarks of Corporate Mutual Resources Inc. Not all services are available in all areas.

VOTED #1 FLOORING STORE BY MAIN LINE & DAILY LOCAL READERS



705 E. Gay Street • West Chester
www.BoylesFlooring.com • 610-429-9773

TRIPS ARE LISTED IN
CHRONOLOGICAL ORDER

American Music Theatre – Christmas Show

Tuesday, December 2, 2014

Cost: \$65

Departs: 12:00pm

Contact: B.J. VanSchooneveld

This critically acclaimed Christmas show is back with an all-new presentation of your favorite holiday songs, hymns, and carols. It will feature spectacular vocal harmonies, amazing musical arrangements, and magnificent dancing. Come celebrate the wonders of the holiday season at AMT with a show guaranteed to leave you in the Christmas spirit. A smorgasbord lunch at Bird-In-Hand Restaurant is included prior to the show.

Pennsylvania Farm Show

Friday, January 16, 2015

Cost: \$15 + Lunch

Departs: 10:30am

Contact: Priscilla Burt

Celebrate agriculture at the 99th PA Farm Show. The Farm Show Complex in Harrisburg will host the largest indoor agricultural exposition in the nation. Exhibits and judging events for the day include cattle and goat dairy, wool, farm equipment, dancing, and culinary.

The HM Bus Committee is always looking for more volunteers to share ideas and plan trips! If interested, call Marc Fraser at

All bus riders must be age 18 or older!

Trip payment checks should be made payable to "Hershey's Mill HOA".

Bus leaves promptly at the scheduled time. Please plan to arrive 10 minutes early.

Lunch is on your own at the food court, which features many PA products.

West Chester University – Traditional Irish Music & Dance

Friday, February 27, 2015

Cost: \$21

Departs: 6:45pm

Contact: Connie Cline

Brian Conway, premier Irish-American fiddler, performs with skill, grace, and force that are steeped in tradition but distinctly his own. Well known in the Irish/Celtic community, he has won numerous all-Ireland fiddling competitions and has been called one of the best fiddlers of his generation.

West Chester University – President's Speaker Series: Jane Pauley

Friday, March 6, 2015

Cost: \$29

Departs: 7:15pm

Contact: Ruth Sugar (after 2/1/15)

Jane Pauley – *Your Life Calling*. A respected broadcast journalist for over 30 years, Jane Pauley's career has spanned morning, primetime, and daytime television, making her one of the most recognizable personalities in America. Call now to reserve your seat, as this trip will fill up quickly!

West Chester University – Popovich Comedy Pet Theater

Friday, March 27, 2015

Cost: \$21

Departs: 6:45pm

Contact: Connie Cline

A world famous blend of the unique comedy and juggling skills of Gregory Popovich and the extraordinary talents of his performing pets. Each of the show's 15 cats and 10 dogs were once strays and rescued from animal shelters. Enjoy an extravaganza of European-style clowns,

Save all the Dates!

December 2

January 16

February 27

March 6, 27, 31

amazing juggling and balancing acts, and very talented performing pets. We have excellent seats set aside for us.

West Chester University – Taiko Drumming & Japanese Folkloric Dance

Tuesday, March 31, 2015

Cost: \$17

Departs: 6:45pm

Contact: Dolores Labowskie

Nearly 30 drummers and dancers from Tamagawa University in Japan return to WCU for an athletic and graceful performance. This amazing stage show has received rave reviews from the *New York Times* and other media outlets. Join us for an exciting and unique experience!





Podiatry Care Specialists, PC

Dr. Theodore G. Mushlin
Dr. Bradford J. Jacobs
Dr. Chad J. Friedman
Dr. Alexandra K. Grulke
Dr. Aabha M. Suchak

- Offering Professional Medical and Surgical Treatment of the Foot and Ankle.
- Ask about our Diabetic Shoe Program.
- Laser Treatment for Fungus Nails Available.

PodiatryCareSpecialists.com



Take a Step in the Right Direction

WEST CHESTER (2 LOCATIONS)

- 1593 McDaniel Drive
- 795 E. Marshall St., Suite G2 West Chester, PA 19380 610-431-0200

AUDUBON

Seton Center
950 Forge Avenue, Suite 200
(Trooper Rd. & Forge Ave.)
Audubon, PA 19403
610-431-0200

NEWTOWN SQUARE

3319 West Chester Pike
at Surrey Drive
Newtown Square, PA 19073
610-356-5911

EXTON

Main Line Health Center
at Exton Square
153 Exton Square Parkway
Exton, PA 19341
610-431-0200

SarahCare
DAYTIME SENIOR CARE & ACTIVITIES
610-251-0801

LOOKING FOR affordable day care FOR A LOVED ONE?

For the cost of 3 hours of home care, you can receive 6 hours of nursing services, delicious meals and engaging social activities at our SarahCare Day Center in Malvern.

AND BE HOME FOR DINNER!

CALL TODAY FOR A FREE TRIAL DAY Since 1985.

RICHARD. J. EGAN PAINTING CO.

The Superior Craftsmen ... We are Painting Specialists
Look at Princeton, Glenwood, Oakmont, Ashton, Robynwood, & Ulster Villages, & Sullivan House
Ask Their Maintenance and Architectural Committees About Us

INTERIOR & EXTERIOR PAINTING • WALLPAPER HANGING
DETAIL SPECIALISTS • REPLACEMENT WINDOWS • CUSTOM CARPENTRY
POWER WASHING • WATERPROOFING DECKS • FULLY INSURED

Brushing and Rolling are Best! ...Spraying upon Request

FREE ESTIMATES Call: 610-353-3570

HERSHEY'S MILL SERIES TRIPS

2014-2015 Philadelphia Orchestra

Friday Evening Series

Cost: \$14 (Bus Only) + Admission
Departs: 6:00pm
Contact: Ann Seraphin

The enthusiasm for the Philadelphia Orchestra continues, and there are only a few seats available on the bus for the remaining select 2014-2015 season dates:

- December 12, 2014
- February 20, 2015
- March 20, 2015
- May 1, 2015

Call now to reserve your place.

2014-2015 West Chester University Travel Adventures Series

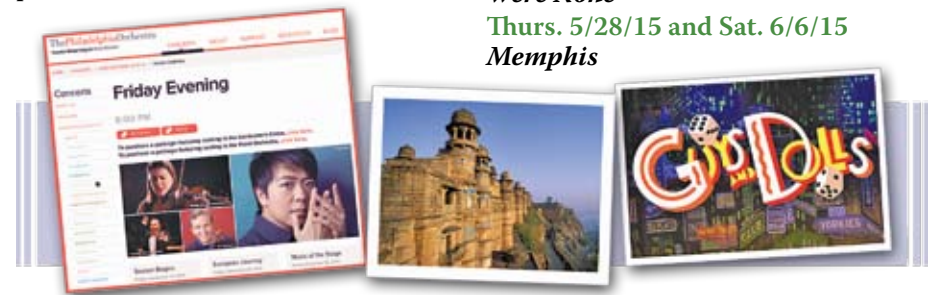
Tuesday Evening Series

Cost: \$8 (Individual Bus Fee) + Admission
Departs: 6:30pm
Contact: Ruth Sugar (after 2/1/15)

This series is a wonderful and inexpensive way to see the world! The WCU Geography Department presents its 2014-2015 season program as follows:

- February 24, 2015 – **France Forever**
- March 17, 2015 – **The Soul of India**
- March 30, 2015 – **Lure and Lore of Deserts**

Participants need to order program tickets on their own. These may also be purchased at the door.



2014-2015 DuPont Theatre

Wednesday Matinee Series

Cost: \$14 (Individual Bus Fee) + Admission
Departs: 12:30pm
Contact: Ruth Sugar (after 2/1/15)

The remaining performances we will be attending this year are:

- April 15, 2015 – Camelot** is the story of King Arthur's kingdom – its passion, pageantry, and betrayal.
- May 13, 2015 – Guys and Dolls** is set in Damon Runyon's mythical New York City. This oddball romantic comedy soars with the spirit of Broadway! Participants need to order program tickets on their own.

2014-2015 Walnut Street Theatre Series

Thursday & Saturday Matinees

Cost: \$40 per show
Departs: 12:30pm
Contact: Ruth Sugar (Thurs. shows) (after 2/1/15)
Contact: Connie Cline (Sat. shows)



We are collecting names for the Wait List, as series subscribers often miss performances due to scheduling conflicts. Dates and shows are as follows:

- Thurs. 1/29/15 and Sat. 2/7/15 Noël Coward's *Private Lives*
- Thurs. 3/26/15 and Sat. 4/4/15 Agatha Christie's *And Then There Were None*
- Thurs. 5/28/15 and Sat. 6/6/15 *Memphis*



Franklin Auto Spa

Premium service to help protect the life and look of your car.

Wednesdays are **LADIES DAY!**

25% off ANY CAR WASH

Tuesdays SENIOR DAY!
50% off Any Wash

535 Lancaster Ave.

Frazer, PA 19355

Phone: (610) 296-9000

Washes:

-  **Lightning Strike - \$24 (incl. tax)**
Take Flight Wash + - Durashield® U.V. Protectant
- 72 Hour Guarantee - Lava Wax Polish
-  **Take Flight - \$20 (incl. tax)**
Turn Key Wash + - Tire Shine
- Triple Spot Free Rinse - Colorcoat® Triple Foam
- Durashield® U.V. Protectant
-  **Turn Key - \$17 (incl. tax)**
Ben's Basic Wash + - Guard Dog® Undercarriage
- 2 Step Wheel Cleaning
-  **Ben's Basic - \$14 (incl. tax)**
Exterior Wash + - Interior Vacuuming
- Dash Wiped Clean - Windows Cleaned
- 1 Step Wheel Cleaning
-  **Exterior Wash - \$9 (incl. Tax)**
- Exterior Wash - Towel Dry 

www.franklinautospa.com

GIFT OF TIME

Theresa Marran | Inverness

About one million Americans live with Parkinson's disease (PD), with another 60,000 newly diagnosed each year. There are many clinical research studies in progress to look at ways to prevent, control and treat Parkinson's, and ultimately to find a cure. But to have a successful clinical trial you need volunteers – not just patients with PD, but also healthy people without PD to participate in trials that require a control group. Here is where you can help.

Finding suitable subjects for a trial is itself very time-consuming. A five-year study to identify "bio-markers" for Parkinson's began in 2010, in 24 sites in the US, Canada, and abroad. Even with research coordinators at all those sites reaching out to enroll subjects, it took two years to enroll 400 Parkinson's patients and 200 healthy controls, and this was an "observational" study, which did not involve testing of a medication.

To cut that time for future studies, The Michael J Fox Foundation for Parkinson's Research has developed an online program, FoxTrialFinder, aiming to connect willing participants with researchers. Potential participants can register at FoxTrialFinder.michaeljfox.org, and include general information, including how far they're willing to travel. The FoxTrialFinder database will match registrants to studies that fit their particular requirements. An email lets you know of an opening, and invites (but does not require) you to take the next step. The time com-

mitment varies by study, and there is usually a small stipend to cover travel expenses.

Besides FoxTrialFinder, the National Institute of Health offers detailed information about the trials underway for many conditions, the trial process, the potential risks, and questions to ask before signing up. ClinicalTrials.gov currently lists over one hundred thousand studies with locations in all 50 states and in 187 countries, including over eight thousand in Philadelphia.

FoxTrialFinder.michaeljfox.org
ClinicalTrials.gov

Between these two sites, it's easy to find an opportunity to contribute time to advance medical research. Just taking the first step gets you invested in the process. It may never have occurred to you that you can play a role in research even if you don't have a particular disease. It's surprisingly hard to find "healthy controls" who will commit to occasional visits (perhaps quarterly or monthly – the frequency depends on the study) to a study site. Living within an hour of Penn and Jefferson, both active in research, Hershey's Mill residents are well positioned to participate in moving critical research forward, whether for Parkinson's Disease or one of the many other diseases for which a cure is still unknown.

Please give some thought to this critical need, and if you're so inclined, enroll at FoxTrialFinder.michaeljfox.org for Parkinson's studies, or explore ClinicalTrials.gov for trials related to other conditions. Your contribution of a little time can make a huge difference.

Paoli Rug Co.
Since 1956



Rug Cleaning & Repair on Premises

610-644-7250

- Free Pickup & Delivery
- Best Selection of Wall to Wall and Oriental Rugs

www.paolirug.com





610-692-7776
 300 West Boot Road
 West Chester, PA 19380

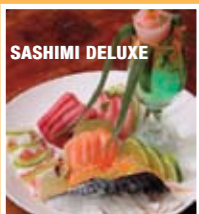
Insurance Claims
 Autobody Repair
 Collision Services
 Paintless Dent Removal
www.3DBodyworks.com



FREE GAS FILL UP with any repair over \$1,000.
 Exclusively for Hershey Mill residents. Please present this ad to redeem. Offer expires 12/31/14.

ORIENTAL PEARL RESTAURANT

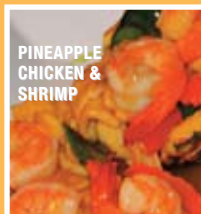
*Sushi and Pan Asian Cuisine & **BYOB!***



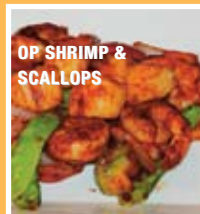
SASHIMI DELUXE



MANGO CHICKEN & SHRIMP



PINEAPPLE CHICKEN & SHRIMP



OP SHRIMP & SCALLOPS

10% Off for H. Mill Residents

Goshen Village Shopping Center
1550 Paoli Pike • West Chester (Across from CVS)
610-692-5888 📞 **OrientalPearlwc.com**

RESIDENT DIRECTORY CHANGES

Foley, Marilyn

McGeorge, John & Spoons, Joan

Shea, Kathy

Mander, Linda

Robinson, Don & Maryann

Threlkeld, Kathy

White, Barbara



Photos by Gerry O'Brien

Volunteers from Hershey's Mill Community-TV get together to enjoy good food and good company. We encourage residents to get involved with any of our HM Community projects – original TV programming, publications, summer concerts, and more. Your enthusiasm and skill are always welcome at Channel 20.

Joining in the fun were Magie Alleva, Eve Bailey, Jim & Joan Gallagher, Margie Joyce, Jack & Julie Keeley, Andy & Linda Lang, Bobbie & Lee McCarthy, Gerry & Louise O'Brien, and Don & Peg Trauger.



Transform Your Kitchen Without Replacing Your Cabinets

Easier Access • Better Organization • More Storage

FREE IN-HOME DESIGN CONSULTATION

Karen J. McKinney, Designer
 610.331.0006 | kmckinn001@aol.com | shelfgenie.com



Special Offer for Residents of Hershey's Mill!

50% OFF LABOR

with purchase of 5 or more Glide-Out shelves.

Limit one offer per household. *Valid on Glide-Out purchase with offer. Cannot be combined with other offers.

Gay Barry | Quaker

Tea is back! It has become a favored drink in many iterations. All tea comes from the same source: the Camilla Sinensis tea bush. Whether a tea leaf winds up as a cup of green, black or white tea depends entirely on how it is

Today, iced tea is a favorite drink, especially in the summer. We can have it sweetened or not, flavored or not, caffeine or caffeine-free, or my favorite which is Chai with ice cubes and milk.

Tea of all sorts and flavors can be found at the newly-opened The Lincoln Room in West Chester. Here, hot tea is

The Lincoln Room

28 West Market Street
West Chester
(610) 696-2102

picked and processed. For centuries it was served only hot. But the ice cube changed everything.

Hot tea is often used to calm the nerves, to settle a stomach, or to help cure a cold. When we were little, I imagine most mothers gave us some tea and toast. Even today, it works for me. For centuries, tea has been used for medicinal purposes. Chamomile – Egypt provides the finest flowers – is often used for its calming effect. Darjeeling, found in the mountains of the Himalayas, is known as the “Queen of Teas”; and is a robust tea welcome after a day in cold temperatures. All herbal teas are caffeine free. Green tea is now recommended by some as a healthful elixir for our bodies.

served the appropriate way – loose and brewed in very hot water. Tea leaves like to be free. The best flavor will arrive if the leaves are allowed to fully open in water.

Though it is December, February is the month full of various occasions to celebrate. One is Lincoln’s Birthday. And it is here that we can enjoy a delightful lunch and at the same time find ourselves surrounded by a little history. The tea room is located in the oldest office building in West Chester. More later.

The Lincoln Room has changed hands but most everything else is the same, thankfully. This is a true tea room with traditional loose tea, ingenious tea sandwich ingredients, excellent quiche, and scrumptious soups. Sandwiches are accompanied by a petite, flavorful bit of artichoke and cheese delight.



The tea list includes many selections of black, green, white and herbal teas.

The menu has a few more items and categories from which to select. Starters are now available including cups of soup, slice of quiche, roasted red pepper salad or a savory scone. Each day, several soups are available as well as salads. Some new items are sweet kale salad with dried cranberries and pumpkin seeds, Rail-Splitter (get it?) cheese and veggie plate, the traditional Waldorf chicken salad, and the Tad Lincoln side salad.

There are pairings of soup and salad, soup and sandwich (four tea sandwiches), cup of soup and quiche, sandwiches and salad, and quiche and salad. My favorites are the tea sandwiches;

Photos courtesy of The Lincoln Room

yummy and unique spreads or turkey or vegetarian sandwiches on wheat bread.

You won’t want to miss the excellent desserts including bread pudding, sweet scone with lemon curd, or a dessert plate filled with an assortment of favorites. There is also a “Little Lincoln Menu” for children.

And how does Mr. Lincoln fit into all of this? This Federal-style structure, built in 1833 by William Everhart, was one of the tallest in West Chester at five stories. One of the early tenants was *The Chester County Times*, a weekly anti-slavery newspaper. In 1860, Lincoln was running for president but was

little known in the East. He was urged to submit a biographical sketch to this newspaper, which ran in the February 11, 1860 issue, and subsequently in other East coast publications. Lincoln mused that this was instrumental in securing his nomination.

The Lincoln Room is located in the lower level at 28 West Market Street. There are 10 steps leading into the restaurant so entering from the back is recommended. Adjacent garage parking is available at 22 South High. Your ticket will be partially validated.

Open from 10am to 2pm Tuesday through Saturday, this is a lovely place for friends to gather for lunch. Reservations are suggested.

So have “a cuppa” and delight in ways and times when life seemed far less hectic – just like *Downton Abby*.

Kevin Free
“the ultimate handyman”
General Home Repair
Painting/Wallpapering (including decorative) • Carpentry • Power Wash/Stain Decks
Minor Electrical • Tile Work • Masonry • and Much More
“No job is too small”
610-613-0928
Free Estimates email: dkevinfree@aol.com Senior Discounts
Conveniently located in Malvern, PA



ASSORTED NEWS

Donna Spoto | Ulster

As the holidays approach and many residents prepare to leave for warmer climates, remember that our library has books for sale throughout the year. You might purchase one from our cart for your trip.

If you are a resident or know any resident that would like some books brought to their home to read, please contact Barbara Baturka at for or Becky Bell at more information.

New books are processed monthly. Please visit the library to learn of our latest acquisitions. Our library board members have some suggestions ready

Community Center Library Hours
Monday to Friday 10am-2pm
Saturday 10am-Noon
www.hmlibrary.com

for you. Books on CDs are also available for your enjoyment.

Kindly hold your used books until January 2015 for our sale next year.

NEW LIBRARY BOOKS

Peggy McReynolds | Yardley Librarian

- Alphabetical by Author*
- Alexander, Tasha – *Counterfeit Heiress*
- Beauman, Sally – *Visitors*
- Boast, Will – *Epilogue*

- Burton, Jessie – *Miniaturist*
- Cain, Chelsea – *One Kick*
- Christie, Alix – *Gutenberg's Apprentice*
- Coulter, Catherine – *Lost Key*
- Crombie, Deborah – *To Dwell in Darkness*
- Eason, Lynette – *No One To Trust*
- Eason, Lynette – *Nowhere To Turn*
- Enger, Lin – *High Divide*
- Flanders, Judith – *Victorian City*
- Franks, Lucinda – *Timeless Love Morgenthau and Me*
- Girard, Anne – *Madame Picasso*
- Gregory, Philippa – *White Princess*
- Gwynne, Samuel – *Rebel Yell*
- Hilderbrand, Elin – *Winter Street*
- Hood, Ann – *Italian Wife*
- Issacson, Walter – *Innovators*

- Jenoff, Pam – *Winter Guest*
- Kline, Christina – *Orphan Train*
- Lawton, John – *Then We Take Berlin*
- Macomber, Debbie – *Mr. Miracle*
- Mandel, Emily St. John – *Station Eleven*
- McCullough, Coleen – *Bittersweet*
- Meyers, Randy Susan – *Accidents of Marriage*

Libraries store the energy that fuels the imagination. They open up windows to the world and inspire us to explore and achieve, and contribute to improving our quality of life. Libraries change lives for the better.

– *Sidney Sheldon*

- Montefiore, Santa – *Secrets of the Lighthouse*
- O'Reilly, Bill – *Killing Patton*
- Patterson, James – *Burn*
- Perry, Anne – *Blood on the Water*
- Picoult, Jodi – *Leaving Time*
- Pittard, Hannah – *Reunion*
- Reichs, Kathy – *Bones Never Lie*
- Robb, J. D. – *Festive in Death*
- Skibsrud, Johanna – *Quartet For the End of Time*
- Smiley, Jane – *Some Luck*
- Stein, Garth – *Sudden Light*
- Taylor, Patrick – *Irish Doctor in Peace and War*
- Toibin, Colm – *Nora Webster*
- Vail, Amanda – *Hotel Florida*
- Wait, Lea – *Shadows on a Maine Coast*
- Weaver, Ashley – *Murder at Brightwell*
- White, Randy Wayne – *Haunted*
- Woods, Stuart – *Paris Match*
- Zahler, S. Craig – *Mean Business on North Street*

Knots & Weaves
DECORATIVE RUGS

FREE PICKUP
and DELIVERY
for VIP Hershey's Mill Residents

"My experience at Knots and Weaves was good to me! A comfortable environment with a very helpful and thoughtful professional team and an aesthetic inventory."
Rosemary S., West Chester, PA - Hershey's Mill



BUY · SELL · TRADE · CLEAN · RESTORE
 Continued Top Notch Service to our loyal Hershey's Mill Clients!




218 East King Street | Malvern, PA | 610-644-9192
www.knotsandweaves.com

Follow us






BUCKLEY, BRION, MCGUIRE & MORRIS LLP
 IS PROUD TO HAVE SERVED
HERSHEY'S MILL SINCE 1983



BUCKLEY BRION
MCGUIRE & MORRIS LLP

~ Wills & Trusts ~
 ~ Estate Administration & Real Estate ~
 ~ Personal Injury, Medical Malpractice ~
 ~ Accident Cases ~
 ~ Miscellaneous Legal Matters ~

FOR INFORMATION CALL ANTHONY MORRIS
 PHONE: (610)436-4400, EXT. 103 OR
 EMAIL: AMORRIS@BUCKLEYLLP.COM
 118 W. MARKET STREET, SUITE 300
 WEST CHESTER, PA 19382-2928

John S. Price
JEWELER INC.

- Custom Jewelry Design
- Re-mounting
- Repairs performed on-premises
- Appraisals

10% off all new purchases to residents of Hershey's Mill

FRAZER SHOPPING CENTER
 BUSINESS RT. 30 • FRAZER, PA 19355
 610-647-6168

 **MacLaren**
 Kitchen and Bath



Countertop Replacements In One Day!

Visit our Showroom For:
 Granite, Corian, and Quartz
 Cabinet Design and Sales
 Tile Backsplashes
 Sinks and Faucets

We're Just Around the Corner
 Monday- Friday 8am- 4:30pm
 Saturday 10am-2pm

610-436-5436
 www.maclarenfab.com
 1135 Phoenixville Pike West Chester, PA

Call Today For A 5% Discount For Hershey's Mill!



Complete Landscaping Packages

- Professional Consultation
- Scale Drawings & Design
- Complete Necessary Forms
- Installation & Warranty

610-692-2649
 hmland@comcast.net



Michael C. Neale, P.C.H.
Connie L. Friedrich, P.C.H.

Now Open

Toninos
 PIZZA & PASTA CO.

10% DISCOUNT ON ENTREES FOR HERSHEY MILL RESIDENTS



Come enjoy our homemade pastas, pizzas, and signature Italian dishes

235 Lancaster Ave • Frazer PA • **610.240.9566** • www.toninospizzaandpasta.com



GENUINE
 Healthcare Resources LLC

Your clear path through the healthcare maze.™

Genuine Assurance Program®
 Giving you peace of mind by bridging the GAPs in your healthcare experience!

For a small fee you can have access to your own Nurse Advocate –
Call 610.429.1200

We're here to help with concerns and questions regarding healthcare related issues!

www.genuine-hcr.com



OLIVER
 Comfort You Can Trust

Oliver Provides Fast, Reliable, Expert Service! If It Breaks, We Fix It.

For Superior Service and Comfort You Can Trust, call Oliver today!

- Heating
- Cooling
- Plumbing
- Electrical

610-616-5691
OliverHeatCool.com

Monday	Tuesday	Wednesday	Thursday	Friday	Saturday	Sunday
1 8:30am Aerobic Dancing/Exercise 10:00am Ageless Exercise 12:00pm (SH) Circle Of Friends 12:30pm Mah Jongg 12:30pm WH Duplicate Bridge 3:00pm Bridge 7:00pm Singers Rehearsal 7:00pm WH Duplicate Bridge	2 1:00pm Pinochle 1:00pm Mah Jongg 1:30pm Mah Jongg 3:00pm (SH) Railroad Club	3 7:30am Men's Bible Study 8:30am Aerobic Dancing/Exercise 9:30am Intermediate Bridge Lesson 10:00am Ageless Exercise 12:00pm Art Group 12:00pm Dominoes 12:30pm Social Club Bridge 12:30pm Billiards 7:30pm Mah Jongg 7:30pm Casual Singing Group	4 10:00am Alzheimer/Dementia Support Group 10:00am Yoga 10:30am Cradle Stitchers 12:30pm Billiards 1:00pm Knitting Circle 1:00pm (SH) Chess Club 2:00pm Card Games 6:30pm Poker 7:00pm HM Democrats Town Hall 7:00pm Stress Management Class	5 8:30am Aerobic Dancing/Exercise 10:00am Quilters 10:00am Ageless Exercise 12:30pm Billiards 1:00pm Pickleball Mah Jongg 5:30pm Kennett Village Party	6	7 SH is Sullivan House. Cld is Cancelled. Dates and times are subject to change. Contact program leader for details.
8 8:30am Aerobic Dancing/Exercise 10:00am Ageless Exercise 12:00pm (SH) Circle Of Friends 12:30pm WH Duplicate Bridge 3:00pm Bridge 5:45pm HM Singers Party 7:00pm WH Duplicate Bridge	9 10:30am Hearing Screening 1:00pm Pinochle 1:00pm Mah Jongg 1:30pm Mah Jongg 3:00pm (SH) Railroad Club 6:30pm Open Bunco 7:00pm Computer Club 7:00pm (SH) Great Books Club	10 7:30am Men's Bible Study 8:30am Aerobic Dancing/Exercise 10:00am Ageless Exercise 12:00pm Art Group 12:30pm Billiards 1:00pm Dominoes 7:30pm Mah Jongg	11 10:00am Yoga 11:30am Mermaid Book Club 12:30pm Billiards 1:00pm Knitting Circle (Cld) 1:00pm (SH) Chess Club 2:00pm Card Games 2:00pm (SH) Books Discussion 6:30pm Poker 7:00pm Stress Management Class	12 8:30am Aerobic Dancing/Exercise 10:00am Quilters 10:00am Ageless Exercise 12:30pm Billiards 1:00pm Pickleball Mah Jongg 2:00pm Rummikub	13 5:00pm Inverness Village Party	14
15 8:30am Aerobic Dancing/Exercise 10:00am Ageless Exercise 12:00pm (SH) Circle Of Friends 12:30pm Mah Jongg 12:30pm WH Duplicate Bridge 3:00pm Bridge 6:00pm Paali Hosp Aux Tree Lighting 7:00pm WH Duplicate Bridge	16 1:00pm Pinochle 1:00pm Mah Jongg 1:30pm Mah Jongg 3:00pm (SH) Railroad Club 7:00pm Investment Club	17 7:30am Men's Bible Study 8:30am Aerobic Dancing/Exercise 9:30am Intermediate Bridge Lesson 10:00am Ageless Exercise 11:00am Social Club Bridge & Lunch 12:00pm Art Group 12:30pm Billiards 1:00pm Dominoes 7:30pm Mah Jongg	18 10:00am Yoga 12:30pm Billiards 1:00pm Knitting Circle 1:00pm (SH) Chess Club 2:00pm Card Games 6:30pm Poker 7:00pm Stress Management Class	19 8:30am Aerobic Dancing/Exercise 10:00am Quilters 10:00am Ageless Exercise 12:30pm Billiards 1:00pm Pickleball Mah Jongg	20	21
22 8:30am Aerobic Dancing/Exercise 10:00am Ageless Exercise (Cld) 12:00pm (SH) Circle Of Friends 12:30pm Mah Jongg 12:30pm WH Duplicate Bridge 3:00pm Bridge 7:00pm WH Duplicate Bridge	23 1:00pm Pinochle 1:00pm Mah Jongg 1:30pm Mah Jongg 7:00pm (SH) Great Books Club	24 7:30am Men's Bible Study 8:30am Aerobic Dancing/Exercise 10:00am Ageless Exercise (Cld) 12:00pm Art Group 12:30pm Billiards 1:00pm Dominoes 7:30pm Mah Jongg	25 Christmas Day (Most Activities Cld) 10:00am Yoga 12:30pm Billiards 1:00pm Knitting Circle 1:00pm (SH) Chess Club 2:00pm Card Games 6:30pm Poker 7:00pm Stress Management Class	26 8:30am Aerobic Dancing/Exercise 10:00am Quilters 10:00am Ageless Exercise (Cld) 12:30pm Billiards 1:00pm Pickleball Mah Jongg 2:00pm Rummikub	27 10:00am Mac Computer Group	28
29 8:30am Aerobic Dancing/Exercise 10:00am Ageless Exercise (Cld) 12:00pm (SH) Circle Of Friends 12:30pm Mah Jongg 12:30pm WH Duplicate Bridge 3:00pm Bridge 7:00pm WH Duplicate Bridge	30 1:00pm Pinochle 1:00pm Mah Jongg 1:30pm Mah Jongg 3:00pm (SH) Railroad Club	31 New Year's Eve 7:30am Men's Bible Study 8:30am Aerobic Dancing/Exercise 10:00am Ageless Exercise (Cld) 12:00pm Art Group 12:30pm Billiards 1:00pm Dominoes 7:30pm Mah Jongg				

December 2014 Activities Calendar

Ask the Expert

Q I am 82 years old and beginning to feel like a burden to my family. I can no longer drive and depend on my daughter to take me to the doctor and run errands. I know this takes her away from her family too often. Any suggestions?

A You are fortunate to have a loving and caring daughter nearby, but she may also be feeling the stress of multiple roles. She may welcome the opportunity to supplement her care with some outside assistance. We can provide that much needed break and restore a healthy balance to your lives.

Got a Question? Call Colleen at

484-879-6573

www.seniorhelpers.com



Colleen Slusarczyk
PRESIDENT

Affordable Rates
\$19-\$21/hr



Caring In-Home Companions

256 Eagleview Blvd. • Suite 263
Exton, PA 19341

Quality care you deserve, close to home.

When it comes to your family's health, you can trust the care of Paoli Hospital. We've grown from a seven-room facility to the County's only trauma center, investing in new facilities and technology and expanding our services and staff to meet your needs.

Our dedication to patient safety and excellence has been recognized by some of the nation's leading health care standards-setting organizations. We're proud to be the only hospital in the County with accreditations in *all* of the following:

- Breast Cancer Care • Chest Pain • COPD • Hip and Knee Replacement
- Sleep Disorders • Stroke • Trauma

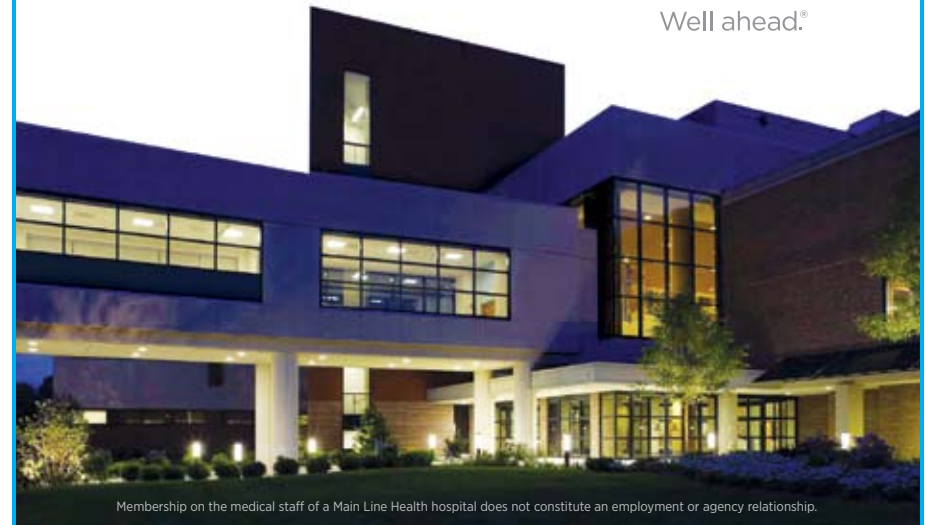
With many of our physicians and services available at the Main Line Health Centers in Collegeville and at the Exton Square Mall, quality care has never been more convenient.

1.866.CALL.MLH
mainlinehealth.org/paoli



Paoli Hospital
Main Line Health®

Well ahead.®



Membership on the medical staff of a Main Line Health hospital does not constitute an employment or agency relationship.



One call handles it all

PLUMBING | HEATING | COOLING
ELECTRICAL | WATER CONDITIONING
AUDIO/VISUAL & AUTOMATION



CONTRACTORS OF THE YEAR

Hallerent.com

888.625.1500

PA1867

TEAM FOX FUNDRAISER FOR PARKINSON'S

Terry Marran | Inverness

The Team Fox committee members are grateful to the Hershey's Mill community for the generous support of the Dessert Buffet and Silent Auction held in the Community Center on September 30. The event raised over \$7,000 for The Michael J. Fox Foundation for Parkinson's Research. A sell-out crowd enjoyed a lively after-

Photos courtesy of Team Fox



noon with over 40 Silent Auction gifts, many smaller raffle prizes, and a tempting array of desserts – and most of us yielded to the temptation! While this contribution isn't enough to cure Parkinson's, it's a step, and we're grateful to our supporters, recognizing that there are many other illnesses to be cured, and many demands on our discretionary spending. A sincere *Thank You* from co-chair Ruth Sugar and energetic team members Annette Coleman of Yardley, Nancy Fasnacht of Devon, Diane Davison of Malvern, Karen Lynch of Exton, Mary Lou Perry of Inverness, Bobbi Rubenstein of Franklin, Ray Tauber of Brighton, and me.

TREE LIGHTING CEREMONY

Janie Gerold | Ashton

The Hershey's Mill Auxiliary of Paoli Hospital invites you to join its members on Monday, **December 15** at 7:30pm for its annual Tree Lighting ceremony in front of the Community Center. As the lights sparkle on the beautiful evergreen tree, the Covenant Presbyterian Church Brass Ensemble will lead us in carol singing. The celebration will



continue inside with more music and refreshments.

SULLIVAN HOUSE HOLIDAY OPEN HOUSE

Gay Barry | Quaker

"Sleigh bells ring, are you listening, in the lane snow is glistening; what a beautiful sight, we're happy tonight, walking in a Winter Wonderland." It's hard to believe it's already that happy time of year. As an aside, most of us would probably rather see lights glistening rather than the fluffy white stuff! But the magic of the holidays will abound in Sullivan House on Sunday, **December 7** from 1pm to 4pm.

Come see three spectacularly decorated holiday trees as well as a festively adorned Sullivan House. Cookies and punch will be served and the Model Railroaders club will have its fantastic working train villages open for the grandchildren as well as for all of us. What a wonderful way to start the holidays.

The Sullivan House Committee looks forward to welcoming you to this traditional event. See you there.

CASUAL SINGING GROUP REVAMPED

Sally Thompson | Franklin

"Everything's coming up roses for you and for me!" With patient waiting, we now have a nice big room on the top floor of the Community Center; we have two or more guitars accompanying us;

and we found a week night when Boomers and friends have time to be there! We will meet on the **first Wednesday** of every month from 7:30pm to 9pm. This group is for those of us that



love to sing but aren't performers, although performers would be welcome to come and help keep us in tune! We will pick a song from *Rise Up Singing* or another song book, and sing our hearts out just for ourselves and each other. Come join us whenever you can – the "more the merrier" as they say! Call if you have questions, suggestions, or want to help us make sure we have enough chairs.

HIGHLIGHTS FROM THE HEALTH FAIR

Melinda M. Williams

In October of this year, the "Stay-In-Your-Home" Health Fair was held at the Hershey's Mill Community Center. This unique event focused on products and services that would aid seniors who desire to remain in their homes and not move to assisted living facilities. Yet a "little help" is often needed, and that is what these service providers were offering.

Continued on page 37



For the Lifestyle You Deserve...

- Resort-style living in a retirement community with a continuum of care available
- Superior accommodations & amenities – Parking garage included
- Wide selection of independent apartments with balcony or patio and personal care suites. Private rooms for skilled nursing & rehab which was awarded a FIVE-STAR RATING!
- Owner managed, locally owned
- No Entrance Fee or Community Fee

For more information call 484-653-1200
www.wellingtonretirement.com



1361 Boot Road (Boot Road & Carriage Drive) • East Goshen • West Chester, PA 19380



COMMUNITY NEWS (continued)

Organized and established by Hershey's Mill's own Jean Back of Survival Essentials and Colleen Slusarczyk of Senior Helpers, this event featured professionals whose business it is to help people move more effectively throughout their daily routines.

At the Health Fair, Jean Back smiled knowingly at the standing-room-only crowd. "It's important for these folks to



know that help is out there if they need it," she notes. For example, Rite Aid and Giant deliver daily. "Now is the time to simplify, de-clutter and work at staying healthy," she adds. The Stay-In-Your-Home topic is very important to many Hershey's Mill residents.

Patrol Officer Tim Reilly of Westtown-East Goshen Regional Police was on site to collect unused medications. He noted that they also have a drop box at their station, as do other police units, for such purposes; "We just want to keep prescription medications out of the wrong hands."

Jean Back has compiled information for companies that attended the Health Fair. Contact her directly for this information or check her business website at www.survivalessentials.com.



BeauxTours.com

beauxtours@verizon.net
 1-800-701-6705

Tours for small groups in France

We Are NOT Happy, Unless YOU Are!

A to Z
APPLIANCE REPAIR

610-431-3338

Fully Certified & Insured LLC with 30 Years of Experience

Count on Us to
 Provide Low Prices, Rapid
 Response & Service on
 All Major Brand Appliances

- | | |
|-----------------|--------------------|
| ■ Refrigerators | ■ Ovens |
| ■ Dishwashers | ■ Washing Machines |
| ■ Microwaves | ■ Dryers |
| ■ Ranges | ■ Freezers |

AAA CAR CARE CENTERS

**YOUR AAA
 STORE OFFERS
 SO MUCH MORE**



Member Services:

- Travel Planning and Savings (Cruises, Tours and Hotels, Car Rental, Rail and Air)
- Exclusive Group Travel Discounts
- Discounted Movie Tickets*
- Free TripTiks®, Maps, and TourBooks®
- Discounted Luggage and Travel and Car Accessories

For all of your travel needs, contact your fellow Hershey's Mill resident, Stanley Krangel:



**AAA Wayne
 Car Care • Insurance • Travel Center**
 849 W. Lancaster Avenue
 Wayne, PA 19087
 610-263-8150, ext. 71261
skrangel@aaamidatlantic.com

*Movie tickets must be purchased in advance from AAA Mid-Atlantic to receive discount. Product selection varies by location. Movie tickets are not available in all AAA Mid-Atlantic stores. Movie tickets are available for select theater chains only. Check with store for details. Actual savings will vary based on theater location where tickets are redeemed and current adult box office rates. ©AAA Mid-Atlantic 2014

Original Programming	December 1-15, 2014			
Pipelines and Local Control - Part 1 State Senator Andy Dinniman discusses the proposed Sunoco Logistics pipeline with Chester County activists Lilli Middlebrooks, Tom Casey and Teddy Price.	10:00 am	4:00 pm	7:00 pm	12 am
Pipelines and Local Control - Part 2 The conclusion of the discussion of the proposed Sunoco Logistics pipeline.	10:15 am	4:15 pm	7:15 pm	12:15 am
Remembering Bill Campbell - Part 1 <i>With Charley Vogel</i> Bill Campbell, this dean of Philadelphia sportscasters, died in October at the age of 91. We honor his memory by replaying a two-part interview Charley Vogel did with Campbell in 2006.	10:30 am	4:30 pm	7:30 pm	12:30 am
Remembering Bill Campbell - Part 2 <i>With Charley Vogel</i> The conclusion of Charley's interview with Bill Campbell.	10:45 am	4:45 pm	7:45 pm	12:45 am

Movies Noon and 8:30pm	December 1-8 Clean Slate (PG-13) <i>Dana Carvey and Valeria Golina</i> A private eye is witness to a murder, but when he sleeps, a form of amnesia wipes his memory. [Run time 1h47m]		
	December 9-15 Crimes And Misdemeanors (PG-13) <i>Martin Landau and Woody Allen</i> A doctor desperate to end an affair, and an unhappy filmmaker struggling during a project. [Run time 1h44m]		

Bulletin Board	1:00am-10:00am	11:00am-Noon	Following the movie until 4:00pm
	5:00pm-7:00pm	8:00pm-8:30pm	Following the movie until Midnight

HMC-TV Channel 20 reserves the right to make program substitutions, and all dates and times are subject to change. The expressed opinions of reporters, guests, or advertisements in this publication or in any Channel 20 telecast shall not be construed as an endorsement by HMC-TV Channel 20. ©2014 HMC-TV

Original Programming	December 16-31, 2014			
Sacred Ponies <i>With Linda Lang</i> Linda interviews historical romance author Caroline Hartman about her new novel <i>Sacred Ponies</i> .	10:00 am	4:00 pm	7:00 pm	12 am
Byers Dolls - Part 1 <i>With Charley Vogel</i> The story of the Christmas-themed collectible dolls known around the world and made here in PA. First broadcast in 2005.	10:15 am	4:15 pm	7:15 pm	12:15 am
Byers Dolls - Part 2 <i>With Charley Vogel</i> More about the hand-crafted dolls that have become an integral part of the holiday season.	10:30 am	4:30 pm	7:30 pm	12:30 am
Byers Dolls - Part 3 <i>With Charley Vogel</i> The series concludes with Hershey's Mill resident Mary Jane Englebert and her Byers Dolls collection.	10:45 am	4:45 pm	7:45 pm	12:45 am

Movies Noon and 8:30pm	December 16-23 Cross Creek (PG) <i>Mary Steenburger and Rip Torn</i> Author Marjorie Rawlings moves to Florida in 1928 to run an orange farm and write the <i>Yearling</i> . [Run time 2h]		
	December 24-31 Blind Date (PG-13) <i>Kim Basinger and Bruce Willis</i> An ambitious executive is set up on a blind date. The beautiful woman comes with a warning – don't let her drink! [Run time 1h35m]		

To view Channel 20's Original Programming on your computer:

Go to www.hersheysmill.org, choose "Original Programming" from the "HMC-TV20" tab, then click "TV Original Programming".

To view or print the HM TV channels listing:

Choose "Cable TV Line-up". A listing is available for both the basic channel lineup as well as the complete Comcast channel lineup.

Ad deadline is the 22nd and will run the following two months at no cost. Limit description to 30 words per item, and include pricing and contact information.

Email submission to hmctvguide@comcast.net, attention Louise O'Brien, or place printed/typed copy in the Channel 20 mailbox outside the building. All ads are subject to review and editing. You must be a HM resident to advertise.

FOR SALE Henredon **entertainment center**. Holds 40" flat screen TV with storage for DVR, DVD tapes, disks and games. Blond oak, 6' tall. Perfect gathering place for electronic debris. \$200. Call

FOR SALE Beautiful **beveled glass mirror** 30" x 44". Great condition. \$25. Call

FOR SALE Portable **wheelchair ramp**, 8' aluminum suitcase style, excellent condition. Purchased new from EZ Access for \$650. \$400. Call

FOR SALE Small blue velvet **swivel rocking chair** for living room or bedroom. Excellent condition. \$50. Call

FOR SALE Solid walnut **Kawai Baby Grand piano** in very good condition. Tuned every 6 months. \$6,000 (Blue Book value is \$11,500). Ethan Allen full size **sleeping sofa** in good condition, two **side tables**, small **teak bookcase**, one **floor lamp**. Best offer. Call

FOR SALE Round **oak table**, 3' 6.5" wide, two 12" **leaves**, four **chairs**.

Excellent condition with perfect top. \$300. Rarely used **pine table** 3' 8" x 2' 2" with two ladder-back **chairs** with rush seats. \$100 or best offer. Call

FOR SALE Two **Drury rugs**, one 8' x 10' and one 6' x 9'. Off white background with muted color flowers. \$75 each or best offer. Call

FOR SALE Computer **monitor** 20", never used. \$50. Nordic Track **treadmill**. \$40. Two sets of **women's golf clubs**. Set 1: Irons 3 through 5W; woods 1, 3 and 5; putter and golf bag. \$50. Set 2: Irons 4/5 through 5W; woods 1, 3, 5 and 7; chipping iron; putter and golf bag. \$65. Call

FOR SALE Older 6-volt **electric golf cart**. \$250. Call



FOR SALE Cherry wood **executive desk** and leather **chair**. \$500. Call or (cell).

FREE One year old **cat** named Poppy, small and very loving. Call

WANTED Musicians to form a classic rock band: bass guitar, rhythm guitar, keyboard, lead guitar. For more information, call Mark at

Zagat Guide 2013

"Old World Charm..
Top Notch Service"

General Warren Inne

American Cuisine
Private Party Rooms
Live Music in Tavern
Elegant Guest Suites

9 Old Lancaster Rd Malvern, PA
610-296-3637
www.generalwarren.com

15% Food Discount at Lunch
for all Hershey's Mill residents
11:30am - 2:30pm Mon - Fri

We Specialize in Making
Our Customers Happy!

CORDES
CONTRACTING

40 Years of Experience & Craftsmanship

Proud 10 Year Resident!

- An Expert in Paint, Drywall & Carpentry
- No Job Too Small or Too Large
- Proud to be the Contractor of Choice at Applebrook Golf Club

Tim Cordes
610-209-7268

Marlene is making a difference...
For Listing or Buying Real Estate call

Marlene Gulczynski, GRI, CRS, SRES, CSP
Life Gold PAR Excellence
Seniors Real Estate Specialist

Call a **NEIGHBOR**
surrounded by her successes.

RE/MAX Main Line

Office: 610-640-9300 Direct Line: 610-701-9966
E-mail: Marlene@SoldbyMarleneG.com

Reiny Ludin | Yardley

Americans are very charitable people, especially in December. We Millers, collectively and individually, support many charities not only in December, but year round. Hershey's Mill Golf Club members and the Club itself fall

of The Folds of Honor Foundation. The Foundations goal is to aid in the education of spouses and children of the American military who were either killed in action or maimed as a result of their military involvement. Thanks to the involvement of our golf members and the leadership of Rick Blankley, we have ranked in the top 100 of the 3,300

Charity At The Club

into that category by supporting many local and national charities.

The women golfers of the Club are very active in their support of Play for Pink (P.I.N.K.) a group that contributes 100% of their proceeds to the Breast Cancer Research Foundation. Over \$900 was raised by women golfers in 2014. Pat Masters leads this successful fundraiser for the 9 and 18 hole women.

The men of the club have also been active in raising funds for cancer research in their support of Arnie's Army Charitable Foundation, named after golf legend Arnold Palmer, a survivor of prostate cancer. Both Bernie Burke and Eric Erickson have served as principals for the support of this vital charity.

Patriot Golf Day held annually across the country on the Saturday preceding Labor Day is the fundraising arm

participating golf clubs, having raised over \$40,000 in four years.

The women golfers also support the J. Wood Platt Caddie Scholarship Trust, the mission of which is to financially support deserving caddies of the Philadelphia area in their pursuit of higher education. In the 2014-2015 academic years, 187 caddies are receiving more than one million dollars in awards ranging from \$1,000 to



\$10,000. We are fortunate to have Pat Tallman coordinating this fine charity.

The Club, under the direction of Ed McFalls and Scott Martin, perform a

Eighteen holes of match play will teach you more about your foe than 18 years of dealing with him across a desk. – Grantland Rice



December Club Activities

- December 4Steak House Night
- December 6Brunch With Santa Noon
- December 7 & 14Member Brunch (space limited)
- December 11Holiday Buffet
- December 24-26Club Closed
- December 31New Year's Eve Dinner (space limited).....6-8 pm

Golf Tip

Most of your trouble shots around the green require you to choke down on your club for better control. In order to make it work, you have to do it correctly. Be sure not to just slide your hands down the handle from your normal address position. When you do this, you make the mistake of bending your knees and setting your

hands inside your shoulders creating a set up that is too cramped. The right way is to grip the handle first, then get into your posture bending from the hips with a little flex in the knees. This will make room for your swing without colliding with your body.

Matt Harvey, PGA

great service to the community with many in kind contributions. The Club is the home golf course for the Immaculata University golf team who use our course for both practice and intercollegiate competition. We also support the Middle Atlantic Blind Golfers Association, whose members and coaches annually play the HM Golf Club. Our golf pro, Matt Harvey, is involved with the group and states that they rave

about the course, the staff, and the Halfway House hot dogs. Many other local organizations are recipients of the largesse of the Club, from the Chester County Hospital to the Brandywine YMCA.

Thanks to all who contribute their money, time, and experience to these worthy charities. We have much for which to be thankful.

Humpty Dumpty Had a Great Fall.

www.SafeBathCo.com

Install Grab Bars.
Call Now **610-696-1693**

Low Vision? We Can HELP!

Read Books, Magazines, Prescriptions & More!

pebble HD
Electronic Magnifier

SAVE \$50
(Promo: 3052)

Call Keystone Magnification Today!
(610) 396-0999
www.KeystoneMagnification.com

No Dental Insurance, No Problem

Hershey's Mill Savings Plan \$150/year
Includes 2 cleanings, 2 exams and X-rays, and 25% off all other treatments

Hershey's Mill Special Pricing

- Crowns \$800
- Implants \$999*
- Full Denture Set \$1600
- Flexible Partial \$800

**Make appointment for details*

Ship Village Shopping Center
913 East Boot Road, West Chester
610-701-0102
www.ExtonDentalArts.com

Exton Dental Arts

CALMON PATIENT ADVOCATE

JULIETA CALMON

PATIENT ADVOCATE
(484) 802 1055
CALMONPATIENTADVOCATE.COM
CONTACT@CALMONPATIENTADVOCATE.COM

- RETIRED PHYSICIAN
- PROVIDES INDIVIDUALIZED CARE TO MEET SPECIFIC NEEDS
- ACCOMPANIES PATIENTS TO DOCTOR'S APPOINTMENTS
- HELPS COORDINATE POST-HOSPITAL CARE
- REVIEWS MEDICATIONS
- SPEAKS ENGLISH, PORTUGUESE & MEDICAL SPANISH

Featuring Hunter Douglas & Other Manufacturers

BLINDS 4 U
610-246-3100

Shop At Home Service for Hershey's Mill.
We Will Beat Any Printed Installed Price!

SALE

- Silhouettes
- Luminettes
- Pleated & Honeycomb Shades
- Duettes
- Country Wood Blinds
- Plantation Shutters
- Mini Blinds
- Verticals
- Roman Shades

Free Quotes ❖ Measuring ❖ Installation
Bottom line pricing all the time!

CLUBS/GROUPS ARE LISTED IN ALPHABETICAL ORDER

APPLE MAC CONNECTION

Carol Campanelli | Ulster

With the holidays may come new and perhaps bewildering electronics. If you don't have a grandchild near to explain your Mac "toys", come to the Community Center on December 27 with your device, if portable, for Bob Barton's help. There probably won't be refreshments this month, but you will likely be sated already with holiday goodies.

If you are on my email list, you will receive notice by 9am the morning of the meeting if it is cancelled for inclement weather or any other reason.

BABY BOOMERS BOOK CLUB

Mary Kay Hagerty | Heatherton

On Sunday, October 5, the Baby Boomers Book Club attended best-selling

author Lisa Scottoline's Book Club party at her home in Malvern. Over 200 book clubs from around the country were invited to meet Lisa (she hugged every guest!) and her daughter Francesca, who is sometimes her co-author. We toured her house and grounds, had refreshments, and listened to a humorous and insightful talk by Lisa and her daughter about writing and their warm and sometimes hilarious relationship.

The Baby Boomers Book Club meets the third Tuesday of every month at 6:30pm at Sullivan House. For more information call

DOMINOES

Sheila DiCroce | Devon

Join us for Mexican train dominoes and some fun with your neighbors. We meet Wednesdays from 1pm to 3:30pm upstairs in the Community Center. For additional information call

CHESS CLUB

Miki Sugar | Quaker

Meetings are on Thursday at 1:30pm in the Sullivan House. New members, or for more information, please call

COMPUTER CLUB

Don Trauger | Kennett

Be sure to attend the PC Club meeting on Tuesday, December 11 at 7pm in the Ardmore Room of the Community Center. There is a new topic discussed each month as well as a question and answer segment. So bring your questions and we will make an effort to get you answers.

OPEN BUNCO

Agnes O'Leary | Eaton

Open Bunco meets the second Tuesday of the month through April, with the exception of November, at the Community Center Hall. All are welcome, so bring your friends and neighbors. A \$3 fee is paid at the door and used for prizes that night. Doors open at 6:30pm for socialization and with the game promptly starting at 7pm. Play stops at 8:30pm. We are hoping for a group of 40 so please email if you wish to attend. Walk-ins are welcome as long as we have room. Contact Pat Phillips at _____ or _____, or Barbara Harney at _____

PINOCHLE CLUB

Erna Graham | Franklin

The Pinochle Club meets in the upper room of the Community Center on the

first and third Tuesday of each month, with play from 1pm to 3pm. We are low key and welcome anyone who has previously played or would like to learn to play. We don't play for money, and we start promptly at 1pm. Pinochle is a fun game and provides healthy mental activity. Our members are patient and enjoy interacting with new members. For more details, please call



POKER CLUB

Mike Brindisi | Jefferson

Are you interested in playing in a low stakes poker game and having fun for a few hours every Thursday evening from 7pm to 10pm? We play in the Community Center and all are welcome. Call for more information.

RUMMIKUB

Maryann Tracey | Ulster

We meet the second and fourth Tuesday of each month on the lower level of the Community Center from 2pm to 4pm. Join us for a fun game. For additional information call

STRESS MANAGEMENT

Anita Weeks | Kennett

Have stress? It may be that you have not found out yet how to change stress so that you can relax and give your body a chance to heal itself. Return your body to its relaxation response. Learn and practice remedies of mind/body health. Share your own secrets from a lifetime of experience. Classes are Thursdays from 7pm to 8:30pm on the lower level of the Community Center. RSVP at



Attending the Scottoline party were (left to right)

Mary Beth Snee, Mary Kay Hagerty, Christy Herschel, Maggie Weaver, Shari Eley, Nancy Ames, Diana Smyrl, Libby Reidy, Edie Egan, Margie Joyce, Eileen Rackover, and Jean Deal.

Don Trauger | Kennett

Microsoft Windows has always offered a Hibernation feature in their operating systems. Its purpose is to save all of the contents that are in RAM (Random Access Memory) to a file that is stored

Most new computers have this Hybrid Hibernation feature already activated when you start your computer. You can check this by right clicking the Windows Start button (lower left corner of the Desktop screen), click Control Panel, click the down arrow next to

Windows 8 and 8.1 Hibernation File Setting



on the hard drive when you shut down the computer. All that Windows needs to do when you power up is read that one file, instead of hundreds, and restore the contents back into RAM. The upside is that it results in a much faster start. The possible downside is that if you had a problem with Windows or a program before you shut down, then you will still have that problem when you power up. In a normal shutdown without using Hibernation, RAM is cleared and that sometimes solves problems such as freezes. Clicking Restart on the shutdown menu also clears RAM.

With Windows 8 and 8.1, the Hibernation feature works somewhat differently. When you shut down the computer it enters Hibernation automatically. However, it's not quite the same Hibernation as described above. It's a partial (Hybrid) Hibernation where Windows and device drivers are stored in Hibernation but your programs and your user session is not stored. This Hybrid Hibernation feature results in a faster booting system than if everything was stored when in hibernation.

Category near the upper right and choose large icons. This allows you to view all of the Control Panel items. Click Power Options. Click "Choose what the power buttons do" on the left. You should see a grayed out section at the bottom labeled "Shutdown settings". The Windows default should show, "Turn on fast startup" (recommended) and "Sleep" as being checked. Fast startup is the Hybrid Hibernation feature. If it isn't checked, click "Change settings that are currently unavailable" near the top of the window. When you click it all of the items now become available to check or uncheck. The Hibernation item is the full Hibernation where it stores everything in RAM when you shutdown. If checked it will appear on the shutdown menu. Sleep

keeps your session alive in RAM so a mouse click or keyboard key tap will bring the computer "awake" again. The lock feature should be unchecked as it's not needed in normal use. When finished making changes click the "Save changes" button at the bottom.

The directions above are for Windows 8.1. If you still have Windows 8 you absolutely should download and install version 8.1 from the Windows Store tile icon. However, with Windows 8, you can open the Control Panel on the All apps screen and proceed from there.

Now for an important setting change. I've discovered in some situations that Windows does not have the proper size set up for the Hibernation file. This can result in the computer freezing on boot because all of the data may not be stored or available on demand. I highly

recommend you make this following change even if the computer boots normally.

Right click the Start button, click Command Prompt (Admin). A black window will open. At the blinking cursor type: `powercfg /h /size 100`. Note there are spaces before the slashes and "100". Press the Enter key. You will see a large number appear in the window. This represents the total amount of RAM memory in your computer. I have seen stability and faster startups return to this simple change is implemented.

Come see Hibernation demonstrated at our PC Club meeting. It's held on the second Tuesday of each month at 7pm upstairs in the Ardmore room of the Community Center. It's open to all and no membership is required.

Deck Protect Plus LLC

610-202-0724

Deck cleaning and weatherproofing specialists, as well as professional handyman services – we help maintain and repair your home. A few services we offer: plumbing, painting, flooring, electrical and drywall repair.

Check our website for more information.

deckprotectplusllc.com

Joe Kennedy | Princeton

*"I can still see them charging us, burp guns blazing away."
 "... tracer bullets coming at me ... It was terrible but I made it back."*

These are just two of many recollections local combat veterans offered in 1989 for the 45th anniversary of the Battle of the Bulge. Most of those voices are, on the 70th anniversary of the Battle of the Bulge, silent. Yet there are still some veterans among us who remember.

Late in the summer of 1944, Germany was on the verge of losing World War II. The Red Army of the Soviet Union was pressing Germany on the east, and U.S. and British forces were on the Fatherland's western border. At that point, Adolph Hitler decided to play his last card in a gamble that



region of Belgium and Luxembourg. The goal was to take German forces over the Meuse River, then, head north to capture the port of Antwerp. This would effectively split the American forces and isolate the British. Surprise, speed and capturing U.S. gasoline supplies were the keys to Hitler's plan.

In early December 1944, the Germans secretly developed a 3-1 advantage in manpower and a 2-1 advantage in tanks in the Ardennes region, historians Williamson Murray and Allan R. Millett wrote in *A War to be Won: Fighting the Second World War*. Just before dawn on December 16, the German counteroffensive began. During the battle, the Germans created a triangular bulge of 50 miles at the base and 60 miles deep – thus the battle's name.

and none of our antitank weapons when the Germans attacked," Wojtusik said.

On December 19, two of three regiments of the 106th surrendered to the Germans. According to Murray and Millett, this represented a capture of nearly 8,000 soldiers. Wojtusik became a POW for the next six months.

In different circumstances, other soldiers chose to fight the odds. One was John Hyland of Havertown. Hyland, then 19, found himself on a dark, cold night in a crossroads village near Marche, Belgium, as part of a 20-man reconnaissance patrol of the 84th Division. The patrol had just spotted a Panzer column parked about 100 yards from the village. The orders were to engage the Germans if they went in. Suddenly the night was filled with the sounds of

One of the most dramatic actions of the Bulge was the duel between the 291st engineers Combat Battalion commanded by Col. David Pergrin of Wallingford and a German battle group of 4,000 men in an armored column commanded by SS Col. Joachim Peiper. Peiper was on a blitz with his Panzers to seize a bridge over the Meuse. He was ruthless in his pursuit, murdering 87 GI POWs at Malmedy, Belgium, and committing other atrocities against

Battle of the Bulge

December 1944 to January 1945



World War II

1939 to 1945

he hoped would stymie the Allies on his western front. Such a stalemate, he believed, would cause a rift between the Americans and the British, and thus take the pressure off his forces so he could shift some resources to the east to deal with the Red Army.

The plan called for a strike over a lightly defended 80-mile front in the Ardennes

Using artificial moonlight, by bouncing searchlights off low clouds, the Germans advanced with artillery, tanks and infantry.

One of the first and hardest hit units was the inexperienced 106th Army Division. Stanley Wojtusik of Philadelphia was an infantryman with the 106th. "We were on the line for just a few days, had little small-arms ammu-

engines and the clatter of tracked vehicles as the Germans got under way. At the moment, Hyland said, he believed he would not live to see his 20th birthday. But at the crossroads, the column turned away from the village. Within a few minutes, the Americans were alone and in silence.

civilians. But every time he tried to cross the Meuse he was stopped by the men of the 291st, who either blew up

Continued on page 53



MICHELLE AITKEN, DDS

SMILE SOLUTIONS

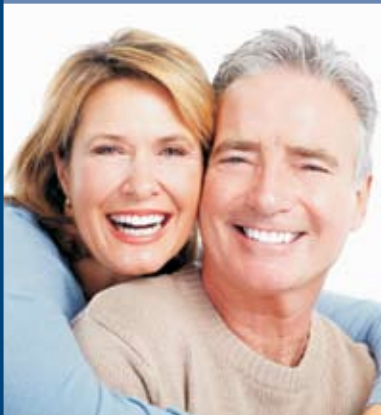
Exceptional Dentistry, Affordable Prices

HERSHEY'S MILL VIP DENTAL PLAN

\$199/yr

includes two cleanings, two exams, annual x-rays,
plus a 15-25% discount off treatment

- **15% Discount for Hershey's Mill Residents**
(Compare our fees to other dental offices in the area . . . You'll be surprised!)
- **Most Insurance Plans Accepted**
- **In-home Service for Dentures and Partial**
- **Fast turn-around on Dentures and Partial**
- **Digital, Low-Radiation X-Rays**



HERSHEY'S MILL SPECIAL PRICING

zcom! Whitening <small>(regularly \$750)</small>	\$299
Crown	\$850
Custom Full Set Denture	\$1,750
Flexible Partial	\$1,050
Reline	\$185

Located in the Hershey's Mill Village Shopping Center
1381 E. Boot Road • West Chester, PA 19380
(610) 918.4995 • brilliantsmilesdentalgroup.com

LOCAL HISTORY (continued)

the bridge or forced the Germans back in a firefight.

Mike Petrich of Bensalem took part in Patton's Third Army rescue of the encircled 101st Paratroopers at Bastogne, Belgium. Petrich, who commanded a mortar platoon, recalls riding in an open truck in the bitter cold in a dash north to relieve the "Screaming Eagles." A short distance from the 101st's position, Petrich fired smoke mortars to give cover to a group of GIs caught in a deadly German field of fire. But mostly, he remembers being cold, tired and hungry.

By January 1945, U.S. forces had reduced the German penetration.

Winston Churchill called the battle "a great American victory." Yet it was not without cost. U.S. forces suffered



81,000 casualties – 19,000 killed, 47,000 wounded and 15,000 captured in the Battle of the Bulge. The Germans suffered 100,000 casualties and lost 800 tanks.

Wrote Murray and Millett: "The defeat of the Germans in the Battle of the Bulge was a victory for the U.S. soldier. They reacted to a difficult situation with discipline and initiative."



DEL VACCHIO
LANDSCAPE & GARDEN CENTER

BUY FRESH
BUY LOCAL

- Landscape & Hardscape Services
- Design & Installation
- Mulch Delivery & Installation
- Annuals, perennials, hanging baskets and vegetable plants

Located between
Greenhill Rd & Paoli Pike
 PAHIC #5435
 Landscape & Garden Center
 Landscape Design & Maintenance
 Holiday Décor
 922 North Chester Road
 East Goshen, PA 19380
Phone: 610-692-2422
www.delvacchio.com



The best care comes
in the comfort of home.

BAYADA Home Health Care
 provides nursing and assistive care
 24 hours, 7 days to keep people of
 all ages safe at home.
 Call **610-255-7307** | www.bayada.com



BAYADA®

Home Health Care

Compassion. Excellence. Reliability.

To those who love the traditions of the holidays, eggnog is a must. Our family has been collecting and tinkering with this magical elixir as far back as anyone remembers, though most of the recipes here are based on 1940s classics. The selections here have been updated for clarification and ease of use while retaining the important character of the originals. These are large batches as is typical, so many friends and family, and much cheer, are a must.

There is nothing “lite” about a traditional eggnog, and the liquor is measured in cups not ounces! We suggest small glasses for all, and the timid may want to avoid the more potent such as the Rappahannock. Since any eggs, sugar, dairy and liquor, good

quality ingredients really shine; and fresh grated nutmeg matters. We recommend pasteurized eggs for those with health concerns; and all eggnog variations should be kept cold.

Our recipes have lots of hand written guidance such as “go at the egg yolks strenuously until the arms of two aunts are exhausted”; for you, we suggest a mixer will be of great help. When we make a variation without the egg whites, meringue cookies always seem to find their way to the cookie tray.



Beltway Bourbon Eggnog

- 1 dozen fresh eggs
- ¾ cup granulated sugar
- 1 pint Bourbon
- 1 pint dark rum
- 6 fluid ounces peach cordial
- 1 quart whole milk
- 1 quart cream
- Freshly grated nutmeg

Separate egg yolks and beat well, then gradually beat in the sugar; then half of the milk, then the whiskey and rum. Refrigerate 15 minutes, then add remaining milk, cream, and peach cordial. Beat egg whites until stiff, and fold into the mixture. Grate nutmeg over glasses at service; serve cold.

Old Virginia Eggnog

- 1 dozen fresh eggs
- 2 ¼ cups granulated sugar
- 1 quart brandy
- 1 pint dark fruity rum (Jamaican)
- 1 gallon heavy cream

Separate egg yolks and whisk until light and frothy, then gradually add in the sugar; then alternate shots of the brandy and rum until incorporated; then add ¾ of the cream. Lightly whisk ½ the egg whites and add. Whisk



remaining egg whites until very stiff, then mix in sugar; whisk remaining cream until softly whipped and fold into above. Fold the two mixtures together. Refrigerate for 12 hours; serve very cold with a spoon (it’s thick!).

Frozen Eggnog

- 1 dozen egg yolks
- 2 ¼ cups granulated sugar
- 1 gallon cream, whipped
- 1 pint brandy

1 pint light rum
Whisk yolks until light in color, add the sugar, then the whipped cream. Freeze until nearly firm in lidded container. Add brandy and rum and shake until just mixed well. Can be done individually in cocktail shaker as well.

Rappahannock Eggnog

- 1 dozen egg yolks
- ¾ cups powdered sugar
- 3 pints whiskey
- 1 ½ cups brandy
- 6 fluid ounces peach cordial
- 1 ½ cups dark rum (Puerto Rican)
- 3 pints whole milk
- 1 pint whipping cream

Whisk yolks until very light in color (may take quite a long time), then gradually add the sugar. Whisk in

the four liquors a bit at a time,

then the milk, and then the whipping cream. Refrigerate at least 4 hours or overnight.

Leonine Eggnog

- 1 dozen fresh eggs
- ¾ cup granulated sugar
- 3 pints rye whiskey
- 1 quart whole milk
- 1 pint heavy cream
- 1 whole nutmeg, freshly grated

Separate egg yolks and whisk until light and frothy, then gradually add in the sugar until entirely dissolved. Whisk in rye whiskey, then heavy cream. Whisk egg whites until soft peaks, and fold into mixture along with grated nutmeg. Serve very cold.

Maryland Eggnog

- 2 dozen fresh eggs
- 1 pint cognac
- 1 pint dark rum
- 1 cup brandy
- 1 cup apple brandy
- 7 cups powdered sugar
- 3 quarts whole milk

- 1 quart light cream
- 1 pint heavy cream

Separate egg yolks and whisk until light and frothy, then whisk in liquors starting with cognac. Whisk in sugar, then the dairy in order listed. Refrigerate at least 6 hours. Whisk whites until stiff and fold in when ready to serve.

California Eggnog

- 1 dozen fresh eggs
- ¾ cup light brown sugar
- ¾ cup whiskey
- 1 teaspoon freshly grated nutmeg
- ½ cup brandy
- ⅓ cup light rum
- 1 cup half-and-half
- 1 pint whipping cream

Separate eggs and whisk yolks until very light in color (may take quite a long time), then whisk in the sugar until completely dissolved. Whisk in the whiskey and nutmeg. Whisk egg whites until soft, and add to mixture. Whisk in brandy and rum. Whip cream until firm, and fold into mixture until completely incorporated. Serve cold.



Quality Care by Caring Professionals

We are committed to the philosophy that Barclay Friends must be a good place to work if it is to be a good place to live.

Barclay Friends

A KENDAL AFFILIATE Together, transforming the experience of aging®

A Continuing Care Community with Post-Acute Rehabilitation



"The staff at Barclay Friends is well-known for its longevity and reputation for care."

—Brooks Adams Research

700 N. Franklin Street
West Chester, PA 19380
610-696-5211
www.bf.kendal.org



©2012 The Kendal Corporation

EEO/ADA/LEP



ACTIVITIES CONTACTS

Alzheimer's/Dementia Support Group.....	Barbara Mulvey
Art Group.....	Dave Linton
The Baby Boomers	Christy Herschel
Bible Study (Women's).....	Marian Malloy
Bingo.....	Ollie Price
Book Discussion Group.....	Anne McAssey
Bowling	Frannie Lytle.....
Bridge Groups:	
WH Duplicate, Mon. 12:30pm.....	Joey Livesey.....
WH Duplicate Bridge, Mon. 7pm.....	Lee Gamma
Golf Club Tuesday Bridgers, Members Only.....	Roger Gibboni.....
Social Club Party Bridge, Members Only.....	Susan Hackstaff.....
Golf Club Friday Bridge, Members Only.....	Dave LeGrow
Bus Trips	Marc Fraser.....
Card Games	Penny Adolf
CareSharers	(Answering Service).....
Chess Club	Miki Sugar
Chester County Hospital Auxiliary.....	Constance Campbell.....
Community Center Reservations	(Answering Service).....
Computer Club (PC).....	Don Trauger.....
Computer Club (Apple Macintosh).....	Carol Campanelli
Cradle Stitchers.....	Donna Faunce.....
English Darts.....	Sam Arcana
Exercise Groups:	
Aerobic Dance/Exercise.....	Barbara Thomas
Ageless Exercise.....	Gayle Ulrich.....
Tai Chi	Mitch Goldfarb.....
Yoga.....	Ellie Sybesma
Havurah (Friends Group)	Tillie Markowitz
Garden Club.....	Jim DiCarlo
Golf Club.....	Scott Martin
Investment Group.....	Fil Rizzo
Knitting Circle	Bernice Soffer.....
Library Board.....	Becky Bell
Mah Jongg.....	Erna Graham
Model Railroaders.....	Dave Voorhees.....
Paoli Hospital Auxiliary.....	Patty Murphy.....
Pinochle Club	Erna Graham
Players	Frannie Lytle.....
Poker Club	Mike Brindisi
Pool.....	Carol Campanelli
Quilters.....	Mary Bauchman
Rummikub	Maryann Tracey.....
Singers	Bonalyn Mosteller.....
Social Club.....	Lee Gamma
Sports Group.....	Helen Greco
Stress Management.....	Anita Weeks.....
Sullivan House Reservations.....	(Answering Service).....
TV Channel 20.....	Don Trauger.....
Wood Shop.....	Ben Ellis

Additional contacts available in the annual *HM Resident Directory*

Stowers

Handyman Service LLC

Home Maintenance & Repairs

- Carpentry
- Painting
- Drywall Repair
- Tile Grouting
- Tub Caulking
- Window Repair
- Furniture Moving
- Hand Rails Installed
- Floor Repair
- Kitchen Faucets

and lots more!

Resident handyman serving all Hershey's Mill villages

Call Dan Stowers
484-467-3361

Fully Insured
Reg. # PA 061617



10%
Discount
with
this ad

DECK TOO HOT?

A STATIONARY AWNING OR RETRACTABLE AWNING CAN DOUBLE THE USE OF YOUR DECK. ALL AWNINGS ARE CUSTOM MADE IN OUR SHOP FOR THE GREATEST SAVINGS — TO YOU!

INSTALLATIONS - ESTIMATES ARE ALWAYS FREE
AWNINGS • TENT RENTALS
BACK LIT AWNINGS • SINCE 1928

call 302-652-6612

E.W. BROWN, Inc.

ADVERTISERS' INDEX

3D Autobody & Collision Centers.....	22	Hershey's Mill Realty.....	3
AAA Car Care Centers – Wayne.....	37	John S. Price, Jeweler, Inc.	28
Angel Companions	2	Kevin Free.....	24
A to Z Appliance Repair	36	Keystone Magnification.....	45
Barclay Friends	56	Knots & Weaves	26
Bayada Home Health Care.....	53	MacLaren Fabrication.....	28
Beaux Tours.....	36	Oliver.....	29
Blinds 4 U.....	45	Oriental Pearl Restaurant.....	22
Boyles Flooring.....	15	Paoli Hospital.....	33
Brewer Heating & Air Conditioning.....	8	Paoli Rug Co.....	20
Brooklands Audiology, Inc.....	59	Podiatry, Ronald Melincoff, DPM.....	2
Buckley, Brion, McGuire & Morris LLP	27	Podiatry Care Specialists.....	18
Calmon Patient Advocate.....	45	RE/MAX Main Line	41
Chester County Orthopaedic Associates.....	6	Richard J. Egan Painting Co.....	18
Cordes Contracting	40	Riddle Village	12
Deck Protect Plus LLC.....	49	Ruggeri Cadillac	4
Del Vacchio Landscape & Garden Center	53	Safe Bath	44
E.W. Brown, Inc.....	56	SarahCare	18
Exton Dental Arts	44	Senior Helpers	32
Franklin Auto Spa	20	Seniors Helping Seniors.....	14
General Warren Inne.....	40	ShelfGenie.....	23
Genuine Healthcare Resources	29	Smile Solutions	52
Haller Enterprises, Inc.	32	Stowers Handyman Service LLC	56
Hershey's Mill Landscape.....	29	Surrey Services for Seniors	8
		Survival Essentials.....	8
		Toninos Pizza & Pasta Co.....	28
		Wagner Real Estate, Inc.....	60
		Wellington.....	36

HMC-TV thanks our advertisers for their support.

When you contact one of our advertisers, make sure to mention that you saw them in the *Guide and Digest!*

I Listen...

so you can hear better!

**Patricia A. Cohen MA CCC
Licensed Audiologist**



Brooklands Audiology inc.

Meeting Your Hearing & Budget Needs

Over 25 years experience

Serving Hershey's Mill for over 12 years

Complete Hearing Care

State of the Art, Rechargeable, Virtually Invisible

Digital Hearing Aids

Testing Repairs & Service

Amplified Telephone & TV Devices

Hershey's Mill Courtesies

20% off already discounted Hearing Aid Prices

0% Financing Easy Payment Plans 60 Day Trial Period

Free Monthly Hearing Screenings at the Community Center

I represent you to the Major Manufacturers

Please Call 610-408-9250 for appointment

301 Lindenwood Dr. Malvern – Off Rt 30 2 Lights North on Rt 29

Across from Wegmans



Pat Meehan
610-574-2465
Eaton Village

John Clarke
610-547-3861
Eaton Village

Lynne Carter
610-291-1282
Kennett Village

Trust the team that lives here to sell your home.

We sell homes exclusively in Hershey's Mill – so we have a unique understanding of the real estate market here. Using our knowledge and expertise, we will market your home to get you the best price possible.

We've sold hundreds of homes throughout the Mill and we are ready to sell yours. After all, we *live the lifestyle we sell.*

Selling • Buying • Estates
Serving clients exclusively within Hershey's Mill
www.HersheysMillTeam.com



WAGNER INC.
REAL ESTATE
4 Generations Since 1930

610-446-2300