

JANUARY 2015

# GUIDE — AND — DIGEST



---

A PUBLICATION OF HMC-TV AT HERSHEY'S MILL

# Healthy Feet for an Active Life

Conservative, non-surgical options for most foot conditions



## DR. RONALD H. MELINCOFF

Primary Podiatric Medicine

Fellow American Professional Wound Care Association  
Specializing in the Care of Diabetic and Medically-At-Risk Feet

Day and evening appointments  
**610-692-0578**

Goshen Executive Center, Suite 200-B  
1450 East Boot Road  
(Boot Road and Paoli Pike – Opposite CVS)



### ANGEL COMPANIONS®



Affordable and compassionate care by a locally owned and managed company - we are licensed and our employees are bonded & insured.

Please call for a free assessment:

**610-644-8780**

### Home Care for Seniors

- Personal care
- Hospice assistance
- Meal preparation
- Medication reminders
- Laundry
- Light housekeeping
- Companionship
- Transportation

**Ask about our  
Live-in Program**

[www.angelcompanions.net](http://www.angelcompanions.net)

# Your On-Site Real Estate Team at Hershey's Mill

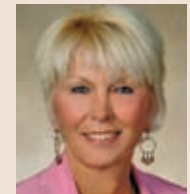
Our experienced team has sold more homes in Hershey's Mill than any other, and has been doing so since 1978. No other agency captures buyer interest like our *on-site* office provides.

In a complex market, it takes more than a basic listing to achieve your goals. So when you need market information, are planning to sell, or looking to purchase, we invite you to stop in at the only full service real estate office at Hershey's Mill. Selling homes here is our *only* business.

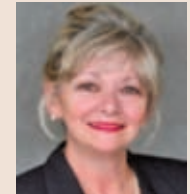
We are located at the Main Gate, and open 7 days a week, so you can meet with an agent when it is convenient for you.

**610-436-8922**

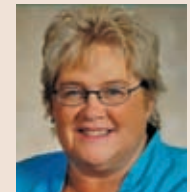
[www.hersheysmillrealty.com](http://www.hersheysmillrealty.com)



Lillian Willis



Monica Connolly



Carol Flynn

1500 Greenhill Road, West Chester, Pennsylvania 19380

Office hours are Monday-Saturday from 10-5 p.m.,  
Sunday from Noon-5 p.m., and by appointment.

*We recommend an appointment for viewing properties.*

**Hershey's Mill Community-TV**

A fully self-supported nonprofit organization.

20 Hershey's Drive, West Chester, PA 19380  
Tel 610-436-5922 • Fax 610-436-6429

Guide and Digest Email: [hmctvguide@comcast.net](mailto:hmctvguide@comcast.net)  
Business Email: [hmctv@comcast.net](mailto:hmctv@comcast.net)



**HMC-TV Board of Directors**

Donald J. Trauger, *President*   Carl Fletcher, *Vice President*   Louise O'Brien   Lee McCarthy  
Margie Joyce, *Treasurer*   Helen Heller, *Secretary*   Jack Keeley

All submissions are welcomed (including articles no longer than 500 words). HMC-TV reserves the right to determine suitability. Send to [hmctvguide@comcast.net](mailto:hmctvguide@comcast.net), Attention Editor. Hardcopy articles are no longer accepted. Submissions must be received five weeks in advance of the issue (no later than the 22nd of the previous month) for possible inclusion in the HMC-TV *Guide and Digest*. Any article received after that date will be reviewed for publication the following month. All articles are subject to editing for space, clarity, and grammar. Contents are from various sources; the information and opinions presented are those of the author, and may not reflect those of Hershey's Mill Community-TV, its officers, or directors.

**HMC-TV Guide and Digest**

Volume XVI Number 1 – January 2015

**Editor** Louise O'Brien

**Featured Writers**

Gay Barry, Joe Kennedy, Louise O'Brien, Sally Shabaker, Don Trauger

**Advertising/Marketing Director** Jack Keeley  
**Marketing Finance Director** Gerry O'Brien

**Volunteer Coordinator** Lee Gamma



**From The Main Gate** 7

**Resident Directory Changes** 7

**Just In Time** 8



**Getting To Know You** 10

**Master Association** 14

**HM Bus Trips** 16

**HM Series Trips** 21



**SH Holiday Open House** 24

**Dining Out** 26

**HM Library News** 28

**Activities Calendar** 32



**Community News** 36

**HMC-TV Ch20 Programming** 40

**Classifieds** 43



**Medicare ADP** 44

**HM Golf Club** 46

**Club News** 50



**Technology Tips** 52

**Local History** 54

**Recipes** 58



**Activities Contacts** 61

**Advertisers' Index** 62

**Ruggeri Cadillac Moving Sale Event**

During our Moving Sale Event Mark Ruggeri is selling 2014 and 2015 Cadillacs at GM Supplier Prices.

(2015 ATS Coupe & Escalade excluded)



Moving 1 mile south to 1550 Wilmington Pike. New location, same great commitment!



**610-455-1700**

[RuggeriCadillac.com](http://RuggeriCadillac.com)

1265 Wilmington Pike (Rt. 202)  
West Chester, PA 19382

**RUGGERI CADILLAC**  
OF WEST CHESTER

Superior Cadillac Sales & Service in Chester County Since 1933

**Cover:** A favorite resting spot atop the hill at Sullivan House awaits the summer's sports activities below or a warm sunset reflected in the pond.

# FOOT AND ANKLE CARE IN CHESTER COUNTY IS NOW JUST A STEP AWAY



**Orthopaedic Surgeon**  
**Greg Kirwan, D.O.**  
Foot and Ankle Specialist

- Specializing in operative and nonoperative treatment in all areas of foot and ankle disorders
- Focuses on being YOUR partner in foot and ankle care
- Practices at our West Chester and Kennett Square offices of Chester County Orthopaedic Associates



THE ORTHOPAEDIC CENTER  
Chester County Orthopaedic Associates

We specialize in:

- MINIMALLY INVASIVE SURGERY
- TOTAL JOINT REPLACEMENTS
- SHOULDER RECONSTRUCTION
- SPORTS MEDICINE
- FRACTURE CARE
- SPINE CARE
- HAND SURGERY AND REHAB
- PHYSICAL THERAPY
- MRI
- SPINAL SURGERY
- FOOT AND ANKLE CARE

Our Team:

- |                       |                      |
|-----------------------|----------------------|
| John Benner, MD       | Chet Simmons Jr., MD |
| Jeff Citara, DO       | Mark Tantorski, DO   |
| Robert Huxster, MD    | Adrienne Towsen, MD  |
| Todd A. Michener, MD  | Richard Ziegler, MD  |
| Matthew Schaeffer, MD | Greg Kirwan, DO      |

**West Chester**

915 Old Fern Hill Road  
Building A, Suite 1  
West Chester, PA 19380  
T: (610) 692-6280

Mon - Fri, 8:00-4:30

**Kennett Square**

400 McFarlan Road  
Suite 100  
Kennett Square, PA 19348  
T: (610) 444-1344

Mon - Fri, 8:30-4:00



visit us at [ccortho.com](http://ccortho.com) or [premierortho.com](http://premierortho.com)

## FROM THE MAIN GATE

Marc Fraser | Director of Security

The Security Department would like to thank all of the people who donated

to the Security Department Christmas Fund. Your generosity is greatly appreciated, and we look forward to serving you in 2015!

## RESIDENT DIRECTORY CHANGES

Arnold, David & Susan

Connors, Francis & Joan

Levengood, Walter & Jacqueline

Baffa, Mary

DiCandilo, Angelo & Marie

McCoy, Sandra

Blank, Julie

Eberlein, Warren & Janet

McDonald, John Jr. & M. Suzanne

Castaldi, Frank & Sue

Jelinek, David & Dana

McGuire, Joseph & Patricia

Shea, Kathy

Snee, Joe

Starzenski, Barbara



Sunrise at the Hershey's Mill pond. Photograph taken by Maryellen Holden of Princeton Village during an early morning walk.

Phyllis J. Panico | Ulster

The piano, first known as the pianoforte, was developed from the harpsichord around 1720, by Bartolomeo Cristofori of Padua (that would be in Italy). Cristofori was the keeper of instruments in the court of Prince Ferdinand de Medici of Florence. His success was his various innovations in harpsichord construction. He solved the funda-

mental mechanical problem of design; that is, the hammers must strike the string, but not remain in contact with the string (as a tangent remains in contact with a clavichord string) because this would damp the sound. Moreover, the hammers must return to a resting position without bouncing, making it possible to repeat a note rapidly. Hence, sound is produced by striking steel strings with felt hammers that immediately rebound to allow the string to continue vibrating. The vibrations are transmitted through the bridges to the soundboard, which

amplifies them. Depending on the classification system, a piano may be considered a keyboard, percussion, or string instrument. Around 1780, the upright piano was created by Johann Schmidt of Salzburg, Austria and in 1784, piano pedals were introduced by the Englishman John Broadwood. In 1802, Thomas Loud of London built an upright piano with strings that ran diagonally. By then the

pianoforte had ousted the harpsichord as the standard keyboard instrument and continues to enjoy a central place in music.

The Mozart-era piano (1790 to 1860) underwent tremendous changes, which led to the modern instrument that we know – five octaves of pre-Mozart's day to the 7½ or more octaves found on modern pianos. Interestingly enough, the piano was nearly a hundred years

old by the time Beethoven was writing his latest sonatas (around 1802-1812).

The modern piano has 88 keys (seven octaves plus a minor third). Most, but not all pianos have three foot pedals. The soft pedal or “*una corda*” is left-most in the row. The depression of this pedal will move the whole set of hammers very slightly sideways so as to leave out one of every three strings for each note, hence the name *una corda*, Italian for ‘one string’. The

damper pedal (also called sustaining pedal) is to the right of the grouping. When it is pressed, all the dampers on the piano are lifted at once, so that every string can vibrate. This assists the pianist in producing *legato* (smoothly connecting notes) in passages where no fingering is available to make this otherwise possible. Also, raising the damper pedal causes all the strings to vibrate sympathetically with whichever notes are being played; thereby greatly enriching the tone. The middle pedal, *sostenuto*, maintains any damper that was raised at the moment the pedal is depressed. This makes

it possible to sustain some notes (by depressing the pedal before notes to be sustained are released) while the player's hands are free to continue to play.

Beethoven, through meticulous indications in his compositions, considered the pedal to be an integral part of his sound. Composers of the subsequent Romantic era used the pedal imaginatively to expand the tonal palette. Anton Rubinstein felt that the pedal was ‘the soul of the piano’. Franz Liszt said, “Without the pedal, the piano would be some kind of chopping board.” Piano works by Debussy and Ravel would be quite different without the use of the pedal, as “it allowed them to translate into music the aesthetics of their painter-counterparts, the Impressionists.” So, let's gather around the piano and enjoy the glory of the sound.



## A Brief History Of The Piano

VOTED #1 FLOORING STORE BY MAIN LINE & DAILY LOCAL READERS

**Boyle's**  
Floor & Window Designs

Where PERSONAL SERVICE Makes the DIFFERENCE

705 E. Gay Street ■ West Chester  
www.BoylesFlooring.com ■ 610-429-9773

Citations: Banowetz, Joseph; Elder, Dean (1985). *The pianist's guide to pedaling*. Bloomington: Indiana University Press. Parakilas, James (1999). *Piano roles: three hundred years of life with the piano*. Yale University - New Haven, Connecticut. <http://www.pianoworld.com/>, retrieved 28 December 2006, revised 12/2013.

Sally Shabaker | Kennett

*It was just another night  
With a sunset  
And a moonrise not so far behind  
To give us just enough light  
To lay down underneath the stars  
Listen to all the translations  
Of the stories across the sky  
We drew our own constellations*

From the song "Constellations"  
by Jack Johnson

Did you ever just lay back in the grass or on a lounge chair and study the sky at night? It's a mystical experience to realize how vast is the night sky and how small we are in comparison. Years ago in the south of France while visiting friends with my two twenty-something sons, we were sitting around our hosts' pool after a roasted duck dinner with abundant wine. Suddenly Michél spotted a falling star. We spent the rest of the evening studying the dark,

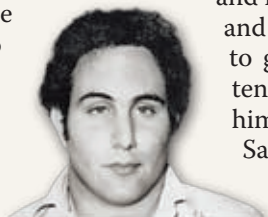
dazzling sky. We had no telescope, just our bare eyes as Michél pointed out the stars, planets and constellations overhead. My sons and I will never forget that magical experience, though it didn't lead us to a serious interest in astronomy.

Dennis O'Leary, on the other hand, became interested in stars, satellites and space at a young age. "I remember going to Boy Scout camp. The leaders pointed out the constellations in the sky as we sat around a campfire," says Dennis. "Later, when I decided to work towards an astronomy merit badge, among other things, I charted how the stars moved across the sky. My lifetime interest had begun."

Dennis was ten when the Russians launched *Sputnik*. "I was at an impressionable age when the Space age took off. Soon after *Sputnik*, America launched *Mercury*, *Gemini* and eventually the *Apollo* missions which landed people on the moon," Dennis explains.

**Remember Son of Sam?**

The infamous NYC serial killer Son of Sam shot and killed six people and injured others in 1977. A team of over 200 city detectives worked on finding him before he killed again. When he was arrested, Dennis was in charge of court security for the Brooklyn Criminal Court when David Berkowitz, a.k.a. Son of Sam, was arraigned. Dennis shares, "I was one of the first people to actually see him. He just looked like the kind of guy who could be easily bullied. He



was not a threatening, imposing figure, but more like a milquetoast." "After he was arraigned," says Dennis, "there was a great concern for his safety as he was being transported to jail. To avoid exposing him to an angry public and the swarming press, we sent a police car out of the court building with the siren on and lights flashing. The bystanders and media people chased after it to get a look at him. Then after ten minutes or so, we quietly sent him out of the building." Son of Sam is still in jail serving two life sentences.

"It was all going on right in front of me as I was growing up, and I was paying attention."

"Carl Sagan's television series *Cosmos*, and the pictures from the *Voyager* missions brought outer space closer to us. I was fascinated," Dennis notes. How-

Before moving to Hershey's Mill, the O'Leary family lived in New Jersey where Dennis joined the STAR Astronomy Club and volunteered at the Raritan Valley Community College Planetarium. "I helped with tours, shows and the star projector in the planetarium,"

# Stargazing With Dennis O'Leary

Eaton

## *Nasa Solar System Ambassador*

ever, his interest in astronomy went dormant while he and his wife Agnes were busy raising a family and pursuing their careers. "Then in 1999, Agnes and my three children



Dennis takes his telescopes out when something special is happening in the sky. He often invites neighbors to enjoy viewing with him. Here he is seen with his Celestron NexStar 11 GPS (left) and his personal solar telescope Coronado PST.

asked me, 'What would you really like for Christmas?' My answer was a telescope, and that was my first telescope, a small portable model that can be easily transported. I still use it today when I visit schools."

he says with a glow of pride. That was when he began to go into local schools with a planetarium-sponsored program as an outreach astronomer. "They sent me out to schools with a 22 foot diam-

*Continued on next page*

eter by 14 foot high portable dome that folded into a duffle bag. It could hold two classes, and I put on a star show for the students.”

At the same time, Dennis began volunteering for the planetarium’s Project Astro program that enabled school students to participate in hands-on

activities which made astronomy more meaningful to them. Fifteen years later he is still volunteering to present Project Astro in the West Chester School District, visiting schools four times each school year. Dennis also earned twelve graduate credits in astronomy

**Up close with Dennis**

**How long have you lived at Hershey’s Mill?**

Three years. We moved here to be close to our two daughters and four granddaughters, ages 2, 3, 4 and 5.

**Where did you live before moving here?**

We both grew up in Brooklyn, New York; later moving to Middletown, NJ, where we lived for 30 years.

**Chief occupation or activity before you retired?**

I worked for the New York State Court System for 38 years. I started as an officer in the Criminal Court and became the Captain in charge of Brooklyn and Staten Island Criminal Courts. I went to law school at St. John’s University in Queens for four years at night, while continuing to work at the court. After graduating and passing the bar in New York and New Jersey, I continued to work for another 18 years in the Brooklyn

Supreme Court as a law clerk to a Justice.

**Best thing about retirement?** I don’t have to commute anymore. I commuted two hours each way every day.

**In what activities are you involved at Hershey’s Mill?** I’m a member of Eaton Village Council. I play golf, pickleball, Bunco and am a member of the Boomers Club.

**Any advice about growing older?** I’ll let you know when I get there.

**Favorite song?** Our wedding song, “The Twelfth of Never”.

**Favorite book?** *Cosmos* by Carl Sagan.

**Favorite movie?** *Animal House*; It reminds me of college.

**Favorite food?** It’s a close call – potato chips or ice cream.

and attended the Advanced Space Academy in Huntsville, Alabama.

In 2006 Dennis applied to NASA’s Jet Propulsion Laboratory to become a NASA Solar System Ambassador and was accepted. “Through the Ambassador program I’ve attended launches at the Kennedy Space Center



and received additional training at the Johnson Space Center in Houston. I’ve had VIP tours of these places, something I never imagined I would do,” he says.

“I’ve also helped out for three years at Jet Propulsion Laboratory open houses where I’ve been assigned to assist several space mission crews interact with the public and give talks explaining the objectives and results of the missions,” Dennis proudly notes.

Speaking of giving talks, Dennis has given quite a few locally including Delaware County Community College, Chester County Astronomical Society at West Chester University – and even more locally to the HM Quester’s Club and the HM Boomers Club.

*Take note: on February 9 at 2:30pm, Dennis will speak to the Chester County Astronomy Club*

*at West Chester University on “New Horizons Spacecraft and Pluto.” The New Horizon Spacecraft was launched nine years ago, and travelling at 45,000 MPH, will reach Pluto in July 2015. The public is invited. Don’t miss it!*

Plumbing Services Available Now

**Serving West Chester for 4 generations as your neighborhood contractor.**

**HM Residents - Mention this ad and receive 10% off new service contracts! Ask about rebates, credits & financing.**

**610-692-5252**

[www.brewersheatandair.com](http://www.brewersheatandair.com)

**We Do The Work, So You Don't Have To.**

*Downsizing to move can be overwhelming.*

*Call Survival Essentials.*

**610-804-8646**

[www.SurvivalEssentials.com](http://www.SurvivalEssentials.com)

Jean Back/Chandler Drive/Hershey’s Mill

The Master Association Budget is the largest line item in Village budgets, and this article is intended to help Hershey's Mill residents understand what is behind that number. What does the \$141.33 per month cover?

**Cable and Sewer**

For these two services, a direct comparison can be made to what others in the immediate area pay. In both cases, HM rates are less than half of what other local residents pay for similar service.

**Amenities**

These include facilities such as sports venues and buildings that are here for the use and enjoyment of all residents. This is another area that sets HM apart from our competition.

**Security**

This consists largely of personnel expenses for our 24/7 gated community, but also includes the central monitoring for fire and smoke, as well as the operation and maintenance of the

**Administration**

This covers the items as listed in the budget, and is self-explanatory.

Understanding the items that are part of your Village budget is important in order to appreciate the value we all receive for our monthly assessment. It

is also important to be able to explain the budget to our friends who are considering Hershey's Mill as their future home. The two Open Community Days held last year revealed that monthly fees and what is included are major questions visitors had about Hershey's Mill; as well as local tax questions.

# Understanding The Master Association Budget

**Buildings and Reserves**

This is where monies are set aside for future expenditures of a capital nature. Some of the items that are reserved for are: roadways, pavement and walking trails, walls, fences, barriers, buildings, and fountains.

**Grounds Maintenance**

HM's excellent grounds maintenance, particularly the landscaping, set us apart from other Active Adult communities, and is one of the key features that new residents identify as a reason they selected The Mill.

computerized Gate Entry System. It also provides for the "Lock-and Leave" capability that enables us to have worry free time when we are away for extended periods.



## Master Association Budget for 2015

	Per Unit, Per Month
Building Maintenance and Reserves .....	\$22.59
Grounds Maintenance .....	\$21.65
<i>Landscape, snow, stormwater, and fire hydrants</i>	
Amenities .....	\$8.30
<i>Community Center, Sullivan House, wood shop, library, sports groups, and bus</i>	
Cable .....	\$31.64
<i>Average rate in surrounding area is \$50 to \$80</i>	
Security .....	\$28.47
Administration .....	\$9.52
<i>Management, insurance, audit, health, and miscellaneous</i>	
Green Hill Sewer .....	\$19.16
<i>Average single family rate in East Goshen is \$46</i>	
<b>Total</b>	<b>\$141.33</b>

**Kevin Free**  
*"the ultimate handyman"*



**General Home Repair**

Painting/Wallpapering (including decorative) • Carpentry • Power Wash/Stain Decks  
 Minor Electrical • Tile Work • Masonry • and Much More

**"No job is too small"**

**610-613-0928**

Free Estimates      email: [dkevinfree@aol.com](mailto:dkevinfree@aol.com)      Senior Discounts

Conveniently located in Malvern, PA



**SENIORS HELPING SENIORS**  
 ...a way to give and to receive®

Our loving, caring, compassionate seniors are there to help. We offer all the services you need to stay in your own home, living independently.

[www.heart4helpingseniors.com](http://www.heart4helpingseniors.com)

**Like getting a little help from your friends.®**  
**Call us today! (610) 590-4888**

- Companionship
- Light Housekeeping
- Meal Preparation
- Overnight Stays (24-hour Care)
- Dementia/Alzheimer's Care
- Respite Care
- Personal Grooming and Dressing
- Transportation

©2013 Seniors Helping Seniors. Each office is independently owned and operated. All trademarks are registered trademarks of Corporate Mutual Resources Inc. Not all services are available in all areas.



TRIPS ARE LISTED IN  
CHRONOLOGICAL ORDER

**Pennsylvania Farm Show**

**Friday, January 16, 2015**

**Cost: \$15 + Lunch**

**Departs: 10:30am**

**Contact: Priscilla Burt**

Celebrate agriculture at the 99th PA Farm Show. The Farm Show Complex in Harrisburg will host the largest indoor agricultural exposition in the nation. Exhibits and judging events for the day include cattle and goat dairy, wool, farm equipment, dancing, and culinary. Lunch is on your own at the food court, which features many PA products.

**DuPont Theatre - "In The Mood"**

**Thursday, February 5, 2015**

**Cost: \$59**

**Departs: 12:00pm**

**Contact: Ann McClay**

Hop aboard the "Chattanooga Choo Choo" to "Tuxedo Junction" and get "In the Mood" to hear a "Moonlight Serenade" performed by a 13-piece Big Band and six singer/dancers. *In The Mood* is a tribute to Glenn Miller, Tommy Dorsey, The Andrews Sisters, and big band greats of the 1940s. Complete with period costumes and

The HM Bus Committee is always looking for more volunteers to share ideas and plan trips! If interested, call Marc Fraser at

All bus riders must be age 18 or older!

Trip payment checks should be made payable to "Hershey's Mill HOA".

Bus leaves promptly at the scheduled time. Please plan to arrive 10 minutes early.

choreography, *In The Mood* celebrates America's greatest generation who listened and boogied to up-tempo big band rhythms and danced to intimate ballads. Experience the jazzy, brassy, sentimental and patriotic music of the World War II era.

**West Chester University -  
Traditional Irish Music & Dance**

**Friday, February 27, 2015**

**Cost: \$21**

**Departs: 6:45pm**

**Contact: Connie Cline**

Brian Conway, premier Irish-American fiddler, performs with skill, grace, and force that are steeped in tradition but distinctly his own. Well known in the Irish/Celtic community, he has won numerous all-Ireland fiddling competitions and has been called one of the best fiddlers of his generation.

**West Chester University - President's  
Speaker Series: Jane Pauley**

**Friday, March 6, 2015**

**Cost: \$29**

**Departs: 7:15pm**

**Contact: Ruth Sugar (after 2/1/15)**

Jane Pauley - *Your Life Calling*. A respected broadcast journalist for over 30 years, Jane Pauley's career has spanned morning, primetime, and daytime television, making her one of the most recognizable personalities in America. Call now to reserve your seat, as this trip will fill up quickly!

**West Chester University -  
Popovich Comedy Pet Theater**

**Friday, March 27, 2015**

**Cost: \$21**

**Departs: 6:45pm**

**Contact: Connie Cline**

A world famous blend of the unique comedy and juggling skills of Gregory Popovich and the extraordinary talents of his performing pets. Each of the show's 15 cats and 10 dogs were once strays and rescued from animal shelters. Enjoy an extravaganza of European-style clowns, amazing juggling and balancing acts, and very talented performing pets. We have excellent seats set aside for us.

**West Chester University - Taiko  
Drumming & Japanese Folkloric Dance**

**Tuesday, March 31, 2015**

**Cost: \$17**

**Departs: 6:45pm**

**Contact: Dolores Labowskie**

Nearly 30 drummers and dancers from Tamagawa University in Japan return to WCU for an athletic and graceful performance. This amazing stage show has received rave reviews from the *New York Times* and other media outlets. Join us for an exciting and unique experience!

**Philadelphia Zoo**

**Monday, April 20, 2015**

**Cost: \$29 + Lunch**

**Departs: 10:00am**

**Contact: Priscilla Burt**

Visit America's first zoo, located on a 42-acre Victorian Garden and home to more than 1,300 animals; many rare and endangered. Recent additions include first-of-its-kind animal trail systems, including the Big Cat Crossing, Treetop Trail, and the Great Ape Trail. Lunch is on your own at the Zoo.

*Continued on page 19*





## Get a Taste of Healthy Living at Riddle Village.

When you talk with senior adults about the quality of life at a retirement community, dining is always near the top of the list. Why? Well-prepared, healthy and tastefully presented menu options are part of the joy of living – and part of every day life at Riddle Village.

With a variety of on-site venues, including the newly renovated Garden Terrace, wholesome and delicious menu choices make dining at Riddle Village a healthy, relaxing, and highly enjoyable experience.

See for yourself. **For more information, and a personal tour, please call today: (610) 891-3700**



1048 West Baltimore Pike • Media, PA 19063 • (610) 891-3700 • [www.riddlevillage.org](http://www.riddlevillage.org)

LeadingAge PA



MAG/HMGD/11-14

## HERSHEY'S MILL BUS TRIPS (continued)

### Penn's Peak – "Branson Fever"

**Wednesday, May 6, 2015**

**Cost: \$62**

**Departs: 9:00am**

**Contact: Ann McClay**

Experience family dining at Penn's Peak while enjoying a performance of *Branson Fever*. The show features Dave Rehrig of Twitty Fever, the comedy of Crazy Elmer, and a tribute to Dolly Parton! They'll entertain you with favorites like "It's Only Make Believe", "Hello Darlin", "You've Never Been This Far Before", "I Will Always Love You", "Jolene", "9 to 5", and more. Combine these chart-topping hits with the knee-slappin' comedy of Crazy Elmer, and you've got yourself one sure-fire afternoon of music and fun, Country Style! From this famous mountaintop venue, you will also enjoy a breathtaking overlook of nearby Beltzville Lake, plus a commanding, picturesque 5-mile panoramic view of northeastern Pennsylvania's Appalachian mountains. Lunch and show are included in the price.



### Penn's Peak – "A Tribute To Elvis"

**Tuesday, May 12, 2015**

**Cost: \$66**

**Departs: 9:00am**

**Contact: Ann McClay**

Experience family dining and live entertainment at *Mike Albert & the Big E Band: A Tribute to Elvis*. Mike Albert's "Ultimate Tribute" show has become known worldwide for the respectful portrayal of the late Elvis Presley. Mike won several major world Elvis contests, and demand for his shows resulted in a seven piece Big E Band to emulate the sound Elvis' band had in the Vegas shows and on tour. Mike's powerful voice lends itself well to every type of Elvis' music – 50's, 60's, and 70's rock and roll and love songs, as well as gospel! From this famous mountaintop venue, you will also enjoy a breathtaking overlook of nearby Beltzville Lake, plus a commanding, picturesque 5-mile panoramic view of northeastern Pennsylvania's Appalachian mountains. Lunch and show are included in the price.





**Dr. Theodore G. Mushlin**  
**Dr. Bradford J. Jacobs**  
**Dr. Chad J. Friedman**  
**Dr. Alexandra K. Grulke**  
**Dr. Aabha M. Suchak**

- Offering Professional Medical and Surgical Treatment of the Foot and Ankle.
- Ask about our Diabetic Shoe Program.
- Laser Treatment for Fungus Nails Available.

[PodiatryCareSpecialists.com](http://PodiatryCareSpecialists.com)



## Take a Step in the Right Direction

### WEST CHESTER (2 LOCATIONS)

- 1593 McDaniel Drive
- 795 E. Marshall St., Suite G2  
West Chester, PA 19380  
610-431-0200

### AUDUBON

Seton Center  
 950 Forge Avenue, Suite 200  
 (Trooper Rd. & Forge Ave.)  
 Audubon, PA 19403  
 610-431-0200

### NEWTOWN SQUARE

3319 West Chester Pike  
 at Surrey Drive  
 Newtown Square, PA 19073  
 610-356-5911

### EXTON

Main Line Health Center  
 at Exton Square  
 153 Exton Square Parkway  
 Exton, PA 19341  
 610-431-0200

## HERSHEY'S MILL SERIES TRIPS

### 2014-2015 Philadelphia Orchestra

#### Friday Evening Series

**Cost:** \$14 (Bus Only) + Admission  
**Departs:** 6:00pm  
**Contact:** Ann Seraphin

The enthusiasm for the Philadelphia Orchestra continues, and there are only a few seats available on the bus for the remaining select 2014-2015 season dates:

**February 20, 2015**

**March 20, 2015**

**May 1, 2015**

Call now to reserve your place.

### 2014-2015 West Chester University Travel Adventures Series

#### Tuesday Evening Series

**Cost:** \$8 (Individual Bus Fee) + Admission  
**Departs:** 6:30pm  
**Contact:** Ruth Sugar (after 2/1/15)

This series is a wonderful and inexpensive way to see the world! The WCU Geography Department's remaining 2014-2015 season programs are:

**February 24, 2015 – France Forever**

**March 17, 2015 – The Soul of India**

**March 30, 2015 – Lure and Lore of Deserts**

Participants need to order program tickets on their own. These may also be purchased at the door.



### 2014-2015 DuPont Theatre

#### Wednesday Matinee Series

**Cost:** \$14 (Individual Bus Fee) + Admission  
**Departs:** 12:30pm  
**Contact:** Ruth Sugar (after 2/1/15)

The remaining performances we will be attending this year are:

**April 15, 2015 – Camelot** is the story of King Arthur's kingdom – its passion, pageantry, and betrayal.

**May 13, 2015 – Guys and Dolls** is set in Damon Runyon's mythical New York City. This oddball romantic comedy soars with the spirit of Broadway! Participants need to order program tickets on their own.

### 2014-2015 Walnut Street Theatre Series

#### Thursday & Saturday Matinees

**Cost:** \$40 per show  
**Departs:** 12:30pm  
**Contact:** Ruth Sugar (Thurs. shows) (after 2/1/15)  
**Contact:** Connie Cline (Sat. shows)



We are collecting names for the Wait List, as series subscribers often miss performances due to scheduling conflicts. Dates and shows are as follows:

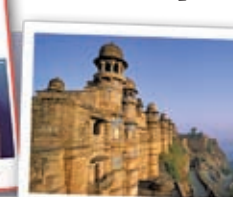
**Thurs. 1/29/15 and Sat. 2/7/15**

Noël Coward's *Private Lives*

**Thurs. 3/26/15 and Sat. 4/4/15**

Agatha Christie's *And Then There Were None*

**Thurs. 5/28/15 and Sat. 6/6/15**  
*Memphis*



# Deck Protect Plus LLC

## 610-202-0724

**Deck cleaning and weatherproofing specialists, as well as professional handyman services – we help maintain and repair your home. A few services we offer: plumbing, painting, flooring, electrical and drywall repair. Check our website for more information.**

[deckprotectplusllc.com](http://deckprotectplusllc.com)



# Franklin Auto Spa

Premium service to help protect the life and look of your car.

Wednesdays are **LADIES DAY!**

**25% off** ANY CAR WASH

**Tuesdays  
SENIOR DAY!  
50% off  
Any Wash**

535 Lancaster Ave.

Frazer, PA 19355

Phone: (610) 296-9000

## Washes:

**Lightning Strike - \$24 (incl. tax)**

Take Flight Wash + - Durashield® U.V. Protectant  
- 72 Hour Guarantee - Lava Wax Polish

**Take Flight - \$20 (incl. tax)**

Turn Key Wash + - Tire Shine  
- Triple Spot Free Rinse - Colorcoat® Triple Foam  
- Durashield® U.V. Protectant

**Turn Key - \$17 (incl. tax)**

Ben's Basic Wash + - Guard Dog® Undercarriage  
- 2 Step Wheel Cleaning

**Ben's Basic - \$14 (incl. tax)**

Exterior Wash + - Interior Vacuuming  
- Dash Wiped Clean - Windows Cleaned  
- 1 Step Wheel Cleaning

**Exterior Wash - \$9 (incl. Tax)**

- Exterior Wash - Towel Dry



[www.franklinautospa.com](http://www.franklinautospa.com)



**DEB DORSEY**

610-724-2880

[deb@deb-dorsey.com](mailto:deb@deb-dorsey.com)

**JEAN BELL**

610-213-5337

[jean.bell@foxroach.com](mailto:jean.bell@foxroach.com)

**DAVE DORSEY**

610-724-2879

[dave@deb-dorsey.com](mailto:dave@deb-dorsey.com)

## Jean Bell and The Dorsey Team Real Estate Professionals and your Neighbors in Hershey's Mill

As residents of Hershey's Mill and dedicated Real Estate professionals serving the surrounding communities, our combined real estate knowledge, professionalism and expertise will serve you well.

We are always available for any of your real estate needs both in Hershey's Mill and elsewhere.

[www.debdorsey.com](http://www.debdorsey.com)



**BERKSHIRE HATHAWAY  
HomeServices**

**Fox & Roach, REALTORS®**

Area's #1 Real Estate Company • Rosemont Station Office • 610-527-6400

© 2013 BHH Affiliates, LLC. An independently operated subsidiary of HomeServices of America, Inc., a Berkshire Hathaway affiliate, and a franchisee of BHH Affiliates, LLC. Berkshire Hathaway HomeServices and the Berkshire Hathaway HomeServices symbol are registered service marks of HomeServices of America, Inc.® Equal Housing Opportunity. Information not verified or guaranteed. If your home is currently listed with a Broker, this is not intended as a solicitation.

**Paoli Rug Co.**  
Since 1956



Rug Cleaning & Repair on Premises

**610-644-7250**

- Free Pickup & Delivery
- Best Selection of Wall to Wall and Oriental Rugs



[www.paolirug.com](http://www.paolirug.com)

Glittering decorations and the smell of home-baked goodies welcomed all to Sullivan House on December 7th. The lovely afternoon brought out so many who love this historic Hershey's Mill structure, and it was a chance to converse with longtime friends and to make new ones. Whether you came for the camaraderie, the history, the treats, or the wonderful Model Railroaders display, it was a day to celebrate along with the dedicated Sullivan House Committee.

*At right, from left:*  
Jean Simpson and Sylvia Krangel



Sullivan House Committee  
*Above, from left:*  
Jack & Gay Barry,  
Elaine Becker  
*At left, from left:*  
Ann Shank, Bobbe  
Schackel, June  
Graeff, Jean  
Simpson and  
Bobbie McCarthy



*At left, from left:* Judy Kidd,  
Suzanne Spitzer and Joya Angelo



Gay Barry | Quaker

The Blue Pear Bistro, which once was a general store, is located in the tiny village of Dilworthtown. Established in the mid-1700s, the village consisted of a blacksmith shop and the Dilworthtown country store. It was built in 1754, and once was one of the oldest operating country stores in America. The founder of the village, James Dilworth, ran a blacksmith shop. He also built a country store across the road, “where he sold a number of essentials,” according to documents and diaries.

In 1758, Mr. Dilworth built quite a distinguished home of brick for his family of 11 children (parts of which are now the Dilworthtown Inn); located on the same side as the store. Following Mr. Dilworth’s death in 1769, his son applied for a tavern license. Its rich and colorful past is sprinkled with tales from the Revolutionary War. According to legend, in 1777, the first American flag ever carried into battle allegedly flew from the tavern before it was taken into the September 11 Battle of the Brandywine. The victorious British troops rampaged and looted the Dilworthtown buildings. Supposedly, a British soldier was buried in the basement in 1777.

The Blue Pear Bistro is among a trio of Dilworthtown restaurants on the property – the Dilworthtown Inn, The Innkeepers Kitchen and the Blue Pear, all

under the ownership of Jim Barnes and Robert Raffeto. Chef David Fogelman of the Blue Pear said, “When you go into the basement and see the foundation you can actually feel the history.”

Chef Fogelman has designed a small and medium plates menu that features fresh locally grown products and organic produce; some from his farm. His dishes combine French and southern American comfort cuisine.

“My heritage is



Pennsylvania Dutch and Cornish,” says Fogelman, “so I like to add things to the menu [such as] saffron cakes that my family always made.”

For example his grilled cheese sandwich filled with extra-sharp cheddar, fresh mozzarella, green apple, Parmigiano-Reggiano and tomato confit with a side of tomato basil bisque (a small plate, but not really) suited my comfort thermometer just beautifully. Other small plates include oysters on the half shell; Atlantic wild tuna with avocado, spicy soy vinaigrette and baby greens; Blue Pear flatbreads – mozzarella, tomato confit, pepperoncini and basil or braised beef short ribs, caramelized onions, blue cheese crema and *Bordelaise*. For those whose favorite is Ital-

ian food, prosciutto and mascarpone is also on the fare. There is classic French Onion Soup; crispy calamari with Thai chili sauce, honey glaze, watercress salad and basil.

Before starting on your entrée, you may like to indulge in shared snacks which are offered; such as white truffle popcorn (Yes, I said popcorn – goes well with beer on tap!); Edamame; assorted olives; home-made sea salt rosemary chips; or deviled eggs (which Jack and I shared). Fussy, I am, about deviled eggs – these were outstanding.

with sauce *Bordelaise*; Free Bird Farms chicken breast; and fettuccine.

You may be wondering about the name. The Blue Pear Bistro’s name was inspired by the history of the Dilworth farm. The Chester County Historical Society’s register states the first pear tree in the region was planted behind the Dilworthtown General Store. Known for its vibrant fruit, this pear tree seeded orchards throughout the Brandywine Valley. In addition, the base of the tree was adorned with broken cobalt blue glass – thus the name

## Blue Pear Bistro

275 Brintons Bridge Road, West Chester  
(610) 399-9812

The small plates may be just right for your appetite; but if not quite, side dishes may be shared. Available are house-made fries, mixed green salad, grilled asparagus, cheddar grits, and Brussel sprouts.

For those who have a heartier appetite, the medium plates may be for you; such as a USDA Prime cheeseburger or an Argentinean-style cheeseburger, both served with fries. For seafood lovers, six dishes are available for your choosing: pan-seared Barnegat Light sea scallops; North Atlantic salmon with pistou, potato and grilled vegetable hash; Atlantic halibut; Prince Edward Island Mussels in a fennel-saffron light cream broth (which is a favorite); and a curried crab cake with avocado raita and tomato-cumin lentils.

Other selections are: braised beef short ribs (enjoyed by Jack); steak and frites

“Blue Pear” was born. The broken blue glass surrounding a tree was a tradition at that time, hoping to bring tranquility among other characteristics.

While the exterior remains a rustic 18th century, the interior is more modern with iridescent hues of gold and amber. But the two original fireplaces are there and work. I found it to be cozy. In good weather, dining on the front porch is an option. Several months to go for this option, but then, it is something of which to look forward.

Hours are Monday through Saturday from 4pm to midnight. Dinner is from 5pm to 10pm. Reservations are suggested. Located off of Route 202 South next to the Dilworthtown Inn.

The owners hope that the Blue Pear will last another 250 years and will offer passersby respite and relaxation. That is my wish for you, also, for the new year.

UPCOMING EVENTS

*Donna Spoto | Ulster*

All our best wishes for a wonderful 2015. The library will begin the year starting with our annual Book Sale Kick Off – details to come. The 2015 Book Sale is scheduled for September 12 and 13. We are now accepting donations of books.

Our annual campaign to become a Friend of the Library is in full swing. For a yearly donation of \$5 or more you can become a Friend and attend our

*That perfect tranquillity of life, which is nowhere to be found but in retreat, a faithful friend and a good library.*  
– Aphra Behn

Community Center Library Hours

Monday to Friday 10am-2pm

Saturday 10am-Noon

www.hmlibrary.com

book sale preview on Friday evening September 11. A library book bag will be given to early participants.

HOURS AND INCLEMENT WEATHER

*Donna Spoto | Ulster*

Library volunteers are at the desk six days a week (hours in box above). During inclement weather, if the volunteer feels that it is unsafe they may close the library; we appreciate your understanding. The safety of all is our concern.

NEW LIBRARY BOOKS

*Peggy McReynolds | Yardley Librarian*

*Alphabetical by Author*

Baldacci, David – *Escape*

Binchy, Maeve – *Maeve's Times*

Cameron, W. Bruce – *Midnight Plan of the Repo Man*

Child, Lee – *Personal*

Cussler, Clive – *Havana Storm*

Dibenedetto, David – *Good Dog*

Downy, Kirstin – *Isabella*

Duncan, Barrett – *GI Brides*

Evanovich, Janet – *Job*

Finch, Charles – *Laws of Murder*

Ford, Richard – *Let Me Be Frank With You*

Francis, Felix – *Refusal*

Francis, Felix – *Dick Francis's Damage*

French, Tana – *Secret Place*

Gawande, Atul – *Being Mortal*

Grisham, John – *Gray Mountain*

Hartman, Caroline – *Sacred Ponies*

Herken, Gregg – *Georgetown Set*

*The only thing that you absolutely have to know, is the location of the library.* – Albert Einstein

James, Peter – *Want You Dead*

Johnson, Craig – *Wait for Signs*

Keret, Etgar – *Tel Aviv Noir*

King, Stephen – *Revival*

Leaming, Barbara – *Jacqueline Bouvier Kennedy Onassis*

Lepore, Jill – *Secret History of Wonder Woman*

Lovett, Charlie – *First Impressions*

MacManus, James – *Sleep in Peace Tonight*

Mayor, Archer – *Proof Positive*

McCaig, Donald – *Ruth's Journey*

McCall Smith, Alexander – *Handsome Man's Deluxe Café*

Moriarty, Liane – *Big Little Lies*

Moyes, Jojo – *Ship of Brides*

Neville, Stuart – *Final Silence*

Nicholls, David – *Us*

Rendell, Ruth – *Girl Next Door*

Roberts, Nora – *Blood Magick*

Robertson, Imagen – *Paris Winter*

Robinson, Marilynne – *Lila*

Roorbach, Bill – *Remedy for Love*

Sandford, John – *Deadline*

Shields, Brooke – *There Was a Little Girl*

Smith, Tom Rob – *Agent 6*

Steel, Danielle – *Pegasus*

**Knots & Weaves**  
DECORATIVE RUGS

FREE PICKUP and DELIVERY  
for VIP Hershey's Mill Residents

"My experience at Knots and Weaves was good to me! A comfortable environment with a very helpful and thoughtful professional team and an aesthetic inventory."  
*Rosemary S., West Chester, PA - Hershey's Mill*

BUY · SELL · TRADE · CLEAN · RESTORE  
Continued Top Notch Service to our loyal Hershey's Mill Clients!

218 East King Street | Malvern, PA | 610-644-9192  
www.knotsandweaves.com

Follow us  
f t p in

BUCKLEY, BRION, MCGUIRE & MORRIS LLP  
IS PROUD TO HAVE SERVED  
HERSHEY'S MILL SINCE 1983

**B**

BUCKLEY BRION  
MCGUIRE & MORRIS LLP

~ Wills & Trusts ~  
~ Estate Administration & Real Estate ~  
~ Personal Injury, Medical Malpractice ~  
~ Accident Cases ~  
~ Miscellaneous Legal Matters ~

FOR INFORMATION CALL ANTHONY MORRIS  
PHONE: (610)436-4400, EXT. 103 OR  
EMAIL: AMORRIS@BUCKLEYLLP.COM  
118 W. MARKET STREET, SUITE 300  
WEST CHESTER, PA 19382-2928

*John S. Price*  
**JEWELER INC.**

- Custom Jewelry Design
- Re-mounting
- Repairs performed on-premises
- Appraisals

*10% off all new purchases to residents of Hershey's Mill*

**FRAZER SHOPPING CENTER**  
 BUSINESS RT. 30 • FRAZER, PA 19355  
 610-647-6168

 **MacLaren**  
 Kitchen and Bath



*Countertop Replacements In One Day!*

**Visit our Showroom For:**  
 Granite, Corian, and Quartz  
 Cabinet Design and Sales  
 Tile Backsplashes  
 Sinks and Faucets

**We're Just Around the Corner**  
 Monday- Friday 8am- 4:30pm  
 Saturday 10am-2pm

**610-436-5436**  
 www.maclarenfab.com  
 1135 Phoenixville Pike West Chester, PA

**Call Today For A 5% Discount For Hershey's Mill!**



**Complete Landscaping Packages**

- Professional Consultation
- Scale Drawings & Design
- Complete Necessary Forms
- Installation & Warranty

**610-692-2649**  
 hmland@comcast.net





**Michael C. Neale, P.C.H.**  
**Connie L. Friedrich, P.C.H.**

**Now Open**

**Toninos**  
 PIZZA & PASTA CO.

**10% DISCOUNT ON ENTREES FOR HERSHEY MILL RESIDENTS**



*Come enjoy our homemade pastas, pizzas, and signature Italian dishes*

235 Lancaster Ave • Frazer PA • **610.240.9566** • www.toninospizzaandpasta.com

**Trusted & Affordable Dental Excellence**

**20% Senior Discount!**  
*Call us today for more details.*  
This offer is not to be combined with any other discount.



 480 Lancaster Avenue  
 • Frazer •  
 (610) 993-0444  
 www.FrazerDentalCare.com



**OLIVER**  
*Comfort You Can Trust*

**Oliver Provides Fast, Reliable, Expert Service! If It Breaks, We Fix It.**

**For Superior Service and Comfort You Can Trust, call Oliver today!**

- Heating
- Cooling
- Plumbing
- Electrical

**610-616-5691**  
**OliverHeatCool.com**



Monday	Tuesday	Wednesday	Thursday	Friday	Saturday	Sunday
<p><i>I wonder if the snow loves the trees and fields, that it kisses them so gently? And then it covers them up snug, you know, with a white quilt; and perhaps it says "Go to sleep, darlings, till the summer comes again." – Lewis Carroll</i></p>			<b>1</b> New Year's Day (Most Activities Cdd) 10:00am Alzheimer/Dementia Support Group 10:00am Yoga 12:30pm Billiards 1:00pm Knitting Circle 2:00pm Card Games 6:30pm Poker 7:00pm Stress Management Class	<b>2</b> 8:30am Aerobic Dancing/Exercise 9:00am HMGC Bridge 10:00am Quilters 10:00am Ageless Exercise (Cdd) 12:30pm Billiards 1:00pm Pickleball Mah Jongg	<b>3</b>	<b>4</b>
<b>5</b> 8:30am Aerobic Dancing/Exercise 10:00am Ageless Exercise 12:30pm Mah Jongg 12:30pm WH Duplicate Bridge 3:00pm Bridge 7:00pm WH Duplicate Bridge	<b>6</b> 12:30pm HMGC Bridge 1:00pm Pinochle 1:00pm Mah Jongg 1:30pm Mah Jongg 3:00pm (SH) Railroad Club	<b>7</b> 7:30am Men's Bible Study 8:30am Aerobic Dancing/Exercise 9:30am Intermediate Bridge Lesson 10:00am Ageless Exercise 12:00pm Art Group 12:30pm Social Club Bridge 12:30pm Billiards 1:00pm Dominoes 7:00pm Casual Singing Group 7:30pm Mah Jongg	<b>8</b> 10:00am Yoga 11:30am Mermaid Book Club 12:30pm Billiards 1:00pm Knitting Circle 2:00pm Card Games 6:30pm Poker 7:00pm Stress Management Class	<b>9</b> 8:30am Aerobic Dancing/Exercise 9:00am HMGC Bridge 10:00am Quilters 10:00am Ageless Exercise 12:30pm Billiards 1:00pm Pickleball Mah Jongg 2:00pm Rummikub	<b>10</b>	<b>11</b>
<b>12</b> 8:30am Aerobic Dancing/Exercise 10:00am Ageless Exercise 12:30pm Mah Jongg 12:30pm WH Duplicate Bridge 3:00pm Bridge 7:00pm WH Duplicate Bridge	<b>13</b> 10:30am Hearing Screening 12:30pm HMGC Bridge 1:00pm Pinochle 1:00pm Mah Jongg 1:30pm Mah Jongg 3:00pm (SH) Railroad Club 6:30pm Open Bunco 7:00pm PC Computer Club	<b>14</b> 7:30am Men's Bible Study 8:30am Aerobic Dancing/Exercise 10:00am Ageless Exercise 12:00pm Art Group 12:30pm Billiards 1:00pm Dominoes 7:30pm Mah Jongg	<b>15</b> 10:00am Yoga 12:30pm Billiards 1:00pm Knitting Circle 2:00pm Card Games 6:30pm Poker 7:00pm Stress Management Class	<b>16</b> 8:30am Aerobic Dancing/Exercise 9:00am HMGC Bridge 10:00am Quilters 10:00am Ageless Exercise 12:30pm Billiards 1:00pm Pickleball Mah Jongg	<b>17</b>	<b>18</b>
<b>19</b> 8:30am Aerobic Dancing/Exercise 10:00am Ageless Exercise 12:30pm Mah Jongg 12:30pm WH Duplicate Bridge 3:00pm Bridge 7:00pm WH Duplicate Bridge	<b>20</b> 12:30pm HMGC Bridge 1:00pm Pinochle 1:00pm Mah Jongg 1:30pm Mah Jongg 3:00pm (SH) Railroad Club 7:00pm Investment Club	<b>21</b> 7:30am Men's Bible Study 8:30am Aerobic Dancing/Exercise 9:30am Intermediate Bridge Lesson 10:00am Ageless Exercise 12:00pm Art Group 12:00pm Social Club Bridge 12:30pm Billiards 1:00pm Dominoes 7:30pm Mah Jongg	<b>22</b> 10:00am Yoga 12:30pm Billiards 1:00pm Knitting Circle 2:00pm Card Games 6:30pm Poker 7:00pm Stress Management Class	<b>23</b> 8:30am Aerobic Dancing/Exercise 9:00am HMGC Bridge 10:00am Quilters 10:00am Ageless Exercise 12:30pm Billiards 1:00pm Pickleball Mah Jongg 2:00pm Rummikub	<b>24</b> 10:00am Mac Computer Group	<b>25</b>
<b>26</b> 8:30am Aerobic Dancing/Exercise 10:00am Ageless Exercise 12:30pm Mah Jongg 12:30pm WH Duplicate Bridge 3:00pm Bridge 7:00pm WH Duplicate Bridge	<b>27</b> 12:30pm HMGC Bridge 1:00pm Pinochle 1:00pm Mah Jongg 1:30pm Mah Jongg 3:00pm (SH) Railroad Club	<b>28</b> 7:30am Men's Bible Study 8:30am Aerobic Dancing/Exercise 10:00am Ageless Exercise 12:00pm Art Group 12:30pm Billiards 1:00pm Dominoes 7:30pm Mah Jongg	<b>29</b> 10:00am Yoga 12:30pm Billiards 1:00pm Knitting Circle 2:00pm Card Games 6:30pm Poker 7:00pm Stress Management Class	<b>30</b> 8:30am Aerobic Dancing/Exercise 9:00am HMGC Bridge 10:00am Quilters 10:00am Ageless Exercise 12:30pm Billiards 1:00pm Pickleball Mah Jongg 3:00pm Bingo	<b>31</b>	SH is Sullivan House. Cdd is Cancelled. Dates and times subject to change. Contact program leader for details.

## January 2015 Activities Calendar

# SURREY

Services for Seniors

The Leader in Senior Care

Home Health Care

In-Home Services

Health & Wellness Programs

Housekeeping

Transportation

A non profit organization serving the community for 33 years.



610-647-9840 • www.surreyservices.org

## One call handles it all

PLUMBING | HEATING | COOLING  
ELECTRICAL | WATER CONDITIONING  
AUDIO/VISUAL & AUTOMATION



Hallerent.com

888.625.1500

CONTRACTORS OF THE YEAR



PA1867

## Quality care you deserve, close to home.

When it comes to your family's health, you can trust the care of Paoli Hospital. We've grown from a seven-room facility to the County's only trauma center, investing in new facilities and technology and expanding our services and staff to meet your needs.

Our dedication to patient safety and excellence has been recognized by some of the nation's leading health care standards-setting organizations. We're proud to be the only hospital in the County with accreditations in *all* of the following:

Breast Cancer Care • Chest Pain • COPD • Hip and Knee Replacement  
Sleep Disorders • Stroke • Trauma

With many of our physicians and services available at the Main Line Health Centers in Collegeville and at the Exton Square Mall, quality care has never been more convenient.

1.866.CALL.MLH  
mainlinehealth.org/paoli



Paoli Hospital  
Main Line Health®

Well ahead.®



Membership on the medical staff of a Main Line Health hospital does not constitute an employment or agency relationship.

HMC-TV MAGAZINE NOW ONLINE

Don Trauger | Kennett

Hershey's Mill Community-TV is pleased to announce that the monthly *Guide and Digest* is now available online as a PDF file. The online version is in addition to the printed copy you will continue to receive by mail.

To see current and past editions online, visit [www.hersheysmill.org](http://www.hersheysmill.org) with your web browser, and select "Guide & Digest" from the "HMC-TV20" tab. The current edition will be available online shortly after the printed version is delivered to residences by the US Postal Service. The *Guide and Digest* online began with the October 2014 edition.

The security of residents in our community is important to us all; and increasingly a matter of concern. Therefore, the online version of the *Guide and Digest* has all resident contact infor-

mation removed. This information will continue to be available in the hard-copy version provided exclusively to the Hershey's Mill community.

Hershey's Mill Community-TV is proud to publish the *Guide and Digest*, which has provided an important voice for the entire Hershey's Mill community for 16 years. We thank all of the volunteers and contributors throughout the community whose support makes this publication uniquely ours.



We hope that the online edition will improve access by our residents to this publication as they travel throughout the year, and to provide a handy archive for all.

CITIZENS POLICE ACADEMY

Sheila Kanter | Robynwood

The Westtown-East Goshen Regional Police Department offers a most interesting and enlightening Citizens Police Academy for our residents. This is a revolutionary concept in law enforcement and community policing. They have designed a program that will enable us to have a better understanding of the operations of the Police Department and its officers. Participants attend one night per week, for two hours, for a period of 12 weeks.

On a personal note, I am completing this course for the second

time. I continue to be so impressed by the police force we have! One highlight was meeting Chester the robot. This is the only police robot on the entire east coast!

Topics include Police Patrol, Criminal Investigations, CPR and First Aid, The Court System, 911 Operations Center, Terrorism Awareness, Traffic Enforcement/Accident Investigation, and Reconstruction.

For more information or to sign up, contact Lieutenant William Cahill of the Westtown-

East Goshen Regional Police Department at 610-692-9600 x216 or [bcahill@westtown-police.org](mailto:bcahill@westtown-police.org). The nominal \$27 fee covers the costs associated with the CPR/First Aid certification. I highly recommend this course, and it's fun while learning. You'll be amazed at what goes on in order to provide us with a very safe place to live.



Continued on page 39



Sheila Kanter and classmates after completing the Citizens Police Academy.



HERSHEY'S MILL SINGERS' HOLIDAY CONCERT

On December 7th, the joyful voices of the HM Singers filled a church just outside the Mill. It was a beautiful afternoon and light streamed through the stained glass windows while friends and neighbors sang holiday favorites. Various groupings performed – and the large crowd joined in as well to fill the hall with song.



610-692-7776

300 West Boot Road  
West Chester, PA 19380

Insurance Claims  
Autobody Repair  
Collision Services  
Paintless Dent Removal  
[www.3DBodyworks.com](http://www.3DBodyworks.com)



**FREE GAS FILL UP** with any repair over \$1,000.

Exclusively for Hershey Mill residents. Please present this ad to redeem. Offer expires 12/31/14.

**COMMUNITY NEWS (continued)**

**BOCCE TOURNAMENT AND INFORMATION**

*Bob Crowther | Princeton*

This year's Bocce tournament had 57 teams competing for the coveted Bocce Bowl. Making the playoffs were:

**Group One** - Jack & Julie Keeley; Bobbe Schackel & Arlene Seeger.

**Group Two** - Jon Ford & Bill Elder; Rex & Joyce Cassel.

**Group Three** - Lois Buffington & Carolyn Pizzuto; Ed & Marian Sweeney.

**Group Four** - Tom Day & Ed Holcroft; Bill Henderson & Joe Milani.

Congratulations to each team and to all those that competed. There are really no losers in Bocce. For the second



year in a row Group Two was the overall winner and they were undefeated both years; quite an accomplishment.

To give the rest of Hershey's Mill a chance we will have two tournaments next year. Starting May 1st and ending June 30th, we will have a mixed only tournament - man and woman on the same team. We will go back to eight groups with one winner from each group. From July 1st to Labor Day, we will have a Men's only and Women's only tournament - two men on a team and two women on a team. We'll do eight groups as well with one winner from each group. Sign up early so you don't miss out.

If you have a team and want to sign up for one or both tournaments, let me know at



**For the Lifestyle You Deserve...**

- Resort-style living in a retirement community with a continuum of care available
- Superior accommodations & amenities - Parking garage included
- Wide selection of independent apartments with balcony or patio and personal care suites. Private rooms for skilled nursing & rehab which was awarded a FIVE-STAR RATING!
- Owner managed, locally owned
- No Entrance Fee or Community Fee

For more information call 484-653-1200  
[www.wellingtonretirement.com](http://www.wellingtonretirement.com)



1361 Boot Road (Boot Road & Carriage Drive) • East Goshen • West Chester, PA 19380



**ORIENTAL PEARL RESTAURANT**

*Sushi and Pan Asian Cuisine & BYOB!*



SASHIMI DELUXE



MANGO CHICKEN & SHRIMP



PINEAPPLE CHICKEN & SHRIMP



OP SHRIMP & SCALLOPS

**10% Off for H. Mill Residents**

**Goshen Village Shopping Center**  
**1550 Paoli Pike • West Chester (Across from CVS)**

**610-692-5888** **OrientalPearlwc.com**

<b>Original Programming</b>	<b>January 1-15, 2015</b>			
<b>Honoring the 97th Regiment - Part 1</b> Last October State Senator Andy Dinniman presided at a ceremony in West Chester commemorating this Volunteer Regiment from Chester County which had five Medal of Honor recipients during the Civil War.	10:00 am	4:00 pm	7:00 pm	12 am
<b>Honoring the 97th Regiment - Part 2</b> Conclusion, and detail on efforts to preserve the Medal of Honor Grove at Valley Forge.	10:15 am	4:15 pm	7:15 pm	12:15 am
<b>Toe Disorders and Midfoot Arthritis - Part 1</b> <i>With Dr. Jim McCabe</i> Dr. Greg Kirwan is an orthopedic surgeon with the Chester County Ortho Group. He specializes in foot and ankle surgery. The doctors discuss treatment and correction of disorders of the toes and midfoot.	10:30 am	4:30 pm	7:30 pm	12:30 am
<b>Toe Disorders and Midfoot Arthritis - Part 2</b> <i>With Dr. Jim McCabe</i> More on dealing with these disorders.	10:45 am	4:45 pm	7:45 pm	12:45 am

<b>Movies</b> Noon and 8:30pm	<b>January 1-8</b> <b>Impromptu (PG-13)</b> <i>Judy Davis and Hugh Grant</i> Based on a true story. Composer Frederic Chopin is pursued by French novelist George Sand. [Run time 1h47m]
	<b>January 9-15</b> <b>Mrs. Brown (PG)</b> <i>Judi Dench and Billy Connolly</i> Queen Victoria becomes the subject of scandalous rumors. Based on true events. [Run time 1h45m]

<b>Bulletin Board</b>	1:00am-10:00am	11:00am-Noon	Following the movie until 4:00pm
	5:00pm-7:00pm	8:00pm-8:30pm	Following the movie until Midnight

HMC-TV Channel 20 reserves the right to make program substitutions, and all dates and times are subject to change. The expressed opinions of reporters, guests, or advertisements in this publication or in any Channel 20 telecast shall not be construed as an endorsement by HMC-TV Channel 20. ©2015 HMC-TV

<b>Original Programming</b>	<b>January 16-31, 2015</b>			
<b>Senior Scams - Part 1</b> <i>With Lee McCarthy</i> Senior Officer Steve Wassell of the West-town-East Goshen Regional Police Department has compiled disturbing information on the scams aimed at seniors.	10:00 am	4:00 pm	7:00 pm	12 am
<b>Senior Scams - Part 2</b> <i>With Lee McCarthy</i> Officer Wassell details the specifics of so-called "Granny Scams," which are common and been aimed at residents of the Mill. Also includes telemarketing fraud.	10:15 am	4:15 pm	7:15 pm	12:15 am
<b>Senior Scams - Part 3</b> <i>With Lee McCarthy</i> Prizes, sweepstakes and lotteries. If it's too good to be true it usually is. Magazine sale scams. Nigerian money offers.	10:30 am	4:30 pm	7:30 pm	12:30 am
<b>Senior Scams - Part 4</b> <i>With Lee McCarthy</i> Conclusion of the presentation that provides important contact information if you think you have been scammed.	10:45 am	4:45 pm	7:45 pm	12:45 am

<b>Movies</b> Noon and 8:30pm	<b>January 16-23</b> <b>African Queen (PG)</b> <i>Humphrey Bogart and Robert Morley</i> A grizzled skipper and a spirited missionary take on the Germans during World War I. [Run time 1h44m]
	<b>January 24-31</b> <b>City Slickers II (PG)</b> <i>Billy Crystal and Daniel Stern</i> The gang that couldn't ride straight hit the trail again. [Run time 1h55m]

**To view Channel 20's Original Programming on your computer:**

Go to [www.hersheysmill.org](http://www.hersheysmill.org), choose "Original Programming" from the "HMC-TV20" tab, then click "TV Original Programming".

**To view or print the HM TV channels listing:**

Choose "Cable TV Line-up". A listing is available for both the basic channel lineup as well as the complete Comcast channel lineup.

## Marlene is making a difference...

For Listing or Buying Real Estate call

**Marlene Gulczynski, GRI, CRS, SRES, CSP**

Life Gold PAR Excellence  
Seniors Real Estate Specialist

Call a **NEIGHBOR**

surrounded by her successes.



**RE/MAX** Main Line

Office: 610-640-9300

Direct Line: 610-701-9966

E-mail: [Marlene@SoldbyMarleneG.com](mailto:Marlene@SoldbyMarleneG.com)

Zagat Guide 2013

"Old World Charm..  
Top Notch Service"



**General Warren Inne**

American Cuisine  
Private Party Rooms  
Live Music in Tavern  
Elegant Guest Suites

9 Old Lancaster Rd Malvern, PA  
610-296-3637  
[www.generalwarren.com](http://www.generalwarren.com)

**15% Food Discount at Lunch**  
for all Hershey's Mill residents  
11:30am - 2:30pm Mon - Fri

We Specialize in Making  
Our Customers Happy!

**CORDES**  
**CONTRACTING**

40 Years of Experience & Craftsmanship

Proud  
10 Year  
Resident!

• An Expert in  
Paint, Drywall  
& Carpentry

• No Job Too Small or Too Large

• Proud to be the Contractor  
of Choice at Applebrook  
Golf Club

**Tim Cordes**  
**610-209-7268**

## CLASSIFIEDS

Ad deadline is the 22nd and will run the following two months at no cost. Limit description to 30 words per item, and include pricing and contact information.

Email submission to [hmctvguide@comcast.net](mailto:hmctvguide@comcast.net), attention Louise O'Brien, or place printed/typed copy in the Channel 20 mailbox outside the building. All ads are subject to review and editing. You must be a HM resident to advertise.

**FOR SALE** Henredon **entertainment center**. Holds 40" flat screen TV with storage for DVR, DVD tapes, disks and games. Blond oak, 6' tall. Perfect gathering place for electronic debris. \$200. Call

**FOR SALE** Beautiful **beveled glass mirror** 30" x 44". Great condition. \$25. Call

**FOR SALE** Four year old Waterloo Gardens **outdoor dining set** consisting of a 60" round table and four chairs. Rubber Maid **storage chest**. Four **outdoor chairs**. Call  
or

**FOR SALE** Small blue velvet **swivel rocking chair** for living room or bedroom. Excellent condition. \$50. Call

**FOR SALE** Solid walnut **Kawai Baby Grand piano** in very good condition. Tuned every 6 months. \$6,000 (Blue Book value is \$11,500). Ethan Allen full size **sleeping sofa** in good condition, two **side tables**, small **teak bookcase**, one **floor lamp**. Best offer. Call

**FOR SALE** Round **oak table**, 3'6.5" wide, two 12" **leaves**, four **chairs**. Excellent condition with perfect top. \$300. Rarely used **pine table** 3'8" x 2'2" with two **ladder-back chairs** with rush seats. \$100 or best offer. Call

**FOR SALE** Two **Drury rugs**, one 8' x 10' and one 6' x 9'. Off white back-



ground with muted color flowers. \$75 each or best offer. Call

**FOR SALE** Nordic Track GX4.0 **Recumbent Exercise Bike** with electronic console; complete with owner's manual. \$100. Foldable Ironman model 5402 **Inversion table** with adjustable foot clamps and back brace; with owner's manual; less than 2 years old and hardly used. \$85. Both are a great buy as we are moving. Call

**FOR SALE** Eight 4-piece place settings **Oxford Bone China**, Bryn Mawr pattern. \$1200. **Waterford Traymore**, 10 goblets, 2 champagnes, 8 wines, 8 desserts. \$900. **Chaise-lounge couch**, Pennsylvania House, maroon/beige plaid. \$450. Single **hide-a-bed**, floral print. \$400. All items in excellent condition. Call

**WANTED** Musicians to form a classic rock band: bass guitar, rhythm guitar, keyboard, lead guitar. For more information, call Mark at

**FREE** All-weather wicker loveseat with cushions. Call or

**Joe Murphy | Glenwood**

For seniors concerned with losing their preferred doctors, the Medicare HMO/PPO disenrollment period (Medicare Advantage Disenrollment Program (MADP)) starts January 1, 2015.

Since the U.S. government documented its goal to eliminate the 15% reimbursement subsidy to the various Medicare HMO/PPO carriers, there has been unrest in “river city” and at Hershey’s Mill.

The U.S. government now insists that all Medicare-related offerings are on a reimbursement footing, equal to the government-defined and controlled Medicare products. As a result, the value of HMO/PPO Medicare products will be continuously diminished, while the value of original government products, such as Part A (Inpatient Care), Part B (Outpatient Care), Part D (Prescription Drug Plan), and Medicare Supplement Plans will be continuously increased.

To combat this on-going elimination of the 15% subsidy reimbursement to the Medicare HMO/PPO plans (known as the Medicare Advantage Plans), most of these plans are immediately reducing their operating costs. These

cost-cutting actions are dramatically reducing the quality of care for HMO/PPO members and are simultaneously introducing much higher out-of-pocket costs in deductibles and co-pays.

The most dramatic cost-cutting action taken by a financially challenged HMO/PPO plan is to “narrow” its list of available local in-network doctors, hospitals and medical facilities (for lab, imaging, outpatient surgery, etc.).



In this particular cost-cutting action, a greatly reduced number of (often less practiced) doctors, hospitals and facilities are being contracted by the financially challenged HMO/PPO carrier to accommodate an ever increasing number of members.

With 10,000 seniors entering our Medicare ranks every day, the likely result

will be longer wait times and less favorable medical outcomes for HMO/PPO members.

For many 2015 HMO/PPO members, one of two unfortunate things may occur: Your preferred doctor, hospital and medical facility may be involuntarily eliminated from the HMO/PPO plan’s local network for 2015, or it may voluntarily exit the HMO/PPO plan’s local network for 2015.



nal Medicare (A & B) in combination with a Medicare Supplement Plan.

In returning to original Medicare as your primary coverage, you can expect to find your preferred doctor, hospital and medical facility available for your continued use. Your current HMO/PPO plan *must accept* your disenrollment request so you can return to

# Medicare Advantage Disenrollment Program

**The MADP Remedy:**

Knowing that this HMO/PPO degradation in quality of care and escalation of out-of-pocket expenses was coming, the federal government instituted the Medicare Advantage Disenrollment Program (MADP).

*Commencing on 1/1/15 and running through 2/14/15, the MADP allows an individual unhappy with his/her Medicare Advantage HMO/PPO Plan to disenroll from his/her HMO/PPO Medicare Plan and return to the much higher value medical coverage of origi-*

Medicare Part A and Part B as your primary coverage.

An HMO/PPO disenrollment request made in January will be effective February 1, and a request made in February will be effective March 1. During this same HMO/PPO disenrollment period, the individual can enroll in a Medicare Part D prescription drug plan (PDP) to compliment the greater value coverage of original Medicare A & B plus a Medicare Supplement Plan.

Don’t delay! Don’t let the HMO/PPO’s \$0/month premium mislead.

**ShelfGenie**  
EVERYTHING WITHIN REACH™

**Transform Your Kitchen Without Replacing Your Cabinets**

Easier Access • Better Organization • More Storage

**FREE IN-HOME DESIGN CONSULTATION**

Karen J. McKinney, Designer  
610.331.0006 | kmckinn001@aol.com | shelfgenie.com



Special Offer for Residents of Hershey’s Mill!

**50% OFF LABOR**

with purchase of 5 or more Glide-Out shelves.

Limit one offer per household. \*Valid on Glide-Out purchase with offer. Cannot be combined with other offers.

**SarahCare**  
DAYTIME SENIOR CARE & ACTIVITIES  
610-251-0801

**LOOKING FOR affordable day care FOR A LOVED ONE?**

**For the cost of 3 hours of home care, you can receive 6 hours of nursing services, delicious meals and engaging social activities at our SarahCare Day Center in Malvern.**

**AND BE HOME FOR DINNER!**

**CALL TODAY FOR A FREE TRIAL DAY** Since 1985.

Tony Regina

A drought year strikes fear in the heart of superintendents nationwide. Understandably so, since water is largely considered the biggest obstacle golf faces today. Cost and access alone can trigger cause for panic in maintenance departments.

Steve Friedell and Jerred Golden smirk at the thought of a dooms-

gurus peace of mind when dry weather attacks.



“In a drought year, we look like the Taj Mahal,” says Golden, the club’s Director of Grounds since its inception in 1979. “The plant itself is a facultative lagoon. The only thing we do to treat the water is to aerate it.

**Golf Tip**

During this offseason try some indoor putting drills using just your right hand. The right wrist greatly determines the direction, speed and face angle of your putts. During the putting stroke be sure your wrist remains quiet and relaxed. Make these strokes only thinking about your target and you will feel how the wrist naturally releases and rotates the putter face through impact. Maintain that feeling on the greens next season and your putting will definitely improve.

**Matt Harvey, PGA**

*Missing a short putt does not mean you have to hit your next drive out of bounds. – Henry Cotton*

# Hershey’s Mill Has An Edge In Water Race

day drought scenario. It’s not a superfluous snicker, either. An exemplary wastewater treatment plant at Hershey’s Mill Golf Club gives the grounds

We put bubbles in, and nature does the rest.”

Hershey’s Mill is a 770-acre community that features a golf course amid nearly 2,000 homes. During its construction, a sufficient water treatment facility to accommodate its size didn’t exist.

“They really needed to develop an alternative, disposable way to get rid of this effluent,” says Golden. “The DEP said ‘how about spray irrigation?’ So that’s really what forced the developer’s hand into developing the wastewater treatment plant into the way it is now.”

The \$1 million facility went online in 1981. It collects 225,000 gallons of water a day from homes in the community. That water is then treated and sprayed onto the golf course or into permanent

spray fields — accessible year-round (weather-permitting). It takes 16 days for a gallon of water to process through the wastewater treatment plant. The water is chlorinated and its pH levels adjusted accordingly. Friedell, the 14-year golf course superintendent at Hershey’s Mill, can then incorporate the necessary nutrients into the water before it’s sprayed onto the golf course. The grass pulls in those nutrients.

“By the time you get past the roots, the water is crystal clear water again,” Golden said. “The land is an integral part of the disposal system because the grass is the ultimate filter.”

Hershey’s Mill uses approximately 50 million gallons of water on its course during the golf season. “That’s a number way above what normal golf courses would apply, but we’re trying to dispose of the water as well,” Golden said. “We have a much bigger footprint. We’re watering everything. It’s a synergy between the community and us. We need each other. They need our golf course as much as we need

their water. In a way, it’s a challenge to get rid of all of that water.”

The wastewater treatment facility is operated by Greenhill Sewer Association, a non-profit organiza-



tion that collects dues (nearly \$20 a month) from homeowners as well as funds for capital improvements along the way. As the development grew (Hershey’s Mill reached maximum capacity five years ago), the club only needed to increase permits for the plant, which was built to handle the current flow. Two branches

*Continued on page 49*



(From left) Director of Grounds Jerred Golden and Superintendent Steve Friedell



**Humpty Dumpty Had a Great Fall.**

www.SafeBathCo.com



**Install Grab Bars.**  
Call Now **610-696-1693**

## No Dental Insurance, No Problem

**Hershey's Mill Savings Plan \$150/year**  
Includes 2 cleanings, 2 exams and X-rays, and 25% off all other treatments

### Hershey's Mill Special Pricing

- Crowns \$800
- Implants \$999\*
- Full Denture Set \$1600
- Flexible Partial \$800

\*Make appointment for details



**Exton Dental Arts**

Ship Village Shopping Center  
913 East Boot Road, West Chester  
**610-701-0102**  
www.ExtonDentalArts.com

## HM GOLF CLUB SCORECARD (continued)

of the Ridley Creek run through the property. None of its containments reach the plant, and vice versa.

"As the development grew, our disposal of the water grew," Golden said. "We have all the water we're going to need." Friedell adds that "the quality of the water doesn't dampen the quality of the course."

Friedell can also incorporate nutrients into the water to ensure its quality, thanks to a fertigation system thru SynaTek Solutions, Inc. "Instead of having all these peaks and troughs of good quality and bad quality, now I can inject small amounts instead of having to go big," he said. "You keep that line steady so you don't have surges or declines in grass growth. You have consistency. It's all about balance. You want balance for so many things in life. We're trying to do the same with the grass so it responds the best way."

Technology is also vital in how Hershey's Mill uses its wastewater treatment plant. Through the mobile application ToroLynx, Friedell can monitor pump activity on his cell phone. If one of the course's 1,200 irrigation heads needs attention, he can switch it on or off remotely.

"I have the ability to make better water windows, tighten up everything and to maximize water usage or water efficiency," Friedell said. "That's good for

power usage, too, because whereas the old system was taking seven hours to water, that's just more power that you're sucking up. To do the same thing, use the same amount of water and to maximize the quality of the golf course, I can cut that water window in half."

Hershey's Mill, with a significant assist from the wastewater treatment plant, is an Audubon Sanctuary. Several golf course, municipality and housing



development brass inquire about the facility's interworking. Hershey's Mill is an H2O steward it seems.

"With the cost of water going up, at some point, facilities may have to look at this as an alternative," Golden said. "The cost of water may force their hand." Hand played and ready at Hershey's Mill. Hence the smiles Friedell and Golden shed.

*Tony Regina is in his fifth year as the Assistant Director of Communications for the Golf Association of Philadelphia. This article reprinted with permission from Golf Association of Philadelphia Magazine, Fall 2014 addition.*

**CLUBS/GROUPS ARE LISTED IN ALPHABETICAL ORDER**

**APPLE MAC CONNECTION**

*Carol Campanelli | Ulster*

With the holidays behind us, this is the perfect time to refine your computer skills and learn how to better utilize your iPad, iMac, and/or iPhone. Bring your questions to the Community Center on January 24 and become a more confident user. Coffee, tea, and refreshments will be available.

Weather is always a concern in our winter months, but if you are on my email list you will receive an email by 9:15am the morning of the meeting if the meeting is cancelled for inclement weather or for any other reason. Email me at [redacted] if you plan to attend but aren't on my list.

**BOOK CLUB**

*Anne McAssey | Merrifield*  
*Audene Paulson | Eaton*

*The Lowland* by Jhumpa Lahiri

An engrossing family saga of two very different brothers bound by tragedy, a fiercely brilliant woman haunted by her past, India torn apart by revolution, and an enduring love.

Join us on January 8 at 2pm, in the Sullivan House, to talk about this book.

**CASUAL SINGING GROUP**

*Sally Thompson | Franklin*

I am thanking my lucky stars that a wonderful group of acoustic musicians from West Chester Unitarian Church stepped in and have agreed to be our

accompanists, along with our own Mark Blaha. So on November 5, we had five guitars all strumming and enough singers to keep up with them! It was an evening filled with joy as we sang so many favorite songs. The Casual Singing Group has everything in place now for more fun evenings. At the Unitarian Church they have a sing-along and a "Coffee House" often, so these were no ordinary guitar players. Much to my amazement, they thanked me for inviting them and it is likely some or all of

them will be with us each month!

I did experience some growing pains along the way and apologize to anyone inconvenienced by changes in times and days; but once you sing with us, I know you will agree that it was worth the agonies to be able to enjoy the ecstasies! Regardless of your ability, come sing with us

on Wednesday, January 7 at 7pm.

**CHESS CLUB**

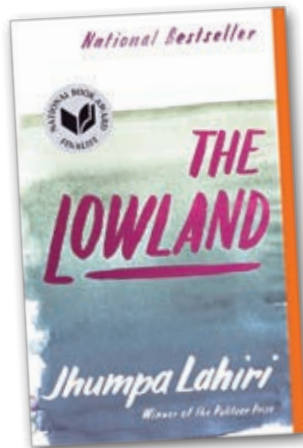
*Miki Sugar | Quaker*

Meetings are on Thursday at 1:30pm in the Sullivan House. New members, or for more information, please call [redacted]

**COMPUTER CLUB**

*Don Trauger | Kennett*

Be sure to attend the PC Club meeting on Tuesday, January 13 at 7pm in the Ardmore Room of the Community Center. There is a new topic discussed



each month as well as a question and answer segment. So bring your questions and we will make an effort to get you answers.

**DOMINOES**

*Sheila DiCroce | Devon*

Join us for Mexican train dominoes and some fun with your neighbors. We meet Wednesdays from 1pm to 3:30pm upstairs in the Community Center. For more information call [redacted]

**OPEN BUNCO**

*Agnes O'Leary | Eaton*

Open Bunco meets the second Tuesday of the month through April, with the exception of November, at the Community Center Hall. All are welcome, so bring your friends and neighbors. A \$3 fee is paid at the door and used for prizes that night. Doors open at 6:30pm for socialization and with the game promptly starting at 7pm. Play stops at 8:30pm. We are hoping for a group of 40 so please email if you wish to attend. Walk-ins are welcome as long as we have room. Contact Pat Phillips at [redacted] or [redacted], or Barbara Harney at [redacted]

**PINOCHLE CLUB**

*Erna Graham | Franklin*

The Pinochle Club meets in the upper room of the Community Center on the first and third Tuesday of each month,

with play from 1pm to 3pm. We are low key and welcome anyone who has previously played or would like to learn to play. We don't play for money, and we start promptly at 1pm. Pinochle is a fun game and provides healthy mental activity. Our members are patient and enjoy interacting with new members. For more details, call [redacted]

**POKER CLUB**

*Mike Brindisi | Jefferson*

Are you interested in playing in a low stakes poker game and having fun for a few hours every Thursday evening from 7pm to 10pm? We play in the Community Center and all are welcome. Call [redacted] for more information.



There's always something happening at the Community Center. Join in today!

**RUMMIKUB**

*Maryann Tracey | Ulster*

We meet the second and fourth Tuesday of each month on the lower level of the Community Center from 2pm to 4pm. Join us for a fun game. For additional information call [redacted]

Don Trauger | Kennett

Many residents have Wi-Fi (a local area wireless technology) in their homes. This wireless device may be built into a cable or DSL modem, or it may be a separate device. In any case, the name of the Wi-Fi device is called the router. The router provides the wireless signals necessary for laptops, tablets, smart-phones, etc.

Wireless connections can be finicky. If your laptop or tablet is too far away from the router you won't connect reliably. If the router is poorly located in the home, such as next to a basement wall or in a closet, you can lose signal strength causing problems with connectivity. If your router has antenna rods make sure they are positioned so

the signal is maximized. The wireless signal emanates perpendicular to the rods. If your wireless device is on the same floor as the router, then the rods should be vertical.

When you can't connect to the network, for Internet access or other, try shutting off the power to the modem, the router, and your wireless device. Keep the power off for 20-30 seconds, then turn on the power to the modem first, the router second, then your wireless device. DSL (Verizon) modems may be prone to Internet connectivity problems. Make sure the DSL light and Internet lights are both green. Occasional blinking is okay. If either are red, call Verizon. Another reason for a connectivity problem could be that the router's wireless password doesn't match the password in the wireless

device. They must both match to establish connectivity between the router and the wireless device.

If for whatever reason you still can't connect, there's some hope if you are a Comcast customer. In the last few years Comcast has installed public Wi-Fi in various locations in the Philadelphia area. One of these locations is our adjacent shopping center. For your laptop, click your Internet icon near the clock and look for a wireless signal labeled "xfinitywifi". If you see it click it, then click Connect, then open your browser (Internet Explorer, Chrome, etc.) and sign in using your Comcast Internet user name and password. Unfortunately, this signal will not cover all of Hershey's Mill. The best coverage will be in the villages closest to the shopping center.



Having an alternative Wi-Fi connection can be helpful if you have equipment problems. Another good reason would be if your guests ask to use your computer for their personal use. If they bring their own device steer them to the Comcast "xfinitywifi" connection. They can use their own Comcast Internet credentials or use yours without any impact on your network.

Space doesn't permit coverage of other possible Wi-Fi connection problems, but they can be discussed at our monthly PC Club meeting

# Wi-Fi Connectivity

which is held on the second Tuesday of each month at 7pm upstairs in the Community Center. Our next meeting will be held on Tuesday, January 13. We hope you will join us.



AAA CAR CARE CENTERS


## YOUR AAA STORE OFFERS SO MUCH MORE



**Member Services:**

- Travel Planning and Savings (Cruises, Tours and Hotels, Car Rental, Rail and Air)
- Exclusive Group Travel Discounts
- Discounted Movie Tickets\*
- Free TripTiks®, Maps, and TourBooks®
- Discounted Luggage and Travel and Car Accessories

For all of your travel needs, contact your fellow Hershey's Mill resident, Stanley Krangel:



**AAA Wayne**  
**Car Care • Insurance • Travel Center**  
 849 W. Lancaster Avenue  
 Wayne, PA 19087  
 610-263-8150, ext. 71261  
 skrangel@aaamidatlantic.com

\*Movie tickets must be purchased in advance from AAA Mid-Atlantic to receive discount. Product selection varies by location. Movie tickets are not available in all AAA Mid-Atlantic stores. Movie tickets are available for select theater chains only. Check with store for details. Actual savings will vary based on theater location where tickets are redeemed and current adult box office rates. ©AAA Mid-Atlantic 2014

Save on Medicare Insurance!

Rates for Women Start at \$104/mo. for Plan N.

You Can Switch & Save Anytime!

Call HM's Joe Murphy at 610-918-0590  
for a **FREE QUOTE.**

Joe Kennedy | Princeton

More than 100 years ago, the archives of the Historical Society of Montgomery County show, there was an extensive archaeological dig at a sealed cavern at Port Kennedy on the Schuylkill. The dig, which was hoped would find traces of prehistoric humans, was conducted by the archaeologist Henry Chapman

Mercer includes an oral history by local residents who attended social events in the cave.

He gives this description of the place: “a ... large chamber 10 to 12 feet high ... plenty of stalactites ... clay floor ... small passages leading to other chambers.” Dances and picnics were held there by candlelight. It appears that additional blasting from the limestone work collapsed the ceiling about 1855. Further

## Archaeological Dig At Port Kennedy

Mercer, curator of American and prehistoric archaeology at the museum of the University of Pennsylvania. Though no traces of early humans were found at the excavation, the dig was notable for what it did unearth.

Limestone quarrying had been conducted at Port Kennedy for several years in the first half of the 19th century when, in 1847, blasting opened the entrance to a huge underground chamber. In his report, *A Cave at Port Kennedy, Pennsylvania and its Partial Excavation in 1894, 1895 and 1896*,

blasting in 1871 revealed another such cave, full of the “remains of Pleistocene mammals, reptiles, batrachians, insects and plants.” According to the historical society’s files the discovery created “little excitement.”

In 1896, another cave was found about 300 yards from the river bank at the limestone quarry of Archibald Erwin. The roof of this cave had partially fallen in and water damage was quickly causing disintegration. That discovery caught the attention of the curator of the Academy of Natural Sciences, Samuel

Dixon. After making a personal inspection of the site, he received permission to explore the cave and employed Mercer to supervise the actual dig. According to Mercer’s handwritten notebook, to be found at the Spruance Library of the Bucks County Historical Society, the first work began in fall 1894. There were two additional work periods in fall

in the cave, which was a big disappointment to all those involved in the dig.

Mercer hypothesized in his report that because many of the remains of the creatures found in the cave were not animals that commingled with one another, it must have been disaster that drove them into the same space. Perhaps the flooding river forced stampeding animals into the cave, where



1895 and 1896. The cave that was explored was filled with earth and quarry refuse so Mercer divided the diggings into four subdivisions and dug to a depth of 10 feet.

Using pickaxes, chisels, crowbars, knives and trowels, the workers in three years “removed 300 cubic yards of fossil-bearing earth.” This revealed bits and pieces of jaws, teeth, skulls and leg bones mostly embedded in rocks – remains belonging to sloths, beavers, bears, skunks, rabbits, mastodons, turtles and saber-toothed tigers that Mercer dated geologically to the Pleistocene era. There was no evidence of human habitation

they fell through an opening into the main gallery, from which there was no escape.

When quarry blasting was resumed in the area, all sites were destroyed or sealed.

In 1897, Mercer left the University of Pennsylvania Museum and became a legendary figure in local history. With the help of a few workers, he built the Mercer Museum to house his collection of pre-1850 tools; built his castle home, Fonthill, and the Moravian Pottery and Tile Works, all in the Doylestown area. In addition, he was a great promoter of the work of the Bucks County Historical Society. He died in 1930.



BeauxTours.com

beauxtours@verizon.net  
1-800-701-6705

Tours for small groups in France

Featuring Hunter Douglas & Other Manufacturers

# BLINDS 4 U

## 610-246-3100

Shop At Home Service for Hershey's Mill.  
We Will Beat Any Printed Installed Price!



- Silhouettes
- Luminettes
- Pleated & Honeycomb Shades
- Duettes
- Country Wood Blinds
- Plantation Shutters
- Mini Blinds
- Verticals
- Roman Shades

Free Quotes ❖ Measuring ❖ Installation  
Bottom line pricing all the time!

**CALMON PATIENT ADVOCATE**

**JULIETA CALMON**



**PATIENT ADVOCATE**  
(484) 802 1055  
CALMONPATIENTADVOCATE.COM  
CONTACT@CALMONPATIENTADVOCATE.COM

- RETIRED PHYSICIAN
- PROVIDES INDIVIDUALIZED CARE TO MEET SPECIFIC NEEDS
- ACCOMPANIES PATIENTS TO DOCTOR'S APPOINTMENTS
- HELPS COORDINATE POST-HOSPITAL CARE
- REVIEWS MEDICATIONS
- SPEAKS ENGLISH, PORTUGUESE & MEDICAL SPANISH



MICHELLE AITKEN, DDS

# SMILE SOLUTIONS

Exceptional Dentistry, Affordable Prices

## HERSHEY'S MILL VIP DENTAL PLAN

# \$199/yr

includes two cleanings, two exams, annual x-rays,  
plus a 15-25% discount off treatment

- **15% Discount for Hershey's Mill Residents**  
*(Compare our fees to other dental offices in the area . . . You'll be surprised!)*
- **Most Insurance Plans Accepted**
- **In-home Service for Dentures and Partial**
- **Fast turn-around on Dentures and Partial**
- **Digital, Low-Radiation X-Rays**



- Landscape & Hardscape Services
- Design & Installation
- Mulch Delivery & Installation
- Annuals, perennials, hanging baskets and vegetable plants

Located between  
Greenhill Rd & Paoli Pike  
PAHIC #5435

Landscape & Garden Center  
Landscape Design & Maintenance  
Holiday Décor

922 North Chester Road  
East Goshen, PA 19380

Phone: 610-692-2422

www.delvacchio.com



The best care comes  
in the comfort of home.

BAYADA Home Health Care  
provides nursing and assistive care  
24 hours, 7 days to keep people of  
all ages safe at home.

Call 610-255-7307 | www.bayada.com



**BAYADA**  
Home Health Care

Compassion. Excellence. Reliability.



## HERSHEY'S MILL SPECIAL PRICING

<b>zcom!</b> Whitening <small>(regularly \$750)</small>	<b>\$299</b>
Crown .....	<b>\$850</b>
Custom Full Set Denture ....	<b>\$1,750</b>
Flexible Partial .....	<b>\$1,050</b>
Reline .....	<b>\$185</b>

Located in the Hershey's Mill Village Shopping Center

1381 E. Boot Road • West Chester, PA 19380

(610) 918.4995 • [brilliantsmilesdentalgroup.com](http://brilliantsmilesdentalgroup.com)

Starting off a new year with friends and family gathered for the Super Bowl, or the newly minted college football playoffs, is never a bad choice. Update your arm-chair fan favorite chip and dip combos with these unique and delicious recipes.

### Corn Grits Chips & Salsa

A southern variation of chips and dip sure to please friends and family.

- 2 cups corn grits (aka polenta)
- 6 cups water
- 2 ½ teaspoons kosher salt
- 3 tablespoons unsalted butter
- 1 tablespoon corn oil
- 2 16 oz jars roasted red pepper, drained
- 1 small tomato, seeds removed
- ¾ cup pitted kalamata olives
- 3 tablespoons capers
- ¾ fresh parsley
- ½ large red onion
- 2 cloves garlic, finely chopped
- 1 small jalapeno pepper
- ½ cup olive oil

**For Chips:** In a large saucepan over high heat, bring water and salt to a boil. Gradually stir in grits, then reduce heat and simmer, stirring frequently, until very thick (about 30 minutes); use care as mixture will bubble and pop. Stir in butter and corn oil thoroughly. Oil a sheet pan well and spread the mixture evenly to about ¼ inch thick. Let cool completely (refrig-

eration will expedite). Cut grits into 1 ¾ inch squares (or use round cutter) and cook squares on a well greased grill pan over high heat until lightly colored and with distinct grill marks.

**For Salsa:** Chop peppers, tomato, olives, capers, parsley and onion as fine as desired, then combine with finely chopped garlic and pepper; may be done in a small food processor in opposite order. Mix in olive oil and let sit at least 30 minutes. Top grits chips with salsa shortly before service to keep crisp; the chips do not “dip” well.

### Spicy Pita Chips & Hummus

*This Mediterranean pair will wake up the taste buds. Can be made with four 7-8" purchased pitas if needed.*

- 1 cup whole wheat flour
- 2 cups flour
- 1 ½ teaspoons kosher salt
- 1 tablespoon honey
- 1 packet (or 2 tsp) instant yeast
- 1 ¼ cups warm water
- 2 tablespoons olive oil
- 3 cloves garlic, finely minced
- ½ cup olive oil

- 1 teaspoon ground cayenne pepper
- ½ teaspoon ground ancho chili powder (omit for less heat)
- Coarse salt

- 1 15 oz can chickpeas, drained
- ¼ cup fresh lemon juice
- ¼ cup tahini
- 1 clove garlic
- 3 tablespoons olive oil
- 1 teaspoon kosher salt
- ½ teaspoon ground cumin
- ½ teaspoon paprika

**For Pita:** In a bowl, mix the flours, salt and yeast, then stir in the oil and water to form a ball (add up to ¼ cup water additional as needed). Let rest, tightly covered, for 15 minutes. Turn out dough and knead for 10 minutes, or knead in mixer for 5 minutes. Form a ball and return to bowl, oiled, and let rise until doubled. Punch down dough and divide into 8 pieces; round and cover these, and let rest 10 minutes. Place a sheet pan on oven rack about 6-8 inches below the broiler; let broiler come to full heat. Roll out 2 pitas (about 8") on a heavily floured surface and place on hot pan. Cook until puffy (about 1-2 minutes), flip with tongs, and cook another 1-2 minutes until lightly browned (a bit of char is nice);

remove to a plate, stack and cover with a towel. Cook remainder, stacking all together to soften, and let cool completely.



**For Chips:** Cut apart the 2 halves of 4 pitas (or don't and use all 8 pitas for thick soft chips), stack and cut into 6 wedges. Combine garlic, oil, and ground peppers in a large bowl, then add wedges and stir to coat completely. Spread in a single layer on a sheet pan, sprinkle with coarse salt, and bake in a preheated 400°F oven until browned and crisp (about 5-6 minutes); turn chips once for crisper chips.

**For Hummus:** In a food processor, process lemon juice and tahini for 60 seconds, scraping bowl once. Add the oil, garlic, salt, cumin and paprika and process 30 seconds. Add half the chickpeas and process for 60 seconds, then scrape down bowl, add remaining chickpeas and process until desired consistency (about 2 minutes for very smooth). For a thinner dip, or if not smooth enough, add 1-3 tablespoons water while food processor is running.

**We Are NOT Happy, Unless YOU Are!**

610-431-3338

Fully Certified & Insured LLC with 30 Years of Experience

Count on Us to  
Provide Low Prices, Rapid  
Response & Service on  
All Major Brand Appliances

- Refrigerators
- Ovens
- Dishwashers
- Washing Machines
- Microwaves
- Dryers
- Ranges
- Freezers

RICHARD. J. EGAN PAINTING CO.

The Superior Craftsmen ... We are Painting Specialists

Look at Princeton, Glenwood, Oakmont, Ashton, Robynwood, & Ulster Villages, & Sullivan House  
Ask Their Maintenance and Architectural Committees About Us

INTERIOR & EXTERIOR PAINTING • WALLPAPER HANGING  
DETAIL SPECIALISTS • REPLACEMENT WINDOWS • CUSTOM CARPENTRY  
POWER WASHING • WATERPROOFING DECKS • FULLY INSURED

Brushing and Rolling are Best! ...Spraying upon Request

FREE ESTIMATES    Call: 610-353-3570

# Quality Care by Caring Professionals

We are committed to the philosophy that Barclay Friends must be a good place to work if it is to be a good place to live.

## Barclay Friends

A KENDAL AFFILIATE Together, transforming the experience of aging®

A Continuing Care Community with Post-Acute Rehabilitation



"The staff at Barclay Friends is well-known for its longevity and reputation for care."  
—Brooks Adams Research

700 N. Franklin Street  
West Chester, PA 19380  
610-696-5211  
www.bf.kendal.org



©2012 The Kendal Corporation

EEO/ADA/LEP



## ACTIVITIES CONTACTS

Alzheimer's/Dementia Support Group.....	Barbara Mulvey .....
Art Group.....	Dave Linton .....
The Baby Boomers .....	Christy Herschel .....
Bible Study (Women's).....	Marian Malloy .....
Bingo.....	Ollie Price .....
Book Discussion Group .....	Anne McAssey .....
Bowling .....	Frannie Lytle.....
Bridge Groups:	
WH Duplicate, Mon. 12:30pm.....	Joey Livesey.....
WH Duplicate Bridge, Mon. 7pm.....	Lee Gamma .....
Golf Club Tuesday Bridgers, Members Only.....	Roger Gibboni.....
Social Club Party Bridge, Members Only.....	Susan Hackstaff.....
Golf Club Friday Bridge, Members Only.....	John Marks.....
Bus Trips .....	Marc Fraser.....
Card Games .....	Penny Adolf .....
CareSharers .....	(Answering Service).....
Chess Club .....	Miki Sugar .....
Chester County Hospital Auxiliary.....	Constance Campbell.....
Community Center Reservations .....	(Answering Service).....
Computer Club (PC).....	Don Trauger.....
Computer Club (Apple Macintosh).....	Carol Campanelli .....
Cradle Stitchers.....	Donna Faunce.....
English Darts.....	Sam Arcana .....
Exercise Groups:	
Aerobic Dance/Exercise.....	Barbara Thomas .....
Ageless Exercise.....	Gayle Ulrich.....
Tai Chi .....	Mitch Goldfarb.....
Yoga.....	Ellie Sybesma .....
Havurah (Friends Group) .....	Tillie Markowitz .....
Garden Club.....	Jim DiCarlo.....
Golf Club.....	Scott Martin .....
Investment Group.....	Fil Rizzo .....
Knitting Circle .....	Bernice Soffer.....
Library Board.....	Becky Bell .....
Mah Jongg.....	Erna Graham .....
Model Railroaders.....	Dave Voorhees.....
Paoli Hospital Auxiliary.....	Patty Murphy.....
Pinochle Club .....	Erna Graham .....
Players .....	Frannie Lytle.....
Poker Club .....	Mike Brindisi .....
Pool.....	Carol Campanelli .....
Quilters.....	Mary Bauchman .....
Rummikub .....	Maryann Tracey.....
Singers.....	Bonalyn Mosteller.....
Social Club.....	Lee Gamma .....
Sports Group.....	Helen Greco .....
Stress Management.....	Anita Weeks.....
Sullivan House Reservations.....	(Answering Service).....
TV Channel 20.....	Don Trauger.....
Wood Shop.....	Ben Ellis .....

Additional contacts available in the annual *HM Resident Directory*

## Stowers

Handyman Service LLC

Home Maintenance & Repairs

- Carpentry
- Painting
- Drywall Repair
- Tile Grouting
- Tub Caulking
- Window Repair
- Furniture Moving
- Hand Rails Installed
- Floor Repair
- Kitchen Faucets

and lots more!

Resident handyman serving all Hershey's Mill villages

Call Dan Stowers  
484-467-3361

Fully Insured  
Reg. # PA 061617



10% Discount with this ad

## DECK TOO HOT?

A STATIONARY AWNING OR RETRACTABLE AWNING CAN DOUBLE THE USE OF YOUR DECK. ALL AWNINGS ARE CUSTOM MADE IN OUR SHOP FOR THE GREATEST SAVINGS — TO YOU!

INSTALLATIONS - ESTIMATES ARE ALWAYS FREE  
AWNINGS • TENT RENTALS  
BACK LIT AWNINGS • SINCE 1928

call 302-652-6612

E.W. BROWN, Inc.

## ADVERTISERS' INDEX

3D Autobody & Collision Centers.....	38	Hershey's Mill Landscape.....	31
AAA Car Care Centers – Wayne.....	52	Hershey's Mill Realty.....	3
Angel Companions.....	2	John S. Price, Jeweler, Inc. ....	30
A to Z Appliance Repair.....	58	Kevin Free.....	14
Barclay Friends.....	60	Knots & Weaves.....	28
Bayada Home Health Care.....	56	MacLaren Fabrication.....	30
Beaux Tours.....	54	Medicare Insurance Services.....	53
Berkshire Hathaway Home Services.....	23	Oliver.....	31
Blinds 4 U.....	56	Oriental Pearl Restaurant.....	39
Boyles Flooring.....	8	Paoli Hospital.....	35
Brewer Heating & Air Conditioning.....	12	Paoli Rug Co.....	22
Brooklands Audiology, Inc.....	63	Podiatry, Ronald Melincoff, DPM.....	2
Buckley, Brion, McGuire & Morris LLP.....	29	Podiatry Care Specialists.....	20
Calmon Patient Advocate.....	56	RE/MAX Main Line.....	42
Chester County Orthopaedic Associates.....	6	Richard J. Egan Painting Co.....	59
Cordes Contracting.....	42	Riddle Village.....	18
Deck Protect Plus LLC.....	20	Ruggeri Cadillac.....	4
Del Vacchio Landscape & Garden Center.....	56	Safe Bath.....	48
E.W. Brown, Inc.....	60	SarahCare.....	45
Exton Dental Arts.....	48	Seniors Helping Seniors.....	15
Franklin Auto Spa.....	22	ShelfGenie.....	44
Frazer Dental Care.....	31	Smile Solutions.....	57
General Warren Inne.....	42	Stowers Handyman Service LLC.....	60
Haller Enterprises, Inc.....	34	Surrey Services for Seniors.....	34
		Survival Essentials.....	13
		Toninos Pizza & Pasta Co.....	30
		Wagner Real Estate, Inc.....	64
		Wellington.....	38

HMC-TV thanks our advertisers for their support.

When you contact one of our advertisers, make sure to mention that you saw them in the *Guide and Digest!*

**I Listen...**

**so you can hear better!**

**Patricia A. Cohen MA CCC  
Licensed Audiologist**



**Brooklands Audiology inc.**

*Meeting Your Hearing & Budget Needs*

*Over 25 years experience*

*Serving Hershey's Mill for over 12 years*

**Complete Hearing Care**

**State of the Art, Rechargeable, Virtually Invisible**

**Digital Hearing Aids**

**Testing Repairs & Service**

**Amplified Telephone & TV Devices**

**Hershey's Mill Courtesies**

**20% off already discounted Hearing Aid Prices**

**0% Financing Easy Payment Plans 60 Day Trial Period**

**Free Monthly Hearing Screenings at the Community Center**

*I represent you to the Major Manufacturers*

**Please Call 610-408-9250** for appointment

**301 Lindenwood Dr. Malvern – Off Rt 30 2 Lights North on Rt 29**

**Across from Wegmans**





**Pat Meehan**  
**610-574-2465**  
**Eaton Village**

**John Clarke**  
**610-547-3861**  
**Eaton Village**

**Lynne Carter**  
**610-291-1282**  
**Kennett Village**

## **Trust the team that lives here to sell your home.**

We sell homes exclusively in Hershey's Mill – so we have a unique understanding of the real estate market here. Using our knowledge and expertise, we will market your home to get you the best price possible.

We've sold hundreds of homes throughout the Mill and we are ready to sell yours. After all, we *live the lifestyle we sell.*

*Selling • Buying • Estates*  
*Serving clients exclusively within Hershey's Mill*  
[www.HersheysMillTeam.com](http://www.HersheysMillTeam.com)



**WAGNER INC.**  
**REAL ESTATE**  
4 Generations Since 1930

610-446-2300