

APRIL 2015

GUIDE — AND — DIGEST



A PUBLICATION OF HMC-TV AT HERSHEY'S MILL

Healthy Feet for an Active Life

Conservative, non-surgical options for most foot conditions



DR. RONALD H. MELINCOFF

Primary Podiatric Medicine

Fellow American Professional Wound Care Association
Specializing in the Care of Diabetic and Medically-At-Risk Feet

Day and evening appointments

610-692-0578

Goshen Executive Center, Suite 200-B
1450 East Boot Road
(Boot Road and Paoli Pike – Opposite CVS)



ANGEL COMPANIONS®



Affordable and compassionate care by a locally owned and managed company - we are licensed and our employees are bonded & insured.

Please call for a free assessment:

610-644-8780

Home Care for Seniors

- Personal care
- Hospice assistance
- Meal preparation
- Medication reminders
- Laundry
- Light housekeeping
- Companionship
- Transportation

**Ask about our
Live-in Program**

www.angelcompanions.net

Your On-Site Real Estate Team at Hershey's Mill

Our experienced team has sold more homes in Hershey's Mill than any other, and has been doing so since 1978. No other agency captures buyer interest like our *on-site* office provides.

In a complex market, it takes more than a basic listing to achieve your goals. So when you need market information, are planning to sell, or looking to purchase, we invite you to stop in at the only full service real estate office at Hershey's Mill. Selling homes here is our *only* business.

We are located at the Main Gate, and open 7 days a week, so you can meet with an agent when it is convenient for you.

610-436-8922

www.hersheysmillrealty.com



Lillian Willis



Monica Connolly



Carol Flynn

1500 Greenhill Road, West Chester, Pennsylvania 19380

Office hours are Monday-Saturday from 10-5 p.m.,
Sunday from Noon-5 p.m., and by appointment.

We recommend an appointment for viewing properties.

Hershey's Mill Community-TV

A fully self-supported nonprofit organization.

20 Hershey's Drive, West Chester, PA 19380
Tel 610-436-5922 • Fax 610-436-6429

Guide and Digest Email: hmctvguide@comcast.net
Business Email: hmctv@comcast.net



HMC-TV Board of Directors

Donald J. Trauger, *President* Carl Fletcher, *Vice President* Louise O'Brien Lee McCarthy
Margie Joyce, *Treasurer* Helen Heller, *Secretary* Jack Keeley

All submissions are welcomed (including articles no longer than 500 words). HMC-TV reserves the right to determine suitability. Send to hmctvguide@comcast.net, Attention Editor. Hardcopy articles are no longer accepted. Submissions must be received five weeks in advance of the issue (no later than the 22nd of the previous month) for possible inclusion in the HMC-TV *Guide and Digest*. Any article received after that date will be reviewed for publication the following month. All articles are subject to editing for space, clarity, and grammar. Contents are from various sources; the information and opinions presented are those of the author, and may not reflect those of Hershey's Mill Community-TV, its officers, or directors.

HMC-TV Guide and Digest

Volume XVI Number 4 – April 2015

Editor Louise O'Brien

Featured Writers

Gay Barry, Joe Kennedy, Louise O'Brien, Sally Shabaker, Don Trauger

Advertising/Marketing Director Jack Keeley

Marketing Finance Director Gerry O'Brien

Volunteer Coordinator Lee Gamma

| | | |
|--|-----------------------------------|-----------|
| | From The Main Gate | 7 |
| | Getting To Know You | 8 |
| | Master Association | 14 |
| | HM Bus Trips | 18 |
| | HM Series Trips | 23 |
| | Resident Directory Changes | 25 |
| | Dining Out | 28 |
| | HM Library News | 31 |
| | Activities Calendar | 34 |
| | Community News | 38 |
| | Sullivan House | 42 |
| | HMC-TV Ch20 Programming | 46 |
| | Classifieds | 48 |
| | HM Golf Club | 50 |
| | Flowers and Fire Trucks | 53 |
| | Club News | 54 |
| | Technology Tips | 56 |
| | Local History | 60 |
| | Recipes | 63 |
| | Activities Contacts | 65 |
| | Advertisers' Index | 66 |

Ruggeri Cadillac Moving Sale Event

During our Moving Sale Event Mark Ruggeri is selling 2014 and 2015 Cadillacs at GM Supplier Prices.

(2015 ATS Coupe & Escalade excluded)

Moving 1 mile south to 1550 Wilmington Pike. New location, same great commitment!

610-455-1700
RuggeriCadillac.com
1265 Wilmington Pike (Rt. 202)
West Chester, PA 19382

RUGGERI CADILLAC
OF WEST CHESTER

Superior Cadillac Sales & Service in Chester County Since 1933

Cover: The colors of spring beginning to show at Sullivan House. Read about efforts to preserve and increase the usage of this historic building on page 42.

FOOT AND ANKLE CARE IN CHESTER COUNTY IS NOW JUST A STEP AWAY



Orthopaedic Surgeon
Greg Kirwan, D.O.
Foot and Ankle Specialist

- Specializing in operative and nonoperative treatment in all areas of foot and ankle disorders
- Focuses on being YOUR partner in foot and ankle care
- Practices at our West Chester and Kennett Square offices of Chester County Orthopaedic Associates



THE ORTHOPAEDIC CENTER
Chester County Orthopaedic Associates

We specialize in:

MINIMALLY INVASIVE SURGERY
TOTAL JOINT REPLACEMENTS
SHOULDER RECONSTRUCTION
SPORTS MEDICINE
FRACTURE CARE
SPINE CARE
HAND SURGERY AND REHAB
PHYSICAL THERAPY
MRI
SPINAL SURGERY
FOOT AND ANKLE CARE

Our Team:

| | |
|-----------------------|----------------------|
| John Benner, MD | Chet Simmons Jr., MD |
| Jeff Citara, DO | Mark Tantorski, DO |
| Robert Huxster, MD | Adrienne Towsen, MD |
| Todd A. Michener, MD | Richard Ziegler, MD |
| Matthew Schaeffer, MD | Greg Kirwan, DO |

West Chester

915 Old Fern Hill Road
Building A, Suite 1
West Chester, PA 19380
T: (610) 692-6280

Mon - Fri, 8:00-4:30

Kennett Square

400 McFarlan Road
Suite 100
Kennett Square, PA 19348
T: (610) 444-1344

Mon - Fri, 8:30-4:00



visit us at ccortho.com or premierortho.com

FROM THE MAIN GATE

Marc Fraser | Director of Security

In October 2014, Hershey's Mill installed new guest call boxes at the North and Main Gate guest entrance lanes. In order to use the call boxes to gain entry into Hershey's Mill, visitors must now:

1. Press the "phone" button, and
2. Enter the host resident's 4-digit house/address number.

Note: If the number contains fewer than four digits, the guest should add the appropriate number of "0"s to the *beginning* of your address in order to make it a 4-digit number. For example, a guest visiting house number 91 would pull up to the call box, press the "phone" button, and enter "0091" to ring that house.

As with the previous system, the call box will ring the resident's phone and allow the resident to speak with the visitor at the gate. Once communication between resident and guest has been established, the resident can press "9" a few times on their phone (as on the

previous system) to open the gate for their visitor. Once the gate has opened, the line will go dead. There is no longer a beeping noise at the end of the call to signify that the gate has opened.

Guest Entry Call Boxes & Procedures

The new call boxes also contain a resident directory that is sorted alphabetically by last name. Therefore, if your guest does not remember your 4-digit house/address number, they can use the built-in directory to search for the 4-digit number they must enter to reach the host resident. *Please note that your telephone number will never be displayed to the visitor.*

If you have questions regarding the operation of the new guest call boxes, please contact the Security Department at



Sally Shabaker | Kennett

You would never guess from Bernice Soffer's soft-spoken manner and demur appearance that for nearly 20 years she was Philadelphia's premier advocate for the city's needy elderly. Today she is enjoying an active retirement, but in 1979 when she joined CARIE (Coalition of Advocates for the Rights of the Infirm and Elderly) issues

Center City office with a staff of 18, a budget of \$1 million and scores of programs. "To build financial stability, I started writing grant applications. Our first grant was for \$10,000 from the Pew Charitable Trust."

As money came in from private donations and from governmental and funding organizations, such as United Way of Southeastern Pennsylvania and the William Penn Foundation, the non-profit began hiring paid staff and

educational programming, and work with the legislative and regulatory issues that impact vulnerable older adults.

In 1995, Bernice retired from CARIE but that didn't end her commitment to helping the elderly. She has continued her pursuit by serving as a board member of Adult Care of Chester County

not working,' but I took that step and struck out on my own," she says. She had two children ages seven and eight. "I practiced my typing and got a job as a temp, then later landed a full-time job. The best thing was that my parents were there to take care of my children. I couldn't have done it without them."

"This experience taught me a lesson.

You really have to take a chance in life and not be afraid. You have to do the

Kennett

Meet Bernice Soffer

Caring For CARIE And The Rights Of The Elderly

about abuse and neglect of the elderly in long-term care facilities, as well as stories of mistreatment of the elderly in their own homes, were just coming to the public's attention. "When I joined CARIE, I had just gone through trying to find the right nursing facility for my mother, and it was terrible for both of us. The passion from that experience is what fueled my interest in CARIE and has remained my guiding principle throughout," says Bernice. "We were in on the ground floor of the development of modern standards for nursing homes."

Bernice soon became CARIE'S Executive Director and in time expanded the organization "from a small donated office with a staff of four young Vista volunteers and very little budget" to an agency in a

developed the CARIELINE, a telephone information, referral and counseling service for older people, their caregivers and professionals in the field of aging. The CARIELINE has assisted thousands of older people, many of whom are victims of abuse and neglect, and helped resolve problems faced in nursing homes and in the community. Today the agency which Bernice built has a national reputation as a leader in the field of aging through its advocacy,



Bernice has a mile-wide smile that Andy Warhol would have loved to put to print. We hope our modest rendition puts a smile on the face of all who know and appreciate Bernice.

best you can, regardless of the circumstances."

Soon, Bernice met and married the love of her

life. Dr. Leon Soffer, a psychologist and 38-year-old bachelor, headed Philadelphia's mental-health services. "It was a love match all the way," says Bernice. They had a son, Benjamin, and were married for 47 years. "Being around Leon's friends and associates, I realized that I too, would like to have a degree; and so at age 48 I started college."

"At first I attended Antioch College which had a campus in Philadelphia. They gave me credit for my life experience and so I earned a Bachelor's degree in health administration in two years. I then went on to Temple's

which offers a care service that enables older adults to thrive both physically and cognitively so that they can remain at home for as long as possible.

Although she has spent a great part of her life making things easier for others, life has not always been easy for Bernice. A child of the depression, she took the commercial course in high school so she could supplement her family's income after graduation. She worked as a secretary for four years until she married. "After nine years, I realized I was in a bad marriage. It took a great deal of courage to say, 'This is



Continued on next page

School of Social Work where I got my M.S.W. (Master's in Social Work). My first job was as supervisor of the Vista volunteers at CARIE. I saw that CARIE was filling a need and so it became my passion."

Another Passion: Art

"In the late 1960s, before I went to college, I was fortunate to be admitted to The Barnes Foundation and attended courses at the Merion location for three years," says Bernice. Through an engaging exploration of the elements and traditions of Western Art, using the Barnes collection as a guide, the classes teach participants how to look at and analyze art. "When I completed those classes, I then enrolled in the Barnes Foundation's horticultural classes for three

years. These educational programs really broadened my life."



At The Barnes, Bernice's art classes were taught by Violette de Mazia, an influential educator, author, artist and friend and advisor to Albert Barnes. Following her death, according to her will, the Violette de Mazia Foundation was created. This foundation also provides classes on art appreciation and visual literacy. "After Leon died in 2005, I began taking classes at their center in Wayne, Bernice explains. "I've taken six classes all on different subjects, and they introduced me to a new life." Some of the most meaningful classes to her were on Rembrandt, Picasso and Matisse. "To understand what the artist is saying to you, you must spend time looking at the painting and studying it. As I wrote a paper on Picasso's 'Woman Seated in a Chair,' it became apparent to me that Picasso really loved women. With Rembrandt I found that he could look into a person's soul. In Matisse's cut-outs, done late in life, he seemed to simplify, to focus on, and to extract the very essence of life."

"When I could no longer drive at night, I suggested that the Foundation offer classes at Hershey's Mill, and it has become a singular cultural opportunity for this community," says Bernice. "The last two sets of lectures here have been very successful, so in April they are offering a course on looking at Cubism.

Picasso, Braque, Duchamp and others will be discussed." The courses will be offered on three Thursdays, **April 16, 23 and 30**, from **1pm to 3pm** in the Ardmore Room of the Community Center. The classes are sure to open the eyes of anyone who attends. "After all," says Bernice, "I have so much more insight now that I am older than I did when I took the courses at the de Mazia in the '60s and '70s." For more information and/or to sign up for these HM courses, call the De Mazia Foundation at 610-971-9960 or visit their website at www.demazia.org.

As anyone can see, Bernice has improved the lives of thousands of others through both her career and her artistic pursuits. The world could use more people like her.



Woman Seated In Chair (1941) by Pablo Picasso [oil on canvas, 51" x 38"]

Updose with Bernice

How long have you lived at Hershey's Mill?
Twenty-five years.

Where did you live before moving here?
We lived and worked in Center City [Philadelphia] for 10 years after raising our family in Havertown. Then I schlepped my husband back to the suburbs again, because I wanted a garden. Hershey's Mill was 'way out' at the time, but I continued to commute to Philadelphia by train. Leon was retired.

In what activities are you involved at Hershey's Mill? I am chairperson of the Knitting Circle. It's a wonderful group of women; and a great outlet for me for eight years.

What advice might you give to others about growing older? Just go with the tide; smile and adjust to the inevitable physical and social changes and limitations that come with aging.

What is your favorite book? I just finished reading Anthony Doerr's excellent book *All the Light You Cannot See*.

Favorite TV Show? At present, *Downton Abbey* and the Brit mysteries.

Favorite saying or quotation? In regard to the above mentioned issues faced as we age, I paraphrase a quote attributed to Aeschylus: "In our sleep, pain falls drop by drop upon the heart, and in our despair, without even knowing it, comes wisdom through the awful grace of God."

BUCKLEY, BRION, MCGUIRE & MORRIS LLP
IS PROUD TO HAVE SERVED
HERSHEY'S MILL SINCE 1983

BUCKLEY BRION
MCGUIRE & MORRIS LLP

- ~ Wills & Trusts ~
- ~ Estate Administration & Real Estate ~
- ~ Personal Injury, Medical Malpractice ~
- ~ Accident Cases ~
- ~ Miscellaneous Legal Matters ~

FOR INFORMATION CALL ANTHONY MORRIS
PHONE: (610)436-4400, EXT. 103 OR
EMAIL: AMORRIS@BUCKLEYLLP.COM
118 W. MARKET STREET, SUITE 300
WEST CHESTER, PA 19382-2928



The best care comes in the comfort of home.

BAYADA Home Health Care provides nursing and assistive care 24 hours, 7 days to keep people of all ages safe at home.

Call 610-255-7307 | www.bayada.com



Compassion. Excellence. Reliability.

DECK TOO HOT?

A STATIONARY AWNING OR RETRACTABLE AWNING CAN DOUBLE THE USE OF YOUR DECK. ALL AWNINGS ARE CUSTOM MADE IN OUR SHOP FOR THE GREATEST SAVINGS — **TO YOU!**

INSTALLATIONS - ESTIMATES ARE ALWAYS FREE

AWNINGS • TENT RENTALS
BACK LIT AWNINGS • SINCE 1928

call 302-652-6612

E.W. BROWN, Inc.

One call handles it all

PLUMBING | HEATING | COOLING
ELECTRICAL | WATER CONDITIONING
AUDIO/VISUAL & AUTOMATION



HALLER ENTERPRISES, INC.

Hallerent.com

888.625.1500

CONTRACTORS OF THE YEAR



PA1867

ShelfGenie
EVERYTHING WITHIN REACH

Transform Your Kitchen Without Replacing Your Cabinets

Easier Access • Better Organization • More Storage

FREE IN-HOME DESIGN CONSULTATION

Karen J. McKinney, Designer
610.331.0006 | kmckinn001@aol.com | shelfgenie.com



Special Offer for Residents of Hershey's Mill!

50% OFF LABOR

with purchase of 5 or more Glide-Out shelves.

Limit one offer per household.
*Valid on Glide-Out purchase with offer. Cannot be combined with other offers.

We Do The Work, So You Don't Have To.

Downsizing to move can be overwhelming.

Call Survival Essentials.

610-804-8646
www.SurvivalEssentials.com
Jean Back/Chandler Drive/Hershey's Mill



Humpty Dumpty Had a Great Fall.

www.SafeBathCo.com



Install Grab Bars.

Call Now 610-696-1693

Harry Staller | Robynwood

One of the more potent messages developed to galvanize citizen participation and support of the WWII effort, "Uncle Sam Wants You," is germane to the situation facing Hershey's Mill and its interconnected community support services today.

dents. They would love to share their responsibilities with new volunteers ready to step up and contribute to the many aspects of Mill life.

In many organizations change is constant and the infusion of new efforts, new ideas and new approaches are vital to its continuance. If you have interests you wish to pursue, and are willing to

Mill Community-TV. This publication, published exclusively for Hershey's Mill and distributed free each month to residents, highlights local happenings, provides announcements and contact information, and celebrates the uniqueness of the Mill and its residents.

If you want to be involved in the varied activities offered, then seize the

ident Directory, and more; experience is welcome, but not necessary.

The Sullivan House Committee welcomes all volunteers in furthering its restoration effort for this historic structure. The HM Library has recently expanded its hours and may be looking for your help. The HM Pool Committee has always relied upon volunteers to assure successful summer seasons.

Hershey's Mill Wants And Needs You

The Mill has always been a community of volunteers and without their support and energies much of what we define as the unique and unparalleled Mill lifestyle would cease to exist. This has been true throughout the history of the Mill and assumes new and greater urgency as the Mill evolves and grows over time.

Unfortunately, the superior services provided by cadres of resident volunteers often provide an excuse for many to assume that further action or contribution on their part is neither needed nor required. To a degree misunderstood by many, all Mill activities are dependent on the selfless offerings of resident volunteers.

Many volunteers have been serving for a great number of years and continue to encourage new ideas reflective of the changing needs and desires of resi-

join with Mill friends and neighbors, your contributions are eagerly sought. Don't avoid getting involved or feel too timid to step forward; you and your ideas are needed and welcomed.

We all owe a debt of gratitude to those who have served and made the villages the center of our Mill lives and activities. Therefore, it behooves us all when a village need is demonstrated and is capable of being met by resident volunteers that we step up and offer our talents and support. A village can only fully function when it enjoys the support of all its residents.

Mill life offers a variety of activities catering to and reflective of the varied backgrounds and interests of its residents. To see some of the many activities taking place in our community, take a look at the recent *Guide and Digest* magazines; a publication of Hershey's



Hershey's Mill Community Open House on May 4, 2014. Committee members (from left) are Bob Irwin, Lillian Willis, Barbara Mangos, Roberta Peterson, Lynne Carter, Sally Shabaker, Kathryn Monahan, Joe Bove, and (not pictured) Jack Keeley.

opportunity, join up and make new friends while expanding your frontiers. All Mill amenities are open to and welcome new members.

HMC-TV (Channel 20) is always in need of volunteers to assist with producing the monthly *Guide and Digest*, video editing, program production, video camera operators, advertising sales, maintaining the residents database, producing the yearly *Hershey's Mill Res-*

And the HM Sports Group is constantly expanding its menu of activity options and encourages your participation.

If you want a little action to provide some spice to your day, take a look at the Activities Calendar in the *Guide and Digest*; a quick way to see what is happening each month. Select from the many offerings those best suited to you

Continued on page 17



Pine & Pine Law Offices

Nancy W. Pine Norman J. Pine
Attorneys at Law

Estate Planning, Estate & Trust Administration, Elder Law
104 S. Church Street, West Chester, Pennsylvania 19382
Telephone: 610.344.7100 Facsimile: 610.344.7500
www.pineandpine.net

Professional,
Experienced
& Practical
Legal Representation
Tailored for You.



VA Accredited Attorney



MASTER ASSOCIATION (continued)

and volunteer, join in and meet an outstanding and fun group of residents.

Do you have an interest not yet organized? Create a new activity group and invite others to join in with you. The Mill will be a better place because of **you**. Give it a try!

Whether within your village, or the extensive activities offered through the Master Association, become involved, participate, be informed and make the unique contributions only you can offer. Get involved to be involved!

I am proud to say that I have taken my own advice and gotten involved. I have served as President of Robynwood for 12 years, as a member of the Master Association for 12 years, Board of Directors for 8 years, and President of the Master's Association for 6 years. I know that being involved has not only benefitted me but the entire Hershey's Mill community. I am proud of the work we have done, and are doing, and hope that you will join us!



ORIENTAL PEARL RESTAURANT

*Sushi and Pan Asian Cuisine & **BYOB!***



SASHIMI DELUXE



MANGO CHICKEN & SHRIMP



PINEAPPLE CHICKEN & SHRIMP



OP SHRIMP & SCALLOPS

10% Off for H. Mill Residents

Goshen Village Shopping Center
1550 Paoli Pike • West Chester (Across from CVS)

610-692-5888 **OrientalPearlwc.com**

TRIPS ARE LISTED IN
CHRONOLOGICAL ORDER

Philadelphia Flyers

Tuesday, April 7, 2015

Cost: \$85

Departs: 4:45pm

Contact: Marc Fraser

Enjoy professional ice hockey, at the Wells Fargo Center in Philadelphia, as the Philadelphia Flyers face off against rival New York Islanders at 7pm. Utilizing the Hershey's Mill Bus for this trip saves you money by avoiding parking fees, provides discounted lower level seating (typically a \$107 cost alone), and eliminates the headaches that result from navigating I-95 and I-76 during rush hour. Tickets are limited, so sign up quickly! *Children age 8 and older are welcome.*

National Iron & Steel Museum

Wednesday, April 8, 2015

Cost: \$20 + Lunch

Departs: 9:45am

Contact: Jane Bevan

Join us as we travel to Coatesville to visit the National Iron & Steel Museum where a guide will explain the his-

The HM Bus Committee is always looking for more volunteers to share ideas and plan trips! If interested, call Marc Fraser at

All bus riders must be age 18 or older (unless specifically noted in description).

Trip payment checks should be made payable to "Hershey's Mill HOA".

Bus leaves promptly at the scheduled time. Please plan to arrive 10 minutes early.

toric developments of this local steel mill and many artifacts. The restored homes of Isabel Huston and Rebecca Lukens will be open for us. Remember the Silver Diners of the 1950s? We will be having lunch and fun at Wimpy & Dees Diner in Honey Brook. Lastly, we will be visiting the unique September Farm Cheese and Country Store. As in the 1950s, please pay for your trip lunch and all other trip purchases in cash.

Philadelphia Zoo

Monday, April 20, 2015

Cost: \$29 + Lunch

Departs: 10:00am

Contact: Priscilla Burt

Visit America's first zoo, located on a 42-acre Victorian Garden and

home to more than 1,300 animals; many rare and endangered. Recent additions include first-of-its-kind animal trail systems, including the Big Cat Crossing, Treetop Trail, and the Great Ape Trail. Lunch is on your own at the Zoo.

**Philadelphia Orchestra
"Bernstein's Mass"**

Friday, May 1, 2015

Cost: \$14 + Admission

Departs: 6:00pm

Contact: Ann Seraphin

Rarely performed due to the large resources required, Bernstein's Mass is truly a destination concert for audiences and participants alike. Only a few seats available, so call now to reserve your spot.

Reading Fightin' Phils & Fireworks

Saturday, May 2, 2015

Cost: \$24

Departs: 4:30pm

Contact: Marc Fraser

Join us for our first night of baseball in 2015! We will be traveling to FirstEnergy

Save all the Dates!

April 7, 8, 20

May 1, 2, 6, 12, 25, 29

June 7

Stadium in Reading, proclaimed by *Stadium Journey Magazine* to be "... easily one of the best parks in the minor leagues at any level and by nearly any criteria," to watch the Reading Fightin' Phils. This AA minor league affiliate of the Philadelphia Phillies will be taking on the Portland Sea Dogs for a 6pm game. After the game, we will stay to watch MegaBlast III, one of the largest fireworks shows in stadium history. In addition, Scott Rolen, longtime third baseman of the Philadelphia Phillies, and Dan Held will be on hand to be inducted into the Reading Baseball Hall of Fame. Our seats are located in the Section 5 yellow box seats directly behind home plate. Food is on your own at one of the many ballpark concessions.

Continued on next page



THE NATIONAL
IRON & STEEL
HERITAGE MUSEUM



The Philadelphia Orchestra
Yannick Nézet-Goguet Music Director

Fightins



Penn's Peak – "Branson Fever"

Wednesday, May 6, 2015

Cost: \$62

Departs: 9:00am

Contact: Ann McClay

Experience family dining at Penn's Peak while enjoying a performance of *Branson Fever*. The show features Dave Rehrig of Twitty Fever, the comedy of Crazy Elmer, and a tribute to Dolly Parton! They'll entertain you with favorites like "It's Only Make Believe", "Hello Darlin'", "You've Never Been This Far Before", "I Will Always Love You", "Jolene", "9 to 5", and more. Combine these chart-topping hits with the knee-slappin' comedy of Crazy Elmer, and you've got yourself one sure-fire afternoon of music and fun, country style! From this famous mountaintop venue you will also enjoy a breathtaking overlook of nearby Beltzville Lake, plus a commanding, picturesque 50-mile panoramic view of



northeastern Pennsylvania's Appalachian Mountains. Lunch and show are included in the price.

Penn's Peak – "A Tribute To Elvis"

Tuesday, May 12, 2015

Cost: \$66

Departs: 9:00am

Contact: Ann McClay

Experience family dining and live entertainment at *Mike Albert & the Big E Band: A Tribute to Elvis*. Mike Albert's "Ultimate Tribute" show has become known worldwide for the respectful portrayal of the late Elvis Presley. Mike won several major world Elvis contests and demand for his shows resulted in a seven piece Big "E" Band, to emulate the sound Elvis' band had in the Vegas shows and on tour. Mike's powerful voice lends itself well to every type of Elvis' music – 50s,

60s, and 70s rock and roll and love songs, as well as gospel; he sings it all! There is also a breathtaking overlook of nearby Beltzville Lake, plus a commanding, picturesque 50-mile panoramic view of northeastern Pennsylvania's Appalachian mountains. Lunch and show are included in the price.

Delaware Park

Monday, May 25, 2015

Cost: \$14 + Lunch

Departs: 10:15am

Contact: B.J. VanSchooneveld

Join us for an exciting day at the races! Watch the horse racing (beginning 5/26) or try your luck at slots and table games. \$30 free slots play is given to everyone on the bus. Lunch is on your own.

Philadelphia Phillies

Friday, May 29, 2015

Cost: \$49

Departs: 4:45pm

Contact: Priscilla Burt

Join us for an evening of baseball at Citizen's Bank Park as we watch our Philadelphia Phillies take on the Colorado Rockies in a 7:05pm game! Tickets

have been pre-purchased, and seating this season has been upgraded to Section 211. Food is on your own at one of the many ballpark concessions.

Schuylkill Riverboat Tour & Bartram's Garden

Sunday, June 7, 2015

Cost: \$55

Departs: 10:00am

Contact: Priscilla Burt

Enjoy our one-hour boat tour that highlights the past, present, and future of the Hidden River. The tour departs from Walnut Street Dock aboard The Patriot, a U.S. Coast Guard approved vessel; this is a reproduction of a 1920's commuter yacht. The vessel features wrap around seating, bar, restroom, and a sheltered, open stern. We will cruise to Bartram's Garden, home of America's first great botanist, for a picnic lunch in the covered pavilion. This will be followed by a self-guided tour of the historic garden, community farm, and recreational trail. The tour offers a setting and experience unlike any other in Philadelphia.





Podiatry Care Specialists, PC

Dr. Theodore G. Mushlin
Dr. Bradford J. Jacobs
Dr. Chad J. Friedman
Dr. Alexandra K. Grulke
Dr. Aabha M. Suchak

- Offering Professional Medical and Surgical Treatment of the Foot and Ankle.
- Ask about our Diabetic Shoe Program.
- Laser Treatment for Fungus Nails Available.

PodiatryCareSpecialists.com



Take a Step in the Right Direction

WEST CHESTER (2 LOCATIONS)

- 1593 McDaniel Drive
- 795 E. Marshall St., Suite G2 West Chester, PA 19380 610-431-0200

AUDUBON

Seton Center
950 Forge Avenue, Suite 200
(Trooper Rd. & Forge Ave.)
Audubon, PA 19403
610-431-0200

NEWTOWN SQUARE

3319 West Chester Pike
at Surrey Drive
Newtown Square, PA 19073
610-356-5911

EXTON

Main Line Health Center
at Exton Square
153 Exton Square Parkway
Exton, PA 19341
610-431-0200

HERSHEY'S MILL SERIES TRIPS

2014-2015 DuPont Theatre

Wednesday Matinee Series

Cost: \$14 (Individual Bus Fee) + Admission
Departs: 12:30pm
Contact: Ruth Sugar

The remaining performances we will be attending this year are:

April 15, 2015 – *Camelot* is the story of King Arthur's kingdom – its passion, pageantry, and betrayal.

May 13, 2015 – *Guys and Dolls* is set in Damon Runyon's mythical New York City. This oddball romantic comedy soars with the spirit of Broadway! Participants need to order program tickets on their own.

2014-2015 Walnut Street Theatre Series

Thursday & Saturday Matinees

Cost: \$40 per show
Departs: 12:30pm
Contact: Ruth Sugar (Thurs. shows)



Contact: Connie Cline (Sat. shows)

We are collecting names for the Wait List, as series subscribers often miss performances due to scheduling conflicts. Remaining dates and shows are:

Saturday 4/4/15

Agatha Christie's *And Then There Were None*

Thurs. 5/28/15 and Sat. 6/6/15
Memphis



Since 1977

Tried and True

to Heat & Cool

We are NOT your Run-of-the-Mill Home Pros
Depend on Daimion for a Hassle-Free-Home

- ☞ "Seniors" Value Pricing
- ☞ Emergency Service 24/7
- ☞ Factory-Trained Technicians
- ☞ Healthy Air Product Solutions
- ☞ Brand Name Selections
- ☞ Reliable Service Contracts

Call Us for a Free Estimate
610-644-0537

440 E. King Road • Malvern, PA 19355 www.daimion.com

SarahCare
DAYTIME SENIOR CARE & ACTIVITIES
610-251-0801

LOOKING FOR
affordable day care
FOR A LOVED ONE?

For the cost of 3 hours of home care, you can receive 6 hours of nursing services, delicious meals and engaging social activities at our SarahCare Day Center in Malvern.

AND BE HOME FOR DINNER!

CALL TODAY FOR A FREE TRIAL DAY Since 1985.



heating | air conditioning | geothermal

**Comfort, Safety, Savings
Dependable Service**

24/7

610-738-8310

www.Signaturehvac.com

**\$49 Precision
Tune Up**

**Free Diagnostic
With Any
Repair!**

**\$1000 OFF a Qualifying System
Installation**

*PLUS 0% Financing
For 36 Months*

**Call Today And
Take Advantage
Of Our**

Special Hershey's Mill Pricing



RESIDENT DIRECTORY CHANGES

Baker, Richard & Dorothea

Lyons, Agatha

Rothermel, Theresa, Steve
and Scott

(new #)

Davis, Gordon

Nagle, John & Rachel

Seeley, Suzanne & Franklin

DiCandilo, Angelo & Marie
(new #)

Reynolds, William &
Rosemarie

Viscidi, Alexander & Mary
(new #)

Ianelli, Nanette

(new #)



*Need another full copy of this HM
publication? They are exclusively available
to residents, for a fee, at the HMC-TV office.*

MADE EASY inc.

Deck Restoration

Established 1986, Fully Insured

DECKS

- Powerwashing
- Weatherproofing
- Staining
- Repairing
- Tear-down
- Rebuilding
- Resurfacing

CONCRETE

- Power-wash Concrete Patios
- Garage Floors Epoxy Coatings

PA Contractor's Register #068234

ASK
for the Special
Hershey's Mill
Discount

Hershey's Mill #1 Deck Restoration Company

- Over 2 Million Sq. Ft. Restored
- Over 600 Decks Restored in Hershey's Mill
- **PLUS** Community Pool Deck - tear down, rebuild & coat

Walking trail benches - rails - bridges and more

610-827-7420

INSURED & BONDED
FREE ESTIMATES

**IF YOU WANT THE BEST - FORGET THE REST
CALL MADE EASY, INC TODAY**

Stowers Handyman Service LLC

Home Maintenance & Repairs

- Carpentry
- Painting
- Drywall Repair
- Tile Grouting
- Tub Caulking
- Window Repair
- Furniture Moving
- Hand Rails Installed
- Floor Repair
- Kitchen Faucets

and lots more!

Resident handyman serving
all Hershey's Mill villages

Call Dan Stowers
484-467-3361

Fully Insured
Reg. # PA 061617



**10%
Discount
with
this ad**

DEL VACCHIO

LANDSCAPE & GARDEN CENTER



- Landscape & Hardscape Services
- Design & Installation
- Mulch Delivery & Installation
- Annuals, perennials, hanging baskets and vegetable plants

Located between
Greenhill Rd & Paoli Pike
PAHIC #5435

Landscape & Garden Center
Landscape Design & Maintenance
Holiday Décor
922 North Chester Road
East Goshen, PA 19380
Phone: 610-692-2422
www.delvacchio.com



Move to Freedom Village, and you'll move on to "Five-star" healthcare.

Freedom Village at Brandywine is the best of both worlds – the convenience and amenities of communities such as Hershey's Mill but now with FIVE-STAR healthcare. We deliver exceptional Independent Living, Assisted Senior Living, Alzheimer's and Dementia Care and Skilled Nursing Care options for you or your loved ones.

We're located in historic Chester County, adjacent to the Brandywine Hospital and its comprehensive medical services. Plus, you'll be minutes away from shopping, theaters, fine dining options and the Applecross Country Club golf course.

Within our community, you'll find woodworking and billiards, aerobics, gardening, indoor swimming and educational events.

We're proud to provide FIVE-STAR healthcare with a high quality of life and the highest levels of care and caring.

**Call 1-866-287-3072 to arrange a tour, meet our residents,
have lunch or dinner and see our brand new renovations.**



Freedom Village Brandywine
A Life Care Community
15 Freedom Boulevard
West Brandywine, Pennsylvania 19320

brookdale.com



Brookdale® and ALL THE PLACES LIFE CAN GO™ are trademarks of Brookdale Senior Living Inc., Nashville, TN, USA. © Reg. U.S. Patent and TM Office. 14-71181-2359-1115-L8

**John S. Rice
JEWELER
INC.**

- Custom Jewelry Design
- Re-mounting
- Repairs performed on-premises
- Appraisals

*10% off all new purchases
to residents of Hershey's Mill*

FRAZER SHOPPING CENTER
BUSINESS RT. 30 • FRAZER, PA 19355
610-647-6168

MacLaren

Kitchen and Bath

Countertop Replacements In One Day!

Visit our Showroom For:
Granite, Corian, and Quartz
Cabinet Design and Sales
Tile Backsplashes
Sinks and Faucets

We're Just Around the Corner

Monday- Friday 8am- 4:30pm
Saturday 10am-2pm

610-436-5436
www.maclarenfab.com
1135 Phoenixville Pike West Chester, PA

Gay Barry | Quaker

Have you always been intrigued by the name Duling-Kurtz as I have been? It conjures up mind pictures for me – mainly “dueling Kurds.” *Touché!* But then, of course, that is not it at all. The Duling-Kurtz House is named for Edith Duling Carr and Lena Kurtz Knauer, mothers of the founders of the Inn. The Inn sits on land that was an original land grant from William

Austria. “Working in the finest of Europe’s great restaurants and hotels is your assurance of excellent service and superb food.”

The Duling-Kurtz House is the recipient of several prestigious awards including the AAA Four Diamond Award for excellent cuisine, excellent

(610) 524-1830
146 Whitford Road, Exton

Duling-Kurtz House & Country Inn

Penn to Richard Thomas; whose son in 1712 claimed 2,000 acres of the land grant. In the 1830s this land included grist and saw mills, mill pond and race, two lime kilns, and limestone quarries. The old stone house, the dwelling place for the owner George Hoopes and his wife, is now the Duling-Kurtz House. You can read more about the colorful history of this historic building, and those who dwelled within, in a brochure available at the Inn; published by Michael and Gertie Person, the proprietors.

Duling-Kurtz House & Country Inn continues the tradition of providing history, charm and hospitality for which Chester County has become known. The Persons, proprietors, received formal training in Vienna,

service and elegant dining; the *Wine Spectator* Award of Excellence; and the *Main Line Today* award as best restaurant in Chester County.



Executive Chef Damian A. Gould takes pride in his American and continental cuisine “prepared to order from only the finest ingredients.” Some items can be found on both the lunch and dinner menus, so consider trying this restaurant for lunch first for more value. Appetizers, soups, sandwiches,

salads, entrées and dessert are available for lunch. The same for dinner, except that sandwiches are not available. The fare is hearty, with several dishes that are imaginative. Two such are the grilled octopus with fennel, grapefruit, olives and frisée; and the alliga-



Belgian chocolate mousse, cappuccino ice cream truffle, raspberry Linzertorte, and the chef recommended chocolate peanut butter lava cake baked to order. Oh so yummy and oh so filled with calories, but who can resist?

There are eight uniquely furnished, elegant dining rooms; several featuring a fireplace. The historic nature of the house lends charm to every room as well as a lovely warm ambience. Consider this a treat for special occasion dinners such as an anniversary. Enjoy gracious dining and warm hospitality in this unique historic inn and restaurant.

tor pan seared with porcini mushrooms, roasted garlic, grilled polenta and red wine sauce. Two of the many appetizers offered are shrimp/lobster bisque with crème fraiche garni, and wood roasted French onion soup.

There is a diverse selection of salads to satisfy almost anyone. There is an extended choice of entrées, rather amazing for the time in which we live. Some interesting items are pan seared Bronzino; *wiener schnitzel*, a classic Austrian dish; oven braised pheasant; roasted Long Island duck; lemon grass pepper glaze short ribs; and several beef choices.

The dessert selection is over the top – fourteen in all. Cheese strudel, dark



Duling-Kurtz is open for lunch Tuesday through Friday from 11:30am to 3pm, and Saturday from noon to 3pm. Dinner is Monday through Saturday from 5pm to 10pm, and Sunday from 4pm to 9pm. You may also be interested in Friday night when live music is featured from 6pm to 9pm.

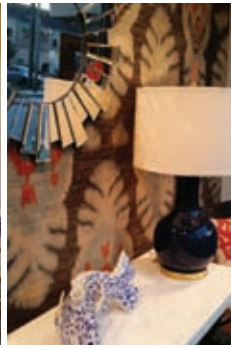
Spring is a lovely time to go when beautiful plantings are all in bloom.

Photos courtesy of Duling-Kurtz House

KNOTS & WEAVES

DECORATIVE RUGS • HOME DECOR

FOLLOW OUR STEPS
to finding eclectic home decor, including:



Vintage · Antique
Handcrafted · Art
Fashion · Jewelry
Estate Finds and
Monogrammed Gifts!

AWARD WINNING
selection of handwoven
wool area rugs to meet
every budget.
+ in home design services



RUG CLEANING!
Customers are shocked at how
great they look... like NEW!



WE WILL BUY YOUR... Rugs, Art, Ceramics, Furniture,
Antiques, Glassware, Figurines, Jewelry, Coins and more...

FREE PICKUP + DELIVERY (within a 10 mile radius
Prices are based on size)

610.644.9192

218 East King Street | Malvern, PA

www.knotsandweaves.com



Franklin Auto Spa

Premium service to
help protect the life
and look of your car.

Wednesdays are LADIES DAY!
25% off ANY CAR WASH

Washes:

Lightning Strike - \$24 (incl. tax)

Take Flight Wash + - Durashield® U.V. Protectant
- 72 Hour Guarantee - Lava Wax Polish

Take Flight - \$20 (incl. tax)

Turn Key Wash + - Tire Shine
- Triple Spot Free Rinse - Colorcoat® Triple Foam
- Durashield® U.V. Protectant

Turn Key - \$17 (incl. tax)

Ben's Basic Wash + - Guard Dog® Undercarriage
- 2 Step Wheel Cleaning

Ben's Basic - \$14 (incl. tax)

Exterior Wash + - Interior Vacuuming
- Dash Wiped Clean - Windows Cleaned
- 1 Step Wheel Cleaning

Exterior Wash - \$9 (incl. Tax)

- Exterior Wash - Towel Dry



**Tuesdays
SENIOR DAY!**
50% off
Any Wash

535 Lancaster Ave.

Frazer, PA 19355

Phone: (610) 296-9000

www.franklinautospa.com

HM LIBRARY NEWS

Donna Spoto | Ulster

The library will be making room for our annual Book Sale Saturday and Sunday, September 11 and 12 at the Community Center. We continue to sell some of our older books for \$1, and these can be found on the rolling cart as you enter the library. Please continue to support the library by becoming a "Friend." For a yearly donation of \$5 or more you can become a Friend and attend the book sale preview reception on Friday, September 10th. Please bring your gently

Community Center Library Hours

Monday to Friday 10am-2pm

Saturday 10am-Noon

www.hmlibrary.com

NEW LIBRARY BOOKS

Peggy McReynolds | Yardley Librarian

Alphabetical by Author

Alcott, Kate – *Touch of Stardust*

Allen, Sarah Addison – *First Frost*

Berenson, Alex – *Twelve Days*

Blaedel, Sara – *Forgotten Girls*

Davis, Brooks – *Lost and Found*

Ellison, Jan – *Small Indiscretion*

Fuller, Alesandra – *Leaving Before Rain Comes*

Gardner, Lisa – *Crash & Burn*

Greenland, Seth – *I Regret Everything*

Hannah, Kristin – *Nightingale*

Harrison, Mette Ivie – *Bishop's Wife*

Hawkins, Paula – *Girl on the Train*

Henry, Patti – *Stories We Tell*

Hepworth, Sally – *Secrets of Midwives*

Hoag, Tami – *Cold, Cold Heart*

Hooper, Emma – *Etta and Otto and Russell and James*

LaSalle, Peter – *What If I Found Out About Her*

Le Craw, Holly – *Half Brother*

Meissner, Susan – *Secrets of a Charmed Life*

Patterson, James – *Private Vegas*

Todd, Charles – *Fine Summer's Day*

Treuer, David – *Prudence*

Tyler, Anne – *Spool of Blue Thread*

Unger, Lisa – *Crazy Love You*

Walsh, M.O. – *My Sunshine Away*

Zakaria, Rafia – *Upstairs Wife*



Find a favorite book and a cozy spot at the HM Library!

used books to the library as we are accepting donations for the sale at this time.

New acquisitions are processed monthly and are available around the last week of the month. Our website is updated monthly and you are able to see all the wonderful books in our library.

Perhaps no place in any community is so totally democratic as the town library. The only entrance requirement is interest. – Claudia Alta Johnson

We Are NOT Happy, Unless YOU Are!

A to Z
APPLIANCE REPAIR

610-431-3338

Fully Certified & Insured LLC with 30 Years of Experience

Count on Us to
Provide Low Prices, Rapid
Response & Service on
All Major Brand Appliances

- Refrigerators
- Dishwashers
- Microwaves
- Ranges
- Ovens
- Washing Machines
- Dryers
- Freezers

Kevin Free

"the ultimate handyman"



General Home Repair

Painting/Wallpapering (including decorative) • Carpentry • Power Wash/Stain Decks
Minor Electrical • Tile Work • Masonry • and Much More

"No job is too small"

610-613-0928

Free Estimates

email: dkevinfree@aol.com

Senior Discounts

Conveniently located in Malvern, PA

CALMON PATIENT ADVOCATE
JULIETA CALMON



PATIENT ADVOCATE

(484) 802 1055

CALMONPATIENTADVOCATE.COM

CONTACT@CALMONPATIENTADVOCATE.COM

- RETIRED PHYSICIAN
- PROVIDES INDIVIDUALIZED CARE TO MEET SPECIFIC NEEDS
- ACCOMPANIES PATIENTS TO DOCTOR'S APPOINTMENTS
- HELPS COORDINATE POST-HOSPITAL CARE
- REVIEWS MEDICATIONS
- SPEAKS ENGLISH, PORTUGUESE & MEDICAL SPANISH



Oliver Provides Fast, Reliable, Expert Service! If It Breaks, We Fix It.

For Superior Service and Comfort You Can Trust, call Oliver today!

- Heating
- Plumbing
- Cooling
- Electrical

610-616-5691
OliverHeatCool.com



Get a Taste of Healthy Living at Riddle Village.

When you talk with senior adults about the quality of life at a retirement community, dining is always near the top of the list. Why? Well-prepared, healthy and tastefully presented menu options are part of the joy of living – and part of every day life at Riddle Village.

With a variety of on-site venues, including the newly renovated Garden Terrace, wholesome and delicious menu choices make dining at Riddle Village a healthy, relaxing, and highly enjoyable experience.

See for yourself. **For more information, and a personal tour, please call today: (610) 891-3700**

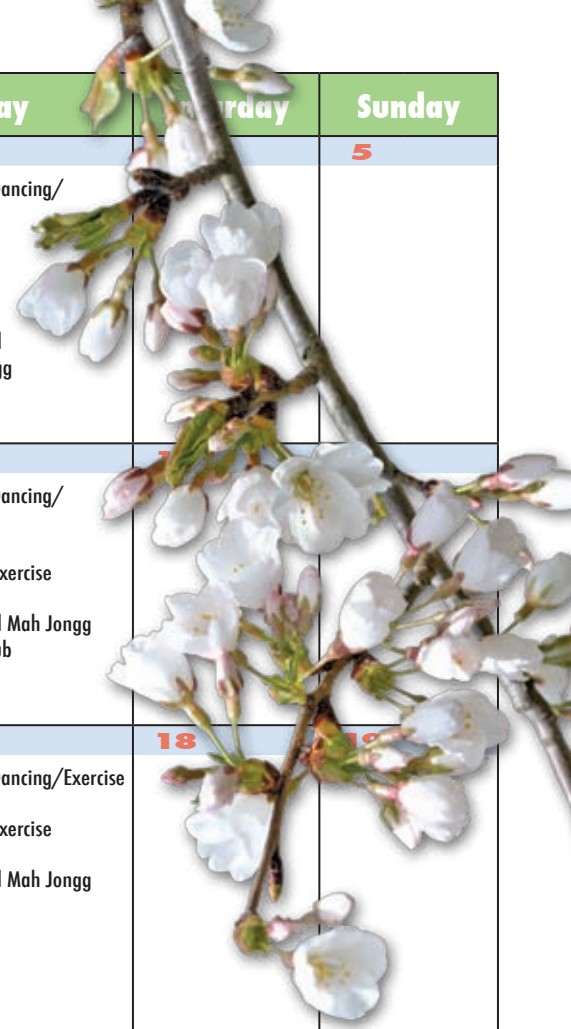


1048 West Baltimore Pike • Media, PA 19063 • (610) 891-3700 • www.riddlevillage.org



MAG/HMGD/11-14

| Monday | Tuesday | Wednesday | Thursday | Friday | Saturday | Sunday |
|--|---|--|---|---|--|---|
| <p><i>It has been said that, at its best, preservation engages the past in a conversation with the present over a mutual concern for the future. – William Murtagh</i></p> | | <p>1</p> <p>7:30am Men's Bible Study 8:30am Aerobic Dancing/Exercise 9:30am Intermediate Bridge Lesson 10:00am Ageless Exercise 12:00pm Art Group 12:30pm Social Club Bridge 12:30pm Billiards 1:00pm Dominoes 7:00pm Casual Singing Group 7:30pm Mah Jongg</p> | <p>2</p> <p>10:00am Alzheimer/Dementia Support Group 10:00am Yoga 12:30pm Billiards 1:00pm (SH) Chess Club 1:00pm Knitting Circle 2:00pm Card Games 6:30pm Poker 7:00pm Quaker Open 7:00pm Stress Management Class</p> | <p>3</p> <p>8:30am Aerobic Dancing/Exercise 10:00am Quilters 10:00am Ageless Exercise 12:30pm Billiards 1:00pm Pickleball Mah Jongg</p> | | <p>5</p> |
| | | <p>6</p> <p>8:30am Aerobic Dancing/Exercise 10:00am Ageless Exercise 12:00pm (SH) Circle Of Friends 12:30pm Mah Jongg 12:30pm WH Duplicate Bridge 3:00pm Bridge 7:00pm WH Duplicate Bridge</p> | <p>7</p> <p>1:00pm Pinochle 1:00pm Mah Jongg 1:30pm Mah Jongg 3:00pm (SH) Railroad Club</p> | <p>8</p> <p>7:30am Men's Bible Study 8:30am Aerobic Dancing/Exercise 10:00am Ageless Exercise 12:00pm Art Group 12:30pm Billiards 1:00pm Dominoes 7:30pm Mah Jongg</p> | <p>9</p> <p>10:00am Yoga 11:30am Mermaid Book Club 12:30pm Billiards 1:00pm (SH) Chess Club 1:00pm Knitting Circle 2:00pm (SH) Books Discussion 2:00pm Card Games 6:30pm Poker 7:00pm Stress Management Class</p> | <p>10</p> <p>8:30am Aerobic Dancing/Exercise 10:00am Quilters 10:00am Ageless Exercise 12:30pm Billiards 1:00pm Pickleball Mah Jongg 2:00pm Rummikub</p> |
| <p>13</p> <p>8:30am Aerobic Dancing/Exercise 10:00am Ageless Exercise 12:00pm (SH) Circle Of Friends 12:30pm Mah Jongg 12:30pm WH Duplicate Bridge 3:00pm Bridge 7:00pm WH Duplicate Bridge</p> | <p>14</p> <p>8:30am AARP Driver Safety Course 1:00pm Pinochle 1:00pm Mah Jongg 1:30pm Mah Jongg 3:00pm (SH) Railroad Club 6:30pm Open Bunco 7:00pm PC Computer Club 7:00pm (SH) Great Books Club</p> | <p>15</p> <p>7:30am Men's Bible Study 8:30am Aerobic Dancing/Exercise 9:30am Intermediate Bridge Lesson 10:00am Ageless Exercise 12:00pm Art Group 12:00pm Social Club Bridge 12:30pm Billiards 1:00pm Dominoes 7:00pm Yardley Open 7:30pm Mah Jongg</p> | <p>16</p> <p>8:30am AARP Driver Safety Course 10:00am Yoga 12:30pm Billiards 1:00pm (SH) Chess Club 1:00pm Art Appreciation 1:00pm Knitting Circle 2:00pm Card Games 6:30pm Poker 7:00pm Inverness Open 7:00pm Stress Management Class</p> | <p>17</p> <p>8:30am Aerobic Dancing/Exercise 10:00am Quilters 10:00am Ageless Exercise 12:30pm Billiards 1:00pm Pickleball Mah Jongg</p> | <p>18</p> | <p>19</p> |
| <p>20</p> <p>8:30am Aerobic Dancing/Exercise 10:00am Ageless Exercise 12:00pm (SH) Circle Of Friends 12:30pm Mah Jongg 12:30pm WH Duplicate Bridge 3:00pm Bridge 7:00pm WH Duplicate Bridge</p> | <p>21</p> <p>1:00pm Pinochle 1:00pm Mah Jongg 1:30pm Mah Jongg 3:00pm (SH) Railroad Club 7:00pm Investment Club</p> | <p>22</p> <p>7:30am Men's Bible Study 8:30am Aerobic Dancing/Exercise 10:00am Ageless Exercise 12:00pm Art Group 12:30pm Billiards 1:00pm Dominoes 7:00pm Chatham Open 7:30pm Mah Jongg</p> | <p>23</p> <p>10:00am Yoga 12:30pm Billiards 1:00pm (SH) Chess Club 1:00pm Art Appreciation 1:00pm Knitting Circle 2:00pm Card Games 6:30pm Poker 7:00pm Stress Management Class</p> | <p>24</p> <p>8:30am Aerobic Dancing/Exercise 10:00am Quilters 10:00am Ageless Exercise 12:30pm Billiards 1:00pm Pickleball Mah Jongg 2:00pm Rummikub 7:00pm Bingo</p> | <p>25</p> <p>10:00am Mac Group</p> | <p>26</p> <p>SH is Sullivan House. Dates and times subject to change. Contact program leader for details.</p> |
| <p>27</p> <p>8:30am Aerobic Dancing/Exercise 10:00am Ageless Exercise 12:00pm (SH) Circle Of Friends 12:30pm Mah Jongg 12:30pm WH Duplicate Bridge 3:00pm Bridge 7:00pm WH Duplicate Bridge</p> | <p>28</p> <p>1:00pm Pinochle 1:00pm Mah Jongg 1:30pm Mah Jongg 3:00pm (SH) Railroad Club 7:00pm Devonshire Open 7:00pm (SH) Great Books Club</p> | <p>29</p> <p>7:30am Men's Bible Study 8:30am Aerobic Dancing/Exercise 10:00am Ageless Exercise 12:00pm Art Group 12:30pm Billiards 1:00pm Dominoes 7:30pm Mah Jongg</p> | <p>30</p> <p>10:00am Yoga 12:30pm Billiards 1:00pm Art Appreciation 1:00pm Knitting Circle 2:00pm Card Games 6:30pm Poker 7:00pm Stress Management Class</p> | <p>April 2015 Activities Calendar</p> | | |



**We Specialize in Making
Our Customers Happy!**

**CORDES
CONTRACTING**

40 Years of Experience & Craftsmanship

**Proud
10 Year
Resident!**

- An Expert in
Paint, Drywall
& Carpentry

- No Job Too Small or Too Large

- Proud to be the Contractor
of Choice at Applebrook
Golf Club

**Tim Cordes
610-209-7268**

Featuring Hunter Douglas & Other Manufacturers

BLINDS 4 U

610-246-3100

**Shop At Home Service for Hershey's Mill.
We Will Beat Any Printed Installed Price!**



- Silhouettes
- Luminettes
- Pleated & Honeycomb Shades
- Duettes
- Country Wood Blinds
- Plantation Shutters
- Mini Blinds
- Verticals
- Roman Shades

**Free Quotes ❖ Measuring ❖ Installation
Bottom line pricing all the time!**

Quality care you deserve, close to home.

When it comes to your family's health, you can trust the care of Paoli Hospital. We've grown from a seven-room facility to the County's only trauma center, investing in new facilities and technology and expanding our services and staff to meet your needs.

Our dedication to patient safety and excellence has been recognized by some of the nation's leading health care standards-setting organizations. We're proud to be the only hospital in the County with accreditations in *all* of the following:

**Breast Cancer Care • Chest Pain • COPD • Hip and Knee Replacement
Sleep Disorders • Stroke • Trauma**

With many of our physicians and services available at the Main Line Health Centers in Collegeville and at the Exton Square Mall, quality care has never been more convenient.

1.866.CALL.MLH
mainlinehealth.org/paoli



Paoli Hospital
Main Line Health®

Well ahead.®



Membership on the medical staff of a Main Line Health hospital does not constitute an employment or agency relationship.



**SENIORS
HELPING
SENIORS**
...a way to give and to receive®

Our loving, caring, compassionate seniors are there to help. We offer all the services you need to stay in your own home, living independently.

www.heart4helpingseniors.com

**Like getting a little help from your friends.®
Call us today! (610) 590-4888**

- Companionship
- Light Housekeeping
- Meal Preparation
- Overnight Stays (24-hour Care)
- Dementia/Alzheimer's Care
- Respite Care
- Personal Grooming and Dressing
- Transportation



HEATING & AIR CONDITIONING

*We Have Certified 24/7 Technicians
On Call for Your Home Emergencies*

Sales • Service • Installation • GeoThermal

**Serving West Chester
for 4 generations as your
neighborhood contractor.**

**HM Residents - Mention this ad and
receive 10% off new service contracts!
Ask about rebates, credits & financing.**

610-692-5252
www.brewersheatandair.com

Plumbing Services
Available
Now

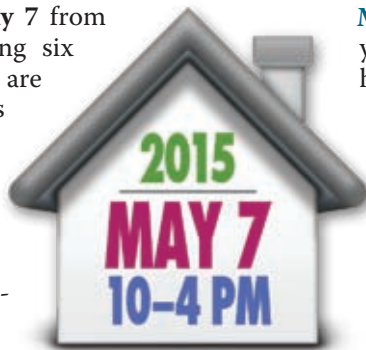
AARP DRIVER SAFETY COURSE

The AARP Driver Safety Course will be offered at the Community Center on **Tuesday, April 14** and **Thursday, April 16** from **8:30am to 12:30pm**. If you wish to join the class, register at the Community Center Office between 8am and 10am any weekday morning. The cost is \$15, payable at registration. If you have any questions, please call the Community Center at ; we'll be glad to help you.

2015 HERSHEY'S MILL SHOWCASE OF HOMES FOR THE BENEFIT OF PAOLI MEMORIAL HOSPITAL

Judy Krischker | Springton

Spend **Thursday, May 7** from **10am to 4pm** visiting six lovely homes that are open in Hershey's Mill. Be sure to take time to stop by the Community Center where there will be boutique vendors and raffle baskets. Luncheon will be available at the HM Golf Club at an additional cost. Tickets are \$25 and are available at the Community Center from 11am to 1pm on March 31 and April 1, 2, 7, 8, 9, 14, 15, 16, 21, 22, 23, 28, 29 and 30. Tickets will also be on sale at the HM Golf Club from 4:30pm to 6:30pm on April 3, 10, 17 and 24. Or tickets can be ordered by calling Yvonne Carter at (or her cell-phone at) or Betty Ann McArdle at . Chances for "A Night to Remember at The General Warren Inn," which includes dinner, an overnight stay in a lovely room and breakfast, will also be for sale.



POOL NEWS

Carol Campanelli | Ulster

Orientation Brunch. To be held at Roger's on Boot Road on **Tuesday, May 5**, from **10am to 11:30am**. To RSVP, contact Carol at or

Volunteers Needed. Volunteer at the Pool sign-in table and as helpers for our parties. Our Orientation Brunch is a great opportunity to meet other volunteers and learn about the opportunities for helping at the Pool. If you have questions or want to attend the brunch, contact Carol at or

Pool Opens On Saturday, May 23.

Starting at noon, you can pick up your free hot dog, drink, and chips and enjoy getting reacquainted with your Hershey's Mill neighbors. This season will have **new pool hours from 10:30am to 7:30pm**. Check out the Pool insert in the *May Guide and Digest* for complete information including other changes that will enhance everyone's use of the pool.

Pool Events. The Volunteers and Events Committee has scheduled exciting summer events. HMC-TV Channel 20, the *Guide and Digest*, and the Pool Bulletin Board will have details, changes, and additions as needed to the below.

Larry Mckenna – June 17 (rain date June 18). Food, music and dancing around the Pool. Tickets go on sale Memorial Day weekend.

Tom Barrett – Fourth of July (rain date July 5). His annual USO and Wounded Warriors benefit event.

Girls Night Out – August 4 (rain date August 5).

Death Of Summer – September 5 (rain date September 6). Close out the season in New Orleans' style.



THANKS TO SALLY SHABAKER

Louise O'Brien | Springton

Sally Shabaker, my friend and fellow volunteer at HMC-TV, will no longer be writing the Getting To Know You articles in the *Guide and Digest* after this month. This will surely be sad news for her multitude of fans throughout the Mill. For over five years, Sally has provided each of us a unique glimpse into the lives of the wonderful people that we call friends and neighbors.

I met Sally at a local fitness club and learned that she had been a professional writer in the Atlanta area. I couldn't resist the temptation to ask if she would write for the *Guide and Digest*, and was so pleased when she said "yes." Sally has graced us with her professional approach and style for more than 60 articles – a remarkable run that is so appreciated!

Sally has decided to pare down her "to do" list and focus on some other projects, but you will continue to see her



active and smiling at many other clubs and activities throughout the Mill. I can speak for all her fans in wishing her well in her other endeavors, although I must say a part of me hopes she will one day again provide a smile with her writing for the *Guide and Digest*.

LEE MCCARTHY

Don Trauger | Kennett

It's with sadness that HMC-TV reports that Lee McCarthy suddenly passed away on Sunday, March 8, 2015. Lee lent his professional expertise to guide us as a member of the HMC-TV Board of Directors. He also developed and scheduled our video programming with the Program Committee and performed many in-depth interviews with our TV guests.

His overall interest in TV programming helped Channel 20 achieve a high standard that is difficult to match. Lee will be greatly missed by the staff at Channel 20.

SPORTS GROUP

Reade Nimick | Lincoln

Hard to believe, but Spring is finally here – or at least close by! This is written in February, because of magazine lead time, when the prediction for the

Continued on page 41

RICHARD. J. EGAN PAINTING CO.

The Superior Craftsmen ... We are Painting Specialists

Look at Princeton, Glenwood, Oakmont, Ashton, Robynwood, & Ulster Villages, & Sullivan House
Ask Their Maintenance and Architectural Committees About Us

INTERIOR & EXTERIOR PAINTING • WALLPAPER HANGING
DETAIL SPECIALISTS • REPLACEMENT WINDOWS • CUSTOM CARPENTRY
POWER WASHING • WATERPROOFING DECKS • FULLY INSURED

Brushing and Rolling are Best! ...Spraying upon Request

FREE ESTIMATES Call: 610-353-3570

PIANO LESSONS

KEYBOARD/PIANO LESSONS IN YOUR HOME
LEARN TO PLAY THE SONGS THAT YOU LOVE
BEGINNERS TO ADVANCED LEVELS

CALL JAY CHADWICK
610.220.4907
MUSICZONE1@AOL.COM

Zagat Guide 2013

*"Old World Charm..
Top Notch Service"*

General Warren Inne
since 1745

General Warren Inne

American Cuisine
Private Party Rooms
Live Music in Tavern
Elegant Guest Suites

9 Old Lancaster Rd Malvern, PA
610-296-3637
www.generalwarren.com

15% Food Discount at Lunch
for all Hershey's Mill residents
11:30am - 2:30pm Mon - Fri

O'Brien
Heating & Air Conditioning
O'Comfort

60 YEARS OF "O'MAZING" SERVICE

- Fast Emergency Service -
- Service Agreements -
- Custom Installation -
- Water Heater Replacement -
- Duct Cleaning & Attic Insulation -



Call 610.696.7143
www.ocomfort.com

COMMUNITY NEWS (continued)

next few days is anywhere from 20°F to -1°F; so that first sentence provides its own warmth. It won't surprise you then, that there has been little outdoor activity – unless you've been hearty and strong on the Paddle court or needed to take the dog for a walk. Or perhaps you have taken advantage of the indoor Pickleball facilities at one of the nearby sports clubs.

Our Hershey's Mill outdoor activities, like Tennis, Pickleball, Bocce, Horseshoes and Shuffleboard, will now ramp up. Perhaps the Paddle courts will continue to see action for a while also. And of course, Ping Pong is available at certain days/hours in the

Community Center. Be sure to check the Bulletin Board at the tennis courts for announcements regarding all activities and events. The March edition of the *Guide and Digest* included information on Bocce plans for the spring and summer. Hooray for warm weather!



Wellington
at HERSHEY'S MILL

For the Lifestyle You Deserve...

- Resort-style living in a retirement community with a continuum of care available
- Superior accommodations & amenities – Parking garage included
- Wide selection of independent apartments with balcony or patio and personal care suites. Private rooms for skilled nursing & rehab which was awarded a FIVE-STAR RATING!
- Owner managed, locally owned
- No Entrance Fee or Community Fee

For more information call 484-653-1200
www.wellingtonretirement.com

 1361 Boot Road (Boot Road & Carriage Drive) • East Goshen • West Chester, PA 19380 

Judy Molt | Yardley

As the spring flowers are getting ready to break through the soil and show their blooms, it seems appropriate to update the residents of Hershey's Mill about all that is blooming at the Sullivan House. The grand old lady that sits at the top of the hill offers a beautiful setting where residents and their guests can meet, recreate, and entertain while enjoying the beauty of Hershey's Mill. This past year was a decisive one that marked the beginning of a new direction for Sullivan House.

In conjunction with the Master Association Board of Directors, the Sullivan House Committee developed a Mission Statement and Action Plan to assure the preservation of its historic nature, increase community recognition, and expand utilization so it can become more self-sustaining.

The following are highlights of the Sullivan House Committee's Goals and Actions of the past year:

Preserve the Historic Nature of Sullivan House

- Work with the Township to discover deeds, covenants and historical status for Sullivan House.

Representatives of the Sullivan House Committee have worked with the East Goshen Historical Advisory Board to secure a more accurate history of Sullivan House by reviewing deeds, structural adaptations and its historical significance.



- Create a Master List of required repairs, recurring maintenance items, renovations and restorations.

A list of such has been prepared by the Sullivan House Maintenance Team. Re-mortaring of wall and capstone seams on terrace and patio has been completed. The Sullivan House Maintenance Team has restored damaged windows, made repairs to

the plumbing and heating systems for added efficiency, and installed additional handrails as needed. A plan was generated, approved, and bids have been received to raise the first floor powder room floor to make it more convenient and accessible. On January 27, 2015, an application for this renovation was submitted to PA Licenses & Inspections.

Establish "Friends of Sullivan House" (FoSH)

- The Sullivan House Committee established the FoSH in October 2014. The Core Working Committee of FoSH is a group of energetic residents whose goal is to raise funds to support and increase community awareness and utilization of the Sullivan House.

- They held a successful kick-off raffle at the Sullivan House Holiday Open House in December 2014.

- 2015 fund raising events include: a raffle for a Gourmet Dinner with Wine Pairing for ten people, and a Monte Carlo Night at the Sullivan House.



clubs (such as the Boomers Book Club, Bus Club, Village Social Clubs, and FoSH) are meeting at Sullivan House.

- An increase in the number of parties, from 36 in 2013 to 43 in 2014, has been achieved.

- The Sullivan House Committee hosted a reception for Village Presidents in October 2014.

- WiFi capability has been installed with assistance from HMC-TV Channel 20.

A Year In The Life Of Sullivan House

Increase Usage for Hershey's Mill Meetings, Activity Clubs and Parties

- Accessibility has been made easier by having the front door unlocked during the day.
- Surveillance cameras are being installed.
- Guidelines for food and drink use at scheduled meeting have been developed.
- The Committee, residents, and others have provided Sullivan House articles in the HMC-TV *Guide and Digest* at Hershey's Mill. With increased exposure, Village Councils and additional

Develop a Strategy and Marketing Plan to Increase Usage and Rental Revenue

- A contract with Brandywine Caterers was approved making them the exclusive caterer for "non-resident" parties. Brandywine Caterers is marketing and promoting Sullivan House as a preferred venue for events.
- An agreement with Hershey's Mill Golf Club to refer groups they cannot accommodate has been reached.
- A Marketing Committee has been established. Marketing for both

Continued on page 45

ENTER
FOR YOUR
CHANCE
TO WIN!



TICKETS
ON SALE
NOW!

FUNDRAISER RAFFLE

Gourmet Dinner with Wine Pairing

Winner will enjoy...

- **What:** Dinner for you and nine (9) of your guests
- **Where:** The Historic Sullivan House, Hershey's Mill, West Chester
- **When:** Date of your choice before 12/31/15
- **Hosted by:** FoSH (Friends of Sullivan House)
- **Catered by:** Brandywine Catering
- **Cost of Ticket:** \$30.⁰⁰
- **Drawing:** At the Hershey's Mill Summer Concert Series on June 14, 2015 (Raindate: 6/28/15)

Winner does not need to be present at drawing to win. Checks payable to: Sullivan House Fund
All proceeds go to support the preservation of Historic Sullivan House



For info and to buy tickets...

Shauna Flynn at

or Ann Gunn

SULLIVAN HOUSE (continued)

internal and external events is a top priority for 2015.

- A point person has been chosen to update and maintain the Sullivan House section of the HersheysMill.org website.
- The Marketing Committee is working with an advertising

agency to develop a domain name and website for public use to target more external events.

The past year was eventful for Sullivan House. The changes in the daily operation of Sullivan House have and will result in more residents' awareness, access and enjoyment. In order to maintain this pace, the Sullivan House Committee cannot work alone. It will take "the Villages," management and leadership to work together with flexible minds and spirits. The Committee is grateful for the support and guidance received from the Board of Directors/Master Association and residents. Thank you.

*Sullivan House – Once Discovered,
Never Forgotten*



SURREY

Services for Seniors

The Leader in Senior Care

Home Health Care

In-Home Services

Health & Wellness Programs

Housekeeping

Transportation

A non profit organization
serving the community
for 33 years.



610-647-9840 • www.surreyservices.org

| Original Programming | April 1-15, 2015 | | | |
|---|-------------------------|---------|---------|----------|
| Apple Products - Part 1 <i>With Carol Campanelli</i> Carol, Chair of the Apple Computer Club, interviews experienced Apple user Bob Barton about the Mac Users Group newsletter and magazines. | 10:00 am | 4:00 pm | 7:00 pm | 12 am |
| Apple Products - Part 2 <i>With Carol Campanelli</i> Bob and Carol discuss connecting an iPad and its settings. | 10:15 am | 4:15 pm | 7:15 pm | 12:15 am |
| Apple Products - Part 3 <i>With Carol Campanelli</i> Bob Barton has more on iPad settings. | 10:30 am | 4:30 pm | 7:30 pm | 12:30 am |
| Apple Products - Part 4 <i>With Carol Campanelli</i> Bob Barton concludes the series with a discussion of media apps. | 10:45 am | 4:45 pm | 7:45 pm | 12:45 am |

| Original Programming | April 16-30, 2015 | | | |
|---|--------------------------|---------|---------|----------|
| Purple Martin Migration - Part 1 <i>With Charlie Vogel</i> Charlie interviews Bob Lange, who has been tracking the habits of purple martins for years. | 10:00 am | 4:00 pm | 7:00 pm | 12 am |
| Purple Martin Migration - Part 2 <i>With Charlie Vogel</i> Charlie winds up his conversation with Bob Lange. | 10:15 am | 4:15 pm | 7:15 pm | 12:15 am |
| Bridge Tips - Part 1 <i>With Patricia Flanagan</i> John Marks, Director and Teacher for the HMGC Bridge Association, will discuss "Opening Bids." | 10:30 am | 4:30 pm | 7:30 pm | 12:30 am |
| Bridge Tips - Part 2 <i>With Patricia Flanagan</i> Continued discussion of "Opening Bids." | 10:45 am | 4:45 pm | 7:45 pm | 12:45 am |

| | | | |
|---|--|--|--|
| Movies Noon <i>and</i> 8:30pm | April 1-7 Beautiful (PG-13) <i>Minnie Driver and Hallie Kate Eisenberg</i> Mona's only goal in life is to win America's top beauty pageant and nothing, including being a secret mom, will stop her. [Run time 1h52m] | | |
| | April 8-15 Goin' South (PG) <i>Jack Nicholson and Mary Steenburgen</i> A horse thief is saved from the hangman's noose by marrying a local spinster. [Run time 1h48m] | | |

| | | | |
|---|--|--|--|
| Movies Noon <i>and</i> 8:30pm | April 16-23 The Rainmaker (PG-13) <i>Matt Damon and Claire Danes</i> A Memphis law graduate aids a battered wife and fights a lawyer for insurance for a dying man. [Run time 2h15m] | | |
| | April 24-30 A Day In The Life Of Hershey's Mill <i>Hershey's Mill Players</i> A story about a typical day in the life of HM residents as narrated by two nosey, friendly crows flying around the Mill's neighborhoods. [Run time 2h28m] | | |

| | | | |
|-----------------------|----------------|---------------|------------------------------------|
| Bulletin Board | 1:00am-10:00am | 11:00am-Noon | Following the movie until 4:00pm |
| | 5:00pm-7:00pm | 8:00pm-8:30pm | Following the movie until Midnight |

HMC-TV Channel 20 reserves the right to make program substitutions, and all dates and times are subject to change. The expressed opinions of reporters, guests, or advertisements in this publication or in any Channel 20 telecast shall not be construed as an endorsement by HMC-TV Channel 20. ©2015 HMC-TV

To view Channel 20's Original Programming on your computer:

Go to www.hersheysmill.org, choose "Original Programming" from the "HMC-TV20" tab, then click "TV Original Programming".

To view or print the HM TV channels listing:

Choose "Cable TV Line-up". A listing is available for both the basic channel lineup as well as the complete Comcast channel lineup.



Ad deadline is the 22nd and runs two months at no cost (due to lead time, an ad received on January 22 would start in the March edition, etc.). Limit description to 30 words per item, and include pricing and contact information. Ads are subject to review and editing. Email submission to hmctvguide@comcast.net, attention Louise O'Brien, or place printed/typed copy in the Channel 20 mailbox outside the building. You must be a HM resident to advertise.

FOR SALE Entertainment center; 52" x 15", 2 glass tier shelves with 2 drawer wood shelf and floating swivel TV mount or on top shelf mount, popular with birch veneer, like new. \$150 OBO. Call

FOR SALE One pair of beautiful pinched curtains & valance, Carolina blue, 82", custom made, soft pattern, lined, rings included. \$75. Call

FOR SALE Happy home wanted for Mickey and Minnie Mouse memo-

rabilia straight from Disney World in Florida. Figurines, doll, some musical toys, etc. Kept under glass and never played with. Half price sale. Contact me at or

FOR SALE Moving and would like to sell items. Cherry wood **executive desk**. \$500. Leather **swivel chair**. \$100. Oak **roll top desk**. \$2,500. Any reasonable offer will be considered. Call Stephen at or

FOR SALE Crate and Barrel cream colored queen size **wrought iron bed**. Crate and Barrel cream colored **end tables**. For Donegal's end unit loft room: **portable A/C**, 4 years old with window attachment for venting. Williamsburg brass **andirons plus log grate**. **Electric heater** looks like black wood stove. Over-the-mantle **mirror** with gold frame. Chinese **wall screen**. Small Sony **stereo CD/radio**, teal. 2009 **Honda CRV**, black, 32,000 miles; for sale in June. Call Sally at

or

FOR SALE Professional quality **wood desk** with glass top and locks, 31" deep x 30" high x 60" wide. \$125. Bello **corner TV table**, polished metal frame, 3 glass shelves, like new, 21" deep x 43" wide x 24" high, purchased

for \$226. \$95. **Freezer**, looks good and runs good. \$75. Call

FOR SALE Oak, 4 piece **TV wall unit**, mantle on top. Center bottom cabinet for TV is 40" x 32 1/2". Two side glass door towers are 6.3" x 24" with bottom closed storage. \$250. Call . Photo available.

FREE Metal shelves for garage or basement. Call Sally at or



Now Open

Toninos

PIZZA & PASTA CO.

10% DISCOUNT ON ENTREES FOR HERSHEY MILL RESIDENTS

Come enjoy our homemade pastas, pizzas, and signature Italian dishes

235 Lancaster Ave • Frazer PA • **610.240.9566** • www.toninospizzaandpasta.com

Marlene is making a difference...

For Listing or Buying Real Estate call

Marlene Gulczynski, GRI, CRS, SRES, CSP
Life Gold PAR Excellence
Seniors Real Estate Specialist

Call a **NEIGHBOR**
surrounded by her successes.

RE/MAX Main Line

Office: 610-640-9300
Direct Line: 610-701-9966
E-mail: Marlene@SoldbyMarleneG.com

Ed McFalls | HM Homeowners Association

Fourth and final in an occasional series on the history of the Hershey's Mill Golf Club (HMGC).

Bringing HMGC Up To Date



In three early installments of the history of HMGC, we have reflected on the formation, early development, construction, membership growth and maturing of the club. This final installment will highlight the last dozen or so years.

After the difficult economic recession of the early 1990s, everyone on the club's waiting list was admitted and continuing attrition led to the re-opening of golf memberships to non-Hershey's Mill residents. America's love affair with the game of golf that saw an explosion in golf course development through the 1980s and early 1990s began to wane, and with it, HMGC's overall number of golf memberships also declined. Younger players indi-

cated that their lives were just too busy on weekends to make a commitment to club membership. Different membership structures had to be developed to appeal to players with active family and business lives.

As the Hershey's Mill membership began evolving, golf members wanted more and better opportunities for honing their golf skills. With the assistance of golf course architect Brian Ault, a plan was developed to level and expand the practice putting green, to add another green with an associated bunker for chipping and sand practice, and larger teeing areas were developed for the driving range.

At the same time, members began clamoring for a clubhouse face-lift. The first effort was to expand the bar/lounge in 2006 to accommodate many more patrons and achieve a more "Chester County" feel to the décor. The



new Lounge was so well received that management was convinced to extend the "new look" throughout the restaurant areas of the club the following winter and spring, and the club was reborn once again. The next year, in 2008, a similar face-lift was accomplished throughout the lower level of the clubhouse as well.

In the six years since the clubhouse's major makeover, the club's focus has been the improvement of its bunkers. Beginning with a couple of test bunkers on Hole #2, the Greens staff has adopted a bunker renovation program developed here in the Philadelphia area whereby bunkers

were stripped of their sand, reconfigured as desired, drainage is added, and then a Matrix macadam is spread across the bottom before new sand is installed. The beauty of this process has been how well it accepts heavy downpours without the sand washing out, and the Matrix prevents contamination of the sand with soil and stones. This program has been utilized on Holes 2, 3, 4, 5, 8, and new in 2015, Hole #1.

are stripped of their sand, reconfigured as desired, drainage is added, and then a Matrix macadam is spread across the bottom before new sand is installed. The beauty of this process has been how well it accepts heavy downpours without the sand washing out, and the Matrix prevents contamination of the sand with soil and stones. This program has been utilized on Holes 2, 3, 4, 5, 8, and new in 2015, Hole #1.

Hershey's Mill Golf Club is an integral part of this wonderful community. The club grew up with the villages, and both villages and HMGC mutually benefit and make the other better. It is a relationship that is important to the continued success of the Hershey's Mill lifestyle.

Golf, like the measles, should be caught young, for, if postponed to riper years, the results may be serious. – P.G. Wodehouse

Golf Tip

This month's golf tip concerns your warm-up session prior to heading to the first tee. I know some of you consider the nice walk to and from the locker room plus the bending over to put on golf shoes all the warm-up you need, but there is a great benefit to your golf swing if you do allow yourself enough time to hit a few balls. This is non-

critical practice time. You are not to be working any major changes; just loosening your muscles, and more importantly taking note of any tendencies in your ball flight. Use those shot patterns as part of your course management and you'll see your scores improve.

Matt Harvey, PGA

April Club Activities

April 2 Steakhouse Night
 April 5 Easter Brunch

May Club Activities

May 2 Derby Day
 May 7 Steakhouse Night
 May 10 Mothers Day
 May 21 Trivia Night
 May 24 Memorial Day Cookout

No Dental Insurance, No Problem

Hershey's Mill Savings Plan \$150/year
Includes 2 cleanings, 2 exams and X-rays,
and 25% off all other treatments

Hershey's Mill Special Pricing

- Crowns \$800
- Implants \$999*
- Full Denture Set \$1600
- Flexible Partial \$800

*Make appointment for details



Exton Dental Arts

Ship Village Shopping Center
913 East Boot Road, West Chester
610-701-0102
www.ExtonDentalArts.com

Quality Care by Caring Professionals

We are committed to the philosophy that Barclay Friends must be a good place to work if it is to be a good place to live.

Barclay Friends

A KENDAL AFFILIATE | Together, transforming the experience of aging.*

A Continuing Care Community with Post-Acute Rehabilitation



"The staff at Barclay Friends is well-known for its longevity and reputation for care."

—Brooks Adams Research

700 N. Franklin Street
West Chester, PA 19380
610-696-5211
www.bf.kendal.org



©2012 The Kendal Corporation

EEO/ADA/LEP



FLOWERS AND FIRE TRUCKS

Ralph Verno | Yardley

The Goshen Fire Company will again welcome spring with flower sales for Easter and Mother's Day. These annual fundraising events, now in their 21st year, have grown in size and popularity. This is a convenient place to purchase a beautiful array of flowering bulbs and plants for the home and yard – while providing support for our local fire company.

The Easter sale, scheduled for April 3, 4 and 5, will feature tulips, hyacinths, daffodils, lilies and small flowering bulbs in pots or basket arrangements. A few azaleas, hydrangeas and other flowering plants will also be available. Hours for the Easter sale at the Greenhill Road Fire House (at the corner of Greenhill and Boot Roads) are:

Friday, April 3, 10am to 7pm

Saturday, April 4, 10am to 7pm

Sunday, April 5, 9am to 2pm
(or until sold out)

The Mothers's Day sale features a variety of hanging baskets, azaleas, hydrangeas, bushes and bedding plants in four-packs up to six-inch size pots. Also available are select daylily cultivars grown by an East Goshen collector. Hours for this sale at the Greenhill Road Fire House are:

Friday, May 8, 10am to 7pm

Saturday, May 9, 10am to 7pm

Sunday, May 10, 9am until 2pm
(or until sold out)

Please bring your children and grandchildren for a tour of the fire trucks and ambulance. Fire prevention information is available, and we love to talk to visitors about prevention.

If you are interested in helping with either or both sales, please contact Alice Horton at _____ or _____ . See you in April.

Photographs provided by
Goshen Fire Company



CLUBS/GROUPS ARE LISTED IN ALPHABETICAL ORDER

APPLE MAC CONNECTION

Carol Campanelli | Ulster

Looking for help with your iPad? Bob Barton's "Guide to the iPad" interview airs on HMC-TV Channel 20 from April 1 through April 15. In the first segment he describes his background, and in the second he explains the basics of using your iPad; with additional tips about your computer. Have your iPad in front of you as you follow Bob's instruction. Bob is the expert who comes to the Community Center on the fourth Saturday of each month to lead a question and answer session about all Macintosh related questions. The Saturday sessions run from 10am to noon; and coffee, tea, and light refreshments are usually available.

ART GROUP

Dave Linton | Springton

We are a casual group with all levels of artistic talent who meet Wednesdays from 12:30pm to 3pm upstairs at the Community Center. Gather whatever art supplies you might have hanging around and join us. Check out our art-

work which is on display on the first level of the community Center.



BOOK CLUB

*Anne McAssey | Merrifield
Audene Paulson | Eaton*

Under the Wide and Starry Sky
by Nancy Horan

If you enjoy the writings of Robert Louis Stevenson, you'll be fascinated by this account of his life and his long-running romance with a woman many years his senior. We will discuss this book on April 9 at 2pm at the Sullivan House. Join us!

CASUAL SINGING GROUP

Sally Thompson | Franklin

Those of us having a marvelous time singing our hearts out wonder why so many folks like sitting in front of a TV when they could be exercising their vocal chords while having such fun! This was meant to be a way for people that live in different villages to get to know each other and build up friendships among others with the same interest in singing without rehearsing or performing. Come when you can to the top floor of the Community Center and see what you've been missing! Call if you have questions.

CHESS CLUB

Miki Sugar | Quaker

Meetings of the Chess Club are on Thursday at 1:30pm in the Sullivan House. New members, or for additional information, please call Miki Sugar at

COMPUTER CLUB

Don Trauger | Kennett

Be sure to attend the PC Club meeting Tuesday, March 10 at 7pm in the Ardmore Room of the Community Center. There is a new topic discussed each month as well as a question and answer segment. This month we will discuss setting up a Windows 8.1 PC. So bring your questions and we will make an effort to get you answers.

HAVURAH CLUB

Ray Tauber | Chandler



The Hershey's Mill Havurah is having its' annual after Passover Brunch on Sunday, May 18 at the Sullivan House from 1pm to 4:30pm. The cost per person is \$30. Food will be catered by Foodarama.

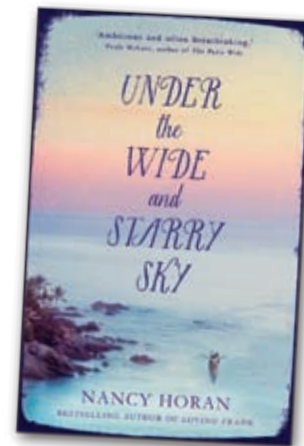
Fred Miller, a professional pianist and singer, will be presenting a "Lecture in Song" on the music and life of

George Gershwin.

STRESS MANAGEMENT

Anita Weeks | Kennett

Stress Management has been about remedies for wellness; which have included meditation, relationships, and sex. We are finding people have interest and are observing our progress for next year's schedule. The group is very close, even if small, and the students are committed and enjoying this time of learning holistic remedies. If you are interested for next year, come and visit. We meet in the Billiards room of the Community Center on Thursday nights from 7pm to 8:30pm. RSVP to Anita Weeks at



Deck Protect Plus LLC

Specializing in cleaning and weatherproofing all exterior woods.
The plus equals professional handyman services.

610-202-0724
deckprotectplusllc.com

Don Trauger | Kennett

After unpacking and positioning your new PC, make all your cable connections and turn it on. When it's on you will be asked by Microsoft Windows to configure your PC via screen prompts. The following guide should help you through this process.

click on the name of your home wireless network (the router's SSID) and enter your router's password if you have one. Choose ethernet if you are connected to a modem or router by a cable. Click Next.

Under **Settings** don't use Express settings. **Click customize.** Click Yes for Home or Work networks. **Windows**

Setting Up A New Windows 8.1 PC

The first screen is **Region and Language.** Click the down arrow in the time zone, scroll down to Eastern time, click it, then click Next. For Dell computers, skip any entry under "Dell Support and Protection." Click Next.

Update should display to automatically install important and recommended updates. Under Update your PC and Apps, and Help Protect Your PC and Your Privacy, all switches should be on. Click Next.

Under **Check Online for Solutions,** both items should be on. Under **Help Improve Microsoft Products and Services,** all should be set to off. Click Next.

Under **Sign in to Your Microsoft Account,** skip this and look further down the screen and click Create a New Account. Under Create a Microsoft Account, skip the open

fields and click "Sign in without a Microsoft account."

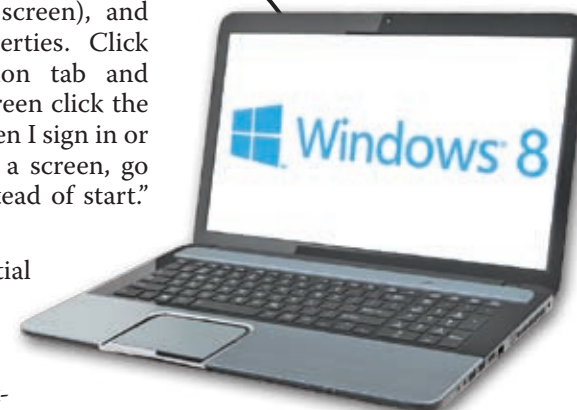
Under **Your Account,** enter your name in the user name field. A password is optional. This log-on password only protects your PC from other household members starting up and using

your computer. It has nothing to do with Internet security. Click Finish. It will take several minutes to finish the setup. After setup completes it will display the Desktop screen or the "Live Tiles" screen. If the "Live Tiles" screen is displayed and you prefer the Desktop screen, which is used in previous Windows editions, then do the following: Locate the Desktop tile in the "Live Tile" grouping and left click it.

Next, right click a blank area of the Task Bar (at bottom of screen), and click Properties. Click the Navigation tab and under Start Screen click the box next to "When I sign in or close all Apps on a screen, go to the Desktop instead of start." Click OK.

This concludes the initial setup of a Windows 8.1 computer. Other things to consider would be to install your printer software, install Apache Open Office (a good substitute for Microsoft Office), and install CCleaner to clean up junk files. For improved security, install Malwarebytes Anti-Malware and AdwCleaner. Uninstall the antivirus program that came with the PC and install Bitdefender Antivirus. For improved protection from Internet threats, install the Google Chrome browser and add Adblock Plus (from adblockplus.org) to help block unwanted ads from other advertisers. All of the programs mentioned are reliable and do an effective job. The best part is that they are free and available from www.filehippo.com (except for Google Chrome and Adblock Plus).

If you still have a Windows XP computer, it's no longer supported by Microsoft for any updates. If you have a Windows Vista computer, it's still supported but it's aging. I recommend that you replace an old obsolete computer with a Dell Inspiron Small Desktop 3000 series with an Intel I3 3.6 GHz processor. Dell sells it for \$380 at their online store. This computer surprised me for a low cost but very fast computer. It should meet or exceed the needs for general Internet use, word processing, and most



photography requirements. One additional nice factor, it's about 1/3 the size of a standard tower computer.

Laptops in this price range will have slower processors and hard drives compared to Desktops. The result is improved battery life between charges but at the expense of overall performance.

To help you with more questions about setting up a new Windows 8.1 computer, or any PC subject, the PC Club meets on the second Tuesday of every month at 7pm upstairs in the Ardmore room of the Community Center.



The next screen is **License Terms.** Click I accept. The next screen is **Register and Protect.** When you see this screen, register your computer as instructed but decline any additional offers except for updating your PC's drivers and software. Click Next.

Next is **Personalize.** Give your PC a name. Don't use your personal name; use something else. Under **Get Online,**

PREMIER DENTISTRY

\$199 Annual Plan

FOR HERSHEY'S MILL: X-RAYS,
TWO CLEANINGS, TWO EXAMS,
TWO ORAL CANCER SCREENINGS,
PLUS 20% OFF ANY DENTAL WORK

FREE
NEW
PATIENT
DENTAL EXAM

Porcelain Crowns in one visit: 20% OFF

Goshen Village Shopping Center,
next to Oriental Pearl and Athena Pizza
1544 Paoli Pike, West Chester, PA 19380

610-696-7066 www.MeyersonDental.com



Serving Chester County



SPRING SAVINGS

- \$69 Diagnostic Evaluations (New Customers)
- \$89 A/C & Heat Pump Cleanings (New Customers)
- EAP, PECO Rebates and Manufacturer Rebates
- Extended Parts & Labor Warranties
- We service all brands and models
- FREE Installation Estimates

610.399.1998

www.DonnellyHVAC.com

Donnellyhvac@verizon.net



State Licensed, Insured & Bonded
Proudly Serving Chester County for
Over 30 Years

Offering Non-Medical Services
Including: Personal Care,
Companionship,
Homemaking and More
Hourly \$17.50/hour (4 Hour
Minimum)

Live-In: \$175.00/Day
Call Our Office: 610-458-7100
www.griswoldhomecare.com

Have questions?

Have you made final arrangements?
Do you know what decisions need to be made?
Do you have any idea of the costs involved?

Get answers.

Most of us protect against things that may happen; fire insurance, auto insurance, health insurance and homeowner's insurance.

What about protecting your family for the one thing that will happen.

Death is the ultimate cycle of life that will occur in everyone's family.

Make final arrangements in advance and spare your family the emotional and financial burden they will face.

Call today

Our expert Pre-Planning Advisor, Merle Eakins, will provide you with valuable no obligation information.

610-265-1660



Merle Eakins

Special offer available exclusively for Hershey Mills residents and families.



Valley Forge Memorial Gardens

The area's most beautiful historic cemetery
265 S. Gulph Road, King of Prussia, PA 19406



Pre-Planning is the Ultimate gift of Love!

Joe Kennedy | Princeton

On August 5, 1843, Delaware County was hit by a massive flood that came with little warning. The raging water took 19 lives, destroyed property, and tested the endurance of the local people. In economic terms of the time, it was a calamity of the first order.

A moderate rainfall began about 7am on August 5 and continued until noon. People who lived and worked on the banks of Chester, Ridley, Crum, and

by the mighty torrent," reported the *Republican*. Horses, other livestock, and people, mostly children, were drowned quickly.

Yet there are reports of rescues that told of people rising to the heroic. Such a story was the

rescue of the Hargraves family. The Hargraves were on the second floor in the center unit of a three-family stone building when the waters of Ridley Creek smashed into their unit. The impact tore a large hole in their floor, separating Hargraves and four of his children, who were on a bed, from Mrs. Hargraves and her baby, huddled on a small piece of flooring in a corner of the room.

A man named Holt, who had fled to higher ground, saw the Hargraves' predicament. Securing one end of a rope to a tree and tying the other end around his waist, Holt struggled into the swirling water to reach the family. When he arrived at the building he removed the rope from his waist and tied it to a rock, creating a safety line.

He entered the house, made his way to the second floor, and cut a hole in the wall to reach the place where the Hargraveses were holding on. He took the father and children downstairs, then went back for the rest of the family. Using a ladder, he was able to guide the mother and baby across the hole in the floor to rejoin the others. Hanging on

to Holt's rope the Hargraves were able to pull themselves though the water to safety. Holt was the last to cross.

A year later in 1844, the Institute of Science report counted the human and economic costs of the flood. In addition to the 19 dead, loss of personal real estate was put at more than \$230,000; which translates into millions in today's dollars.

No dollar amount was put on the loss of personal property, food-stuffs,

trees and farm fields.

Roads were washed out as were 32 bridges at the cost of nearly \$25,000. Eight factories, seven mills and five mill dams were destroyed at the cost of hundreds of thousands of dollars. The people were left with little and were for a time dependent on the help of families and the charity of churches outside the flood area. There is no readily available historical material to determine how long it took for flood victims to rebuild their lives. But of course they did.

The Great Flood Of 1843

"Our county was visited on Saturday evening last by the most destructive and afflicting storm that was ever known," reported the *Delaware County Republican*.

One must remember that in the first half of the 19th century there was, of course, no radio or television to broadcast flood warnings, little or no organized rescue service, no Red Cross, little insurance against this type of loss, no government disaster relief, and no unemployment compensation. This natural disaster was so unprecedented that a committee was appointed by the Delaware County Institute of Science to make an investigation and publish a report on the event. In addition to the report by the Institute of Science, there are the news reports of the *Republican*, plus a modern (1988) article by noted local historian Thomas J. DiFilippo, that document the "great flood of 1843."

Darby Creeks had experienced flooding and were not alarmed by this rainfall. But early in the afternoon the rain increased into what DiFilippo described as "a tropical hurricane-type rain with high winds and thunder and lightning." Visibility was reduced to about 50 feet due to the increase in rain and wind, according to eyewitness accounts.

In the upper section of the county, the wind reached tornado proportions, "which leveled to the earth the largest trees, tore away fences and scattered everything within its range." Starting about 6pm, the major creeks began to overflow their banks and developed into walls of water moving at great speed toward the Delaware River. In Chester, the water rose 23 feet in about one hour.

"Houses, vessels, machinery, carriages, carts, furniture, timber boats, mills, factories, bridges, and trees were swept away





MICHELLE AITKEN, DDS

SMILE SOLUTIONS

Exceptional Dentistry, Affordable Prices

HERSHEY'S MILL VIP DENTAL PLAN

\$199/yr

includes two cleanings, two exams, annual x-rays,
plus a 15-25% discount off treatment

- **15% Discount for Hershey's Mill Residents**
(Compare our fees to other dental offices in the area . . . You'll be surprised!)
- **Most Insurance Plans Accepted**
- **In-home Service for Dentures and Partial**
- **Fast turn-around on Dentures and Partial**
- **Digital, Low-Radiation X-Rays**



HERSHEY'S MILL SPECIAL PRICING

| | |
|---|----------------|
| zcom! Whitening <small>(regularly \$750)</small> | \$299 |
| Crown | \$850 |
| Custom Full Set Denture | \$1,750 |
| Flexible Partial | \$1,050 |
| Reline | \$185 |

Located in the Hershey's Mill Village Shopping Center
1381 E. Boot Road • West Chester, PA 19380
(610) 918.4995 • brilliantsmilesdentalgroup.com

RECIPES

This favorite soup is a tradition for many during the celebration of Passover, beginning this year on April 3. But anyone who has enjoyed this soup homemade, or at a favorite delicatessen, throughout the year knows it is the perfect way to fend off those lingering chilly April evenings. We hope you enjoy it as much as we do.

Matzo Balls Chicken Soup

There are three parts to this very traditional soup, and they can be made separately and refrigerated until needed.

Serves about 8

¼ pound chicken fat, finely chopped
1 ½ tablespoons onion, finely minced

1 5-6 pound stewing chicken, cut up
8 sprigs parsley
3 stalks celery, cut up
2 medium carrots, cut up
2 medium onions, cut up
2 bay leaves
1 tablespoon salt
½ teaspoon pepper
12 cups water

3 egg yolks
¼ cup chicken broth
¼ cup rendered chicken fat
1 teaspoon salt
¼ teaspoon pepper
¾ cup matzo meal
3 egg whites,
stiffly beaten

Render fat by cooking over low heat, along with onions, for about 30 minutes. Strain to remove solids.

In a heavy soup pot, mix chicken, parsley, vegetables, bay leaves, salt, pepper and water. Simmer until chicken is very tender (about 2-2½ hours). Skim off most of the fat. Remove chicken; this can be cut up and added back to the soup (optional) or used for another dish. Strain broth and discard the vegetables. Bring broth (and cut up chicken pieces if using) to a low boil; this will be used to cook the matzo balls.

Beat yolks well, then beat in broth, fat, salt and pepper. Beat in matzo meal about ¼ cup at a time, then fold in the egg whites. Cover and refrigerate until firm (at least 30 minutes). Shape into balls (about 2 tablespoons for large), and drop into boiling soup. Stir gently so they don't stick, then reduce to a simmer and let cook for 40-60 minutes. Do not stir again after adding.



VOTED #1 FLOORING STORE BY MAIN LINE & DAILY LOCAL READERS



Where
PERSONAL SERVICE Makes the DIFFERENCE

705 E. Gay Street ■ West Chester
www.BoylesFlooring.com ■ 610-429-9773



Paoli Rug Co.

Since 1956



Rug Cleaning & Repair on Premises

610-644-7250

- Free Pickup & Delivery
- Best Selection of Wall to Wall and Oriental Rugs



www.paolirug.com

Call Today For A 5% Discount For Hershey's Mill!



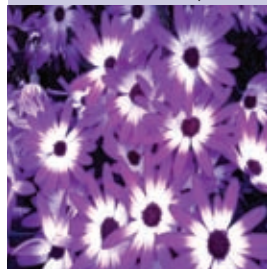
Complete Landscaping Packages

- Professional Consultation
- Scale Drawings & Design
- Complete Necessary Forms
- Installation & Warranty

610-692-2649

hmland@comcast.net

Michael C. Neale, P.C.H.
Connie L. Friedrich, P.C.H.



ACTIVITIES CONTACTS

| | |
|--|---------------------------|
| Alzheimer's/Dementia Support Group..... | Barbara Mulvey |
| Art Group..... | Dave Linton |
| Baby Boomers..... | Christy Herschel |
| Bible Study (Women's)..... | Marian Malloy |
| Bingo..... | Ollie Price |
| Book Discussion Group..... | Anne McAssey |
| Bowling | Franne Lytle..... |
| Bridge Groups: | |
| WH Duplicate, Mon. 12:30pm..... | Joey Livesey..... |
| WH Duplicate Bridge, Mon. 7pm..... | Lee Gamma |
| Golf Club Tuesday Bridgers, Members Only | J.B. Smink |
| Social Club Party Bridge, Members Only..... | Susan Hackstaff..... |
| Golf Club Friday Bridge, Members Only..... | John Marks..... |
| Bus Trips | Marc Fraser..... |
| Card Games..... | Penny Adolf |
| CareSharers..... | (Answering Service) |
| Chess Club | Miki Sugar..... |
| Chester County Hospital Auxiliary..... | Constance Campbell..... |
| Community Center Reservations | (Answering Service) |
| Computer Club (Apple Macintosh)..... | Carol Campanelli |
| Computer Club (PC)..... | Don Trauger..... |
| Cradle Stitchers..... | Donna Faunce..... |
| English Darts..... | Sam Arcana |
| Exercise Groups: | |
| Aerobic Dance/Exercise..... | Barbara Thomas |
| Ageless Exercise..... | Gayle Ulrich..... |
| Tai Chi..... | Mitch Goldfarb |
| Yoga..... | Ellie Sybesma |
| Friends of Sullivan House (FOSH) | Ann Gunn |
| Garden Club..... | Jim DiCarlo |
| Golf Club..... | Scott Martin |
| Havurah (Friends Group) | Tillie Markowitz |
| Investment Group..... | Fil Rizzo..... |
| Knitting Circle | Bernice Soffer |
| Library Board..... | Becky Bell..... |
| Mah Jongg..... | Erna Graham |
| Model Railroaders..... | Dave Voorhees |
| Paoli Hospital Auxiliary..... | Patty Murphy..... |
| Pinochle Club | Erna Graham |
| Players | Franne Lytle..... |
| Poker Club | Mike Brindisi..... |
| Pool | Carol Campanelli |
| Quilters..... | Diane King..... |
| Rummikub | Maryann Tracey |
| Singers | Bonalyn Mosteller..... |
| Social Club | Lee Gamma |
| Sports Group..... | Helen Greco |
| Stress Management..... | Anita Weeks..... |
| Sullivan House Reservations..... | (Answering Service) |
| TV Channel 20..... | Don Trauger..... |
| Wood Shop..... | Ben Ellis..... |

Additional contacts available in the annual *HM Resident Directory*

ADVERTISERS' INDEX

| | | | |
|--|----|---|----|
| Angel Companions | 2 | MacLaren Fabrication | 26 |
| A to Z Appliance Repair | 32 | Made Easy Inc..... | 25 |
| Barclay Friends | 52 | Michall Daimion Heating & Air Conditioning | 22 |
| Bayada Home Health Care | 12 | O'Brien Heating & Air Conditioning | 40 |
| Blinds 4 U..... | 36 | Oliver | 32 |
| Boyles Flooring | 63 | Oriental Pearl Restaurant | 17 |
| Brewer Heating & Air Conditioning | 36 | Paoli Hospital..... | 37 |
| Brooklands Audiology, Inc..... | 67 | Paoli Rug Co..... | 64 |
| Buckley, Brion, McGuire & Morris LLP | 10 | Piano Lessons..... | 40 |
| Calmon Patient Advocate..... | 32 | Pine & Pine Law Offices..... | 16 |
| Chester County Orthopaedic Associates..... | 6 | Podiatry, Ronald Melincoff, DPM...2 | |
| Cordes Contracting | 36 | Podiatry Care Specialists..... | 22 |
| Deck Protect Plus LLC..... | 54 | Premier Dentistry..... | 58 |
| Del Vacchio Landscape & Garden Center | 26 | RE/MAX Main Line | 49 |
| Donnelly Heating & Air Conditioning Inc. | 58 | Richard J. Egan Painting Co..... | 40 |
| E.W. Brown, Inc..... | 12 | Riddle Village | 33 |
| Exton Dental Arts | 52 | Ruggeri Cadillac | 4 |
| Franklin Auto Spa | 30 | Safe Bath | 13 |
| Freedom Village Brandywine..... | 27 | SarahCare | 23 |
| Friends of Sullivan House..... | 44 | Seniors Helping Seniors..... | 36 |
| General Warren Inne..... | 40 | ShelfGenie..... | 12 |
| Griswold Home Care..... | 58 | Signature HVAC..... | 24 |
| Haller Enterprises, Inc. | 13 | Smile Solutions | 62 |
| Hershey's Mill Landscape..... | 64 | Stowers Handyman Service LLC | 26 |
| Hershey's Mill Realty..... | 3 | Surrey Services for Seniors | 45 |
| John S. Price, Jeweler, Inc. | 26 | Survival Essentials..... | 12 |
| Kevin Free..... | 32 | Toninos Pizza & Pasta Co..... | 48 |
| Knots & Weaves | 30 | Valley Forge Memorial Gardens..... | 59 |
| | | Wagner Real Estate, Inc. | 68 |
| | | Wellington | 41 |

HMC-TV thanks our advertisers for their support.

When you contact one of our advertisers, make sure to mention that you saw them in the *Guide and Digest!*

I Listen...

so you can hear better!

**Patricia A. Cohen MA CCC
Licensed Audiologist**



Brooklands Audiology^{inc.}

Meeting Your Hearing & Budget Needs

Over 25 years experience

Serving Hershey's Mill for over 12 years

Complete Hearing Care

State of the Art, Rechargeable, Virtually Invisible

Digital Hearing Aids

Testing Repairs & Service

Amplified Telephone & TV Devices

Hershey's Mill Courtesies

20% off already discounted Hearing Aid Prices

0% Financing Easy Payment Plans 60 Day Trial Period

Free Monthly Hearing Screenings at the Community Center

I represent you to the Major Manufacturers

Please Call 610-408-9250 for appointment

301 Lindenwood Dr. Malvern - Off Rt 30 2 Lights North on Rt 29

Across from Wegmans



Pat Meehan
610-574-2465
Eaton Village

John Clarke
610-547-3861
Eaton Village

Lynne Carter
610-291-1282
Kennett Village

Trust the team that lives here to sell your home.

We sell homes exclusively in Hershey's Mill – so we have a unique understanding of the real estate market here. Using our knowledge and expertise, we will market your home to get you the best price possible.

We've sold hundreds of homes throughout the Mill and we are ready to sell yours. After all, we *live the lifestyle we sell.*

Selling • Buying • Estates
Serving clients exclusively within Hershey's Mill
www.HersheysMillTeam.com



WAGNER INC.
REAL ESTATE
4 Generations Since 1930

610-446-2300