

MAY 2015

GUIDE — AND — DIGEST



A PUBLICATION OF HMC-TV AT HERSHEY'S MILL

Healthy Feet for an Active Life

Conservative, non-surgical options for most foot conditions



DR. RONALD H. MELINCOFF

Primary Podiatric Medicine

Fellow American Professional Wound Care Association
Specializing in the Care of Diabetic and Medically-At-Risk Feet

Day and evening appointments

610-692-0578

Goshen Executive Center, Suite 200-B
1450 East Boot Road
(Boot Road and Paoli Pike – Opposite CVS)



ANGEL COMPANIONS®



Affordable and compassionate care by a locally owned and managed company - we are licensed and our employees are bonded & insured.

Please call for a free assessment:

610-644-8780

Home Care for Seniors

- Personal care
- Hospice assistance
- Meal preparation
- Medication reminders
- Laundry
- Light housekeeping
- Companionship
- Transportation

**Ask about our
Live-in Program**

www.angelcompanions.net

Your On-Site Real Estate Team at Hershey's Mill

Our experienced team has sold more homes in Hershey's Mill than any other, and has been doing so since 1978. No other agency captures buyer interest like our *on-site* office provides.

In a complex market, it takes more than a basic listing to achieve your goals. So when you need market information, are planning to sell, or looking to purchase, we invite you to stop in at the only full service real estate office at Hershey's Mill. Selling homes here is our *only* business.

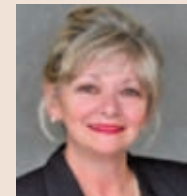
We are located at the Main Gate, and open 7 days a week, so you can meet with an agent when it is convenient for you.

610-436-8922

www.hersheysmillrealty.com



Lillian Willis



Monica Connolly



Carol Flynn

1500 Greenhill Road, West Chester, Pennsylvania 19380

Office hours are Monday-Saturday from 10-5 p.m.,
Sunday from Noon-5 p.m., and by appointment.

We recommend an appointment for viewing properties.

Hershey's Mill Community-TV

A fully self-supported nonprofit organization.

20 Hershey's Drive, West Chester, PA 19380
Tel 610-436-5922 • Fax 610-436-6429

Guide and Digest Email: hmctvguide@comcast.net
Business Email: hmctv@comcast.net



HMC-TV Board of Directors

Donald J. Trauger, *President* Carl Fletcher, *Vice President* Louise O'Brien
Margie Joyce, *Treasurer* Helen Heller, *Secretary* Jack Keeley

All submissions are welcomed. Send to hmctvguide@comcast.net, Attention Editor. Hardcopy submissions are not accepted. Articles should be limited to 500 words (although others may be considered), and photographs should be high-resolution. HMC-TV reserves the right to determine suitability and has sole discretion to publish any submission. Submissions should be received 6 weeks in advance of an edition for possible inclusion, those after will be reviewed for the next; contact the Editor for exceptions. Articles are subject to editing for space, clarity, and grammar. Contents are from various sources; the information and opinions are of the author, and may not reflect those of Hershey's Mill Community-TV, its officers, or directors.

HMC-TV Guide and Digest

Volume XVI Number 5 – May 2015

Editor Louise O'Brien

Featured Writers

Gay Barry, Joe Kennedy,
Louise O'Brien, Don Trauger

Advertising/Marketing Director Jack Keeley

Marketing Finance Director Gerry O'Brien

Volunteer Coordinator Lee Gamma

	From The Main Gate	7
	Pool News	8
	Green Hill Sewer Association	10
	Master Association	14
	HM Bus Trips	16
	HM Singers' Spring Concert	21
	Resident Directory Changes	23
	Dining Out	24
	Local History	28
	Activities Calendar	32
	Community News	36
	HMC-TV Ch20 Programming	40
	HM Golf Club	44
	Classifieds	47
	Club News	50
	Technology Tips	54
	HM Library News	57
	Recipes	59
	Activities Contacts	61
	Advertisers' Index	62

Ruggeri Cadillac Moving Sale Event

During our Moving Sale Event Mark Ruggeri is selling 2014 and 2015 Cadillacs at GM Supplier Prices.

(2015 ATS Coupe & Escalade excluded)



Moving 1 mile south to 1550 Wilmington Pike. New location, same great commitment!



610-455-1700

RuggeriCadillac.com

1265 Wilmington Pike (Rt. 202)
West Chester, PA 19382

RUGGERI CADILLAC
OF WEST CHESTER

Superior Cadillac Sales & Service in Chester County Since 1933

Cover: A beautiful evening for an event at the Hershey's Mill Pool. See the Pool News section for information about, and activities at, the Pool.

FOOT AND ANKLE CARE IN CHESTER COUNTY IS NOW JUST A STEP AWAY



Orthopaedic Surgeon
Greg Kirwan, D.O.
Foot and Ankle Specialist

- Specializing in operative and nonoperative treatment in all areas of foot and ankle disorders
- Focuses on being YOUR partner in foot and ankle care
- Practices at our West Chester and Kennett Square offices of Chester County Orthopaedic Associates



THE ORTHOPAEDIC CENTER
Chester County Orthopaedic Associates

We specialize in:

- MINIMALLY INVASIVE SURGERY
- TOTAL JOINT REPLACEMENTS
- SHOULDER RECONSTRUCTION
- SPORTS MEDICINE
- FRACTURE CARE
- SPINE CARE
- HAND SURGERY AND REHAB
- PHYSICAL THERAPY
- MRI
- SPINAL SURGERY
- FOOT AND ANKLE CARE

Our Team:

- | | |
|-----------------------|----------------------|
| John Benner, MD | Chet Simmons Jr., MD |
| Jeff Citara, DO | Mark Tantorski, DO |
| Robert Huxster, MD | Adrienne Towsen, MD |
| Todd A. Michener, MD | Richard Ziegler, MD |
| Matthew Schaeffer, MD | Greg Kirwan, DO |

West Chester

915 Old Fern Hill Road
Building A, Suite 1
West Chester, PA 19380
T: (610) 692-6280

Mon - Fri, 8:00-4:30

Kennett Square

400 McFarlan Road
Suite 100
Kennett Square, PA 19348
T: (610) 444-1344

Mon - Fri, 8:30-4:00



visit us at ccortho.com or premierortho.com

FROM THE MAIN GATE

Marc Fraser | Director of Security

The Hershey's Mill Security Department would like to remind pedestrians that they should utilize sidewalks, where available.

these areas, pedestrians should use extra caution and be aware that drivers may have a difficult time seeing them. Just because a pedestrian notices the vehicle coming toward them does not mean that the driver has also seen the pedestrian. Both parties should always

Pedestrian Safety



use caution when sharing the roadways within Hershey's Mill!



Where sidewalks are unavailable, pedestrians should utilize the shoulder on the left side of the road facing oncoming traffic, as this allows drivers and pedestrians alike a much better opportunity to see the other approaching.

However, keep in mind that Hershey's Mill roadways also have several "blind spots" (small rises in the road, curves, and other areas of poor visibility). In

Lastly, all pedestrians as well as operators of automobiles, golf carts, and bicycles are required to abide by the traffic rules and regulations of Hershey's Mill on both roadways and walkways. *Thank you!*

We Do The Work, So You Don't Have To.

Downsizing to
move can be
overwhelming.

Call Survival
Essentials.

survival essentials
OUR TIME, YOUR FREEDOM

610-804-8646

www.SurvivalEssentials.com
Jean Back/Chandler Drive/Hershey's Mill

Carol Campanelli | Ulster

VOLUNTEERS

Are you a pool volunteer or interested in volunteering? Then RSVP to Carol at **ASAP** to attend the Orientation Brunch at Roger's on Boot Road. This will take place on **Tuesday, May 5 from 10am to 11:30am.**



POOL OPENS SATURDAY, MAY 23

Once again we welcome the new season with a free hot dog, chips and a drink. The fun starts at noon. Get your ticket when you sign in at the Pool's main gate (the back gate is for deliveries and guard use only).

REVISED POOL HOURS

Working with Donna Dufoe, who is returning for her second year as our pool manager, the Pool Committee has changed the Pool hours to **10:30am to 7:30pm** to accommodate the many residents who wish to swim later in the day. Opening a half hour later also means the air will be a little warmer.

ACQUACISE CLASS

We have expanded the season for the Acquacise class, which will now start the first Tuesday after Memorial Day. Note that the hours have changed for this class. The gates will now open to sign-in at 9:25am and the class will run from **9:45am to 10:30am**. All residents are welcome, but each class is limited to 40 participants. Since conversation at the side of the pool is a distraction to the class and the instructor, we ask that those not participating in the

Pool open May 23 through September 7, 2015
Hours are from 10:30 a.m. to 7:30 p.m.
Tel. 610-692-8437 • www.hersheysmillpool.com

class wait to enter until the Pool officially opens at 10:30am.

LATE AFTERNOON WORKOUT

Donna Dufoe, a certified Arthritis Foundation Instructor, will offer an



afternoon water workout from **5:30pm to 6:15pm** on **Tuesdays and Thursdays** from June 23 to August 20 (but no class on June 30). The fee will be \$50 for the summer, with a check payable to Donna Dufoe. Look for additional information on the Pool Bulletin Board.

KID FRIENDLY RULES

We know that many residents enjoy spending time at the Pool with their grandchildren, so in an effort to assure the safety and enjoyment of all residents and visitors we have

formulated "Kid Friendly Rules." These were first posted in August 2014 and have been refined for the upcoming season. They are printed in the *HM Pool 2015 Rules & Regulations* insert included with this edition of the *Guide and Digest*. This same information will also be provided on a large poster at the Pool. All residents should read the information, even if they don't have small guests, so that everyone understands our expectations for good pool behavior.

To provide additional activities for "out of the water" times, we are soliciting gently used board games to augment our Cove lending library. Just leave them in the Cove on the bookshelves.

TREASURER FAREWELL AND WELCOME

The Pool Committee is losing our wonderful treasurer, Peter Hensel, who will be moving to Tel Hai with his wife Ann. He has served the Pool well for many years and we thank him and wish him well. We are fortunate that our Pool funds will remain in capable hands as we welcome Michael Heaney as our new treasurer.



RICHARD. J. EGAN PAINTING CO.

The Superior Craftsmen ... We are Painting Specialists

Look at Princeton, Glenwood, Oakmont, Ashton, Robynwood, & Ulster Villages, & Sullivan House
 Ask Their Maintenance and Architectural Committees About Us

INTERIOR & EXTERIOR PAINTING • WALLPAPER HANGING
 DETAIL SPECIALISTS • REPLACEMENT WINDOWS • CUSTOM CARPENTRY
 POWER WASHING • WATERPROOFING DECKS • FULLY INSURED

Brushing and Rolling are Best! ...Spraying upon Request

FREE ESTIMATES Call: 610-353-3570

Ed McAssey | Merrifield

The Green Hill Sewer Association (GHSA) has been providing wastewater treatment for the residents of Hershey's Mill since 1981. In addition to the residents, GHSA supports Wellington and the shopping center.

sylvania Department of Environmental Protection.

Recently, a problem has developed due to the increased use of flushable wipes. These wipes do not disintegrate like toilet paper. A number of sewer authorities across the country have been spending large amounts of money

a rotary screen to shred the waste in the flow entering the plant. Last month, the grinder experienced a failure most probably due to the volume of non-degradable wipe material. In December 2013, the accumulation of wipe material in the system wetwell caused the failure of both primary

least one quarter of the wipe material agitated in water be broken into small enough pieces to pass through a small sieve within three hours. Unfortunately, the time between flushing and arrival at our plant intake is considerably less.

In Hershey's Mill, for example, the maximum time from Yardley to the plant is only 30 minutes. In addition, since the GHSA system is gravity driven, the trip to the plant is not as hard on the wipes as the "slosh-box" test.

To avoid greater operating expense, the Green Hill Sewer Association is asking the cooperation of the Hershey's Mill residents who feel that they want the convenience of these wipes. We are asking that you do not flush the wipes, but rather dispose of them in the trash. We are adopting the motto of the Waukesha, Wisconsin, Sewer Authority: "Keep Wipes out of Pipes."

Thank you in advance for your cooperation. Remember, only you can solve this problem.



pumps. Each of these failures increased the cost of operation for GHSA.

Prior to the 2013 failure, the plant wetwell was cleaned twice a year. Because of the large volume of wipe debris, the cleaning has been increased to four times a year. Monthly cleaning is under consideration. The outside contractor charges approximately \$1,200 per cleaning.

The manufacturers of these flushable wipes contend that they do not present a problem. They have conducted a "slosh-box" test, which requires that at

Please Keep Wipes Out Of Pipes

The plant, which is located along Chandler Drive opposite the HM Golf Club, uses an aerobic treatment process. In this process, air is supplied to microorganisms which metabolize the organic material. In the final phase of the treatment, the water is sprayed on permanent and seasonal spray fields including the golf course. Over the years, the treatment process has proven to be efficient, environmentally sound and economical. The current cost of the operation is less than \$20 per month per residence. Since its inception, the plant has been licensed by the Penn-

to address the problem. The Orange County, California, Sanitation District spent \$320,000 in one year on "de-ragging" maintenance calls to ten pump stations. The Washington Suburban Sanitary Commission has spent more than 1 million dollars on equipment to shred the wipe material. New York City is currently considering a ban on packaging that indicates that the wipes are flushable unless the product has passed an approved third party test.

In 2007, GHSA purchased and installed a grinder, called a muffin monster, and



ShelfGenie
EVERYTHING WITHIN REACH™

Transform Your Kitchen Without Replacing Your Cabinets

Easier Access • Better Organization • More Storage

FREE IN-HOME DESIGN CONSULTATION

Karen J. McKinney, Designer

610.331.0006 | kmckinn001@aol.com | shelfgenie.com



Special Offer for Residents of Hershey's Mill!

50% OFF LABOR

with purchase of 5 or more Glide-Out shelves.

Limit one offer per household.
*Valid on Glide-Out purchase with offer. Cannot be combined with other offers.



SENIORS HELPING SENIORS
...a way to give and to receive®

Like getting a little help from your friends.®

Call us today! (610) 590-4888

- Companionship
- Light Housekeeping
- Meal Preparation
- Overnight Stays (24-hour Care)

- Dementia/Alzheimer's Care
- Respite Care
- Personal Grooming and Dressing
- Transportation

Our loving, caring, compassionate seniors are there to help. We offer all the services you need to stay in your own home, living independently.

www.heart4helpingseniors.com

©2013 Seniors Helping Seniors. Each office is independently owned and operated. All trademarks are registered trademarks of Corporate Mutual Resources Inc. Not all services are available in all areas.



One call handles it all

PLUMBING | HEATING | COOLING
ELECTRICAL | WATER CONDITIONING
AUDIO/VISUAL & AUTOMATION



CONTRACTORS OF THE YEAR

Hallerent.com
888.625.1500

PA1867

The Bacon Press

BREAKFAST & LUNCH

Monday - Friday
7 AM - 3 PM
Saturday - Sunday
7 AM - 2:30 PM

235 Lancaster Ave
Lincoln Shopping Center
Malvern, PA 19355
Phone 484-328-3118



Always FREE COFFEE for Hershey's Mill residents
(with purchase of entrée)
Bring in this coupon to get your VIP Card with HM coffee stamp.



The best care comes in the comfort of home.

BAYADA Home Health Care provides nursing and assistive care 24 hours, 7 days to keep people of all ages safe at home.
Call 610-255-7307 | www.bayada.com



Compassion. Excellence. Reliability.

DECK TOO HOT?

A STATIONARY AWNING OR RETRACTABLE AWNING CAN DOUBLE THE USE OF YOUR DECK. ALL AWNINGS ARE CUSTOM MADE IN OUR SHOP FOR THE GREATEST SAVINGS — TO YOU!

INSTALLATIONS - ESTIMATES ARE ALWAYS FREE
AWNINGS • TENT RENTALS
BACK LIT AWNINGS • SINCE 1928

call 302-652-6612

E.W. BROWN, Inc.

Humpty Dumpty Had a Great Fall.

www.SafeBathCo.com



Install Grab Bars.
Call Now 610-696-1693

Rick Herschel | BOD Member | Kennett

New Facilities Principles

Six Principles For The Design & Building Of New Facilities At Hershey's Mill

Architecture shows our values and how we think of ourselves.

Accessibility, Safety & Security

The design and construction of accessible, safe, and secure facilities is a primary goal for new Hershey's Mill (HM) construction. Accessibility, safety, and security measures will depend on specific requirements, acceptable levels of risk, the cost-effectiveness of the measures proposed for total design efficiency, evaluation of life cycle costs, and the impact these measures have on the design, construction, and use of a new facility.

Conformity

New construction will meet the appropriate building codes and be in synch

with other Hershey's Mill facility design principles. HM understands the importance of codes and standards, which is why it partners with government entities to navigate the dynamic regulatory environment to help identify solutions to improve the environmental and resource performance of HM buildings.

Cost-Effectiveness

Design and construction financing will be realistic and conservative; yet will not compromise the quality of new construction. HM will pursue building design that is cost-effective when it results in benefits equal to those

of alternative designs yet has a lower whole life cost, or total cost of ownership.

Form

Any new facility will be consistent with the aesthetic values of the community and be in harmony with its surroundings. New architectural design will be consistent with the Hershey's Mill image of quality, balance, proportion, appropriate embellishments, and congruity with the environment.

Functionality

A clear understanding of the functional and physical requirements of a project is essential to ensuring its success. A facility that functions as it is intended is the underpinning of a quality "whole" building. HM will seek facility designs that will provide coherent space that is attractive yet highly usable. New buildings will meet predefined functional design goals with allowance for future expansion, if foreseen.

Sustainability

HM embraces sustainability of design in new facilities. Sustainable building design and construction is the practice of

creating structures and using processes that are environmentally responsible and resource efficient throughout the life cycle of a building – from selecting the site to design, construction, operation, maintenance, renovation, and finally, deconstruction. Sustainable building expands on and complements the classical building design considerations of economy, utility, durability, and comfort.

Approved March 26, 2015



Deck Protect Plus LLC
Specializing in cleaning and weatherproofing all exterior woods.
The *plus* equals professional handyman services.
610-202-0724
deckprotectplusllc.com

BREWER HVAC
Since 1938
HEATING & AIR CONDITIONING
We Have Certified 24/7 Technicians
On Call for Your Home Emergencies
Sales • Service • Installation • GeoThermal

Plumbing Services Available Now
Serving West Chester for 4 generations as your neighborhood contractor.
HM Residents - Mention this ad and receive 10% off new service contracts!
Ask about rebates, credits & financing.
610-692-5252
www.brewersheatandair.com

TRIPS ARE LISTED IN
CHRONOLOGICAL ORDER

**Philadelphia Orchestra -
"Bernstein's Mass"**

Friday, May 1, 2015
Cost: \$14 + Admission
Departs: 6:00pm
Contact: Ann Seraphin

Rarely performed due to the large resources required, Bernstein's Mass is truly a destination concert for audiences and participants alike. Only a few seats available, so call now to reserve your spot.

Reading Fightin' Phils & Fireworks

Saturday, May 2, 2015
Cost: \$24
Departs: 4:30pm
Contact: Marc Fraser

Join us for our first night of baseball in 2015! We will be traveling to FirstEnergy Stadium in Reading, proclaimed by *Stadium Journey Magazine* to be "... easily one of the best parks in the minor leagues at any level

The HM Bus Committee is always looking for more volunteers to share ideas and plan trips! If interested, call Marc Fraser at

All bus riders must be age 18 or older (unless specifically noted in description).

Trip payment checks should be made payable to "Hershey's Mill HOA".

Bus leaves promptly at the scheduled time. Please plan to arrive 10 minutes early.

and by nearly any criteria," to watch the Reading Fightin' Phils. This AA minor league affiliate of the Philadelphia Phillies will be taking on the Portland Sea Dogs for a 6pm game. After the game, we will stay to watch MegaBlast III, one of the largest fireworks shows in stadium history. In addition, Scott Rolen, longtime third baseman of the Philadelphia Phillies, and Dan Held will be on hand to be inducted into the Reading Baseball Hall of Fame. Our seats are located in the Section 5 yellow box seats directly behind home plate. Food is on your own at one of the many ballpark concessions. *Children age 8 and older are welcome.*

Penn's Peak - "Branson Fever"

Wednesday, May 6, 2015
Cost: \$62
Departs: 9:00am
Contact: Ann McClay

Experience family dining at Penn's Peak while enjoying a performance of *Branson Fever*. The show features Dave Rehrig of Twitty Fever, the comedy of Crazy Elmer, and a tribute to Dolly Parton! They'll entertain you with favorites like "It's Only Make Believe," "Hello Darlin'," "You've Never Been This Far Before," "I Will Always Love You," "Jolene," "9 to 5," and more. Combine these chart-topping hits with the knee-slappin' comedy of Crazy Elmer, and you've got yourself one sure-fire afternoon of music and fun, country style! From this famous mountaintop venue you will also enjoy a breathtaking overlook of nearby Beltzville Lake, plus a commanding, picturesque 50-mile panoramic view of northeastern Pennsylvania's Appalachian Mountains. Lunch and show are included in the price.



Penn's Peak - "A Tribute To Elvis"

Tuesday, May 12, 2015
Cost: \$66
Departs: 9:00am
Contact: Ann McClay

Experience family dining and live entertainment at *Mike Albert & the Big E Band: A Tribute to Elvis*. Mike Albert's "Ultimate Tribute" show has become known worldwide for the respectful portrayal of the late Elvis Presley. Mike won several major world Elvis contests and demand for his shows resulted in a seven piece Big "E" Band, to emulate the sound Elvis' band had in the Vegas shows and on tour. Mike's powerful voice lends itself well to every type of Elvis' music - 50s, 60s, and 70s rock and roll and love songs, as well as gospel; he sings it all! There is also a breathtaking overlook of nearby Beltzville Lake, plus a commanding, picturesque 50-mile panoramic view of northeastern Pennsylvania's Appalachian mountains. Lunch and show are included in the price.

Continued on next page



Fightins



Save all the Dates!
 May 1, 2, 6, 12, 13, 25, 28, 29
 June 6, 7, 8, 19, 22
 July 18

Walnut Street Theatre - "Memphis"

Thursday, May 28, 2015
Saturday, June 6, 2015
 Cost: \$40
 Departs: 12:30pm
 Contact: Ruth Sugar (5/28 show)



Contact: Connie Cline (6/6 show)

From the underground dance clubs of 1950s Memphis comes a musical that bursts off the stage with explosive dancing, irresistible songs and a thrilling tale of fame and forbidden love. Inspired by actual events, Memphis is about a radio DJ who wants to change the world and a club singer who is ready for her big break.

Philadelphia Phillies

Friday, May 29, 2015
 Cost: \$49
 Departs: 4:45pm
 Contact: Priscilla Burt

Join us for an evening of baseball at Citizen's Bank Park as we watch our Philadelphia Phillies take on the Colorado Rockies in a 7:05pm game! Tickets have been pre-purchased, and seating this season has been upgraded to Sec-

tion 211. Food is on your own at one of the many ballpark concessions. *Children age 8 and older are welcome.*

Schuylkill Riverboat Tour & Bartram's Garden

Sunday, June 7, 2015
 Cost: \$55
 Departs: 10:00am
 Contact: Priscilla Burt

Enjoy our one-hour boat tour that highlights the past, present, and future of the Hidden River. The tour departs from Walnut Street Dock aboard The Patriot, a U.S. Coast Guard approved vessel; this is a reproduction of a 1920's commuter yacht. The vessel features wrap around seating, bar, restroom, and a sheltered, open stern. We will cruise to Bartram's Garden, home of America's first great botanist, for a picnic lunch in the covered pavilion. This will be followed by a self-guided tour of the historic garden, community farm, and recreational trail. The tour offers a setting and experience unlike any other in Philadelphia.

New York City

Wednesday, June 19, 2015
 Cost: \$29
 Departs: 8:00am
 Contact: Bobbi Rubenstein

It's spring, and "NYC on your own" is back by popular demand! Our bus driver drops us off in the Theater District and picks us up at the same place at 7pm for the ride home. You spend your day doing whatever *you* choose to do in this wonderful city! Meals are on your own.

Guide Dog School - Morristown, NJ

Saturday, July 18, 2015
 Cost: \$67
 Departs: 7:30am
 Contact: Joan Wood

Join us for a visit to the world's oldest, and internationally renowned, Guide Dog School located in historic Morristown, New Jersey. We'll tour the facility and attend a presentation describing the outstanding work of this non-profit organization. Lunch will follow at the Black Horse Tavern; established during the 18th century. Cost includes lunch, taxes, gratuities, and a donation to the Seeing Eye School.

DuPont Theatre - "Guys & Dolls"

Wednesday, May 13, 2015
 Cost: \$14 + Ticket
 Departs: 12:30pm
 Contact: Ruth Sugar

This Damon Runyon oddball romantic comedy, set in his mythical New York City, soars with the spirit of Broadway! The cost is bus only and ticket must be purchased on your own.

Delaware Park

Monday, May 25, 2015
Monday, June 8, 2015
Monday, June 22, 2015
 Cost: \$14 + Lunch
 Departs: 10:15am
 Contact: B.J. VanSchooneveld

Join us for an exciting day at the races! Watch the horse racing (beginning 5/26) or try your luck at slots and table games. \$30 free slots play is given to everyone on the bus. Lunch is on your own.



ENTER
FOR YOUR
CHANCE
TO WIN!



TICKETS
ON SALE
NOW!

FUNDRAISER RAFFLE

Gourmet Dinner with Wine Pairing

Winner will enjoy...

- **What:** Dinner for you and nine (9) of your guests
- **Where:** The Historic Sullivan House, Hershey's Mill, West Chester
- **When:** Date of your choice before 12/31/15
- **Hosted by:** FoSH (Friends of Sullivan House)
- **Catered by:** Brandywine Catering
- **Cost of Ticket:** \$30.⁰⁰
- **Drawing:** At the Hershey's Mill Summer Concert Series on June 14, 2015 (Raindate: 6/28/15)

Winner does not need to be present at drawing to win. Checks payable to: Sullivan House Fund
All proceeds go to support the preservation of Historic Sullivan House



For info and to buy tickets...

Shauna Flynn at

or Ann Gunn

HM SINGERS' SPRING CONCERT

Indeed, we are so fortunate to live in a wonderful world in many ways. Come celebrate spring and this wonderful world with the Hershey's Mill Singers at their spring concert.

"The Millers" singing group, and the women's quintet "The Hershey's Missus," will sing special selections for you; along with other surprises.

What A Wonderful World!

*Hershey's Mill Singers'
Spring Concert*

June 7, 4 pm

**Saints Peter and Paul
Roman Catholic Church**
1325 E. Boot Road
West Chester



For those needing help finding the location, the church is on Boot Road just outside Hershey's Mill. Exit the Mill gate next to the Giant and turn right onto Boot. Just after Wellington, turn right into the church parking lot. The church has a huge sanctuary, so no need to worry that we won't have enough seats. The parking lot can also accommodate all cars.

The concert is free but donations are appreciated.

Join us for the music and fun, and to help us welcome our new director, Steve Patchel. If you have questions please contact the Singers' president, Bonalyn Mosteller, at or

VOTED #1 FLOORING STORE BY MAIN LINE & DAILY LOCAL READERS



Where
PERSONAL SERVICE Makes the DIFFERENCE

705 E. Gay Street ■ West Chester
www.BoylesFlooring.com ■ 610-429-9773





heating | air conditioning | geothermal

Comfort, Safety, Savings
Dependable Service

24/7

610-738-8310

www.Signaturehvac.com

\$49 Precision
Tune Up

Free Diagnostic
With Any
Repair!

\$1000 OFF a Qualifying System
Installation

PLUS 0% Financing
For 36 Months

Call Today And
Take Advantage
Of Our
Special Hershey's Mill Pricing



RESIDENT DIRECTORY CHANGES

Colson, David & Margaret
(new #)

Heleva, Michael & Patryce

Reyes, Petra

Davis, Gordon

Kohler, John & Kathy
(new #)

Slack, N. Harlan & Kristin

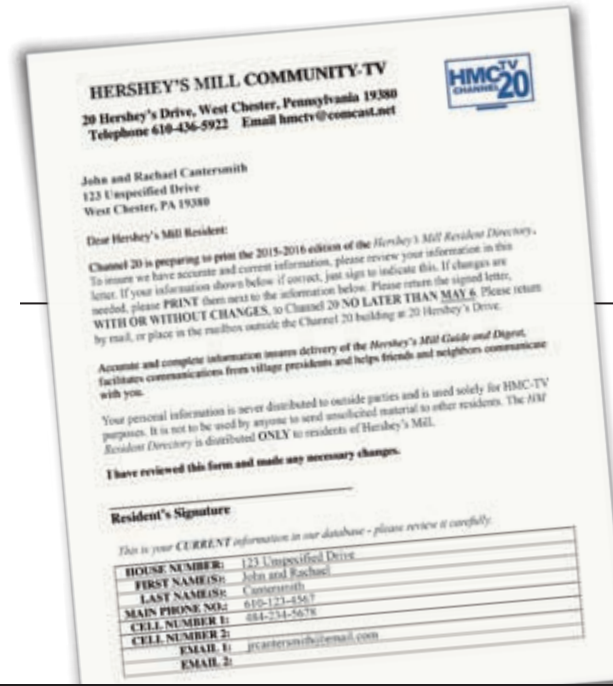
Harnwell, Gordon
(new #)

McCoy, Sandra
(new #)

Slevin, Edward & Kay

Trabbold, Lynn, Melissa, and
Christopher

Worrall, John & Moran, Janet



A letter similar to the one shown here has been sent to all HM residents. Please review and return, with changes if necessary, no later than the date indicated. This important contact information is needed for the HM Resident Directory and delivery of the Guide and Digest. Thank you!

Save on Medicare Insurance!
Rates for Women Start at \$104/mo. for Plan N.
You Can Switch & Save Anytime!

Call HM's Joe Murphy at 610-918-0590
for a FREE QUOTE.

Gay Barry | Quaker

Anyone who has lived in the West Chester area for a while is familiar with the name Spence as in restaurant. But if we had a life span of more than a hundred years, we would have known the very same thing. For if you walked down Gay Street you certainly would recognize the salty smell of seafood – cooked shellfish to be exact. From 1849 to 1910, the Spence family



restaurant was considered the best in town. “Specializing in oysters, fried clams, snapper soup and excellent chowder, spiced with horseradish grown in the restaurant’s basement,” it was said.

Until a few years ago, the Spence Café, open for 15 years, was housed in the very same building. You may remember that the first floor had two dining areas separated by an enclosed stairway to the second floor. This was designed purposely so that the right side was open to ladies. On the left was the saloon bar open to “gents” only. Oh the good, old days.

Chef Andrew Patten owned and operated that restaurant; and now he has brought that same know-how to Spence

312. Patten is excited that Spence 312 is a BYOB. “I’m concentrating on the food and dinner only,” he said. Baked Lancaster goat cheese gets high marks as an appetizer. And his delicious short ribs are braised for four hours. These are just two of the favorites on the menu. The focaccia bread and soup stocks are all hand crafted. Somewhat amazing is that Chef Patten also makes all of the desserts. He is a busy man in the kitchen. Fortunately, he does have a sous chef.

Spence 312 is committed to using organic and locally grown produce, and sustainable meat and seafood, whenever possible. We are fortunate to be living in an



area where “fresh” everything is possible. Agriculture continues to thrive in Lancaster County where the farms are maintained so beautifully and stir the soul. The pride in farming is just a stone’s throw from Hershey’s Mill. We can count our blessings.

Golden-colored walls feature impressive paintings and soft lighting allows for a calming atmosphere. In the background one can hear the voices of Frank Sinatra, Louis Armstrong, Nat King

Cole and other crooners; the sounds from when music was music. Our server Michael was fun and helpful.

The menu offers small plates, greens, full plates, sides and desserts. The servings are generous but not overwhelming. Both Jack and I, and our friend, took home a



special care in preparation is the goal. Jack had boneless short ribs with red wine demi-glace and a choice of fingerling potatoes, cauliflower, or parsnip puree – his choice. Our friend and I had braised chicken in phyllo accompanied with spinach, orange and fennel salad. This is recommended highly. Other choices are seared scallops, cioppino, steak fritz, and a grilled pork chop with maple brine, apple fig chutney and rosemary polenta.

A wide choice of house-made desserts are so tempting. We three shared one – a baked apple cake

portion of our entrée; they were still tasty the next day.

Signature dishes in small plates include the baked goat cheese and seasonal grilled flat bread. In keeping with the original Spence of the 1800s, chilled oysters on the half shell are offered as well as grilled marinated shrimp. Middle neck clams with garlic, white wine and lemon butter, as well as steamed mussels, round out the seafood small plates selections. Three salads are available and also soup of the day. The hearts of romaine salad, spiced with roasted walnuts, Maytag bleu cheese and red onion dressed with balsamic vinaigrette, is delightful.

For entrées there is something that should please everyone. There are a limited but reasonable number of selections which, to me, means that

Spence 312

(610) 738-8844
312 South High Street
West Chester

with caramel ice cream and fresh fruit – the platter was “licked clean.”

In the spring, Spence 312 will open the back patio, which will seat about 50 people. There is also a private room upstairs that can be used for parties. Spence 312 is an upscale BYOB, and reservations are suggested. It is open for dinner Tuesday through Saturday.

Spence 312 is an excellent addition to West Chester, a destination already known for its exceptional restaurants. Spence 312 was recommended to us by friends, and we are so happy it was.

Stowers Handyman Service LLC

Home Maintenance & Repairs

- Carpentry
 - Painting
 - Drywall Repair
 - Tile Grouting
 - Tub Caulking
 - Window Repair
 - Furniture Moving
 - Hand Rails Installed
 - Floor Repair
 - Kitchen Faucets
- and lots more!

Resident handyman serving
all Hershey's Mill villages

Call Dan Stowers
484-467-3361

Fully Insured
Reg. # PA 061617



**10%
Discount
with
this ad**

BUCKLEY, BRION, MCGUIRE & MORRIS LLP
IS PROUD TO HAVE SERVED
HERSHEY'S MILL SINCE 1983



**BUCKLEY BRION
MCGUIRE & MORRIS LLP**

- ~ Wills & Trusts ~
- ~ Estate Administration & Real Estate ~
- ~ Personal Injury, Medical Malpractice ~
- ~ Accident Cases ~
- ~ Miscellaneous Legal Matters ~

FOR INFORMATION CALL ANTHONY MORRIS
PHONE: (610)436-4400, EXT. 103 OR
EMAIL: AMORRIS@BUCKLEYLLP.COM
118 W. MARKET STREET, SUITE 300
WEST CHESTER, PA 19382-2928



Move to Freedom Village, and you'll move on to "Five-star" healthcare.

Freedom Village at Brandywine is the best of both worlds – the convenience and amenities of communities such as Hershey's Mill but now with FIVE-STAR healthcare. We deliver exceptional Independent Living, Assisted Senior Living, Alzheimer's and Dementia Care and Skilled Nursing Care options for you or your loved ones.

We're located in historic Chester County, adjacent to the Brandywine Hospital and its comprehensive medical services. Plus, you'll be minutes away from shopping, theaters, fine dining options and the Applecross Country Club golf course.

Within our community, you'll find woodworking and billiards, aerobics, gardening, indoor swimming and educational events.

We're proud to provide FIVE-STAR healthcare with a high quality of life and the highest levels of care and caring.

**Call 1-866-287-3072 to arrange a tour, meet our residents,
have lunch or dinner and see our brand new renovations.**



Freedom Village Brandywine
A Life Care Community
15 Freedom Boulevard
West Brandywine, Pennsylvania 19320

brookdale.com



Brookdale® and ALL THE PLACES LIFE CAN GO™ are trademarks of Brookdale Senior Living Inc., Nashville, TN, USA. © Reg. U.S. Patent and TM Office. 14-71181-2359-1115-LS

John S. Rice
**JEWELER
INC.**

- Custom Jewelry Design
- Re-mounting
- Repairs performed on-premises
- Appraisals

*10% off all new purchases
to residents of Hershey's Mill*

FRAZER SHOPPING CENTER
BUSINESS RT. 30 • FRAZER, PA 19355
610-647-6168

 **MacLaren**
Kitchen and Bath



Countertop Replacements In One Day!

Visit our Showroom For:
Granite, Corian, and Quartz
Cabinet Design and Sales
Tile Backsplashes
Sinks and Faucets

We're Just Around the Corner
Monday- Friday 8am- 4:30pm
Saturday 10am-2pm

610-436-5436
www.maclarenfab.com
1135 Phoenixville Pike West Chester, PA

Joe Kennedy | Princeton

In March 1898, Samuel W. Pennypacker wrote to Henry Mercer about Mercer's publication of a paper on Fraktur, the hand-printed and brightly colored works of Pennsylvania German folk art often used as family documents. Though Pennypacker found the paper interesting, he suggested that before Mercer had written on the subject he should have talked to him and seen his collection of Frakturs.

This was the beginning of an 18-year correspondence between two of the leading scholars of their day in our region. Pennypacker was a Philadelphian who spent his later years as a country squire on a Montgomery County estate; Mercer spent most of his life in Bucks County.



While Ella Aderman was administrator of the Pennypacker Mills historic site in Schwenksville, she edited 23 letters of the Pennypacker-Mercer correspondence from 1898 to 1916. These letters represented an

exchange of ideas on common interests between two Pennsylvania gentlemen of taste and offer insight into upper-class values of the time. Reading between the lines of these letters an impression is left that the men had developed, from afar, a personal admiration for each other, although at first glance their relationship appears unlikely.

Pennypacker had an outgoing, robust personality; he was a man

of action as well as of ideas, and was a well-known reform politician. Mercer, on the other hand, was aloof, arrogant, a big fish in a small pond and little known outside of Bucks County. Yet the men shared

Henry Mercer

an interest in the collection of local antiques and in local history. Each had written a number of books on these subjects.

Pennypacker was born in Phoenixville in 1843 into a middle-class family. He received his basic education from private schools in Philadelphia. In 1863, at age 20, he joined the 26th Emergency Regiment of the Pennsylvania Volunteers and saw combat at Gettysburg. After the war he earned a law

degree from the University of Pennsylvania and began a law practice in Philadelphia. In 1889 he was appointed a judge in the Court of Common Pleas. During this time he developed an interest in history. His writing led to the collection of art and pottery connected with colonial Pennsylvania. Pennypacker also embraced the Progressive Movement late in the 19th cen-



tury. This was a national bipartisan reform movement that opposed the undemocratic influence of big business into the political, economic and social life of the country. From 1903 to 1907 he was the conservative but reform-minded Republican governor of the commonwealth. During his administration he changed voting practices by passing laws regarding voter registration and election fraud. He also developed pure-food regulations, improved public roads and passed measures to conserve the state's forest and water resources. He retired to Pennypacker Mills, his estate in Mont-



gomery County, and lived as a country gentleman and elder statesman.

Henry C. Mercer was born in Doylestown in 1856 and was raised on his family's farm. As a young man, he inherited a fortune from a wealthy widowed aunt. At Harvard College, which he entered



Samuel Pennypacker

in 1875, he was an excellent student in art, architecture and history. By the time he was 30 he had traveled throughout Europe and the near East and had a knowledge and passion for archaeology. When he was 34 he took a full-time job as a manager with the University of Pennsylvania Museum of Science, where he spent several years involved in a field study, looking for

Continued on page 31



Get a Taste of Healthy Living at Riddle Village.

When you talk with senior adults about the quality of life at a retirement community, dining is always near the top of the list. Why? Well-prepared, healthy and tastefully presented menu options are part of the joy of living – and part of every day life at Riddle Village.

With a variety of on-site venues, including the newly renovated Garden Terrace, wholesome and delicious menu choices make dining at Riddle Village a healthy, relaxing, and highly enjoyable experience.

See for yourself. **For more information, and a personal tour, please call today: (610) 891-3700**



1048 West Baltimore Pike • Media, PA 19063 • (610) 891-3700 • www.riddlevillage.org

LeadingAge PA



MAG/HMGD/11-14

LOCAL HISTORY (continued)

evidence of people who lived in North America during the Ice Age.

In 1897 Mercer left the museum and became a legendary figure in Bucks County history. With the help of a few workers he built the Mercer Museum to house his collection of pre-1850 tools; his castle home, Fonthill and the Moravian Pottery & Tile Works, all in the Doylestown area. In addition, he was a great promoter of the work of the Bucks County Historical Society. When Pennypacker was governor, Mercer's tiles were installed in the rotunda of the Capitol.

"While there appears to be no documentation of how Mercer received that commission, Pennypacker did know Mercer ... and had used his tiles in his own home," Aderman wrote. To date

Aderman has uncovered no evidence that Pennypacker and Mercer ever met, although Mercer did visit Pennypacker Mills once – when Pennypacker wasn't there – to do some research on stove plates for his book *Bible in Iron*.

The last connection between these two men was in 1916 when Pennypacker was outspoken in his public support of Germany in World War I while the United States was still neutral. At the time Pennypacker was president of the Historical Society of Pennsylvania and there were members who wanted to vote him out. Mercer wrote a letter to the secretary of the society, supporting Pennypacker and cast his proxy vote for him. When Pennypacker died in September 1916 he was still president of the society. Mercer died in 1930.

Paoli Rug Co.

Since 1956



Rug Cleaning & Repair on Premises

610-644-7250

- Free Pickup & Delivery
- Best Selection of Wall to Wall and Oriental Rugs



www.paolirug.com

Monday	Tuesday	Wednesday	Thursday	Friday	Saturday	Sunday
<h1 style="text-align: center;">May 2015 Activities Calendar</h1>			30	1	2	3
				8:30am Aerobic Dancing/Exercise 10:00am Quilters 10:00am Ageless Exercise 12:30pm Billiards 1:00pm Pickleball Mah Jongg 4:15pm Line Dancing		
4	5	6	7	8	9	10
8:30am Aerobic Dancing/Exercise 10:00am Ageless Exercise 12:00pm (SH) Circle Of Friends 12:30pm Mah Jongg 12:30pm WH Duplicate Bridge 3:00pm Bridge 7:00pm Singers Rehearsal 7:00pm WH Duplicate Bridge	10:30am Hearing Screening 1:00pm Pinochle 1:00pm Mah Jongg 1:30pm Mah Jongg 3:00pm (SH) Railroad Club	7:30am Men's Bible Study 8:30am Aerobic Dancing/Exercise 9:30am Intermediate Bridge Lesson 10:00am Ageless Exercise 12:00pm Art Group 12:30pm Social Club Bridge 12:30pm Billiards 1:00pm Dominoes 7:00pm Casual Singing Group 7:00pm Ulster Open 7:30pm Mah Jongg	8:00am Paoli Hospital Aux Vendors 10:00am Alzheimer/Dementia Support Group 10:00am Yoga 12:30pm Billiards 1:00pm (SH) Chess Club 1:00pm Knitting Circle 2:00pm Card Games 6:30pm Poker 7:00pm Princeton Open 7:00pm Stress Management Class	8:30am Aerobic Dancing/Exercise 10:00am Quilters 10:00am Ageless Exercise 12:30pm Billiards 1:00pm Pickleball Mah Jongg 2:00pm Rummikub 4:15pm Line Dancing		
11	12	13	14	15	16	17
8:30am Aerobic Dancing/Exercise 10:00am Ageless Exercise 12:00pm (SH) Circle Of Friends 12:30pm Mah Jongg 12:30pm WH Duplicate Bridge 3:00pm Bridge 7:00pm Singers Rehearsal 7:00pm WH Duplicate Bridge	10:30am Hearing Screening 1:00pm Pinochle 1:00pm HM Maintenance 1:00pm Mah Jongg 1:30pm Mah Jongg 3:00pm (SH) Railroad Club 7:00pm PC Computer Club 7:00pm Jefferson Open 7:00pm (SH) Great Books Club	7:30am Men's Bible Study 8:30am Aerobic Dancing/Exercise 10:00am Ageless Exercise 12:00pm Art Group 12:30pm Billiards 1:00pm Dominoes 7:00pm HLN Open 7:30pm Mah Jongg	10:00am Yoga 11:30am Mermaid Book Club 12:30pm Billiards 1:00pm (SH) Chess Club 2:00pm Knitting Circle 2:00pm (SH) Books Discussion 3:00pm Card Games 3:00pm Vassar Open 6:00pm Princeton Party 6:30pm Poker 7:00pm Stress Management Class	8:30am Aerobic Dancing/Exercise 10:00am Quilters 10:00am Ageless Exercise 12:30pm Billiards 1:00pm Pickleball Mah Jongg 4:15pm Line Dancing		
18	19	20	21	22	23	24
8:30am Aerobic Dancing/Exercise 10:00am Ageless Exercise 12:00pm (SH) Circle Of Friends 12:30pm Mah Jongg 12:30pm WH Duplicate Bridge 3:00pm Bridge 7:00pm Singers Rehearsal 7:00pm WH Duplicate Bridge	Election Day 1:00pm Pinochle 1:00pm Mah Jongg 1:30pm Mah Jongg 3:00pm (SH) Railroad Club 7:00pm Investment Club	7:30am Men's Bible Study 8:30am Aerobic Dancing/Exercise 9:30am Intermediate Bridge Lesson 10:00am Ageless Exercise 12:00pm Art Group 12:30pm Social Club Bridge 12:30pm Billiards 1:00pm Dominoes 7:00pm Troon Open 7:00pm Springton Open 7:30pm Mah Jongg	10:00am Yoga 12:30pm Billiards 1:00pm (SH) Chess Club 1:00pm Knitting Circle 2:00pm Card Games 6:30pm Poker 7:00pm Glenwood Open 7:00pm Eaton Open 7:00pm Stress Management Class	8:30am Aerobic Dancing/Exercise 10:00am Quilters 10:00am Ageless Exercise 12:30pm Billiards 1:00pm Pickleball Mah Jongg 2:00pm Rummikub 4:15pm Line Dancing	10:00am Mac Group HM Pool Opens	
25	26	27	28	29	30	31
8:30am Aerobic Dancing/Exercise 10:00am Ageless Exercise (Cld) 12:00pm (SH) Circle Of Friends 12:30pm Mah Jongg 12:30pm WH Duplicate Bridge 3:00pm Bridge 7:00pm WH Duplicate Bridge	1:00pm Pinochle 1:00pm Mah Jongg 1:30pm Mah Jongg 3:00pm (SH) Railroad Club 7:00pm (SH) Great Books Club	7:30am Men's Bible Study 8:30am Aerobic Dancing/Exercise 10:00am Ageless Exercise 12:00pm Art Group 12:30pm Billiards 1:00pm Dominoes 7:00pm Kennett Open 7:30pm Mah Jongg	10:00am Yoga 12:30pm Billiards 1:00pm (SH) Chess Club 1:00pm Knitting Circle 2:00pm Card Games 6:30pm Poker 7:00pm Merrifield Open 7:00pm Stress Management Class 7:00pm Franklin Open	8:30am Aerobic Dancing/Exercise 10:00am Quilters 10:00am Ageless Exercise 12:30pm Billiards 1:00pm Pickleball Mah Jongg 7:00pm Bingo		SH is Sullivan House. Cld is cancelled. Dates and times subject to change. Contact program leader for details.

MADE EASY inc.

Deck Restoration

Established 1986, Fully Insured

DECKS

- Powerwashing
- Weatherproofing
- Staining
- Repairing
- Tear-down
- Rebuilding
- Resurfacing

CONCRETE

- Power-wash Concrete Patios
- Garage Floors Epoxy Coatings

PA Contractor's Register #068234

ASK
for the Special
Hershey's Mill
Discount

Hershey's Mill #1 Deck Restoration Company

- Over 2 Million Sq. Ft. Restored
- Over 600 Decks Restored in Hershey's Mill
- **PLUS** Community Pool Deck - tear down, rebuild & coat
- Walking trail benches - rails - bridges and more

610-827-7420

INSURED & BONDED
FREE ESTIMATES

**IF YOU WANT THE BEST - FORGET THE REST
CALL MADE EASY, INC TODAY**

Zagat Guide 2013

"Old World Charm...
Top Notch Service"



General Warren Inne

American Cuisine
Private Party Rooms
Live Music in Tavern
Elegant Guest Suites

9 Old Lancaster Rd Malvern, PA
610-296-3637
www.generalwarren.com

15% Food Discount at Lunch
for all Hershey's Mill residents
11:30am - 2:30pm Mon - Fri

Featuring Hunter Douglas & Other Manufacturers

BLINDS 4 U
610-246-3100

Shop At Home Service for Hershey's Mill.
We Will Beat Any Printed Installed Price!



- Silhouettes
- Luminettes
- Pleated & Honeycomb Shades
- Duettes
- Country Wood Blinds
- Plantation Shutters
- Mini Blinds
- Verticals
- Roman Shades

Free Quotes ❖ Measuring ❖ Installation
Bottom line pricing all the time!

Quality care you deserve, close to home.

When it comes to your family's health, you can trust the care of Paoli Hospital. We've grown from a seven-room facility to the County's only trauma center, investing in new facilities and technology and expanding our services and staff to meet your needs.

Our dedication to patient safety and excellence has been recognized by some of the nation's leading health care standards-setting organizations. We're proud to be the only hospital in the County with accreditations in *all* of the following:

Breast Cancer Care • Chest Pain • COPD • Hip and Knee Replacement
Sleep Disorders • Stroke • Trauma

With many of our physicians and services available at the Main Line Health Centers in Collegeville and at the Exton Square Mall, quality care has never been more convenient.

1.866.CALL.MLH
mainlinehealth.org/paoli



Paoli Hospital
Main Line Health®

Well ahead.®



Membership on the medical staff of a Main Line Health hospital does not constitute an employment or agency relationship.

DONATION DAY

Helen Ziegler | Franklin

The Hershey's Mill branch of the Paoli Hospital Auxiliary will host Donation Day on **Tuesday, June 2** from **9am to noon** at the HM Community Center. We accept clothes, jewelry, household items and small furniture. We do not accept items for men or children. Thanks in advance for supporting this important cause.

HM SPORTS GROUP

Reade Nimick | Lincoln

Well, sports fans, we hope you noticed that it's spring. You probably did when you got your electric bill that looked almost normal! And normal is also the operative word for all the sport activities at the HMSG "playground" near the Pool, which should be opening near the end of this month.

For tennis, we can report that Al Braverman has planned several round-robins (these began on April 18). Make sure to keep an eye out for these and join in. The time is **9:30am on Tuesdays, Fridays and Saturdays**. Note also that players should be in the 2.5-3.5 range. Need more information? Email Al at

(note that there is no "n" at the end of his email name).

For those that don't play tennis, many of the other activities are going strong as well. Bocce has tournaments in the making. Horseshoes is looking for "ringers." And shuffleboard is ready to continue what you were doing in Florida (or wherever you were). Enjoy!

HM HOME SALES REVIEW – FIRST QUARTER 2015

Lynne Carter | Kennett

Spring is here! As according to Mother Nature as well as the Hershey's Mill Real Estate Market. Sales through the end of the first quarter, March 31, 2015, total 14 properties. This equates to over \$4.7 million. Homes were on the market (DOM) an average of 34 days.

In addition to these 14 sales, another 10 homes are under contract awaiting settlement through the end of May. The average time from the sales contract to settlement day is negotiable between the buyer and seller; however this quarter's results reflect an average of 6-7 weeks.



We have 21 homes that are being actively marketed as of March 31; and 4 of these have a signed sales contract and are working on satisfying contingencies. This number has been increasing over the past few months as sellers are deciding to move to the next phase of their residential lifestyle. We continue to see a strong demand for HM homes of all varieties. There is a waiting list of buyers who are "ready now"

and just waiting for the HM home of their dreams to come to market.

Our Community Open House is on **May 3, 2015** from **1pm to 4pm**. This is the third year of this event and has proven to be an excellent way to showcase our Community, its amenities, lifestyle and home sites.

Tell your friends about Hershey's Mill.

EAST GOSHEN COMPREHENSIVE PLAN

Janet Emanuel | Inverness

A task force is on target to get the East Goshen Comprehensive Plan adopted before the end of 2015. On **Thursday, June 11 at 7pm**, at the Township Building, there will be a public meeting to present the Plan for comments. Prior to the meeting, the draft plan will be available on the East Goshen website (eastgoshen.org).

The Comprehensive Plan is a vision of what we want East Goshen to look like in the next 10 years, and how to accomplish that vision. Since we are



mostly built out, some of the main topics are development of a town center and a bicycle/pedestrian trail along Paoli Pike. The trail is part of the Chester County comprehensive plan.

The Township has received a grant for a feasibility study and

master plan for the Paoli Pike trail. A consultant has been hired and a committee formed. The plan will discuss possible placement of the trail, engineering, environmental concerns, traffic, and funding grants – among other points. The plan is expected to be presented by year end.



We Are NOT Happy, Unless YOU Are!

Count on Us to Provide Low Prices, Rapid Response & Service on All Major Brand Appliances

- Refrigerators
- Dishwashers
- Microwaves
- Ranges
- Ovens
- Washing Machines
- Dryers
- Freezers

Now Open

Toninos

PIZZA & PASTA CO.



10% DISCOUNT ON ENTREES FOR HERSHEY MILL RESIDENTS



Come enjoy our homemade pastas, pizzas, and signature Italian dishes

235 Lancaster Ave • Frazer PA • 610.240.9566 • www.toninospizzaandpasta.com

Looking for Daytime Senior Care?



We offer personalized care for dependent adults in our engaging, social environment. Treat your loved one to services from our expert nurses, therapists, and personal care assistants.

Adult Care
of Chester County, Inc.

Care from the Heart that's State of the Art

Kim, our Family Services Director, is available for consultations anytime.
610-363-8044

201 Sharp Lane, Exton PA • www.acofcc.org
Just 15 minutes from Hershey's Mill!

O'Brien
Heating & Air Conditioning
O'Comfort

60 YEARS OF "O'MAZING" SERVICE

- Fast Emergency Service -
- Service Agreements -
- Custom Installation -
- Water Heater Replacement -
- Duct Cleaning & Attic Insulation -



Call 610.696.7143
www.ocomfort.com

 MICHELLE AITKEN, DDS
SMILE SOLUTIONS
Exceptional Dentistry, Affordable Prices

HERSHEY'S MILL VIP DENTAL PLAN

\$199/yr

includes two cleanings, two exams, annual x-rays, plus a 15-25% discount off treatment

- **15% Discount for Hershey's Mill Residents**
(Compare our fees to other dental offices in the area . . . You'll be surprised!)
- **Most Insurance Plans Accepted**
- **In-home Service for Dentures and Partial**
- **Fast turn-around on Dentures and Partial**
- **Digital, Low-Radiation X-Rays**

HERSHEY'S MILL SPECIAL PRICING



ZOOM! Whitening (regularly \$750)	\$299
Crown	\$850
Custom Full Set Denture	\$1,750
Flexible Partial	\$1,050
Reline	\$185

Located in the Hershey's Mill Village Shopping Center
1381 E. Boot Road • West Chester, PA 19380
(610) 918.4995 • brilliantmilesdentalgroup.com

Original Programming	May 1-15, 2015			
Travels with Kay - Part 1 <i>With Demi Neilson</i> Kay Ricker visits Southeast Asia. First we discuss Myanmar (Burma), a country that only recently opened to tourism.	10:00 am	4:00 pm	7:00 pm	12 am
Travels with Kay - Part 2 <i>With Demi Neilson</i> Further discussion of visits to Southeast Asia; Singapore, Thailand, Malaysia and Indonesia.	10:15 am	4:15 pm	7:15 pm	12:15 am
HM Sports Group Spring Preview - Part 1 <i>With Demi Neilson</i> Demi interviews Helen Greco and Roger Karr about the tennis, pickleball and bocce activities that started this spring.	10:30 am	4:30 pm	7:30 pm	12:30 am
HM Sports Group Spring Preview - Part 2 <i>With Demi Neilson</i> Demi, Helen and Roger continue their discussion about sports activities and tournaments.	10:45 am	4:45 pm	7:45 pm	12:45 am

Movies Noon and 8:30pm	May 1-8 Desperately Seeking Susan (PG-13) <i>Rosanna Arquette and Madonna</i> A bored New Jersey housewife decides to spy on the free-spirited Susan. [Run time 1h44m]		
	May 9-15 The Elephant Man (PG) <i>John Hart and Anthony Hopkins</i> Based on the true story of a disfigured man in Victorian England working as a sideshow freak and the doctor who helps him. [Run time 2h3m]		

Bulletin Board	1:00am-10:00am	11:00am-Noon	Following the movie until 4:00pm
	5:00pm-7:00pm	8:00pm-8:30pm	Following the movie until Midnight

HMC-TV Channel 20 reserves the right to make program substitutions, and all dates and times are subject to change. The expressed opinions of reporters, guests, or advertisements in this publication or in any Channel 20 telecast shall not be construed as an endorsement by HMC-TV Channel 20. ©2015 HMC-TV

Original Programming	May 16-31, 2015			
East Goshen Historical Commission <i>With Ellen Carmody and Dolores Higgins</i> Artisans will be demonstrating the crafts of 1800 at historic Goshenville on Saturday, June 6.	10:00 am	4:00 pm	7:00 pm	12 am
Summer at the Pool - 2014 <i>With Sandy Loose</i> A look back at some Hershey's Mill Pool fun in 2014. A slide show courtesy of Sandy Loose.	10:15 am	4:15 pm	7:15 pm	12:15 am
Summer at the Pool - 2015 <i>With Carol Campanelli</i> Join Donna Dufoe and Sandy Loose for a preview of the fun things planned for Summer 2015.	10:30 am	4:30 pm	7:30 pm	12:30 am
Death Knell V <i>With Lee McCarthy</i> The fifth publication of a short story murder mysteries collection written by authors who live in the Delaware Valley. Two authors, J. D. Shaw and K. B. Inglee, are interviewed.	10:45 am	4:45 pm	7:45 pm	12:45 am

Movies Noon and 8:30pm	May 16-23 My Best Friend's Wedding (PG-13) <i>Julia Roberts and Dermot Mulroney</i> A writer discovers she loves her long time male friend when he calls about his impending marriage. [Run time 1h45m]		
	May 24-31 Untamed Heart (PG-13) <i>Christian Slater and Marisa Tomei</i> A Minneapolis waitress with severe relationship problems falls for a quiet busboy with a medical condition. [Run time 1h42m]		

To view Channel 20's original programming on your computer:

Go to hersheysmill.org. Select TV & Digest, HMC-TV20, and Original Programming.

To view or print the HM cable channels:

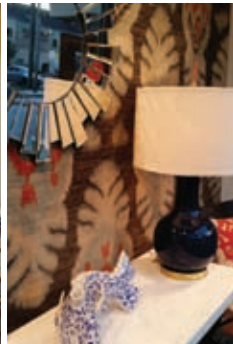
Go to hersheysmill.org. Select TV & Digest, Cable & Comcast. Choose a basic or full channel listing.



KNOTS & WEAVES

DECORATIVE RUGS • HOME DECOR

FOLLOW OUR STEPS
to finding eclectic home decor, including:

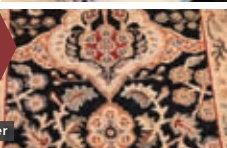


Vintage · Antique
Handcrafted · Art
Fashion · Jewelry
Estate Finds and
Monogrammed Gifts!

AWARD WINNING
selection of handwoven
wool area rugs to meet
every budget.
+ in home design services



RUG CLEANING!
Customers are shocked at how
great they look... like NEW!



WE WILL BUY YOUR... Rugs, Art, Ceramics, Furniture,
Antiques, Glassware, Figurines, Jewelry, Coins and more...

FREE PICKUP + DELIVERY (within a 10 mile radius
(Prices are based on size)

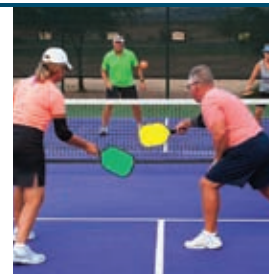
610.644.9192

218 East King Street | Malvern, PA

www.knotsandweaves.com



Dr. Theodore G. Mushlin
Dr. Bradford J. Jacobs
Dr. Chad J. Friedman
Dr. Alexandra K. Grulke
Dr. Aabha M. Suchak



Take a Step in the Right Direction

- Offering Professional Medical and Surgical Treatment of the Foot and Ankle.
- Ask about our Diabetic Shoe Program.
- Laser Treatment for Fungus Nails Available.

PodiatryCareSpecialists.com

WEST CHESTER (2 LOCATIONS)
• 1593 McDaniel Drive
• 795 E. Marshall St., Suite G2
West Chester, PA 19380
610-431-0200

AUDUBON
Seton Center
950 Forge Avenue, Suite 200
(Trooper Rd. & Forge Ave.)
Audubon, PA 19403
610-431-0200

NEWTOWN SQUARE
3319 West Chester Pike
at Surrey Drive
Newtown Square, PA 19073
610-356-5911

EXTON
Main Line Health Center
at Exton Square
153 Exton Square Parkway
Exton, PA 19341
610-431-0200

JULIETA CALMON



PATIENT ADVOCATE
(484) 802 1055

CALMONPATIENTADVOCATE.COM
CONTACT@CALMONPATIENTADVOCATE.COM

- RETIRED PHYSICIAN
- PROVIDES INDIVIDUALIZED CARE TO MEET SPECIFIC NEEDS
- ACCOMPANIES PATIENTS TO DOCTOR'S APPOINTMENTS
- HELPS COORDINATE POST-HOSPITAL CARE
- REVIEWS MEDICATIONS
- SPEAKS ENGLISH, PORTUGUESE & MEDICAL SPANISH



OLIVER
Comfort You Can Trust

Oliver Provides Fast, Reliable, Expert Service! If It Breaks, We Fix It.

For Superior Service and Comfort You Can Trust, call Oliver today!

- Heating
- Cooling
- Plumbing
- Electrical

610-616-5691
OliverHeatCool.com

SURREY
Services for Seniors

The Leader in Senior Care



Home Health Care
In-Home Services
Health & Wellness Programs
Housekeeping
Transportation

A non profit organization
serving the community
for 33 years.

610-647-9840 • www.surreyservices.org

Jerred Golden | Director of Grounds

In January of 2012, I attended a turf conference that changed the way we manage bunkers forever. It did not start out that way. I was in that session to hear a speaker on golf course architecture. I stayed for the next presenter, who happened to be Dan Meersman, the Golf Course Superintendent from the Philadel-

phia Cricket Club. Dan had just started a company called Matrix Bunker System and he was giving an overview of how the system worked. The Matrix system is comprised of porous asphalt that had been used for other commercial uses for decades but was tweaked for use with bunker sand. I left that talk convinced that the Matrix system was just what we needed to extend the life of our bunkers.

Golf is a lot of walking broken up by disappointment and bad arithmetic.

The Club has invested a ton of capital over the years rebuilding bunkers only to see them contaminated again with silt and rocks just a few years later. The contamination is caused by heavy rains washing the sand off the bunker face and exposing the clay liner to the

weather. The soil would mix with the sand and the drainage system would be compromised. We had tried fabric liners in the past, but they all had their drawbacks; not the least of which was that foxes like to dig them up.

In the months that followed, we talked to Dan and other golf courses that had the Matrix system installed and asked



about their experience with installation, maintenance and cost. We also looked at other pervious bunker systems but the Matrix had several benefits that the others did not. Most important to us was the flexibility of the installation timing. Matrix can go in any time of year from March

to almost December; which, for most years, works out well with our bunker construction schedule.

The nuts and bolts of the Matrix bunker construction are simple. We rebuild the bunker the same way the archi-

Now during a heavy rain the water quickly drains into the Matrix and exits the bunker through the drain pipes protecting the sand from contamination. The first bunkers using the Matrix system were constructed in

A New Way to Build Bunkers



tect designed it except we dig it four inches deeper to accommodate the Matrix. A two inch layer of drainage stone is placed over the finished bunker, then a two inch layer of the Matrix permeable asphalt goes on top of that. Once it cools and sets over night you place six inches of sand in and you are done.

2012, on the right side of 4 green and the fairway bunker on 2, and they are performing better that we had hoped for. Since then we have completed holes three and eight; and number one is coming this spring. It adds a couple of thousand dollars to the cost of each bunker but we recover that very quickly when you consider how much labor goes into shoveling the sand back onto the slope after a rain and the extended life we will get out of each project.

Golf Tip

The technology in today's equipment is simply awesome. The newest equipment can help your best shots; but more importantly, they should definitely improve your bad. However, most golfers may rely too much on this technology for their improvement, ignoring some basics of the game. First is the physical skill. Hitting the ball long and accurate, plus having touch around the green, can only come from hitting lots

of balls and playing lots of golf. Second is the mental side of the game. This means having the ability to maintain focus and manage your emotions throughout the round. Last is properly reading the elements. This consists of proper club selection, target line, and reading break on the greens. The latest and greatest can get you far, but for the rest of it you just need to get out and play!

Matt Harvey, PGA

May Club Activities

- May 2 Derby Day
- May 7 Steakhouse Night
- May 10 Mothers Day
- May 21 Trivia Night
- May 24 Memorial Day Cookout



For the Lifestyle You Deserve...

- Resort-style living in a retirement community with a continuum of care available
- Superior accommodations & amenities - Parking garage included
- Wide selection of independent apartments with balcony or patio and personal care suites. Private rooms for skilled nursing & rehab which was awarded a FIVE-STAR RATING!
- Owner managed, locally owned
- No Entrance Fee or Community Fee

For more information call 484-653-1200
www.wellingtonretirement.com



1361 Boot Road (Boot Road & Carriage Drive) • East Goshen • West Chester, PA 19380



Marlene is making a difference...

For Listing or Buying Real Estate call

Marlene Gulczynski, GRI, CRS, SRES, CSP

Life Gold PAR Excellence
 Seniors Real Estate Specialist

Call a **NEIGHBOR**

surrounded by her successes.



RE/MAX Main Line

Office: 610-640-9300

Direct Line: 610-701-9966

E-mail: Marlene@SoldbyMarleneG.com

CLASSIFIEDS

Ad deadline is the 22nd and runs two months at no cost (due to lead time, an ad received on January 22 would start in the March edition, etc.). Limit description to 30 words per item, and include pricing and contact information. Ads are subject to review and editing. Email submission to hmctvguide@comcast.net, attention Louise O'Brien, or place printed/typed copy in the Channel 20 mailbox outside the building. You must be a HM resident to advertise.

FOR SALE Cute 1992 red **Miata** with hardtop, 54,000 miles, in good condition, kept in garage, fun to "Cruz" the Mill. \$5,000. Call

FOR SALE Four **custom made cornices**. Two large, 75" width opening, perfect for triple window or slider. Two small, 36" width opening, ideal for single windows. Excellent condition, light peach color. Large are \$150 each. Small are \$100 each. Call

FOR SALE Moving and would like to sell items. Cherry wood **executive desk**. \$500. Leather **swivel chair**. \$100. Oak **roll top desk**. \$2,500. Any reasonable offer will be considered. Call Stephen at

FOR SALE Crate and Barrel cream colored queen size **wrought iron bed**. Crate and Barrel cream colored **end tables**. For Donegal's end unit loft room: **portable A/C**, 4 years old with window attachment for venting. Williamsburg brass **andirons plus log grate**. **Electric heater** looks like black wood stove. Over-the-mantle **mirror** with gold frame. Chinese **wall screen**. Small Sony **stereo CD/radio**, teak. 2009 **Honda CRV**, black, 32,000 miles; for sale in June. Call Sally at

FOR SALE One pair of beautiful pinched curtains & valance, Carolina blue, 82", custom made, soft pattern,

lined, rings included. \$75. Call

FOR SALE Oak, 4 piece **TV wall unit**, mantle on top. Center bottom cabinet for TV is 40" x 32 1/2". Two side glass door towers are 6.3" x 24" with bottom closed storage. \$250. Call

FOR SALE Professional quality **wood desk** with glass top and locks, 31" deep x 30" high x 60" wide. \$125. Bello **corner TV table**, polished metal frame, 3 glass shelves, like new, 21" deep x 43" wide x 24" high, purchased for \$226. \$95. **Freezer**, looks good and runs good. \$75. Call

FOR SALE Entertainment center; 52" x 15", 2 glass tier shelves with 2 drawer wood shelf and floating swivel TV mount or on top shelf mount, popular with birch veneer, like new. \$150 OBO. Call

FOR SALE Happy home wanted for **Mickey and Minnie Mouse memorabilia** straight from Disney World in Florida. Figurines, doll, some musical toys, etc. Kept under glass and never played with. Half price sale. Call

FREE Metal shelves for garage or basement. Call Sally at

FREE Accurate **medical scale**. Call

We Specialize in Making
Our Customers Happy!

CORDES CONTRACTING

40 Years of Experience & Craftsmanship

Proud
10 Year
Resident!

- An Expert in
Paint, Drywall
& Carpentry
- No Job Too Small or Too Large
- Proud to be the Contractor
of Choice at Applebrook
Golf Club

Tim Cordes
610-209-7268



Griswold
HOME CARE

State Licensed, Insured & Bonded
Proudly Serving Chester County for
Over 30 Years

Offering Non-Medical Services
Including: Personal Care,
Companionship,
Homemaking and More
Hourly \$17.50/hour (4 Hour
Minimum)
Live-In: \$175.00/Day
Call Our Office: 610-458-7100
www.griswoldhomecare.com

Serving Chester County

DONNELLY
HEATING & AIR CONDITIONING INC.
RESIDENTIAL & COMMERCIAL

SPRING SAVINGS

- \$69 Diagnostic Evaluations (New Customers)
- \$89 A/C & Heat Pump Cleanings (New Customers)
- EAP, PECO Rebates and Manufacturer Rebates
- Extended Parts & Labor Warranties
- We service all brands and models
- FREE Installation Estimates

610.399.1998

www.DonnelyHVAC.com

Donnellyhvac@verizon.net

Trusted & Affordable Dental Excellence

20% Senior Discount!

Call us today for more details.

This offer is not to be combined with any other discount.



480 Lancaster Avenue
• Frazer •
(610) 993-0444
www.FrazerDentalCare.com



LibertyWheels
Mobility for Everyone

CALL US AT — 267-765-1530

Mon-Fri 8AM—3PM or info@libertywheels.net

EV Rider—As seen on a local shopping network



CALL FOR PRICES!

Spring Is Here! Regain Your
Independence! - I DID!
Our Prices May Beat Any
Internet "White Glove"
Delivered Scooter Price!



PRIDE GOGO

Small enough to fit into most car
storage areas!

We Carry Pride - Golden - EV Rider Scooters

We carry portable & larger scooters
All Major Credit Cards Accepted
Our store is in Phila. —I live in Hershey's Mill
We will deliver to your home fully assembled!
We can not accept insurances or Medicare!

CLUBS/GROUPS ARE LISTED IN ALPHABETICAL ORDER

APPLE MAC CONNECTION

Carol Campanelli | Ulster

Bring your iPad, iPhone, laptop, and all Mac-related questions to the Hershey's Mill Community Center on the **4th Saturday of each month**. Bob Barton, from the Main Line Macintosh Users Group (www.mlmg.org), leads a question and answer session from **10am to noon** on the second floor. Coffee, tea and light refreshments are usually available.

If you missed Bob's early April Channel 20 interview explaining the basics of using your iPad, you can view the program, as well as additional tips, by watching the program on your computer. To do so, go to www.hersheysmill.org, select TV & Digest, HMC-TV20, and Original Programming; choose the programming for April 1-15, 2015.



ART GROUP

Dave Linton | Springton

We are a casual group with all levels of artistic talent who meet **Wednesdays from 12:30pm to 3pm** upstairs at the Community Center. Gather whatever art supplies you might have around and

join us. To see some of our artwork, check out the gallery areas on the first level of the Community Center near the ramp and kitchen.

BABY BOOMERS

Christy Herschel | Kennett

There will be a meeting of the club on **Saturday, May 10, at 4pm** in the Main Hall of the Community Center. Contact _____ for more information or go to hersheysmill.org/category/baby-boomers-club/.

BABY BOOMERS BOOK CLUB

Mary Kay Hagerty | Heatherton

The Boys in the Boat
by Daniel J. Brown

Nine working class American boys from the West Coast make the run to the 1936 Olympics. On **May 19**, join us in the Sullivan House for a lively discussion of this book. On June 16, we will discuss *Mary Coin* by Marissa Silver.

BOOK CLUB

Anne McAssey | Merrifield
Audene Paulson | Eaton

The Orphan Train
by Christina Baker Kline

Between 1854 and 1929, an Orphan Train travelled between the East Coast and the Midwest. Read the parallel stories of Vivian, an old woman who was an orphan, and Molly, a foster teen.

Visit us as we talk about this book on **May 14 at 2pm** at the Sullivan House.

CHESS CLUB

Miki Sugar | Quaker

Meetings of the club are on **Thursdays at 1:30pm** in the Sullivan House. New

members, or for additional information, please call Miki Sugar at _____.

COMPUTER CLUB

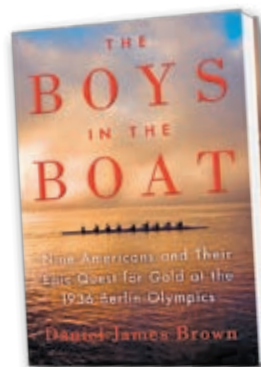
Don Trauger | Kennett

Be sure to attend the PC Club meeting **Tuesday, May 12 at 7pm** in the Ardmore Room of the Community Center. There is a new topic discussed each month, as well as a question and answer segment. So bring your questions and we will make an effort to get you answers.

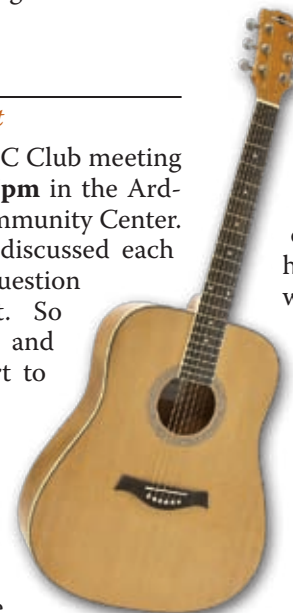
CASUAL SINGING GROUP

Sally Thompson | Franklin

I didn't think that the accompaniment for our casual singing group could get any better, but it did! We had guest accompanists with us in March – a husband and wife team that are friends



with the original editors of *Rise Up Singing* so they knew every tune we requested from that book. They, with their personally edited song book, have



agreed to join (whenever they can) the existing five that make such a great sound; so we will have the best of the best for each book of lyrics from which we might choose a song. We can have as much fun choosing a song as we do in singing it! Please join us whenever you can so we can make our voices heard above the guitars. People who think they "can't sing" may surprise themselves; when their voices blend in so well with the music that they don't have to worry about how "bad" they think they are – and they can just enjoy the party! Start the merry month of May off right, and join us on the top floor of the Community Center on **May 6 at 7pm**.

DOMINOES

Sheila DiCroce | Devon

Join us for Mexican train dominoes and some fun with your neighbors. We meet from **1pm to 3:30pm on Wednesdays** upstairs in the Community Center. For additional information call _____.

OPEN BUNCO

Agnes O'Leary | Eaton

Open Bunco meets the **second Tuesday of the month** through April (with the exception of November) at the Community Center Hall. All are welcome, so bring your friends and neighbors. A \$3 fee is paid at the door and used for prizes that night. **Doors open at 6:30pm** for socialization with the game promptly

Continued on page 53

Quality Care by Caring Professionals

We are committed to the philosophy that Barclay Friends must be a good place to work if it is to be a good place to live.

Barclay Friends

A KENDAL AFFILIATE Together, transforming the experience of aging.

A Continuing Care Community with Post-Acute Rehabilitation



"The staff at Barclay Friends is well-known for its longevity and reputation for care."
—Brooks Adams Research

700 N. Franklin Street
West Chester, PA 19380
610-696-5211
www.bf.kendal.org



©2012 The Kendal Corporation

EEO/ADA/LEP



ORIENTAL PEARL RESTAURANT

Sushi and Pan Asian Cuisine & **BYOB!**



SASHIMI DELUXE



MANGO CHICKEN & SHRIMP



PINEAPPLE CHICKEN & SHRIMP



OP SHRIMP & SCALLOPS

10% Off for H. Mill Residents

Goshen Village Shopping Center
1550 Paoli Pike • West Chester (Across from CVS)
610-692-5888 🍷 OrientalPearlwc.com

CLUB NEWS (continued)

starting at 7pm. Play stops at 8:30pm each night. We are hoping for a group of 40, so please email if you wish to attend. Walk-ins are welcome as long as we have room. Contact Pat Phillips at _____ or _____, or Barbara Harney at _____.

Pinocle is a fun game and provides healthy mental activity. Our members are patient and enjoy interacting with new members. If you would like more details about our club, please call our chairperson Erna at _____.

NEW PHOTO CLUB



PHOTOGRAPHY-CAMERA GROUP

Carol Poling | Oakmont

We are looking to start a new group for experienced and amateur photographers who would be interested in sharing their experiences, knowledge and photographs. If you are interested, please call Carol at _____.

PINOCLE CLUB

Erna Graham | Franklin

The club meets in the upper room of the Community Center on the **first and third Tuesdays** of each month, with play from **1pm to 3pm**. We are low key and welcome anyone who has previously played or would like to learn to play the game. We do not play for money, and we start promptly at 1pm.

STRESS MANAGEMENT

Anita Weeks | Kennett

There are 20 remedies that you might want to know about so that you could relax enough to have your body start healing itself. Our benefit is to use different parts of the brain with different remedies so that if one part of yourself is under stress you can find a remedy for it. Meditation is excellent, but if your body is carrying the stress you might want to use one of the physical remedies such as affirmations to have your physical self breathe better. Affirmations have a direct effect on the body. We meet in the Billiards Room on **Thursdays at 7pm**. Call Anita at _____ for more information.

Don Trauger | Kennett

If you have ever ventured into the Control Panel of a Windows 8.1 PC and clicked the Action Center icon (click View by: Large Icons) you will see two items, Security and Maintenance.

be. Here's what it does: It will check the hard drive for errors and defragment/optimize the drive. It also checks Windows Updates and runs a System Diagnostic, but it doesn't clean up or remove junk files (such as temporary Internet files and other unneeded files).

Using the Action Center in Windows 8.1

Security is handled partly by your anti-virus program and should show On, and On or OK for the other listed items. If you click Maintenance you can peruse Check for Solutions to Problem Reports, and within this category you can view the Privacy Statement, Settings, and View Reliability History. The first two items you can leave alone. The Reliability History will show you an interesting graph of your system's past problems. Clicking the various problems will allow you to view them in detail. Any consistent failure pattern should be reviewed and corrected.

Next is Automatic Maintenance. It's probably *not* what you think it may

It's up to the user to run CCleaner (my recommended free download program) and Microsoft's Disk Cleanup to perform the job correctly. Clicking Start Maintenance manually starts Automatic Maintenance (which would normally run when the system is idle). If you click Change Maintenance Settings you can change the time the Automatic Maintenance will start; providing the computer is turned on and is idle at that time.

Homegroup is only used when you have networked two or more computers for a file sharing requirement or for printer sharing.

File History is used when you want to back up your personal files. You can plug in a USB thumb drive or a USB external hard drive that will be used to back up your files. Once you assign the drive, the rest is automatic. I highly rec-

ommend using this feature. To use, click Change Settings or click the File History icon in the Control Panel. Click on Restore Personal Files to restore files to their original location by clicking the arrow in the green circle. Click Run Now to manually start a back up.

Drive Status is checked under the Automatic Maintenance routine and will indicate to you any problems it finds. Normally you should see OK and All Drives Are Working Properly.

Device Software checks the device drivers for proper operation. If a newer driver is available, you can click Windows Update (in the Control Panel) and click Optional Updates to down-

load and install. If the drivers are up to date and working properly, you should see No Action Needed.



With regard to Automatic Maintenance, my conclusion is that this is a misnomer since it leaves an important part of the maintenance up to you. However, running CCleaner and the Disk Cleanup programs *in conjunction with* Automatic Maintenance should keep your computer in good shape.

To help with questions about this topic, or any PC subject, the PC Club meets on the second Tuesday of every month at 7pm upstairs in the Ardmore room of the Community Center.

PIANO LESSONS

KEYBOARD/PIANO LESSONS IN YOUR HOME
LEARN TO PLAY THE SONGS THAT YOU LOVE
BEGINNERS TO ADVANCED LEVELS

CALL JAY CHADWICK
610.220.4907
MUSICZONE1@AOL.COM

Kevin Free
"the ultimate handyman"

General Home Repair

Painting/Wallpapering (including decorative) • Carpentry • Power Wash/Stain Decks
Minor Electrical • Tile Work • Masonry • and Much More

"No job is too small"

610-613-0928

Free Estimates email: dkevinfree@aol.com Senior Discounts
Conveniently located in Malvern, PA



Franklin Auto Spa

Premium service to help protect the life and look of your car.

Wednesdays are LADIES DAY!

25% off ANY CAR WASH

Tuesdays SENIOR DAY!
50% off
Any Wash

535 Lancaster Ave.

Frazer, PA 19355

Phone: (610) 296-9000

Washes:

-  **Lightning Strike - \$24 (incl. tax)**
Take Flight Wash + - Durashield® U.V. Protectant
- 72 Hour Guarantee - Lava Wax Polish
-  **Take Flight - \$20 (incl. tax)**
Turn Key Wash + - Tire Shine
- Triple Spot Free Rinse - Colorcoat® Triple Foam
- Durashield® U.V. Protectant
-  **Turn Key - \$17 (incl. tax)**
Ben's Basic Wash + - Guard Dog® Undercarriage
- 2 Step Wheel Cleaning
-  **Ben's Basic - \$14 (incl. tax)**
Exterior Wash + - Interior Vacuuming
- Dash Wiped Clean - Windows Cleaned
- 1 Step Wheel Cleaning
-  **Exterior Wash - \$9 (incl. Tax)**
- Exterior Wash - Towel Dry 

www.franklinautospa.com

Mold removal • Sump pumps installed
Emergency clean up • Foundation crack repairs

LEAKY BASEMENT?

Don't Get Soaked!

FOREVER DRY

Basement & Waterproofing

610-304-1342

PA055156

R. David Warner • foreverdry@att.net

HM LIBRARY NEWS

ASSORTED NEWS

Donna Spoto | Ulster

Thank you volunteers! The library can't function without your help. There are many ways you can help at the library which could include book covering, reading our book list which helps select some of the books we purchase, and working the desk during library hours.

We continue to get ready for our annual book sale September 12 and 13. Books in good condition are being accepted. DVDs, audio books, and puzzles (all pieces only, please) are also needed.

Become a Friend of the Library for 2015. For a yearly donation of \$5 or more, you can attend the preview reception Friday, September 11. Donate at the library when you came to see our new acquisitions. We look forward to having you read our new acquisitions.

NEW LIBRARY BOOKS

Peggy McReynolds | Yardley Librarian

Alphabetical by Author

Archer, Jeffrey – *Mightier Than the Sword*

Berney, Lou – *Long and Faraway Gone*

Box, C.J. – *Endangered*

Brandt, Harry – *Whites*

Caldwell, Ian – *Fifth Gospel*

Chiaverini, Jennifer – *Mrs. Grant and Madame Julie*

Cook, Josh – *Exaggerated*

Cussler, Clive – *Assassin*

Evans, Richard Paul – *Road to Grace*

Evans, Richard Paul – *Step of Faith*

Community Center Library Hours

Monday to Friday 10am-2pm

Saturday 10am-Noon

www.hmlibrary.com

Flanders, Judith – *Murder of Magpies*
Fluke, Joanne – *Double Fudge Brownie Murder*

Gaynor, Hazel – *Memory of Violets*

Gifford, Bill – *Spring Chicken*

Grisham, John – *Gray Mountain*

Ishiguro, Kazuo – *Buried Giants*

Kanon, Joseph – *Leaving Berlin*

Larson, Eric – *Dead Wake*

Thank You Volunteers!

Lehane, Dennis – *World Gone By*

Llosa, Mario Vargas – *Discreet Hero*

McCall Smith, Alexander – *Bertie's Guide to Life and Mothers*

McKinty, Adrian – *Gun Street Girl*

Nicholson, William – *Amherst*

O'Reilly, Bill – *Killing Patton*

Pataki, Allison – *Accidental Empress*

Reardon, Bryan – *Finding Jake*

Robb, J.D. – *Obsession in Death*

Robinson, Edna – *Trouble With the Truth*

Russell, Mary Doria – *Epitaph*

Steel, Danielle – *Prodigal Son*

Steinhauer, Olen – *All the Old Knives*

Swierczynski, Duane – *Canary*

Tyler, Ann – *Spool of Blue Thread*

Yanagihara, Hanya – *A Little Life*

Zander, Joakim – *Swimmer*



DEB DORSEY

610-724-2880

deb@debdorsey.com

JEAN BELL

610-213-5337

jean.bell@foxroach.com

DAVE DORSEY

610-724-2879

dave@debdorsey.com

Jean Bell and The Dorsey Team Real Estate Professionals and your Neighbors in Hershey's Mill

As residents of Hershey's Mill and dedicated Real Estate professionals serving the surrounding communities, our combined real estate knowledge, professionalism and expertise will serve you well.

We are always available for any of your real estate needs both in Hershey's Mill and elsewhere.

www.debdorsey.com



BERKSHIRE HATHAWAY
HomeServices

Fox & Roach, REALTORS®

Area's #1 Real Estate Company • Rosemont Station Office • 610-527-6400

© 2013 BHH Affiliates, LLC. An independently operated subsidiary of HomeServices of America, Inc., a Berkshire Hathaway affiliate, and a franchisee of BHH Affiliates, LLC. Berkshire Hathaway HomeServices and the Berkshire Hathaway HomeServices symbol are registered service marks of HomeServices of America, Inc. Equal Housing Opportunity. Information not verified or guaranteed. If your home is currently listed with a Broker, this is not intended as a solicitation.

RECIPES

Starting this month with Cinco de Mayo in mind is never a bad thing – foods full of fresh flavors with just the right amount of “spicy.” There are cooks who sweat all the traditional details, and those who believe that nearly anything with salsa on it qualifies as a Mexican delicacy. We’ve put together a few salsa recipes sure to be a hit whichever approach you use. These are healthy, store well, and are great to have on hand – which is a good thing since we believe in the Mexican proverb “Mas vale llegar a tiempo que ser invitado” (It is better to drop in at the right time than to be invited). Mix up a batch and put out the welcome mat!

Watermelon Salsa

- 2 cups diced seedless watermelon
- ½ cup diced seedless cucumber
- ½ cup diced tomato
- ¼ cup diced red onion
- ¼ cup diced bell pepper
- 1 jalapeño pepper, seeded and minced
- ¼ cup chopped fresh cilantro
- 1 tablespoon chopped fresh basil
- 2 tablespoons honey
- 2 teaspoons fresh lime juice

Combine all ingredients and let chill for 30 minutes. Serve chilled.



cool and cut corn off cob. Combine with other ingredients and let chill for 30 minutes.

Mango & Avocado Salsa

- 2 mangoes, peeled and chopped
- 2 avocados, peeled and diced
- ¾ cup chopped green onions
- 1 bell pepper, seeded and diced
- 1 jalapeño pepper, seeded and minced
- 2 tablespoons chopped fresh cilantro
- 3 tablespoons fresh lime juice

Combine all ingredients and serve right away at room temperature.



Salsa Fresca

- 4 small tomatoes, chopped
- ½ cup diced red onion
- 2 tablespoons cilantro, minced
- 2 tablespoons fresh lime juice
- ½ jalapeño pepper, seeded and minced
- 1 garlic clove, minced
- ½ teaspoon salt
- ¼ teaspoon black pepper
- ¼ teaspoon chilli powder
- ¼ teaspoon cumin powder
- Pinch cayenne pepper

Combine all ingredients and let chill for 30 minutes.

Charred Corn Salsa

- 2 ears of corn, husks removed
- ½ cup fresh cilantro, chopped
- 1 clove garlic, minced
- 1 jalapeño pepper, seeded and minced
- ½ medium red onion, chopped
- 1 ½ cups seeded and chopped tomato
- 2 tablespoons olive oil
- 2 tablespoons fresh lime juice
- ¼ teaspoon salt
- ¼ teaspoon pepper

Boil corn 6 minutes, then rotate on a grill or gas flame until charred slightly;

Call Today For A 5% Discount For Hershey's Mill!



Complete Landscaping Packages

- ✔ Professional Consultation
- ✔ Scale Drawings & Design
- ✔ Complete Necessary Forms
- ✔ Installation & Warranty

610-692-2649

hmland@comcast.net



Michael C. Neale, P.C.H.
Connie L. Friedrich, P.C.H.



PREMIER DENTISTRY

\$199 Annual Plan

FOR HERSHEY'S MILL: X-RAYS,
TWO CLEANINGS, TWO EXAMS,
TWO ORAL CANCER SCREENINGS,
PLUS 20% OFF ANY DENTAL WORK

FREE

NEW
PATIENT
DENTAL EXAM

Porcelain Crowns in one visit: 20% OFF

Goshen Village Shopping Center,
next to Oriental Pearl and Athena Pizza
1544 Paoli Pike, West Chester, PA 19380



610-696-7066

www.MeyersonDental.com

ACTIVITIES CONTACTS

Alzheimer's/Dementia Support Group.....	Barbara Mulvey
Art Group.....	Dave Linton
Baby Boomers.....	Christy Herschel
Bible Study (Women's).....	Marian Malloy
Bingo.....	Ollie Price
Book Discussion Group.....	Anne McAssey
Bowling	Franne Lytle.....
Bridge Groups:	
WH Duplicate, Mon. 12:30pm.....	Joey Livesey.....
WH Duplicate Bridge, Mon. 7pm.....	Lee Gamma
Golf Club Tuesday Bridgers, Members Only	J.B. Smink
Social Club Party Bridge, Members Only.....	Susan Hackstaff.....
Golf Club Friday Bridge, Members Only.....	John Marks.....
Bus Trips	Marc Fraser.....
Card Games	Penny Adolf
CareSharers.....	(Answering Service)
Chess Club	Miki Sugar.....
Chester County Hospital Auxiliary.....	Constance Campbell.....
Community Center Reservations	(Answering Service)
Computer Club (Apple Macintosh).....	Carol Campanelli
Computer Club (PC).....	Don Trauger.....
Cradle Stitchers.....	Donna Faunce.....
English Darts.....	Sam Arcana
Exercise Groups:	
Aerobic Dance/Exercise.....	Barbara Thomas
Ageless Exercise.....	Gayle Ulrich.....
Tai Chi	Mitch Goldfarb
Yoga.....	Ellie Sybesma
Friends of Sullivan House (FOSH)	Ann Gunn
Garden Club.....	Jim DiCarlo
Golf Club.....	Scott Martin
Havurah (Friends Group)	Tillie Markowitz
Investment Group.....	Fil Rizzo.....
Knitting Circle	Bernice Soffer
Library Board.....	Becky Bell.....
Mah Jongg.....	Erna Graham
Model Railroaders.....	Dave Voorhees
Paoli Hospital Auxiliary.....	Patty Murphy.....
Pinochle Club	Erna Graham
Players	Franne Lytle.....
Poker Club	Mike Brindisi.....
Pool	Carol Campanelli
Quilters.....	Diane King.....
Rummikub	Maryann Tracey.....
Singers.....	Bonalynd Mosteller.....
Social Club.....	Lee Gamma
Sports Group.....	Helen Greco
Stress Management.....	Anita Weeks.....
Sullivan House Reservations.....	(Answering Service)
TV Channel 20.....	Don Trauger.....
Wood Shop.....	Ben Ellis.....

Additional contacts available in the annual *HM Resident Directory*

ADVERTISERS' INDEX

Adult Care of Chester County, Inc.	38	Kevin Free	55
Angel Companions	2	Knots & Weaves	42
A to Z Appliance Repair	37	Liberty Wheels.....	49
Barclay Friends	52	MacLaren Fabrication	26
Bayada Home Health Care	12	Made Easy Inc.....	34
Berkshire Hathaway Home Services	58	Medicare Insurance Services	23
Blinds 4 U.....	34	O'Brien Heating & Air Conditioning	38
Boyles Flooring.....	21	Oliver	42
Brewer Heating & Air Conditioning	15	Oriental Pearl Restaurant	52
Brooklands Audiology, Inc.....	63	Paoli Hospital.....	35
Buckley, Brion, McGuire & Morris LLP	26	Paoli Rug Co.....	31
Calmon Patient Advocate.....	42	Piano Lessons.....	54
Chester County Orthopaedic Associates.....	6	Podiatry, Ronald Melincoff, DPM...2	
Cordes Contracting	48	Podiatry Care Specialists	43
Deck Protect Plus LLC.....	14	Premier Dentistry.....	60
Donnelly Heating & Air Conditioning Inc.....	48	RE/MAX Main Line	46
E.W. Brown, Inc.....	12	Richard J. Egan Painting Co.....	8
Forever Dry.....	56	Riddle Village	30
Franklin Auto Spa	56	Ruggeri Cadillac	4
Frazer Dental Care.....	48	Safe Bath	13
Freedom Village Brandywine.....	27	Seniors Helping Seniors.....	11
Friends of Sullivan House.....	20	ShelfGenie.....	10
General Warren Inne.....	34	Signature HVAC.....	22
Griswold Home Care.....	48	Smile Solutions	39
Haller Enterprises, Inc.	12	Stowers Handyman Service LLC	26
Hershey's Mill Landscape.....	60	Surrey Services for Seniors	43
Hershey's Mill Realty.....	3	Survival Essentials.....	7
John S. Price, Jeweler, Inc.	26	The Bacon Press.....	13
		Toninos Pizza & Pasta Co.....	38
		Wagner Real Estate, Inc.	64
		Wellington	46

HMC-TV thanks our advertisers for their support.

When you contact one of our advertisers, make sure to mention that you saw them in the *Guide and Digest!*

I Listen...

so you can hear better!

**Patricia A. Cohen MA CCC
Licensed Audiologist**



Brooklands Audiology inc.

Meeting Your Hearing & Budget Needs

Over 25 years experience

Serving Hershey's Mill for over 12 years

Complete Hearing Care

State of the Art, Rechargeable, Virtually Invisible

Digital Hearing Aids

Testing Repairs & Service

Amplified Telephone & TV Devices

Hershey's Mill Courtesies

20% off already discounted Hearing Aid Prices

0% Financing Easy Payment Plans 60 Day Trial Period

Free Monthly Hearing Screenings at the Community Center

I represent you to the Major Manufacturers

Please Call 610-408-9250 for appointment

301 Lindenwood Dr. Malvern - Off Rt 30 2 Lights North on Rt 29

Across from Wegmans



Pat Meehan
610-574-2465
Eaton Village

John Clarke
610-547-3861
Eaton Village

Lynne Carter
610-291-1282
Kennett Village

Trust the team that lives here to sell your home.

We sell homes exclusively in Hershey's Mill – so we have a unique understanding of the real estate market here. Using our knowledge and expertise, we will market your home to get you the best price possible.

We've sold hundreds of homes throughout the Mill and we are ready to sell yours. After all, we *live the lifestyle we sell.*

Selling • Buying • Estates
Serving clients exclusively within Hershey's Mill
www.HersheysMillTeam.com



WAGNER INC.
REAL ESTATE
4 Generations Since 1930

610-446-2300