

JUNE 2015

GUIDE — AND — DIGEST



A PUBLICATION OF HMC-TV AT HERSHEY'S MILL

JOIN US | June 17, 2015 | 5pm-7pm

1361 Boot Road, West Chester, PA 19380

You are Cordially Invited to Celebrate
Wellington at Hershey's Mill
Joining the
Benchmark Senior Living Family

Meet Benchmark Founder and CEO Tom Grape
and President and COO, Stephanie Handelson

Enjoy:

Gourmet Food Stations
Complimentary Bar
Outdoor Entertainment
Personal Tours
Valet Parking

RSVP by Friday, June 12th | 484-653-1200



Independent Living | Personal Care | Skilled Nursing | Rehabilitation

Your On-Site Real Estate Team at Hershey's Mill

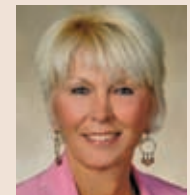
Our experienced team has sold more homes in Hershey's Mill than any other, and has been doing so since 1978. No other agency captures buyer interest like our *on-site* office provides.

In a complex market, it takes more than a basic listing to achieve your goals. So when you need market information, are planning to sell, or looking to purchase, we invite you to stop in at the only full service real estate office at Hershey's Mill. Selling homes here is our *only* business.

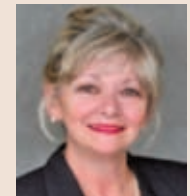
We are located at the Main Gate, and open 7 days a week, so you can meet with an agent when it is convenient for you.

610-436-8922

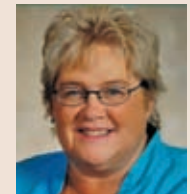
www.hersheysmillrealty.com



Lillian Willis



Monica Connolly



Carol Flynn

1500 Greenhill Road, West Chester, Pennsylvania 19380

Office hours are Monday-Saturday from 10-5 p.m.,
Sunday from Noon-5 p.m., and by appointment.

We recommend an appointment for viewing properties.

Hershey's Mill Community-TV

A fully self-supported nonprofit organization.

20 Hershey's Drive, West Chester, PA 19380

Tel 610-436-5922 • Fax 610-436-6429

Guide and Digest Email: hmctvguide@comcast.net

Business Email: hmctv@comcast.net



HMC-TV Board of Directors

Donald J. Trauger, *President*

Carl Fletcher, *Vice President*

Louise O'Brien

Margie Joyce, *Treasurer*

Helen Heller, *Secretary*

Jack Keeley

All submissions are welcomed. Send to hmctvguide@comcast.net, Attention Editor. Hardcopy submissions are not accepted. Articles should be limited to 500 words (although others may be considered), and photographs should be high-resolution. HMC-TV determines suitability and has sole discretion to publish any submission. Submissions are due by the 22nd (38 - 41 days in advance of each edition) for possible inclusion (those received after will be reviewed for the next); contact the Editor for exceptions. Articles are subject to editing for space, clarity, and grammar. Contents are from various sources; the information and opinions are of the author, and may not reflect those of Hershey's Mill Community-TV, its officers, or directors.

HMC-TV Guide and Digest

Volume XVI Number 6 - June 2015

Editor Louise O'Brien








Featured Writers Gay Barry, Mary Kay Haggerty, Joe Kennedy, Louise O'Brien, Don Trauger

Advertising/Marketing Director Jack Keeley

Marketing Finance Dir. William (Bill) Armstrong

Billing Manager Eve Bailey

Volunteer Coordinator Lee Gamma

	From The Main Gate	7
	Pool News	9
	Getting To Know You	10
	Master Association	16
	HM Bus Trips	18
	HM Series Trips	21
	HM Singers' Spring Concert	23
	HM Wood Shop	25
	Dining Out	26
	Local History	30
	Activities Calendar	34
	Community News	38
	HMC-TV Ch20 Programming	42
	HM Players' Auditions	45
	HM Golf Club	46
	Classifieds	48
	Club News	52
	Technology Tips	56
	Resident Directory Changes	59
	HM Library News	61
	Recipes	62
	Activities Contacts	65
	Advertisers' Index	66

Ruggeri Cadillac Moving Sale Event

During our Moving Sale Event Mark Ruggeri is selling 2014 and 2015 Cadillacs at GM Supplier Prices.

(2015 ATS Coupe & Escalade excluded)



Moving 1 mile south to 1550 Wilmington Pike. New location, same great commitment!



610-455-1700

RuggeriCadillac.com

1265 Wilmington Pike (Rt. 202)
West Chester, PA 19382

RUGGERI
CADILLAC

OF WEST CHESTER

Superior Cadillac Sales & Service in Chester County Since 1933

Cover: A walker takes advantage of another gorgeous afternoon at Hershey's Mill. Find out about a planned addition to the walking trails on page 16 of this edition.

FOOT AND ANKLE CARE IN CHESTER COUNTY IS NOW JUST A STEP AWAY



Orthopaedic Surgeon
Greg Kirwan, D.O.
Foot and Ankle Specialist

- Specializing in operative and nonoperative treatment in all areas of foot and ankle disorders
- Focuses on being YOUR partner in foot and ankle care
- Practices at our West Chester and Kennett Square offices of Chester County Orthopaedic Associates



THE ORTHOPAEDIC CENTER
Chester County Orthopaedic Associates

We specialize in:

- MINIMALLY INVASIVE SURGERY
- TOTAL JOINT REPLACEMENTS
- SHOULDER RECONSTRUCTION
- SPORTS MEDICINE
- FRACTURE CARE
- SPINE CARE
- HAND SURGERY AND REHAB
- PHYSICAL THERAPY
- MRI
- SPINAL SURGERY
- FOOT AND ANKLE CARE

Our Team:

- | | |
|-----------------------|----------------------|
| John Benner, MD | Chet Simmons Jr., MD |
| Jeff Citara, DO | Mark Tantorski, DO |
| Robert Huxster, MD | Adrienne Towsen, MD |
| Todd A. Michener, MD | Richard Ziegler, MD |
| Matthew Schaeffer, MD | Greg Kirwan, DO |

West Chester

915 Old Fern Hill Road
Building A, Suite 1
West Chester, PA 19380
T: (610) 692-6280

Mon - Fri, 8:00-4:30

Kennett Square

400 McFarlan Road
Suite 100
Kennett Square, PA 19348
T: (610) 444-1344

Mon - Fri, 8:30-4:00



visit us at ccortho.com or premierortho.com

FROM THE MAIN GATE

Marc Fraser | Director of Security

As the weather gets warmer, the Security Department begins to find an increasing number of instances of front doors, car windows, trash doors, base-

of activity usually increases within the township during the summer months – and we need your help in assisting our prevention efforts!

Therefore, the Hershey's Mill Security Department would like to urge resi-

Home & Vehicle Security

ment windows, etc. being left open or ajar; especially after dark. While these actions may seem innocent enough, they actually invite potential burglars to take a closer look at choosing your, and/or your neighbor's, property as a possible target.



Although the Security Department works year round to deter any type of criminal or mischievous activity within Hershey's Mill, we are also aware that this type

of activity usually increases within the township during the summer months – and we need your help in assisting our prevention efforts! Therefore, the Hershey's Mill Security Department would like to urge residents to always be sure to secure their homes and vehicles. Thank you in advance for your assistance.



Like getting a little help from your friends.[®]
Call us today! (610) 590-4888

Our loving, caring, compassionate seniors are there to help. We offer all the services you need to stay in your own home, living independently.

www.heart4helpingseniors.com

- Companionship
- Light Housekeeping
- Meal Preparation
- Overnight Stays (24-hour Care)
- Dementia/Alzheimer's Care
- Respite Care
- Personal Grooming and Dressing
- Transportation

©2013 Seniors Helping Seniors. Each office is independently owned and operated. All trademarks are registered trademarks of Corporate Mutual Resources Inc. Not all services are available in all areas.

POOL NEWS

Carol Campanelli | Ulster

**Pool open May 23 through
September 7, 2015**

**Hours are from
10:30 a.m. to 7:30 p.m.**

**Tel. 610-692-8437
www.hersheysmillpool.com**

HELP TAKE CARE OF OUR TABLES

Our beautiful new tables are falling apart! They are sturdy, but dragging them loosens the screws and bends the frames. Therefore we are posting signs asking that you not move the tables; *but if you must, enlist at least two people to pick them up and move them.* We realize that everyone likes to socialize, but we must protect our expensive pool furniture. We will group a few

payable to Hershey's Mill Pool Fund. Come out to socialize, dance, or just watch – and enjoy the music of the first Pool event of the season. Reservations required by *Monday, June 15.*



TOM BARRETT'S MILITARY BENEFIT

Make sure to put this annual **July 4** (rain date July 5) event on your calendar! Tom Barrett leads a great evening of fun that celebrates those that serve in our military, and raises funds for organizations that support them. Keep an eye

out for details to come on this second event of the Pool season.

BOOKS AND GAMES IN THE COVE

Don't forget to take advantage of the Cove's selection of books and games for your time out of the pool. The snack machine is also located there, as is the refrigerator for your snack items that need to be chilled. Just don't leave food in the refrigerator for more than a day, and be aware that party planners may need the space for their supplies.

Come out and enjoy our heated pool!

of the tables to provide more choices to socialize, and hope this will help with the issue. We would prefer not to have to totally prohibit moving tables; and we thank you in advance for your help in addressing this issue.

LARRY MCKENNA TICKETS AVAILABLE

Tickets are on sale at the sign-in desk for the Larry McKenna event on **Wednesday, June 17** (rain date June 18) from **6pm to 9pm**. Tickets are \$20 per person. This includes appetizers, dinner, dessert, drinkware and ice (drinks are B.Y.O.B.). Make checks

**Only
14 days
left!**



**ENTER
FOR YOUR
CHANCE
TO WIN!**

**TICKETS
ON SALE
NOW!**

FUNDRAISER RAFFLE

Gourmet Dinner with Wine Pairing

Winner will enjoy...

- **What:** Dinner for you and nine (9) of your guests
- **Where:** The Historic Sullivan House, Hershey's Mill, West Chester
- **When:** Date of your choice before 12/31/15
- **Hosted by:** FoSH (Friends of Sullivan House)
- **Catered by:** Brandywine Catering
- **Cost of Ticket:** \$30.⁰⁰
- **Drawing:** At the Hershey's Mill Summer Concert Series on June 14, 2015 (Raindate: 6/28/15)

Winner does not need to be present at drawing to win. Checks payable to: Sullivan House Fund
All proceeds go to support the preservation of Historic Sullivan House



For info and to buy tickets...

Shauna Flynn at

or Ann Gunn

Mary Kay Hagerty | Heatherton

Carol Keith wasn't a stranger to Hershey's Mill even before she moved to Jefferson. Her parents, Paul and Ruth Chubb, built their home on Springton Lane where Carol and her children frequently visited. She has memories of going to the HM Clubhouse when there were water fountains in the main lobby. Carol's mother, who recently celebrated her 87th birthday, now lives at Maris Grove, in Glen Mills, along with many of her old HM neighbors.

Born in Montgomery County, Carol grew up mostly in Wilmington, Delaware, in a close-knit community where the fathers worked for DuPont, the mothers stayed home, and the children went to school together and were known as "DuPont children."

Carol has three children: Ryan, 25, a Physical Education teacher at Montgomery School in Chester Springs; Lauren, who will soon begin Graduate Studies at LaSalle University; and Evan, 21, a senior Law student at the University of Delaware.

With an extensive musical background, Carol earned three music degrees; one from Indiana University, one from the University of Southern Mississippi, and another from Rice University. As a doctoral student, she taught graduate courses in Music Theory at Rice. Carol

is an accomplished pianist and organist, occasionally playing for weddings and funerals.

Through her job as a paralegal fifteen years ago, Carol became a Court-Appointed Special Advocate for children in the welfare system. She studied for certification as a life coach and is now an Advanced Coach certified by the International Coaching Federa-



tion. She is a Certified Trainer with the "5 Languages of Appreciation at Work" organization and a Trainer and Licensed Reseller of The Path, Path4Teens, Path4Kids, and Four Elements of Success. She is on the Boards of Directors of the

Photograph of Carol (and Bailey) by Mary Kay Haggerty

Great Valley Toastmasters, NAWBO (National Association of Women Business Owners – Delaware Chapter), Great Dames, and Women In Action Mentoring/Leadership Council. Carol is also an avid student of Bridgeworks, Generational Counseling; bridging the generation(s) gap in the workplace.

Carol explains that, unlike a therapist who delves into your past, a coach is an

easy-going conflict-avoiders. Fire types are illuminating, directed, decisive and often characterized as Type A.

Because the PEP assessment is so easy to understand and use, it works with all age groups and across all cultures; as is illustrated by Carol's recent trip to Kenya with her husband Dave. They led seminars there for youth, men, women and couples. Because Kenya is an agrarian society, the people understood the

Jefferson

Meet Carol Keith

Musician, Mom, Mentor, Mediator and Personal Success Life Coach

accountability partner who works with you "from this day forward." In her job as a Certified Professional Coach, she is passionate about helping individuals and teams break down walls of communication. Carol runs her coaching and mentoring company Puzzle2Purpose, LLC. Her mission is to "Discover, Inspire and Encourage the Uniqueness in You!" She feels that each one of us is unique with a purpose to fulfill – something to give to the world. If you don't make that contribution, the rest of us have missed out.

To help individuals, Carol uses the Path Elements Profile™ (PEP) personality assessment using the designations Earth, Wind, Water and Fire. Each of us has all four characteristics, but most of us have one or two that are stronger than the rest. Earth types are stable, organized and structured. Wind types are inspiring, changing and always moving. Water types are supportive,

Earth, Wind, Water and Fire acronyms and were readily able to apply them to their relationships. While teaching a seminar, Carol describes how one gentleman asked, "Miss Carol, what happens when there is too much of one element?" At that moment a gust of wind blew everything in the tent over onto the ground. "There is your answer," she replied, "Chaos!"

She and Dave loved their experience in Africa, and hope to return. The day they arrived they went on safari. It was so exciting for them to see animals in their natural habitats! They also enjoyed the African food. The Kenyans eat very little meat or protein because it is very expensive. What they miss in protein, they make up for with delicious fresh fruits and vegetables. The mangos were "out of this world." They had a tasty dish called "green grams" made up of

Continued on next page

maize grits covered with a pea-soup-like sauce. They stayed in Kisumu, near Lake Victoria, where cows were wandering freely with no brandings. The Kenyans explained that they put a hex on their cows to protect them. Since they are very superstitious, the Kenyans will not steal another's cow. Carol felt that the Kenyans are the kind of people who would give you the shirt off their back or the food off their table!

Carol and Dave offer an 8-week marriage course, using the PEP program to assess each partner's personality traits and to help spouses communicate effectively with one another. She feels that every marriage is a contribution to the world. Even empty-nesters with grown children, like many of us at Hershey's Mill, have a contribution to make.

Three times a week Carol and Dave work with underprivileged teens in Delaware and Chester County. Many of those they work with have never seen a functioning marriage, so it is beneficial for them to see Carol and Dave together. They use the "brick" analogy with teens: We all have nasty things

that happen, or that we may cause, in our lives ("bricks"). You can choose to use those experiences to build walls, or to use them as stepping-stones to a better life. She encour-



ages us to help others who are going through something we have experienced because we understand some of their trials.

Carol and Dave offer The Path, Path4Teens and Path4Kids workshops in their home and in homes in Delaware and Chester County. Carol runs a weekly Youth Speakers Club in Exton. Two times per year they have a Young

Speakers Luncheon at our Hershey's Mill Golf Club.

Carol loves working with Dave. "I get to spend lots of time with my husband. I would be nothing without him and the business would not run nearly as well."

"My goal," Carol explains, "with youth and young adults, is to teach them to focus on their message – what they want people to know about them and what mark they want to leave on society, instead of the job they think they

should have. Their career is a way to support their message."

She summed it all up by saying "I believe that many people do not realize that we each have a unique contribution to make. Whoever you are is your contribution to the world." What a wonderful philosophy Carol has put to use in many ways! She has made a huge contribution to the world and we are lucky to have her at HM!

Up Close with Carol

How long have you lived at Hershey's Mill?

Two years. We have a blended family; I have three grown children and Dave has two. When the last child went off to college we said "let's downsize."

Where did you live before moving here?

Wilmington, Delaware.

What activities do you enjoy at Hershey's Mill?

Tennis, Pickleball, swimming and golf.

How do you like Hershey's Mill so far?

I enjoy the variety of activities available and the friendly people. We have met many new friends. Her-

shey's Mill is much more than we imagined!

How would you define Hershey's Mill? An active, adult community.

Where do you go to get away? We have a family home on the Chesapeake where we spend most of the summer. We also have a cabin in Georgia which we visit occasionally.

Long-term goals? I would like to get my program into the public school system to work with teens and assist guidance counselors. I would also like to have a retreat center, a place for people to get away and take our workshops as mini-vacations.



Transform Your Kitchen Without Replacing Your Cabinets

Easier Access • Better Organization • More Storage

FREE IN-HOME DESIGN CONSULTATION

Karen J. McKinney, Designer

610.331.0006 | kmckinn001@aol.com | shelfgenie.com



Special Offer for Residents of Hershey's Mill!

50% OFF LABOR

with purchase of 5 or more Glide-Out shelves.

Limit one offer per household. *Valid on Glide-Out purchase with offer. Cannot be combined with other offers.



Deck Protect Plus^{LLC}

Specializing in cleaning and weatherproofing all exterior woods.

The *plus* equals professional handyman services.

610-202-0724

deckprotectplusllc.com

RICHARD. J. EGAN PAINTING CO.

The Superior Craftsmen ... We are Painting Specialists
 Look at Princeton, Glenwood, Oakmont, Ashton, Robynwood, & Ulster Villages, & Sullivan House
 Ask Their Maintenance and Architectural Committees About Us
 INTERIOR & EXTERIOR PAINTING • WALLPAPER HANGING
 DETAIL SPECIALISTS • REPLACEMENT WINDOWS • CUSTOM CARPENTRY
 POWER WASHING • WATERPROOFING DECKS • FULLY INSURED

Brushing and Rolling are Best! ...Spraying upon Request

FREE ESTIMATES Call: 610-353-3570

BREWER HVAC Since 1938
HEATING & AIR CONDITIONING
 We Have Certified 24/7 Technicians
 On Call for Your Home Emergencies

Sales • Service • Installation • GeoThermal

Plumbing Services Available Now

Serving West Chester for 4 generations as your neighborhood contractor.

HM Residents - Mention this ad and receive 10% off new service contracts! Ask about rebates, credits & financing.

610-692-5252
www.brewersheatandair.com



The best care comes in the comfort of home.

BAYADA Home Health Care provides nursing and assistive care 24 hours, 7 days to keep people of all ages safe at home.
 Call **610-255-7307** | www.bayada.com



BAYADA
 Home Health Care
Compassion. Excellence. Reliability.

DECK TOO HOT?

A STATIONARY AWNING OR RETRACTABLE AWNING CAN DOUBLE THE USE OF YOUR DECK. ALL AWNINGS ARE CUSTOM MADE IN OUR SHOP FOR THE GREATEST **SAVINGS — TO YOU!**

INSTALLATIONS - ESTIMATES ARE ALWAYS FREE
 AWNINGS • TENT RENTALS
 BACK LIT AWNINGS • SINCE 1928

call 302-652-6612

E.W. BROWN, Inc.

Paoli Rug Co.
 Since 1956



Rug Cleaning & Repair on Premises
610-644-7250

- Free Pickup & Delivery
- Best Selection of Wall to Wall and Oriental Rugs



www.paolirug.com

Humpty Dumpty Had a Great Fall.



Install Grab Bars.
Call Now 610-696-1693

Ed McFalls | Master Association

The Master Association Board of Directors (BOD) formed an Ad Hoc Walking Trail Committee in 2012. The committee began meeting in earnest in 2013 and mapped out those areas of Hershey's Mill not yet served by a walking

ments to be taken into consideration as part of its Vision Quest initiative. Monies previously being collected for Community Center (CC) rehabilitation were redirected to Vision Quest after the CC improvement program was fully funded and the Master Association adopted a Resale Capital Improvement Fee of \$1,695 per resale. This fee is to

Planned Addition To HM Walking Trail



trail.

This is mostly the eastern loop of Chandler Drive from the Golf Club past Devonshire, and picking up beyond Merrifield, past the East Gate and around to the recreation complex; and finally, after an existing stretch from the Gardens to Franklin, on to the North Gate.

The Committee asked Ed McFalls and Mike Neale to map out possible routes for these areas, and then to develop rough estimates of what such improvements might cost. At the same time, the Master Association BOD was developing a list of possible priorities for improve-

ment funds for such improvements as a soft tennis court surface, bocce ball, the current effort to plan a fully refurbished pool house and meeting space, added walking trails, and other possible future projects not yet identified.

The Walking Trail Committee recognized funding was not available for all areas not currently served by paths; and also recognized that certain stretches might prove impractical, as well as not as important as certain other areas that called out for attention from a safety perspective. One such stretch is the 1500+ linear feet from the East Gate up to about Ashton Village – an area with Brighton Village houses, landscaping and utilities on one side, and a steep embankment with large white pines crowding the Chandler Drive road surface on the

other. The Master Association BOD engaged a civil engineer from E.B. Walsh & Associates to study the alternatives on both sides of Chandler Drive through this area. Under new ordinances – generally mandated from the



The Hershey's Mill Landscape Division and its sub-contractors have provided very competitive pricing for installing a walking trail on the preferred route. This is on the eastern side of Chandler Drive from the East Gate to the top of the hill; where it is proposed to then cross the road and have a short stretch of trail on the Brighton Village side of the road to the golf cart crossing between holes 14 and 15 of the course. The proposed cost is less than half of that estimated by the engineer. The Master Association has voted to accept



state level – there are much more stringent requirements for the development of impervious surfaces (places where water cannot infiltrate naturally into the ground) and management of storm water. The engineer has designed a relatively new approach where a porous pavement design allows for continued infiltration through the macadam. Hershey's Mill Golf Club is currently using a similar system to rebuild the drainage under its sand bunkers on the golf course; at about one hole per year. Using such a system eliminates the need to bury perforated pipe the whole length of a new trail, and to develop a basin to accept the storm water.

the proposal, but now a formal plan must be prepared and submitted to East Goshen Township for review. This is for compliance with the much more stringent storm water management ordinance previously referenced. Trusting that the Township's engineer can be convinced of the wisdom of using this porous pavement concept for building new walking trails, the Master Association is hopeful that this stretch of trail could be installed by the end of the summer.

TRIPS ARE LISTED IN
CHRONOLOGICAL ORDER

Delaware Park

Monday, June 8, 2015
Monday, June 22, 2015
Thursday, July 9, 2015
Monday, July 27, 2015
Cost: \$14 + Lunch
Departs: 10:15am
Contact: B.J. VanSchooneveld

Join us for an exciting day at the races! Watch the horse racing or try your luck at slots and table games. \$30 free slots play is given to everyone on the bus. Lunch is on your own.

New York City

Wednesday, June 10, 2015
Cost: \$29
Departs: 8:00am
Contact: Bobbi Rubenstein

It's spring, and "NYC on your own" is back by popular demand! Our bus driver drops us off in the Theater District and picks us up at the same place at 7pm for the ride home. You spend your day doing whatever *you* choose to do in this wonderful city! Meals are on your own.

The HM Bus Committee is always looking for more volunteers to share ideas and plan trips! If interested, call Marc Fraser at

All bus riders must be age 18 or older (unless specifically noted in description).

Trip payment checks should be made payable to "Hershey's Mill HOA".

Bus leaves promptly at the scheduled time. Please plan to arrive 10 minutes early.

Philadelphia Phillies and Fireworks

Wednesday, July 1, 2015
Cost: \$49
Departs: 4:45pm
Contact: Priscilla Burt

Join us for an evening of baseball and fireworks at Citizen's Bank Park. We will watch our Philadelphia Phillies take on the Milwaukee Brewers in a 7:05pm game; and enjoy the XFINITY 4th of July fireworks show after the game! Tickets have been pre-purchased, and seating this season has been upgraded to Section 211. Food is on your own at one of the many ballpark concessions.

Children age 8 and older are welcome.

Guide Dog School – Morristown, NJ

Saturday, July 18, 2015
Cost: \$67
Departs: 7:30am
Contact: Joan Wood

Join us for a visit to the world's oldest, and internationally renowned, Guide Dog School located in historic Morristown, New Jersey. We'll tour the facility and attend a presentation describing the outstanding work of this non-profit organization. Lunch will follow at the Black Horse Tavern; established during the 18th century. Cost includes lunch, taxes, gratuities, and a donation to the Seeing Eye School.

Cape May Seaside Adventure

Thursday, August 20, 2015
Cost: \$92 + Dinner (Lunch is included in the price)
Departs: 7:30am
Contact: Priscilla Burt

The adventure will begin aboard the *Cape May Whale Watcher* for a sight-seeing cruise around the island of Cape May.

View the majestic Victorian architecture and enjoy tales of local legends. There is always

the possibility of a whale or dolphin sighting. Lunch will be at the Carriage House Cafe on the beautiful grounds of



the Emlen Physick Estate; with time to browse the Estate's museum gift shop and Gallery exhibit. A Maritime Heritage Lecture at the Estate will explore Cape May's maritime history and heritage. Next, a Step-on-Guide will conduct a tour to Cape May Point to visit the newly restored Lighthouse, view the migratory bird population and sunken ship *Atlantis*, and search for Cape May Diamonds. The last stop will be at the Lobster House Dock for the Fisherman's Wharf Tour. Lunch is included in the cost. Dinner will be on your own at the Lobster Dock.





Pine & Pine Law Offices

Nancy W. Pine Norman J. Pine
Attorneys at Law

Estate Planning, Estate & Trust Administration, Elder Law
104 S. Church Street, West Chester, Pennsylvania 19382
Telephone: 610.344.7100 Facsimile: 610.344.7500
www.pineandpine.net

Professional,
Experienced
& Practical
Legal Representation
Tailored for You.



VA Accredited Attorney



HERSHEY'S MILL SERIES TRIPS

2015-2016 Philadelphia Orchestra

Friday Evening Series

Cost: \$84 (All 6 Dates Bus Only) or
\$14 (Single Date Bus Only) +
Performance Admission

Departs: 6:00pm

Contact: Ann Seraphin

If you haven't been to the Philadelphia Orchestra, or haven't been

lately, join us to experience the wonderful and thrilling music which you've been missing! Our Friday Evening Series dates and performances are:

October 15, 2015

Beethoven's Eighth

November 13, 2015

One River, One Land, One People

November 27, 2015

Rachmaninoff's Paganini Rhapsody

February 12, 2016

Bronfman Plays Beethoven

March 11, 2016

Symphony of a Thousand

April 29, 2016

Yo-Yo Ma

Call now to reserve your place. Please note that admission to the performances are in addition to bus transportation.



SURREY

Services for Seniors

**The Leader in
Senior Care**



Home Health Care

In-Home Services

Health & Wellness Programs

Housekeeping

Transportation

*A non profit organization
serving the community
for 33 years.*

610-647-9840 • www.surreyservices.org

Healthy Feet for an Active Life

Conservative, non-surgical options for most foot conditions



DR. RONALD H. MELINCOFF

Primary Podiatric Medicine

Fellow American Professional Wound Care Association
Specializing in the Care of Diabetic and Medically-At-Risk Feet

Day and evening appointments
610-692-0578

Goshen Executive Center, Suite 200-B
1450 East Boot Road
(Boot Road and Paoli Pike – Opposite CVS)



ANGEL COMPANIONS®



Affordable and compassionate care by a locally owned and managed company - we are licensed and our employees are bonded & insured.

Please call for a free assessment:

610-644-8780

Home Care for Seniors

- Personal care
- Hospice assistance
- Meal preparation
- Medication reminders
- Laundry
- Light housekeeping
- Companionship
- Transportation

**Ask about our
Live-in Program**

www.angelcompanions.net

HM SINGERS' SPRING CONCERT

We are so fortunate to live in a wonderful world in many ways. Come celebrate spring and this wonderful world with the Hershey's Mill Singers at their spring concert.

"The Millers" group, and the women's quintet "The Hershey's Missus," will sing special selections for you; along with other surprises.

June 7, 4 pm

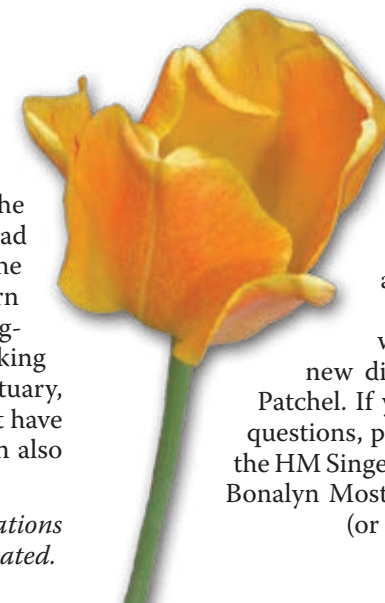
*Hershey's Mill Singers'
Spring Concert*

**Saints Peter and Paul
Roman Catholic Church**

**1325 E. Boot Road
West Chester**

For those needing help finding the location, the church is on Boot Road just outside Hershey's Mill. Exit the Mill gate next to the Giant and turn right onto Boot. Just after Wellington, turn right into the church parking lot. The church has a huge sanctuary, so no need to worry that we won't have enough seats. The parking lot can also accommodate all cars.

The concert is free but donations are appreciated.



Join us for the music and fun, and to help us welcome our new director, Steve Patchel. If you have any questions, please contact the HM Singers' president, Bonalyn Mosteller, at (or by email at).

We Do The Work, So You Don't Have To.

Downsizing to move can be overwhelming.

Call Survival Essentials.

survival essentials
OUR TIME, YOUR FREEDOM

610-804-8646

www.SurvivalEssentials.com
Jean Back/Chandler Drive/Hershey's Mill



Signature

heating | air conditioning | geothermal

**Comfort, Safety, Savings
Dependable Service**

24/7

610-738-8310

www.Signaturehvac.com

**\$49 Precision
Tune Up**

**Free Diagnostic
With Any
Repair!**

**\$1000 OFF a Qualifying System
Installation**

*PLUS 0% Financing
For 36 Months*

**Call Today And
Take Advantage
Of Our**

Special Hershey's Mill Pricing



HERSHEY'S MILL WOOD SHOP

Benny B. Ellis Sr. | President

We are pleased to recognize Arnold Auger as an exceptional resident of Hershey's Mill and an emeritus member of the Wood Shop. He recently celebrated his 90th birthday, and his friends at the Wood Shop presented

the vacuum system to keep the shop, and more importantly the lungs of shop members, free of dust contamination. Arnold has trained other shop members to perform these tasks; and because of his efforts, the shop has not needed to pay for any equipment repair and maintenance for as long as anyone can remember.

Arnold Auger

him with a leather apron that recognizes him as a Master Woodworker. That designation, however, is not his most important claim to fame.

The HM Community has been improved in many ways due to Arnold's service as past president of Ashton Village, and as vice president of the Wood Shop. But his greatest characteristics are his love and caring for his wife and family, his sharing of his accumulated lifelong knowledge to his friends, and his willingness to teach his woodworking talents and skills to Wood Shop members.

Arnold has been, and continues to be, a builder of high quality furniture. He has guided the selection and purchase of shop equipment that has transformed the Wood Shop into a premiere amenity of Hershey's Mill; and one that is on par with commercial facilities that specialize in custom furniture making. He has expertise in the repair and maintenance of the sophisticated shop machinery; and has designed, installed and automated



He is a major supporter of the Wood Shop's financial needs, helps formulate and implement the day to day decisions of the Executive Board, and provides great leadership in the management of the Wood Shop.

We are fortunate to know him, and call him a friend. Hershey's Mill is very fortunate to have him as a resident.

Gay Barry | Quaker

Yes, The Classic Diner now has two locations. The one in Malvern has been open for 20 years, sometimes with people standing in line for breakfast or brunch on the weekends. With all of that success, it seems reasonable to think that another one could be as popular, and that might just be the case at the new The Classic Diner located in West Chester.

Opened in December, it is owned by the Farrell brothers and their wives. Tom and Linda Farrell are also the proprietors of the esteemed Savona Bistro

The Classic Diner menu offers traditional and non-traditional fare including: Eggs Benedict, bacon, an array of egg dishes, brioche French toast, but-



16 E. Gay St., West Chester

The Classic Diner



in Unionville. So one would expect delicious fare at this establishment. Actually, the server suggested that it should be known as “The Classy Diner” because the food goes beyond a traditional diner. However, they have taken a bow to diners with their small counter accommodation.

termilk pancakes, as well as Italian coffee. Hot chocolate with whipped cream is offered for the young; or a nostalgic treat for those of us who are a little older!

All selections are house made; including chips and fries. Popular with the lunch crowd are their burgers; as well as a sandwich of prosciutto, mozzarella, roasted peppers, olive oil, Roma tomato, and basil pesto (now that’s a hearty sandwich).

Choosing from the breakfast menu can be a pleasant challenge. They are known for their “locally famous” bacon, and the Eggs Benedict is a popular choice as well. In addition to the “classic” Benedict, selections include filet mignon, jumbo lump crab, avocado and tomato,

sautéed spinach, smoked salmon, or asparagus.

Three-egg omelettes have a multitude of additions; including 13 vegetables, seven meats, and nine cheeses. The cost varies according to the selection(s). Served with home fries and toast, the starting fare is \$7.

For another favorite choice, breakfast sandwiches are available with roasted peppers, eggs, provolone, and basil pesto on a crusty Italian bread. There are also “eggs your way” sandwiches as well.



Since having breakfast “out” is rather a tradition for many folks on the weekend, The Classic Diner is a busy place. It’s a great way to start your day; and certainly my favorite meal to be cooked by others. A bonus for those who love breakfast at other times, they serve breakfast selections all day.

The lunch menu offers a variety of options as well. Classic sandwiches are imaginative. One such example is the quesadillas with grilled chicken, pep-

per jack cheese, salsa Mexicana, green onions, black beans, sour cream, and Spanish rice. You can also sink your teeth into a smoked turkey (or corned beef) special with Swiss cheese, Napa slaw, and Russian dressing on marble rye. For those of us who are Italian foodies, a grilled Portabella with zucchini tomato, red onion, roasted pepper, mozzarella cheese, and basil pesto on Tuscan bread sounds just about right. If staying with something traditional, a bacon, lettuce, and tomato sandwich is yours for the asking.

Burgers and chicken with loads of additions (extra charge) can satisfy nearly any pallet. Salads and soups, as well as desserts, round out the choices and make it a near certainty that The Classic Diner can satisfy almost any appetite.

On our visit we were helped by a cheerful and accommodating server. The

Classic Diner in West Chester seats 65; with tables located upstairs as well as an outdoor patio where patrons may sit rain or shine. One drawback we noticed is that the tables are quite small and chumminess with your neighbors is often the standard. So save your wooing for another time; and if it is *entre nous*, remember, no last names please!

The Classic Diner is open every day from 7am to 3pm. Dress is casual. Parking is available next door or on the street. If you’re in a hurry, take out may be the answer. Whether a fan of the original or a first timer, it’s worth a try.

Photos courtesy of The Classic Diner

Serving Chester County



SPRING SAVINGS

- \$69 Diagnostic Evaluations (New Customers)
- \$89 A/C & Heat Pump Cleanings (New Customers)
- EAP, PECO Rebates and Manufacturer Rebates
- Extended Parts & Labor Warranties
- We service all brands and models
- FREE Installation Estimates

610.399.1998

www.DonnelyHVAC.com

Donnellyhvac@verizon.net

BUCKLEY, BRION, MCGUIRE & MORRIS LLP
IS PROUD TO HAVE SERVED
HERSHEY'S MILL SINCE 1983



**BUCKLEY BRION
MCGUIRE & MORRIS LLP**

- ~ Wills & Trusts ~
- ~ Estate Administration & Real Estate ~
- ~ Personal Injury, Medical Malpractice ~
- ~ Accident Cases ~
- ~ Miscellaneous Legal Matters ~

FOR INFORMATION CALL ANTHONY MORRIS
PHONE: (610)436-4400, EXT. 103 OR
EMAIL: AMORRIS@BUCKLEYLLP.COM
118 W. MARKET STREET, SUITE 300
WEST CHESTER, PA 19382-2928



Move to Freedom Village, and you'll move on to "Five-star" healthcare.

Freedom Village at Brandywine is the best of both worlds – the convenience and amenities of communities such as Hershey's Mill but now with FIVE-STAR healthcare. We deliver exceptional Independent Living, Assisted Senior Living, Alzheimer's and Dementia Care and Skilled Nursing Care options for you or your loved ones.

We're located in historic Chester County, adjacent to the Brandywine Hospital and its comprehensive medical services. Plus, you'll be minutes away from shopping, theaters, fine dining options and the Applecross Country Club golf course.

Within our community, you'll find woodworking and billiards, aerobics, gardening, indoor swimming and educational events.

We're proud to provide FIVE-STAR healthcare with a high quality of life and the highest levels of care and caring.

Call 1-866-287-3072 to arrange a tour, meet our residents, have lunch or dinner and see our brand new renovations.



Freedom Village Brandywine
A Life Care Community
15 Freedom Boulevard
West Brandywine, Pennsylvania 19320

brookdale.com



Brookdale® and ALL THE PLACES LIFE CAN GO™ are trademarks of Brookdale Senior Living Inc., Nashville, TN, USA. © Reg. U.S. Patent and TM Office. 14-71181-2359-1115-L8

John S. Rice
JEWELER INC.

- Custom Jewelry Design
- Re-mounting
- Repairs performed on-premises
- Appraisals

10% off all new purchases to residents of Hershey's Mill

FRAZER SHOPPING CENTER
BUSINESS RT. 30 • FRAZER, PA 19355
610-647-6168

 **MacLaren**
Kitchen and Bath



Countertop Replacements In One Day!

Visit our Showroom For:
Granite, Corian, and Quartz
Cabinet Design and Sales
Tile Backsplashes
Sinks and Faucets

We're Just Around the Corner
Monday- Friday 8am- 4:30pm
Saturday 10am-2pm

610-436-5436
www.maclarenfab.com
1135 Phoenixville Pike West Chester, PA

Joe Kennedy | Princeton

He was an artist who painted in spite of his paralyzed hands. In the curled fingers of his right hand, which was bent back at the wrist, he braced the brush. Then, taking his left thumb and forefinger, the only digits that had any degree of flexibility, he guided the brush over the canvas. As a result of his fierce determination, William B. T. Trego, a turn-of-the-century artist from North Wales, was able to create some of the most dramatic military history paintings of his time.

in the area. Young Trego's mother died early in his life and he was reared by a stepmother, Delia Dexter Trego. The family settled in North Wales where the father had a studio that William shared, first as a student and later as an artist.

During this period, Trego developed an interest in military art in general and the history of the Civil War in particular. History painting was popular in the United States during much of the 19th century, but photography supplanted it toward the end of the century.

In 1879, when Trego was just 20, his career was launched when he exhibited *The Charge of Custer at Winchester*; a Civil War painting. With the proceeds from its sale, he was able to attend the Pennsylvania Academy of Fine Arts where he studied under Thomas Eak-

Despite the limited market for them he continued to produce history paintings. He remained close to his parents and had few friends. His disability made it difficult for him to move and he was short-tempered with anyone who tried to help him.

William B. T. Trego

Accounts of the origins of Trego's paralysis vary. Trego's parents said he fell off a sofa at age 2 and injured his spine. Trego himself believed that a doctor accidentally gave him an overdose of calomel when he was teething. But most art historians think that it probably was polio that left the boy with crippled feet and almost totally paralyzed hands. Yet whatever the cause of the handicap, it did not deny him his artistry.

According to files in the library of the Pennsylvania Academy of the Fine Arts in Philadelphia, William Brooke Thomas Trego was born in Yardley in 1859. His father, Jonathan, an associate of the academy, made a living by painting the portraits of well-to-do people

Trego's timing was very bad. Military history art was no longer popular, and the realistic narrative style he used was losing ground to the new impressionistic style that was developing in the art world of the period. So his work was running counter to popular trends.

"The Color Guard" (1888)



"The March To Valley Forge" (1883)

ins. While at the academy he produced another large painting that depicted George Washington, *The March to Valley Forge, December 16, 1777*. The painting is now a part of the Valley Forge Historical Society collection.

Between 1886 and 1889, Trego studied in Europe, most notably Paris, where he did some sketching for future paintings of the Franco-Prussian War. He later turned these sketches into large history paintings. Upon his return from Europe, he again lived with his father and stepmother in North Wales. And while he continued to paint, he experienced trouble making ends meet.

Trego was far from being financially successful as an artist. The paintings he produced were not in demand, so he had to accept much less than he thought the paintings were worth.

His studio was full of props and books related to the Civil War and other aspects of military history. He did painstaking research into the battles he depicted on canvas. Details such as terrain, uniforms and weapons were important to him. In doing the 1899 painting of *The Rescue of the Colors*, an incident in the Civil War battle of Fair Oaks, he wrote to men who had fought in the battle and asked detailed questions:

"How far from the fence was the woods?" "Where was the captain and lieutenant of Company C?" "Did the enemy come near enough for men in the front ranks to see their hands?"

Continued on page 33



Get a Taste of Healthy Living at Riddle Village.

When you talk with senior adults about the quality of life at a retirement community, dining is always near the top of the list. Why? Well-prepared, healthy and tastefully presented menu options are part of the joy of living – and part of every day life at Riddle Village.

With a variety of on-site venues, including the newly renovated Garden Terrace, wholesome and delicious menu choices make dining at Riddle Village a healthy, relaxing, and highly enjoyable experience.

See for yourself. **For more information, and a personal tour, please call today: (610) 891-3700**



1048 West Baltimore Pike • Media, PA 19063 • (610) 891-3700 • www.riddlevillage.org

LeadingAge PA



MAG/HMGD/11-14

LOCAL HISTORY (continued)

The painting, which he worked on for more than a year, was sold for \$400 to the Bucks County Historical Society. The work represented Trego at the high point of his career. After this his life began to unravel.

In 1901, Trego's father died, leaving a great void in his life. Yet he continued to work. But in 1907, his stepmother also died, making it difficult for Trego to take care of himself. His last canvas, *The Chariot Race* done in 1908, was a large work measuring 48 by 84½ inches, and is considered one of his better non-Civil War paintings.

In June 1909, at age 50, alone and in debt with no prospect of improving his

William Trego in his studio (1893)



financial situation, he committed suicide. Yet his art, more than 100 years later, is still remembered and still in demand by a small group of collectors.

The Bacon Press

BREAKFAST & LUNCH



Full menu available at
www.baconpresscafe.com

Bacon is our passion!
We use only the finest and freshest ingredients to create unique breakfast and lunch dishes. 10-14 varieties of home-made bacon are always on rotation for your indulgence. It is our pleasure to make every guest feel welcomed and never leave hungry.

Monday – Friday
7 AM – 3 PM

Saturday – Sunday
7 AM – 2:30 PM

235 Lancaster Ave
Lincoln Shopping Center

Malvern, PA 19355
Phone 484-328-3118




TODAY'S BACON

- Applewood
- Hickory
- Apple Cider
- Beef
- Mango Habanero
- Jerk
- Peppercorn Maple
- Wild Boar
- Black Forest
- Cinnamon Chipotle
- Mesquite
- Asian Sesame



Always FREE COFFEE
for Hershey's Mill residents
(with purchase of entrée)
Bring in this coupon to get your VIP Card with HM coffee stamp.

Monday	Tuesday	Wednesday	Thursday	Friday	Saturday	Sunday
1 8:30am Aerobic Dancing/Exercise 9:45am Aquacise 10:00am Ageless Exercise 12:00pm (SH) Circle Of Friends 12:30pm Mah Jongg 12:30pm WH Duplicate Bridge 3:00pm Bridge 7:00pm Singers Rehearsal 7:00pm WH Duplicate Bridge	2 9:45am Aquacise 10:30am Hearing Screening 1:00pm Pinochle 1:00pm Mah Jongg 1:30pm Mah Jongg 3:00pm (SH) Railroad Club	3 7:30am Men's Bible Study 8:30am Aerobic Dancing/Exercise 9:30am Intermediate Bridge Lesson 9:45am Aquacise 10:00am Ageless Exercise 12:00pm Art Group 12:30pm Social Club Bridge 12:30pm Billiards 7:00pm Casual Singing Group 7:30pm Mah Jongg	4 9:45am Aquacise 10:00am Alzheimer/Dementia Support Group 10:00am Yoga 12:30pm Billiards 1:00pm (SH) Chess Club 1:00pm Knitting Circle 2:00pm Card Games 6:30pm Poker 7:00pm Brighton Open	5 8:30am Aerobic Dancing/Exercise 9:45am Aquacise 10:00am Quilters 10:00am Ageless Exercise 12:30pm Billiards 1:00pm Pickleball Mah Jongg 4:15pm Line Dancing	6 9:45am Aquacise	7
8 8:30am Aerobic Dancing/Exercise 9:45am Aquacise 10:00am Ageless Exercise 12:00pm (SH) Circle Of Friends 12:30pm Mah Jongg 12:30pm WH Duplicate Bridge 3:00pm Bridge 7:00pm HM Singers Party 7:00pm WH Duplicate Bridge	9 9:45am Aquacise 1:00pm Pinochle 1:00pm Mah Jongg 1:30pm Mah Jongg 3:00pm (SH) Railroad Club 7:00pm (SH) Great Books Club 7:00pm PC Computer Club	10 7:30am Men's Bible Study 8:30am Aerobic Dancing/Exercise 9:45am Aquacise 10:00am Ageless Exercise 12:00pm Art Group 12:30pm Billiards 7:30pm Mah Jongg	11 9:45am Aquacise 10:00am Yoga 11:30am Mermaid Book Club 12:30pm Billiards 1:00pm (SH) Chess Club 1:00pm Knitting Circle 2:00pm (SH) Books Discussion 2:00pm Card Games 6:00pm Princeton Party 6:30pm Poker	12 8:30am Aerobic Dancing/Exercise 9:45am Aquacise 10:00am Quilters 10:00am Ageless Exercise 12:30pm Billiards 1:00pm Pickleball Mah Jongg 2:00pm Rummikub 4:15pm Line Dancing	13 9:45am Aquacise	14
15 8:30am Aerobic Dancing/Exercise 9:45am Aquacise 10:00am Ageless Exercise 12:00pm (SH) Circle Of Friends 12:30pm Mah Jongg 12:30pm WH Duplicate Bridge 3:00pm Bridge 7:00pm WH Duplicate Bridge	16 9:45am Aquacise 1:00pm Pinochle 1:00pm Mah Jongg 1:30pm Mah Jongg 3:00pm (SH) Railroad Club 7:00pm Investment Club	17 7:30am Men's Bible Study 8:30am Aerobic Dancing/Exercise 9:30am Intermediate Bridge Lesson 9:45am Aquacise 10:00am Ageless Exercise 12:00pm Art Group 12:00pm Social Club Bridge 12:30pm Billiards 7:30pm Mah Jongg	18 9:45am Aquacise 10:00am Yoga 12:30pm Billiards 1:00pm (SH) Chess Club 1:00pm Knitting Circle 2:00pm Card Games 6:30pm Poker	19 8:30am Aerobic Dancing/Exercise 9:45am Aquacise 10:00am Quilters 12:30pm Billiards 1:00pm Pickleball Mah Jongg 4:15pm Line Dancing	20 9:45am Aquacise	21 First Day of Summer
22 8:30am Aerobic Dancing/Exercise 9:45am Aquacise 10:00am Ageless Exercise 12:00pm (SH) Circle Of Friends 12:30pm Mah Jongg 12:30pm WH Duplicate Bridge 3:00pm Bridge 7:00pm WH Duplicate Bridge	23 9:45am Aquacise 1:00pm Pinochle 1:00pm Mah Jongg 1:30pm Mah Jongg 3:00pm (SH) Railroad Club 7:00pm (SH) Great Books Club 7:00pm HM Players Auditions	24 7:30am Men's Bible Study 8:30am Aerobic Dancing/Exercise 9:45am Aquacise 10:00am Ageless Exercise 12:00pm Art Group 12:30pm Billiards 7:30pm Mah Jongg	25 9:45am Aquacise 10:00am Yoga 12:30pm Billiards 1:00pm (SH) Chess Club 1:00pm Knitting Circle 2:00pm Card Games 6:30pm Poker	26 8:30am Aerobic Dancing/Exercise 9:45am Aquacise 10:00am Quilters 12:30pm Billiards 1:00pm Pickleball Mah Jongg 2:00pm Rummikub 4:15pm Line Dancing 7:00pm Bingo	27 9:45am Aquacise 10:00am Mac Group	28
29 8:30am Aerobic Dancing/Exercise 9:45am Aquacise 10:00am Ageless Exercise 12:00pm (SH) Circle Of Friends 12:30pm Mah Jongg 12:30pm WH Duplicate Bridge 3:00pm Bridge 7:00pm WH Duplicate Bridge	30 9:45am Aquacise 1:00pm Pinochle 1:00pm Mah Jongg 1:30pm Mah Jongg 3:00pm (SH) Railroad Club 7:00pm HM Players Auditions	SH is Sullivan House. Dates and times subject to change. Contact program leader for details.		 <h1 style="text-align: center;">June 2015 Activities Calendar</h1>		

MADE EASY inc. **Deck Restoration**
 Established 1986, Fully Insured

DECKS

- Powerwashing
- Weatherproofing
- Staining
- Repairing
- Tear-down
- Rebuilding
- Resurfacing

CONCRETE

- Power-wash Concrete Patios
- Garage Floors Epoxy Coatings

PA Contractor's Register #068234

ASK for the Special Hershey's Mill Discount

610-827-7420
 INSURED & BONDED
 FREE ESTIMATES

Hershey's Mill #1 Deck Restoration Company

- Over 2 Million Sq. Ft. Restored
- Over 600 Decks Restored in Hershey's Mill
- **PLUS** Community Pool Deck - tear down, rebuild & coat

Walking trail benches - rails - bridges and more

**IF YOU WANT THE BEST - FORGET THE REST
 CALL MADE EASY, INC TODAY**

GENERAL WARREN
Historic Hospitality 1745

15% food discount at lunch
 for all Hershey's Mill residents
 11:30 am - 2:30 pm Mon-Fri

- American Cuisine
- Small Plates/Lite Fare
- Private Party Rooms
- Outdoor Dining
- Live Music in the Tavern
- Guest Suites

9 Old Lancaster Rd Malvern, Pa
www.generalwarren.com
 610-296-3637

ZAGAT rated "High Excellence"

Featuring Hunter Douglas & Other Manufacturers

BLINDS 4 U
 610-246-3100

Shop At Home Service for Hershey's Mill.
 We Will Beat Any Printed Installed Price!

SALE

- Silhouettes
- Luminettes
- Pleated & Honeycomb Shades
- Duettes
- Country Wood Blinds
- Plantation Shutters
- Mini Blinds
- Verticals
- Roman Shades

Free Quotes ❖ Measuring ❖ Installation
 Bottom line pricing all the time!

Quality care you deserve, close to home.

When it comes to your family's health, you can trust the care of Paoli Hospital. We've grown from a seven-room facility to the County's only trauma center, investing in new facilities and technology and expanding our services and staff to meet your needs.

Our dedication to patient safety and excellence has been recognized by some of the nation's leading health care standards-setting organizations. We're proud to be the only hospital in the County with accreditations in *all* of the following:

- Breast Cancer Care • Chest Pain • COPD • Hip and Knee Replacement
 Sleep Disorders • Stroke • Trauma

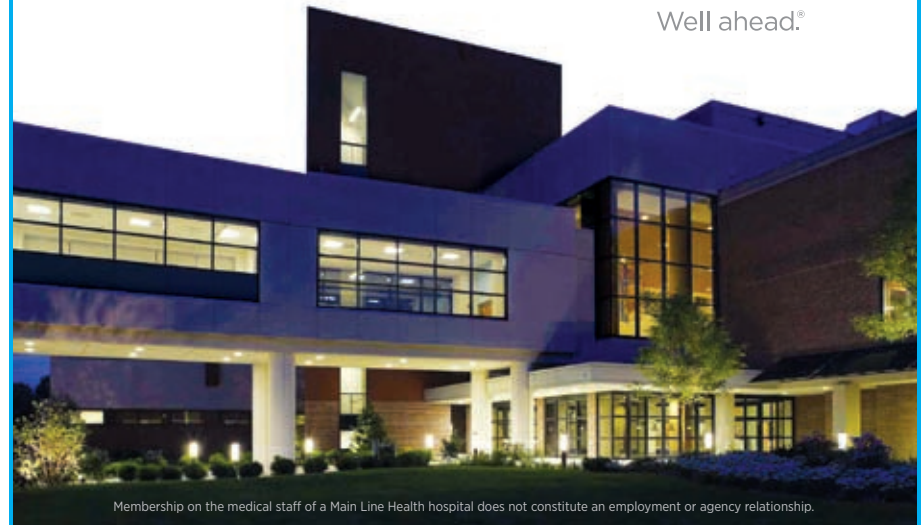
With many of our physicians and services available at the Main Line Health Centers in Collegeville and at the Exton Square Mall, quality care has never been more convenient.

1.866.CALL.MLH
mainlinehealth.org/paoli



Paoli Hospital
 Main Line Health®

Well ahead.®



Membership on the medical staff of a Main Line Health hospital does not constitute an employment or agency relationship.

COLOR BARS TROUBLE ON CHANNEL 20

Don Trauger | HMC-TV Channel 20

You may have noticed vertical color bars when tuning in to HMC-TV Channel 20 on our local cable system. Our movies and original programming have not been affected; and they will run at their scheduled times. The problem has been caused by a failure in the TV Bulletin Board system. Hopefully, by the time you read this the problem will have been corrected.

PAOLI HOSPITAL AUXILIARY DONATION DAY

Helen Ziegler | Franklin

The Hershey's Mill branch of the Paoli Hospital Auxiliary will host Donation



Day on **Tuesday, June 2** from **9am to noon** at the HM Community Center. We accept clothes, jewelry, household items, and small furniture; we do not accept items for men or children. Thanks in advance for supporting this important cause.

LIFELONG LEARNING SERIES AT WELLINGTON

Wellington would like to invite all residents from Hershey's Mill to attend a Osher Lifelong Learning Institute series to be held in our Auditorium. Classes will be held for 5 weeks, on **Friday, June 5, 12, 19, 26 and July 3.** Ross Kershey from Widener University offers the program "Ike to Obama."

Cost is \$40 per person. Call Jean Dixon of Wellington at 484-653-1200 to sign up or for more information.

DAYLESFORD ABBEY GOLF OUTING

On **June 22**, the 12th Annual Daylesford Abbey Golf Outing will be held at the Hershey's Mill Golf Club. Cost per person is \$225 and includes lunch, cart, golf, cocktails, dinner, and prizes. Cost for cocktails and dinner only is \$60. Call Jeanne Byrne at 610-647-2530 extension 118 to register. All are welcome.

CHESTER COUNTY CHALLENGE FOR CANCER

Lydia Hayes | Springton

This charity bike ride, benefiting The Chester County Hospital Cancer Center and the Neighborhood Visiting Hospice, is in its 17th year and to date has raised over \$450,000 for these organizations. This year's event is scheduled for **Sunday, June 28.** The rides, which emanate

from the Fern Hill Medical Building on Old Fern Hill Road, have distances of 5, 10, 25, 50 and 63 miles.

Our westerly routes take riders through scenic, hilly Chester County. Our family



rides of 5 and 10 miles are relatively flat, except for the hills in Hershey's Mill. In past years, the family riders have enjoyed themselves on the 10 mile route which takes them through Hershey's Mill.

The ride is well supported with volunteers from Hershey's Mill Auxiliary of Chester County Hospital who help at intersections with traffic and cyclists. We also have a police escort from the Westtown-East Goshen Police Department and a van from Bike Line that follows the riders along the route. The riders enter and exit Hershey's Mill from the West Entrance near the Giant parking lot.

The Chester County Challenge for Cancer Committee thanks all of you for supporting our event.

HM SPORTS GROUP

Reade Nimick | Lincoln

Volunteers, where are you? Tennis players, Pickleball players, Bocce rollers – we need you. Our Hershey's Mill Sports Group runs on energy, fun, competition, and by the contributions of time by a number of participants – we need them (*and you!*) to make things happen. Right now we need leaders, coordinators, and willing helpers to "make happen" our all-sport Holiday Round Robins, a couple of

Socials, and the social, beverage, and snack parts of the Interclub home con-

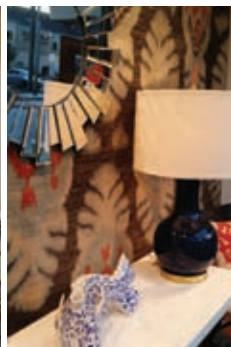


tests. Please give serious consideration as to how you can help out, then call Helen Greco at _____ (or email her at _____) to enlist. You will make her day, and provide valuable assistance to the HM sports community!

KNOTS & WEAVES

DECORATIVE RUGS • HOME DECOR

FOLLOW OUR STEPS
to finding eclectic home decor, including:



Vintage · Antique
Handcrafted · Art
Fashion · Jewelry
Estate Finds and
Monogrammed Gifts!

AWARD WINNING
selection of handwoven
wool area rugs to meet
every budget.
+ in home design services



RUG CLEANING!
Customers are shocked at how
great they look... like NEW!



WE WILL BUY YOUR... Rugs, Art, Ceramics, Furniture,
Antiques, Glassware, Figurines, Jewelry, Coins and more...

FREE PICKUP + DELIVERY (within a 10 mile radius
(Prices are based on size)

610.644.9192

218 East King Street | Malvern, PA

www.knotsandweaves.com



Looking
for
Daytime
Senior
Care?



We offer personalized care for dependent adults in
our engaging, social environment.
Treat your loved one to services from our expert
nurses, therapists, and personal care assistants.

Adult Care
of Chester County, Inc.

Care from the Heart that's State of the Art

Kim, our Family Services Director,
is available for consultations anytime.

610-363-8044

201 Sharp Lane, Exton PA • www.acofcc.org
Just 15 minutes from Hershey's Mill!

O'Brien
Heating & Air Conditioning
O'Comfort

60 YEARS OF "O'MAZING" SERVICE

- Fast Emergency Service -
- Service Agreements -
- Custom Installation -
- Water Heater Replacement -
- Duct Cleaning & Attic Insulation -



Call 610.696.7143
www.ocomfort.com



MICHELLE AITKEN, DDS

SMILE SOLUTIONS
Exceptional Dentistry, Affordable Prices

HERSHEY'S MILL VIP DENTAL PLAN

\$199/yr

includes two cleanings, two exams, annual x-rays,
plus a 15-25% discount off treatment

- **15% Discount for Hershey's Mill Residents**
(Compare our fees to other dental offices in the area . . . You'll be surprised!)
- **Most Insurance Plans Accepted**
- **In-home Service for Dentures and Partial**
- **Fast turn-around on Dentures and Partial**
- **Digital, Low-Radiation X-Rays**



**HERSHEY'S MILL
SPECIAL PRICING**

zcom! Whitening (regularly \$750)	\$299
Crown	\$850
Custom Full Set Denture	\$1,750
Flexible Partial	\$1,050
Reline	\$185

Located in the Hershey's Mill Village Shopping Center

1381 E. Boot Road • West Chester, PA 19380

(610) 918.4995 • brilliantsmilesdentalgroup.com

Original Programming	June 1-15, 2015			
People's Light - Part 1 <i>With Mary Beth Scallan</i> Director Abigail Adams and lead actor Alda Cor-tese offer insights into the latest show, Bill Cain's <i>How To Write A New Book For The Bible</i> .	10:00 am	4:00 pm	7:00 pm	12 am
People's Light - Part 2 <i>With Mary Beth Scallan</i> This play is a witty and unsentimental look at aging parents and their caretaker children.	10:15 am	4:15 pm	7:15 pm	12:15 am
Capitol Update - Part 1 <i>With Senator Andy Dinniman</i> State Senator Dinniman discusses funding for school education in Pennsylvania, and the changes that need to be made by the legislature.	10:30 am	4:30 pm	7:30 pm	12:30 am
Capitol Update - Part 2 <i>With Senator Andy Dinniman</i> Continued discussion of funding, and talk about pipelines and how they affect Chester County.	10:45 am	4:45 pm	7:45 pm	12:45 am

Movies Noon and 8:30pm	June 1-8 Harry And The Hendersons (PG) <i>John Lithgow and Melinda Dillon</i> A family hits an animal in the woods, and thinking they have struck and killed a Bigfoot cart him home. [Run time 1h 51m]
	June 9-15 He Said She Said (PG-13) <i>Kevin Bacon and Elizabeth Perkins</i> After they split up, a newspaperman and a woman journalist each tell about their romance – but their stories could not be more different. [Run time 1h 56m]

Bulletin Board	1:00am-10:00am	11:00am-Noon	Following the movie until 4:00pm
	5:00pm-7:00pm	8:00pm-8:30pm	Following the movie until Midnight

HMC-TV Channel 20 reserves the right to make program substitutions, and all dates and times are subject to change. The expressed opinions of reporters, guests, or advertisements in this publication or in any Channel 20 telecast shall not be construed as an endorsement by HMC-TV Channel 20. ©2015 HMC-TV

Original Programming	June 16-30, 2015			
Success with Container Gardening - Part 1 <i>With Bernice Soffer</i> Unless you have a Mill garden plot, gardening is limited to decks and patios. Take notes as Bernice speaks with Robert Kaiter.	10:00 am	4:00 pm	7:00 pm	12 am
Success with Container Gardening - Part 2 <i>With Bernice Soffer</i> Robert Kaiter continues his guide to successful gardening in pots.	10:15 am	4:15 pm	7:15 pm	12:15 am
Success with Container Gardening - Part 3 <i>With Bernice Soffer</i> Robert Kaiter explores creative ways to grow plants when you have no in-ground garden.	10:30 am	4:30 pm	7:30 pm	12:30 am
Success with Container Gardening - Part 4 <i>With Bernice Soffer</i> Is your thumb green by now? Robert and Bernice conclude this four part series.	10:45 am	4:45 pm	7:45 pm	12:45 am

Movies Noon and 8:30pm	June 16-22 Places In The Heart (PG) <i>Sally Field and Lindsay Crouse</i> A Depression era Texan mother takes in a black man and a blind man as boarders when her sheriff husband is killed. [Run time 1h 51m]
	June 23-30 Quicksilver (PG) <i>Kevin Bacon and Jami Gertz</i> A hot-shot yuppie stockbroker blows his career and his family fortune on bad investments and starts over as a bicycle messenger. [Run time 1h 46m]

To view Channel 20's original programming on your computer:

Go to hersheysmill.org. Select TV & Digest, HMC-TV20, and Original Programming.

To view or print the HM cable channels:

Go to hersheysmill.org. Select TV & Digest, Cable & Comcast. Choose a basic or full channel listing.



Now Open

Toninos

PIZZA & PASTA CO.

10% DISCOUNT ON ENTREES FOR HERSHEY MILL RESIDENTS



Come enjoy our homemade pastas, pizzas, and signature Italian dishes

235 Lancaster Ave • Frazer PA • 610.240.9566 • www.toninospizzaandpasta.com

CALMON PATIENT ADVOCATE

JULIETA CALMON



PATIENT ADVOCATE
(484) 802 1055
CALMONPATIENTADVOCATE.COM
CONTACT@CALMONPATIENTADVOCATE.COM

- RETIRED PHYSICIAN
- PROVIDES INDIVIDUALIZED CARE TO MEET SPECIFIC NEEDS
- ACCOMPANIES PATIENTS TO DOCTOR'S APPOINTMENTS
- HELPS COORDINATE POST-HOSPITAL CARE
- REVIEWS MEDICATIONS
- SPEAKS ENGLISH, PORTUGUESE & MEDICAL SPANISH



OLIVER
Comfort You Can Trust

Oliver Provides Fast, Reliable, Expert Service! If It Breaks, We Fix It.

For Superior Service and Comfort You Can Trust, call Oliver today!

- Heating
- Cooling
- Plumbing
- Electrical

610-616-5691
OliverHeatCool.com

HERSHEY'S MILL PLAYERS' AUDITIONS

Janet Emanuel | Inverness

As President of the steering committee of the Hershey's Mill Players, I would like to invite you to join our fun-loving group.

The HM Players presents an original play every other June. We typically have 3 performances seen by approximately 1,000 people. You may have seen our 2014 performance of *A Day in the Life of Hershey's Mill* at East High School. I was one of the crows.

We develop the production from start to finish. Our writers are already working on the script for 2016. Members

tickets. While this may seem like a lot of work, we focus on having fun. Our parties are acknowledged to be some of the best in the Mill.

Players' Auditions For 2016 Show

Auditions will be held:
June 23 and June 30
7 pm to 9 pm
Community Center
(Dues are \$10 a year)

To sign up for an audition time, or for more information, contact our director, Carol Campanelli, at



write the script, adapt song lyrics, choreograph, build sets, do makeup, and design and sew costumes. We have singers, dancers, comedians, and a band. Other members prepare the program, handle advertising, and sell

The theme for our next show is "The Mill's Got Talent." It will be a talent show with a format like *America's Got Talent*. We are looking for singers, dancers, actors, comedians, magicians, musicians, musical groups, and those that do impressions. And we also need those important people who work behind the scenes.

I hope you will join us.

Greg Gaul | Ulster

You may have heard of exotic places to golf, but could anything be more exotic than the southernmost golf course in the world? Located 600 miles from Antarctica, Ushuaia Golf Club is in Tierra del Fuego, Patagonia. Ushuaia is pronounced “you-swhy-ya” and is at the lowest latitude of all golf clubs in the world. The average summer high temperature is 48°F; which is what it was January 12, 2015, the day I played there. I jumped off our Princess Cruise ship having gone around

way to the course, I encountered packs of roaming wild horses along the road. Known for its howling winds and no bunkers, the tiny, slick greens at Ushuaia make it quite a test at par 70. With only 140 members, this 19-years-old layout does not see many players during the course of the year. The club is closed from May 15 to October 15. During the season in December and January it doesn't get dark



Bizarro Golf Adventure

Golf At The End Of The World

Cape Horn on our way from Rio to Santiago. You may know the old seafaring tale that once you've gone around Cape Horn you're allowed to wear one gold earring and put a single leg up on the table. I may try this sometime, just maybe.

Just outside of town, this nine hole golf course is very demanding due to conditions and its rugged design. On the

until midnight, so late rounds are not uncommon. William, the club's pro, was quite cordial; and in broken English he explained that his role is as professional, greens superintendent, and club manager all rolled into one.

Ushuaia, the city, has 80,000 inhabitants and is part of Argentina at its lowest point. The signature hole is the Par five 8 hole playing off an elevated tee to a narrow strip of fairway that crosses

Golf Tip

A great drill to help improve your rhythm and tempo is the right arm drill. Grip your club using your right hand only, and without a ball take your address position. Make a nice, smooth backswing about ¾ of your normal distance. On your downswing take a small step

toward the target with your left foot and then swing the club through the hitting area to a full finish. Repeat this motion several times taking note of the needed tempo, rhythm, weight shift and release of the club head.

Matt Harvey, PGA



The object of golf is not just to win. It is to play like a gentleman, and win.
– Phil Mickelson

June Club Activities

- Thursday, June 4 Steak House Night
- Thursday, June 11 Trivia Night
- Sunday, June 21 Father's Day Family Brunch
- Saturday, June 27 Italian Night Buffet

the strong currents of the Pipo River 40 mph it was nearly impossible to reach to a rather small, elevated, two-tiered the green in three. If you can walk away green. Into a wind of about



with a bogey on this hole, you will have played it well. There is a touch of wild Scottish highlands at Ushuaia Golf Club, with an extra emphasis on the word “wild.” But I will add an extra note, that in this inhospitable land, I found it a very friendly respite awaiting my exploration.

Ad deadline is the 22nd and runs two months at no cost (due to lead time, an ad received on January 22 would start in the March edition, etc.). Limit description to 30 words per item, and include pricing and contact information. Ads are subject to review and editing. Email submission to hmctvguide@comcast.net, attention Louise O'Brien, or place printed/typed copy in the Channel 20 mailbox outside the building. You must be a HM resident to advertise.



FOR SALE Bedroom chase, mahogany carved wood with brand new upholstery. \$150. Call

FOR SALE 1993 Jaguar XJ6, 29,000 original miles, one owner, excellent condition. \$8,000. Call

FOR SALE Oak, 4 piece TV wall unit, mantle on top. Center bottom cabinet for TV is 40" x 32 1/2". Two side glass door towers are 6.3" x 24" with bottom closed storage. \$250. Call
. Photo available.

FOR SALE Pier One 36" round black wrought iron glass top table and 3 matching chairs, like new. \$300 or best offer. Call

FOR SALE 3 light teak outdoor rocking chairs with cane backs and seats. \$35 each or \$100 for all 3. Beige wicker coffee table with shelf, 20" x 36". \$15. Outdoor burnished aluminum love seat and two matching chairs with woven webbing. \$125. Five piece heavy green cast iron patio set with umbrella and stand. \$450.

Antique mahogany desk with 3 drawers and pigeon hole top, 42" x 21" x 28". \$115. Oak 4 door wall unit with shelves, 38" x 78". Matching oak bookcase, 30" x 76". Two black college rocking chairs with cushions. \$85 each. Handmade quilt rack with three rods, 27" x 9" x 34". \$35. Five drawer light maple chest, 30" x 16" x 41". \$35. Case of green mason jars. \$10. Complete Elizabethan style chess set. \$100. Round 78" hand tufted 100% wool rug. Call

FOR SALE 2010 silver Ford Fusion SE, 33,650 miles, excellent condition. \$12,000. Call

FOR SALE 2004 Volkswagen GTI 2 door, leather interior. Fantastic condition, just inspected. Great car for all ages. \$6000. Call

FOR SALE Refinished Kohler & Campbell, New York, USA Baby Grand Piano with genuine ivory keys. \$650. Call

FOR SALE White wicker twin beds, night stand, clothes tree/mirror, and waste basket. \$150. Two cherry captain chairs. \$80. Two cherry dining chairs. \$60. Cherry drop leaf dining table and 4 chairs. \$350. Striped sofa. \$175. Two gold floral wing chairs. \$100. Maroon leather recliner. \$295. Cherry twin bed. \$50. Cherry hall table and matching floral mirror. \$165. Round wooden kitchen

table with 4 matching chairs. \$150. Antique wash stand. \$95. Antique rocker. \$55. 71 piece set of Haviland Rosalinde china. \$150. 8 green glass goblets. \$15. Everything is in mint condition. Call

FOR SALE Moving and would like to sell items. Cherry wood executive desk. \$500. Leather swivel chair. \$100. Oak roll top desk. \$2,500. Any reasonable offer will be considered. Call Stephen at or

FOR SALE Crate and Barrel cream colored queen size wrought iron bed. Crate and Barrel cream colored end tables. For Donegal's end unit loft room: portable A/C, 4 years old with window attachment for venting. Williamsburg brass andirons plus log grate. Electric heater looks like black wood stove. Over-the-mantle mirror with gold frame. Chinese wall screen. Small Sony stereo CD/radio, teak. Call Sally at or

FOR SALE One pair of beautiful pinch-pleated curtains & valance, Carolina blue, 82", custom made, soft pattern, lined, rings included. \$75. Call

FOR RENT Florida is beautiful in the fall. Well-maintained condominium in Bonita Springs with lovely water views. 2 bedrooms and 2 baths. Walk to beach. Monthly rentals for October, November, and/or December. Call

FREE Stationary bike, "middle aged," in good condition. You move it. Call

FREE Metal shelves for garage or basement. Call Sally at or

Marlene is making a difference...

For Listing or Buying Real Estate call

Marlene Gulczynski, GRI, CRS, SRES, CSP
Life Gold PAR Excellence
Seniors Real Estate Specialist

Call a **NEIGHBOR**
surrounded by her successes.



RE/MAX Main Line

Office: 610-640-9300

Direct Line: 610-701-9966

E-mail: Marlene@SoldbyMarleneG.com



One call handles it all

PLUMBING | HEATING | COOLING
ELECTRICAL | WATER CONDITIONING
AUDIO/VISUAL & AUTOMATION

HALLER ENTERPRISES, INC.

ACCA
CONTRACTORS OF THE YEAR

Hallerent.com
888.625.1500

PA1867

We Specialize in Making Our Customers Happy!

CORDES CONTRACTING
40 Years of Experience & Craftsmanship

Proud 10 Year Resident!

- An Expert in Paint, Drywall & Carpentry
- No Job Too Small or Too Large
- Proud to be the Contractor of Choice at Applebrook Golf Club

Tim Cordes
610-209-7268



Griswold HOME CARE

State Licensed, Insured & Bonded
Proudly Serving Chester County for Over 30 Years

Offering Non-Medical Services Including: Personal Care, Companionship, Homemaking and More

Hourly \$17.50/hour (4 Hour Minimum)
Live-In: \$175.00/Day

Call Our Office: 610-458-7100
www.griswoldhomecare.com



LibertyWheels
Mobility for Everyone

CALL US AT — 267-765-1530
Mon-Fri 8AM—3PM or info@libertywheels.net

EV Rider—As seen on a local shopping network



CALL FOR PRICES!

Spring Is Here! Regain Your Independence! - I DID!
Our Prices May Beat Any Internet "White Glove" Delivered Scooter Price!



PRIDE GOGO Small enough to fit into most car storage areas!

We Carry Pride - Golden - EV Rider Scooters

We carry portable & larger scooters
All Major Credit Cards Accepted
Our store is in Phila. —**I live in Hershey's Mill**
We will deliver to your home fully assembled!

We can not accept insurances or Medicare!

CLUBS/GROUPS ARE LISTED IN ALPHABETICAL ORDER

APPLE MAC CONNECTION

Carol Campanelli | Ulster

Bring your iPad, iPhone, laptop, and all Mac-related questions to the Hershey's Mill Community Center (second floor) on the **4th Saturday of each month**. Bob Barton, from the Main Line Macintosh Users Group (www.mlmg.org), leads a question and answer session from **10am to noon**. Coffee, tea and light refreshments are usually available.

If you missed Bob's early April Channel 20 interview explaining the basics of using your iPad, you can view the program, as well as additional tips, by watching the program on your computer. To do so, go to www.hersheysmill.org, select TV & Digest, HMC-TV20, and Original



A few members of the Baby Boomers Book Club from the April 21st meeting at Sullivan House

Programming; choose the programming for April 1-15, 2015. There are additional Apple tips at hersheysmill.org/category/mac/.

ART GROUP

Dave Linton | Springton

We are a casual group with all levels of artistic talent who meet **Wednesdays from 12:30pm to 3pm** upstairs at the Community Center. Gather whatever art supplies you might have around and join us. To see some of our artwork, check out the gallery areas on the first level of the Community Center.

BABY BOOMERS BOOK CLUB

Mary Kay Hagerty | Heatherton

Mary Coin
by Marissa Silver

Inspired by the famous "Immigrant Mother" photo taken by Dorothea Lange in 1936, this is a reimagined story of the photographer and her subject. On **Tuesday, June 16**, we will discuss this book in the Sullivan House from 7pm to 8:30pm. At our meeting on July

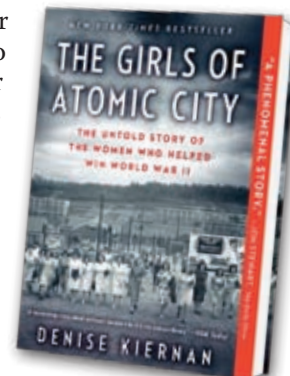
21, we will discuss *Every Fifteen Minutes* by Lisa Scottoline.

BOOK CLUB

Anne McAssey | Merrifield
Audene Paulson | Eaton

The Girls of Atomic City
by Denise Kiernan

There's much to learn in this story of the women who helped win WWII with their work on the atomic bomb in Oak Ridge Tennessee. You're welcome to join us in discussing this book on **June 11 at 2pm** at the Sullivan House.



Room of the HM Community Center. There is a specific topic discussed each month, as well as a question and answer segment. So bring your questions and we will do our best to get you answers – or suggest other resources to assist you.

CAMERA CLUB

Carol Poling | Oakmont

The Hershey's Mill Camera Club will have its first meeting on **Tuesday, June 2 at 7pm** in the Community Center's Ardmore Room. Come with your photographs, as well as thoughts and ideas for this new group. For more information call



DOMINOES

Sheila DiCroce | Devon

Join us for Mexican train dominoes and some fun with your neighbors. We meet from **1pm to 3:30pm on Wednesdays** upstairs in the Community Center. For additional information please call

CHESS CLUB

Miki Sugar | Quaker

Meetings of the club are on **Thursdays at 1:30pm** in the Sullivan House. New members, or for additional information, please call Miki Sugar at

HERSHEY'S MILL KNITTING CIRCLE

Ruth Schick | Chatham

Beginning **Thursday, June 11** and lasting through the summer, the Hershey's Mill Knitting Circle will meet at the pool. During inclement weather, we will meet in the Community Center's Paoli Room. We meet from **1pm to 3pm** and welcome knitters and crocheters whether they are beginners or experienced in their crafts. We enjoy ourselves while knitting, crocheting, and helping each other with our proj-

Continued on page 55

Quality Care by Caring Professionals

We are committed to the philosophy that Barclay Friends must be a good place to work if it is to be a good place to live.

Barclay Friends

A KENDAL AFFILIATE Together, transforming the experience of aging.

A Continuing Care Community with Post-Acute Rehabilitation



"The staff at Barclay Friends is well-known for its longevity and reputation for care."

—Brooks Adams Research

700 N. Franklin Street
West Chester, PA 19380
610-696-5211
www.bf.kendal.org



©2012 The Kendal Corporation

EEO/ADA/LEP



Accredited by The Joint Commission

CLUB NEWS (continued)

ects. For more information about the Knitting Circle, contact Bernice Soffer at

PINOCHLE CLUB

Erna Graham | Franklin

The Pinochle Club meets in the upper room of the Community Center on the **first and third Tuesday** of each month from **1pm to 3pm**. We are low key and welcome anyone who has previously played or would like to learn to play the game. We do not play for money; and we start promptly at 1pm. Pinochle is a fun game and provides healthy mental activity.



Our members are patient and enjoy interacting with new members. If you would like more details about our club, please call our chairperson, Erna Graham, at

STRESS MANAGEMENT

Anita Weeks | Kennett

We are heading into the home stretch, and my students want me to call this the **Remedies for Wellness Club**; so next year look for that club name.

We are teaching Herbs and Foods and How to Do Your Own Diagnosis and Prescription when you are confused and your doctor knows little to say about your symptoms. In that case, you are sure to have a stress disease and must treat it yourself. How many of you have drugs and do not know if they are benefiting you? When taking

ORIENTAL PEARL RESTAURANT

Sushi and Pan Asian Cuisine & **BYOB!**



SASHIMI DELUXE



MANGO CHICKEN & SHRIMP



PINEAPPLE CHICKEN & SHRIMP



OP SHRIMP & SCALLOPS

10% Off for H. Mill Residents

Goshen Village Shopping Center
1550 Paoli Pike • West Chester (Across from CVS)
610-692-5888 OrientalPearlwc.com

Stowers Handyman Service LLC

Home Maintenance & Repairs

- Carpentry
- Window Repair
- Painting
- Furniture Moving
- Drywall Repair
- Hand Rails Installed
- Tile Grouting
- Floor Repair
- Tub Caulking
- Kitchen Faucets

and lots more!

Resident handyman serving all Hershey's Mill villages

Call Dan Stowers
484-467-3361

Fully Insured
Reg. # PA 061617



10% Discount with this ad



these medicines it is up to you to decide to use them, or you can use herbs and foods instead. We meet **Thursdays from 7pm to 8:30pm** in the Billiards Room at the Community Center.

Don Trauger | Kennett

A solid-state drive (SSD) is a data storage device that uses integrated circuit assemblies as memory to permanently store data. This type of drive is also known as a solid-state disk, although it contains no actual disk nor a drive motor to spin a disk.

entered the main stream of “off-the-shelf” consumer computers.

Hybrid drives, also known as solid-state hybrid drives, combine the features of SSDs and HDDs in the same unit. These contain a large hard disk drive and an SSD cache to improve performance of frequently accessed data. However, they only boost the speed of

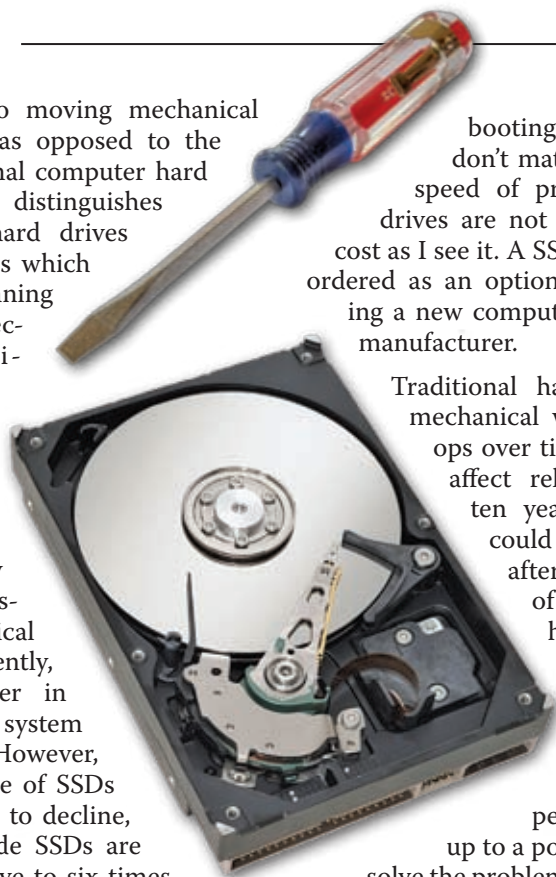
electronically in a SSD making it much faster. The remaining advantage of hard drives is basically in two categories: cost and amount of storage. However, SSDs are catching up to HDDs in the storage area.

SSDs are the same size as a laptop hard drive making them ideally suited for use as a replacement. They can also be installed in a desktop computer; but require a mounting tray that goes in the space where the hard drive is located.

new SSD, then turn on the laptop. Next, you run the Samsung Data Migration program from the supplied CD disc. This copies (clones) your hard drive to the SSD. I highly recommend that you do your routine maintenance on the hard drive *before* you run the copy program. This includes running CCleaner and Disk Cleanup; and defragmenting is also recommended. This provides a better environ-

Solid State Drives

SSDs have no moving mechanical components, as opposed to the more traditional computer hard drive. This distinguishes them from hard drives or floppy disks which contain spinning disks and electro-mechanical movable write heads. Compared with electro-mechanical disks, SSDs are typically more resistant to physical shock, run silently, and are faster in response to system commands. However, while the price of SSDs has continued to decline, consumer-grade SSDs are still roughly five to six times more expensive per unit of storage than consumer-grade hard disk drives (HDDs). This is one of the reasons why solid state drives have not



booting a computer and don't materially affect the speed of programs. Hybrid drives are not worth the extra cost as I see it. A SSD can usually be ordered as an option when purchasing a new computer direct from a manufacturer.

Traditional hard drives have mechanical wear that develops over time, and this can affect reliability. Five to ten years ago, a drive could cause problems after just a few years of use. Reliability has improved since then but wear can still be a problem. Built-in circuitry will compensate for wear up to a point, but does not solve the problem. The main issue now is that a traditional hard drive is slow in comparison to a SSD. That's due to its moving parts, and SSDs have no moving parts. All operations move



Replacing a hard drive in a laptop does not require the knowledge of a rocket scientist. It usually requires just a small screwdriver to remove a bottom panel of the laptop and the old hard drive.

Here's one way to do it. You can order the drive (and mounting kit if needed) online; I prefer either TigerDirect.com or Newegg.com. I also prefer the SSDs made by Samsung. You should order a size that is commensurate with your needs. A size of 128 or 256 Gigabytes should be adequate for most people. What you will receive is the SSD, a software disc, a special cable, and instructions. Plug one end of the cable into the laptop's USB port and the other into the

ment for the process. After the copy process is completed, shut down the laptop, unplug the cable, and remove the panel to access the hard drive in the computer. Remove the old drive, and using the mounting frame from the old drive (or a mounting kit) secure the new drive; then secure the new SSD in place. Replace the panel and turn the computer on. Next install the Magician software; this program optimizes the operation of the SSD. You can expect to see a 30% to 50% decrease in boot time over the former hard drive. Most programs will also be much quicker.

For questions about this or any PC subject, the PC Club meets on the second Tuesday of the month at 7pm in the Community Center's Ardmore room.

FATHERFEST

Classic Car & Motorcycle Show
Remote Control Drone Air Show

Sunday, June 21
11 am to 3 pm
RAIN OR SHINE

\$10 Adults
\$8 Children/Students/Seniors
Under 2 Free

Paper Plane Contest!

Photo Ops with Dusty the Plane from Disney!



AMERICAN HELICOPTER MUSEUM & EDUCATION CENTER
1220 American Boulevard • West Chester, PA
www.americanhelicopter.museum

NORTHBROOK CANOE CO.

Exclusive! Hershey's Mill Residents Only

Canoeing • Kayaking
Tubing • Canoe Lessons
Guided Canoe Trips
Groups

Open 7 Days a Week
www.northbrookcanoe.com

ANY TRIP 20% Off EVERYDAY

1810 Beagle Road Northbrook West Chester, PA 610-793-2279

One coupon per craft. Not good on food purchase or tubing. Not valid with other offers or prior purchases. Expires 9/30/15.

Directions: Take 842 West (Unionville Wawaset Road), turn right onto Northbrook Road, down hill 1 mile, Northbrook Canoe Co. on left.

RESIDENT DIRECTORY CHANGES

Bradley, Joseph & Cheryl

Myer, John

(new #)

Sprouls, Robert & Launa

Brandon, Douglas

Pastelak, Patricia

(new #)

Stalnaker, Tom & Becky

Dotts, Terrance

Reynolds, William & Rosemarie

(new #)

White, Diane

Erbstein, Maureen

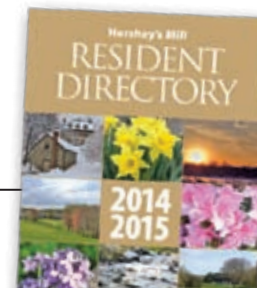
Sachs, Mark & Murray, Jeanne

(new #)

Manieri, Michael & Lidia

(new #)

Keep an eye out for the 2015-2016 edition



PIANO LESSONS

KEYBOARD/PIANO LESSONS IN YOUR HOME
LEARN TO PLAY THE SONGS THAT YOU LOVE
BEGINNERS TO ADVANCED LEVELS

CALL JAY CHADWICK
610.220.4907
MUSICZONE1@AOL.COM

Kevin Free

"the ultimate handyman"



General Home Repair

Painting/Wallpapering (including decorative) • Carpentry • Power Wash/Stain Decks
Minor Electrical • Tile Work • Masonry • and Much More

"No job is too small"

610-613-0928

Free Estimates email: dkevinfree@aol.com Senior Discounts
Conveniently located in Malvern, PA



Podiatry Care Specialists, PC




Take a Step in the Right Direction

Dr. Theodore G. Mushlin
Dr. Bradford J. Jacobs
Dr. Chad J. Friedman
Dr. Alexandra K. Grulke
Dr. Aabha M. Suchak

- Offering Professional Medical and Surgical Treatment of the Foot and Ankle.
- Ask about our Diabetic Shoe Program.
- Laser Treatment for Fungus Nails Available.

WEST CHESTER (2 LOCATIONS)

- 1593 McDaniel Drive
- 795 E. Marshall St., Suite G2 West Chester, PA 19380 610-431-0200

AUDUBON
Seton Center
950 Forge Avenue, Suite 200 (Trooper Rd. & Forge Ave.)
Audubon, PA 19403 610-431-0200

NEWTOWN SQUARE
3319 West Chester Pike at Surrey Drive
Newtown Square, PA 19073 610-356-5911

EXTON
Main Line Health Center at Exton Square
153 Exton Square Parkway
Exton, PA 19341 610-431-0200

PodiatryCareSpecialists.com



Franklin Auto Spa

Premium service to help protect the life and look of your car.

Wednesdays are **LADIES DAY!**

25% off ANY CAR WASH

**Tuesdays
SENIOR DAY!
50% off
Any Wash**

535 Lancaster Ave.

Frazer, PA 19355

Phone: (610) 296-9000

Washes:

-  **Lightning Strike - \$24 (incl. tax)**
Take Flight Wash + - Durashield® U.V. Protectant
- 72 Hour Guarantee - Lava Wax Polish
-  **Take Flight - \$20 (incl. tax)**
Turn Key Wash + - Tire Shine
- Triple Spot Free Rinse - Colorcoat® Triple Foam
- Durashield® U.V. Protectant
-  **Turn Key - \$17 (incl. tax)**
Ben's Basic Wash + - Guard Dog® Undercarriage
- 2 Step Wheel Cleaning
-  **Ben's Basic - \$14 (incl. tax)**
Exterior Wash + - Interior Vacuuming
- Dash Wiped Clean - Windows Cleaned
- 1 Step Wheel Cleaning
-  **Exterior Wash - \$9 (incl. Tax)**
- Exterior Wash - Towel Dry



www.franklinautospa.com

Mold removal • Sump pumps installed
Emergency clean up • Foundation crack repairs

LEAKY BASEMENT?

Don't Get Soaked!

FOREVER DRY

Basement & Waterproofing

610-304-1342

PA055156

R. David Warner • foreverdry@att.net

HM LIBRARY NEWS

Donna Spoto | Ulster

Our preparation for the annual Used Book Sale, to be held in September, is in full swing. Make a note to join us on Saturday, September 12 and Sunday, September 13 at the Community Center.

We are accepting donations of books at this time; as well as complete puzzles, music CDs, and DVDs. Please leave your donations at the library. All donated books should be in excellent condition. Hardback and tradebooks will sell for \$1. Paperbacks, puzzles, and CDs will be 50 cents.

Become a Friend of the Library for a yearly contribution of \$5 or more. Contributions can be made at the library. Friends are able to attend our preview reception on Friday, September 11 from 4pm to 6pm in the Community Center.

Thank you for your continued support, and we hope to see you at the library.

NEW LIBRARY BOOKS

Peggy McReynolds | Yardley Librarian

Alphabetical by Author

Begley, Louis – *Killer, Come Hither*

Berg, Elizabeth – *Dream Lover*

Berry, Steve – *Patriot Threat*

Bostwick, Marie – *Second Sister*

Boyle, T.C. – *Harder They Come*

Bradford, Barbara Taylor – *Cavendon Women*

Coben, Harlan – *Stranger*

Genova, Lisa – *Inside the O'Briens*

Gruen, Sara – *At the Water's Edge*

Kurkjian, Stephen – *Master Thieves*

Leon, Donna – *Falling In Love*

Community Center Library Hours
Monday to Friday 10 a.m. – 2 p.m.
Saturday 10 a.m. – Noon

www.hmlibrary.com

Macdonald, Helen – *H is for Hawk*
 Macomber, Debbie – *Last One Home*
 Mallery, Susan – *Girls of Mischief Bay*
 Nemirousky, Irene – *Fires of Autumn*
 Nesbo, Jo – *Blood on Snow*
 Ohanesian, Aline – *Orhan's Inheritance*
 Packer, Ann – *Children's Crusade*
 Patterson, James – *Miracle at Augusta*
 Patterson, James – *NYPD Red 3*
 Peyser, Marc – *Hissing Cousins*
 Roberts, Nora – *Liar*
 Santos, de los, Marisa – *Precious One*
 Scottoline, Lisa – *Every Fifteen Minutes*
 Standiford, Les – *Water to the Angels*
 Weiss, Michael – *ISIS*
 White, Randy Wayne – *Cuba Straits*
 Winspear, Jacqueline – *Dangerous Place*
 Woods, Stuart – *Hot Pursuit*

Few pleasures, for the true reader, rival the pleasure of browsing unhurriedly among books ... it does not matter whose or where. Simply to be among books, glancing at one here, reading a page from one over there ... is a deep satisfaction. And often, very often, while browsing haphazardly, looking for nothing in particular, you pick up a volume that suddenly excites you, and you know that this one of all the others you must read. Those are great moments – and the books we come across like that are often the most memorable. ~ Aidan Chambers

Summer is nearly here and the fun is just beginning. When you want a refreshing treat for the patio, pool, or party that everyone can enjoy, these non-alcoholic “mocktails” will fit the bill. All the recipes are for one drink, but we suggest you multiply the quantities by the number of friends to equal a good time for all.

Raspberry Rascal

The raspberry syrup stores well in the refrigerator, along with a carton of pasteurized egg whites, so that this burst of summer flavors is just a shake away.

- 2 ounces raspberry syrup (see below)
- 2 ounces fresh lemon juice
- 1 ounce rose water
- 1 egg white (pasteurized)
- Ice (cubes)
- Raspberries for garnish



Raspberry syrup: Combine a ½ pint of raspberries, ½ cup water, and ¾ cup powdered sugar in a sauce pan and cook over low heat for 10 minutes. Crush berries and cook another five minutes. Remove from heat and let sit at least 30 minutes. Strain the syrup into a jar and refrigerate until needed.

Combine syrup, lemon juice, rose water, and egg white in a cocktail shaker and shake well. Add ice and shake again until cocktail shaker is very frosty. Strain into a chilled glass and garnish with skewered raspberries.

Redheaded Sweetheart

Even the most devoted of husbands can be forgiven for stepping out with this refreshing lady.

- 1 ounce simple syrup (see below)
- 4 mint leaves
- 3 ounces pomegranate juice
- ¾ ounce fresh lime juice
- 1 ounce cranberry juice
- Ice (cubes and crushed)
- Mint sprig for garnish

Simple syrup: Combine 1 cup water and 1 cup sugar in a saucepan and boil over moderately high heat, stirring occasionally, until sugar is dissolved. Store in a jar in the refrigerator.

In a cocktail shaker, muddle the mint leaves with the simple syrup. Add all juices and ice cubes and shake until cocktail shaker is very cold. Strain into a glass filled part way with crushed ice, and garnish with the mint sprig.

Mother’s Milk

A creamy concoction that tastes like a warm hug, but refreshes on even the hottest summer days.

- Ice (cubes)
- 3 ounces chai tea (brewed, sweetened and thoroughly chilled)
- 1 ounce whole milk
- 1 ounce half-and-half
- 1 ½ teaspoons maple syrup
- ½ teaspoon vanilla extract
- 1 egg white (pasteurized)
- Pinch of freshly grated nutmeg, plus more for garnish

Fill a cocktail shaker with ice, then add all ingredients and shake aggressively until cocktail shaker is frosty. Strain into a chilled glass and garnish with a dusting of nutmeg.

Cherry Pucker

This treat will make you pucker just a bit, but delivers a big kiss of cherry flavor.

- 1 ½ ounces sour cherry puree (below)
- 1 ½ ounces fresh lemon juice
- 1 egg white (pasteurized)
- 1 ½ ounces cherry soda
- Ice (cubes)
- Maraschino cherries for garnish

Sour cherry puree: In a blender, puree a jar of sour cherry preserves with just enough water to make a very smooth mixture (about 2 ounces for a 12 ounce jar). Strain into a jar and refrigerate.



Combine puree, juice and egg white in a cocktail shaker and shake well. Add ice and shake again until cocktail shaker is very cold. Strain into an ice filled glass, then mix in the cherry soda. Garnish with skewered cherries.

VOTED #1 FLOORING STORE BY MAIN LINE & DAILY LOCAL READERS



Where PERSONAL SERVICE Makes the DIFFERENCE

705 E. Gay Street ■ West Chester
www.BoylesFlooring.com ■ 610-429-9773



We Are NOT Happy, Unless YOU Are!



610-431-3338
Fully Certified & Insured LLC with 30 Years of Experience

Count on Us to Provide Low Prices, Rapid Response & Service on All Major Brand Appliances

- Refrigerators
- Dishwashers
- Microwaves
- Ranges
- Ovens
- Washing Machines
- Dryers
- Freezers

Call Today For A 5% Discount For Hershey's Mill!



Complete Landscaping Packages

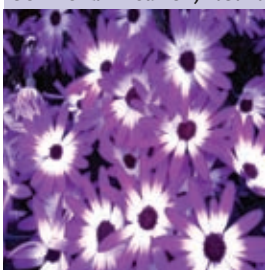
- ✔ Professional Consultation
- ✔ Scale Drawings & Design
- ✔ Complete Necessary Forms
- ✔ Installation & Warranty

610-692-2649

hmland@comcast.net



Michael C. Neale, P.C.H.
Connie L. Friedrich, P.C.H.



PREMIER DENTISTRY

\$199 Annual Plan

FOR HERSHEY'S MILL: X-RAYS,
TWO CLEANINGS, TWO EXAMS,
TWO ORAL CANCER SCREENINGS,
PLUS 20% OFF ANY DENTAL WORK

FREE
NEW
PATIENT
DENTAL EXAM

Porcelain Crowns in one visit: 20% OFF

Goshen Village Shopping Center,
next to Oriental Pearl and Athena Pizza
1544 Paoli Pike, West Chester, PA 19380

610-696-7066

www.MeyersonDental.com



ACTIVITIES CONTACTS

Alzheimer's/Dementia Support Group.....	Barbara Mulvey.....
Art Group.....	Dave Linton.....
Baby Boomers.....	Christy Herschel.....
Bible Study (Women's).....	Marian Malloy.....
Bingo.....	Ollie Price.....
Book Discussion Group.....	Anne McAssey.....
Bowling.....	Franne Lytle.....
Bridge Groups:	
WH Duplicate, Mon. 12:30pm.....	Joey Livesey.....
WH Duplicate Bridge, Mon. 7pm.....	Lee Gamma.....
Golf Club Tuesday Bridgers, Members Only.....	J.B. Smink.....
Social Club Party Bridge, Members Only.....	Susan Hackstaff.....
Golf Club Friday Bridge, Members Only.....	John Marks.....
Bus Trips.....	Marc Fraser.....
Card Games.....	Penny Adolf.....
CareSharers.....	(Answering Service)..... 610-430-8830
Chess Club.....	Miki Sugar.....
Chester County Hospital Auxiliary.....	Constance Campbell.....
Community Center Reservations.....	(Answering Service)..... 610-436-6019
Computer Club (Apple Macintosh).....	Carol Campanelli.....
Computer Club (PC).....	Don Trauger.....
Cradle Stitchers.....	Donna Faunce.....
English Darts.....	Sam Arcana.....
Exercise Groups:	
Aerobic Dance/Exercise.....	Barbara Thomas.....
Ageless Exercise.....	Gayle Ulrich.....
Tai Chi.....	Mitch Goldfarb.....
Yoga.....	Ellie Sybesma.....
Friends of Sullivan House (FOSH).....	Ann Gunn.....
Garden Club.....	Jim DiCarlo.....
Golf Club.....	Scott Martin.....
Havurah (Friends Group).....	Tillie Markowitz.....
Knitting Circle.....	Bernice Soffer.....
Library Board.....	Becky Bell.....
Mah Jongg.....	Erna Graham.....
Model Railroaders.....	Dave Voorhees.....
Paoli Hospital Auxiliary.....	Patty Murphy.....
Pinochle Club.....	Erna Graham.....
Players.....	Franne Lytle.....
Poker Club.....	Mike Brindisi.....
Pool.....	Carol Campanelli.....
Quilters.....	Diane King.....
Rummikub.....	Maryann Tracey.....
Singers.....	Bonalynd Mosteller.....
Social Club.....	Lee Gamma.....
Sports Group.....	Helen Greco.....
Stress Management.....	Anita Weeks.....
Sullivan House Reservations.....	(Answering Service)..... 610-696-0541
TV Channel 20.....	Don Trauger.....
Wood Shop.....	Ben Ellis.....

Additional contacts available in the annual *HM Resident Directory*

ADVERTISERS' INDEX

Adult Care of Chester County, Inc.	40	Kevin Free	58
American Helicopter Museum & Education Center	58	Knots & Weaves	40
Angel Companions	22	Liberty Wheels.....	51
A to Z Appliance Repair	63	MacLaren Fabrication	28
Barclay Friends	54	Made Easy Inc.....	36
Bayada Home Health Care	14	Northbrook Canoe Co.	58
Blinds 4 U.....	36	O'Brien Heating & Air Conditioning	40
Boyles Flooring.....	62	Oliver	44
Brewer Heating & Air Conditioning	14	Oriental Pearl Restaurant	54
Brooklands Audiology, Inc.....	67	Paoli Hospital.....	37
Buckley, Brion, McGuire & Morris LLP	28	Paoli Rug Co.....	15
Calmon Patient Advocate.....	44	Piano Lessons.....	58
Chester County Orthopaedic Associates.....	6	Pine & Pine Law Offices.....	20
Cordes Contracting	50	Podiatry, Ronald Melincoff, DPM...22	
Deck Protect Plus LLC.....	13	Podiatry Care Specialists	59
Donnelly Heating & Air Conditioning Inc.	28	Premier Dentistry.....	64
E.W. Brown, Inc.	14	RE/MAX Main Line	48
Forever Dry.....	60	Richard J. Egan Painting Co.	14
Franklin Auto Spa	60	Riddle Village	32
Freedom Village Brandywine.....	29	Ruggeri Cadillac	4
Friends of Sullivan House.....	8	Safe Bath	15
General Warren.....	36	Seniors Helping Seniors.....	7
Griswold Home Care.....	50	ShelfGenie.....	12
Haller Enterprises, Inc.	50	Signature HVAC.....	24
Hershey's Mill Landscape.....	64	Smile Solutions	41
Hershey's Mill Realty.....	3	Stowers Handyman Service LLC	55
John S. Price, Jeweler, Inc.	28	Surrey Services for Seniors	21
		Survival Essentials.....	23
		The Bacon Press.....	33
		Toninos Pizza & Pasta Co.....	44
		Wagner Inc. Real Estate	68
		Wellington at Hershey's Mill	2

HMC-TV thanks our advertisers for their support.

When you contact one of our advertisers, make sure to mention that you saw them in the *Guide and Digest!*

I Listen...

so you can hear better!

**Patricia A. Cohen MA CCC
Licensed Audiologist**



Brooklands Audiology inc.

Meeting Your Hearing & Budget Needs

Over 25 years experience

Serving Hershey's Mill for over 12 years

Complete Hearing Care

State of the Art, Rechargeable, Virtually Invisible

Digital Hearing Aids

Testing Repairs & Service

Amplified Telephone & TV Devices

Hershey's Mill Courtesies

20% off already discounted Hearing Aid Prices

0% Financing Easy Payment Plans 60 Day Trial Period

Free Monthly Hearing Screenings at the Community Center

I represent you to the Major Manufacturers

Please Call 610-408-9250 for appointment

301 Lindenwood Dr. Malvern - Off Rt 30 2 Lights North on Rt 29

Across from Wegmans



Pat Meehan
610-574-2465
Eaton Village

John Clarke
610-547-3861
Eaton Village

Lynne Carter
610-291-1282
Kennett Village

Trust the team that lives here to sell your home.

We sell homes exclusively in Hershey's Mill – so we have a unique understanding of the real estate market here. Using our knowledge and expertise, we will market your home to get you the best price possible.

We've sold hundreds of homes throughout the Mill and we are ready to sell yours. After all, we *live the lifestyle we sell.*

Selling • Buying • Estates

*Serving clients exclusively within Hershey's Mill
Free Notary services to our Hershey's Mill neighbors*

www.HersheysMillTeam.com



WAGNER INC.
REAL ESTATE
4 Generations Since 1930

610-446-2300